

THE MOUNTAINEER

VOLUME XXII

Number 1

December 15, 1929

Canadian Rockies



Special Ski Number

PUBLISHED BY
THE MOUNTAINEERS
INCORPORATED
SEATTLE WASHINGTON.

COPYRIGHT, 1929
The Mountaineers
Incorporated

The MOUNTAINEER

VOLUME TWENTY-TWO
Number One

December 15, 1929

Canadian Rockies



Incorporated 1913
Organized 1906

Special Ski Number

Subscription Price, \$2.00 Per Year.
Annual (only) Seventy-five Cents.

Published by
THE MOUNTAINEERS
Incorporated
Seattle, Washington

Entered as second-class matter, December 15, 1920, at the Postoffice
at Seattle, Washington, under the Act of March 3, 1879.

EDITORIAL BOARD, 1929

Winona Bailey	Lulie Nettleton
Edith Page Bennett	Agnes E. Quigley
Mildred Granger	C. F. Todd
Mrs. Joseph T. Hazard	Mrs. Stuart P. Walsh

Assisted by

SKI COMMITTEE

Andrew W. Anderson	W. J. Maxwell
T. Dexter Everts	Paul Shorrock
Hans-Otto Giese	Otto P. Strizek
Norval W. Grigg	Mrs. Stuart P. Walsh, Secretary

Robert H. Hayes, Chairman

I am delighted to learn that The Mountaineers of Seattle, Washington, have again enjoyed a summer outing in the Canadian Rockies. It is a source of sincere gratification to Canadians that the splendours of their mountain heritage are attracting an increasing number of visitors from other countries. May I express the hope that your successful expedition of this summer may be repeated with equal pleasure in future years. Your love of our mountain ranges carries its own assurance of a hearty welcome to Canada.

Yours sincerely,

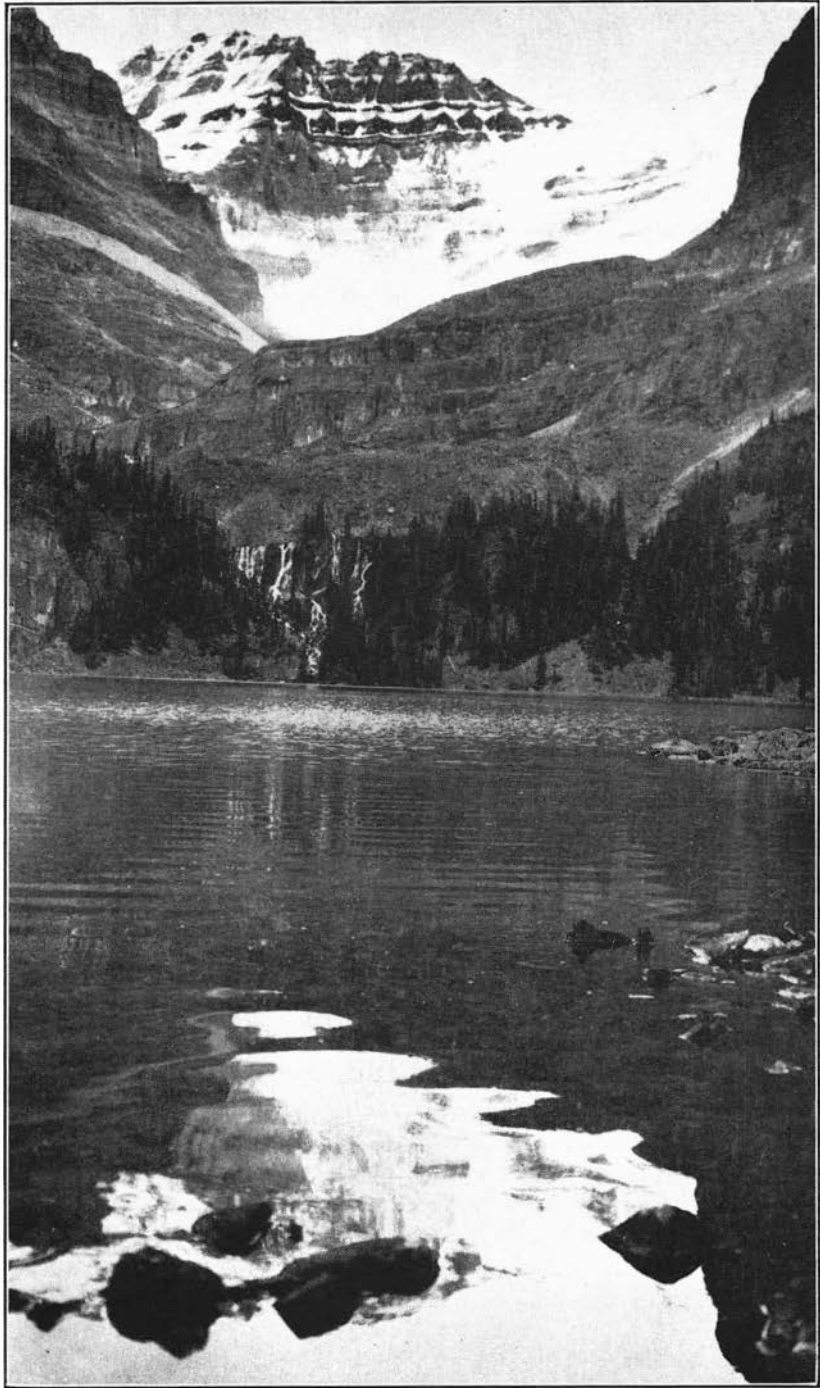
W. M. Mochungie King.

CONTENTS

	PAGE
Greetings.....	<i>W. L. Mackenzie King</i> 3
The Harp of O'Hara (a poem).....	<i>Edmond S. Meany</i> 7
The Mountaineer Outing of 1929.....	<i>Catherine Crayton</i> 9
Members of the Summer Outing, 1929.....	18
Northern Life Tower.....	<i>A. H. Albertson</i> 20
Skiing in Switzerland.....	<i>Irving M. Clark</i> 28
The Development of Skiing in The Mountaineers.....	<i>Robert H. Hayes</i> 33
History of Skis and Ski-Running.....	<i>K. Vilhelm Amundsen</i>
A translation by A. W. Anderson.....	37
Ski-Jumping	<i>Hans-Otto Giese</i> 40
Trophies	<i>T. Dexter Everts</i> 44
Dress, Equipment and Waxes.....	<i>N. W. Grieg</i> 49
Skis Triumphant (a story).....	<i>W. J. Maxwell</i> 57
Department of the Interior (a citation for heroism).....	63
Summer Outing, 1930	64
Book Review	64
Regular Monthly Meetings.....	65
Summary of Seattle Local Walks.....	65
Record of Trophies	65
Financial Reports	66
The Mountaineers, Officers, Committees and Members.....	71

ILLUSTRATIONS

	PAGE:
Lake O'Hara.....	<i>Mabel Furry</i> 6
Seven Sisters	<i>Winona Bailey</i> 7
Sinclair Canyon	<i>Mabel Furry</i> 8
Climbing Wiwaxy.....	<i>Mabel Furry</i> 11
Lake McArthur	<i>A. H. Hudson</i> 13
Mount Odaray	<i>Mabel Furry</i> 14
On Mount Victoria.....	<i>A. H. Hudson</i> 15
The Dutch Hoodoos.....	<i>Doris Sundling</i> 17
Abbott Pass	<i>Mabel Furry</i> 19
Northern Life Tower.....	20
Top of Northern Life Tower.....	22
Mount Huber	<i>Mabel Furry</i> 23
Buttresses on Northern Life Tower.....	25
Rock Buttresses, Chocolate Glacier Canyon.....	25
Tower of Babel.....	26
Main Lobby, Northern Life Tower.....	27
Crevasse Near Jungfrauoch	31
Concordia Hut and Platz	33
Sliding on the Level.....	<i>Courtesy of Gebr. Enoch Verlag</i> 35
Kick-Turning	<i>Courtesy of Gebr. Enoch Verlag</i> 37
Skiing Up-Hill.....	<i>Courtesy of Gebr. Enoch Verlag</i> 39
A Perfect Ski-Jump.....	<i>Courtesy of H. O. Giese</i> 40
Nels Nelson Jumping 235 Feet.....	<i>Courtesy of H. O. Giese</i> 41
Side-Stepping.....	<i>Courtesy of Gebr. Enoch Verlag</i> 43
Trophy Winners.....	<i>A. H. Hudson and Courtesy of The Seattle Times</i> 45
Skating Downhill	<i>Courtesy of Gebr. Enoch Verlag</i> 47
A Telemark	<i>N. W. Grigg</i> 48
Skating	<i>Courtesy of Gebr. Enoch Verlag</i> 49
Stemming	<i>Courtesy of Gebr. Enoch Verlag</i> 51
A Christiania.....	<i>Courtesy of Gebr. Enoch Verlag</i> 53
Near Meany Ski Hut.....	<i>A. H. Hudson</i> 54
Meany Ski Hut	<i>A. H. Hudson</i> 55
Snoqualmie Lodge at Night.....	<i>R. E. Ellis</i> 57
A Jump-Turn.....	<i>Courtesy of Gebr. Enoch Verlag</i> 60
A Gelaende-Sprung.....	<i>Courtesy of Gebr. Enoch Verlag</i> 61



LAKE O'HARA

Mabel Furry

Showing Mount Lefroy and the Seven Sisters, a series of springs gushing from the middle of a ledge at the head of the lake.

The Mountaineer

VOL. XXII. NO. 1.

SEATTLE, WASHINGTON

December, 1929



SEVEN SISTERS

Winona Bailey

THE HARP OF O'HARA

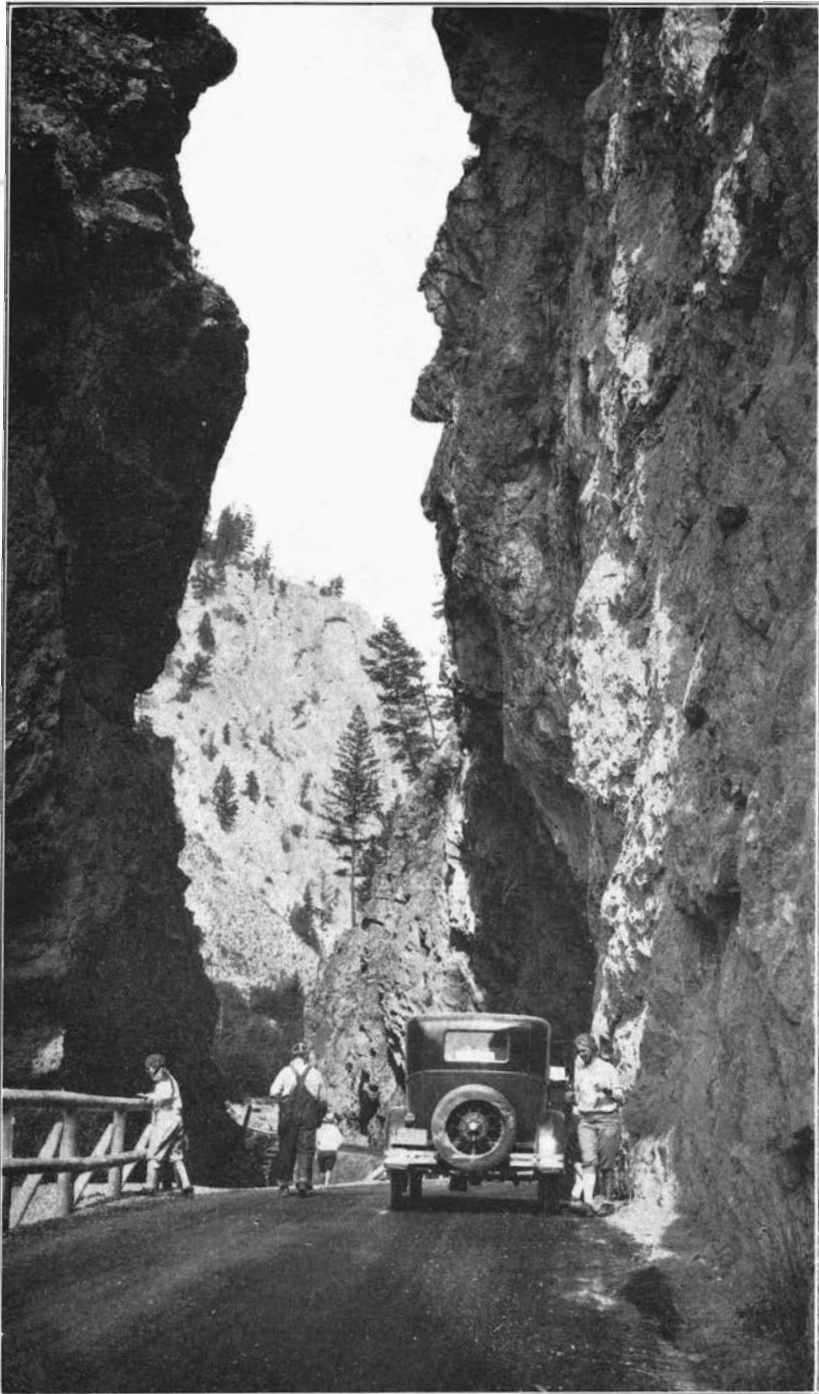
*Oh, when shall I hear thy sweet music again,
Wild harp in the lap of these uplifted hills!
Oh, how shall thy chorus, thy rhythmic refrain,
Find echoes in cities, mysterious thrills!*

*Sisters Seven,
Glimpse of Heaven,
From mountain climbers' home:
Mystic singing
Closer bringing
Yon stars of vaulted dome.*

*Staunch Huber and gallant Lefroy here acclaim
Majestic Victoria in regal array,
While Yukness and Schaffer, as heralds of fame,
Wave forward a princess, thy fair Odaray.*

*Sacred chorus
Swaying o'er us,
More real than ancient Tara:
Lofty towers,
Tender flowers
Clasp thee, loved Harp O'Hara:*

Edmond A. Meany



SINCLAIR CANYON

Mabel Furry

Also known as Parson's Gap, nature's entrance to Kootenay National Park, near the western gateway.

THE MOUNTAINEER OUTING OF 1929
A GYPSY TOUR

CATHERINE CRAYTON



LINE of newly washed, highly polished, trimly turned-out cars in makes varying from the newest edition of sedans to the last word in roadsters made up the wheeled personnel of the Gypsy Caravan which left Seattle Sunday morning, July 28, for a three weeks' jaunt in the Canadian Rockies. Views of this super-civilized procession, as shown by the various moving picture films "shot" on that radiant summer morning, reveal nothing of the bundles of stout alpenstocks, bushels of fiercely calked boots, nor the piles of pack-boards appertaining to the occupants of the aforementioned elegant vehicles. For these remained stored away for the first week under a mountain of dunnage bags, riding securely in the big truck detailed for such service and companioned by a similar truck filled with the even more important commissary equipment. Each one of the fourteen cars was neatly ticketed fore and aft with a white and green sticker, labeled "Mountaineers."

Traveling eastward through Snoqualmie Pass, the party stopped for lunch at the summit, where its members were at last revealed in their true colors, or clothes. No longer were they luxurious tourists, but knicker-clad mountaineers with bandanas flapping and tin cups clattering as they gathered for refreshment. For was there not to be a glorious week of climbing, once this preliminary journey was ended?

The first camp was made near Ellensburg, beside the clear, cool waters of Yakima river. Next morning, establishing a precedent to be followed fairly regularly on the journey, the party rose at 5 and the last car left camp at 7 a. m. The most scenic part of the second day's journey was where the highway crosses the Columbia at Vantage Ferry and winds its course up the eastern escarpment of the valley. About twenty miles north of Spokane beautiful Lake Eloika furnished a welcome and comfortable camp site for the second night.

Next morning up and on toward the international boundary. At midday Eastport came into view, with Kingsgate over the line, a Mecca which seemed discouragingly distant in view of the cars ahead. But the officials were fairly expeditious and, with but slight delay, all cars passed across the line and entered on Canadian soil.

At Kingsgate our attention was attracted by the boundary itself. a strip cut through the heavy timber and extending up over the hill and eastward. At the next campfire President Meany gave a vivid account of stirring times back in the first half of the nineteenth century when disputes over our northern boundary were finally brought to a close by

a treaty, in 1846, extending the line, already established farther east, along the forty-ninth parallel, from the Rockies to the Pacific. This now has markers at intervals throughout its length, and wherever there is forest, as near Kingsgate, a broad swath has been cut through the trees.

The first camp in British Columbia was, by permission, on the property of a rancher who, with true Canadian hospitality, allowed the use of a secluded spot beside a tumbling brook, not far from Lake Moyie.

Next day the caravan wound along the clear, green Kootenay river, crossed it several times, and finally came to rest and lunch at the head waters of the Columbia river, a stone's throw from the Kootenay. Here are the old locks constructed years ago to connect the two rivers for purposes of navigation. One boat was taken through, we were told, then the scheme was abolished, to the enrichment of the promoters and the reverse for the backers.

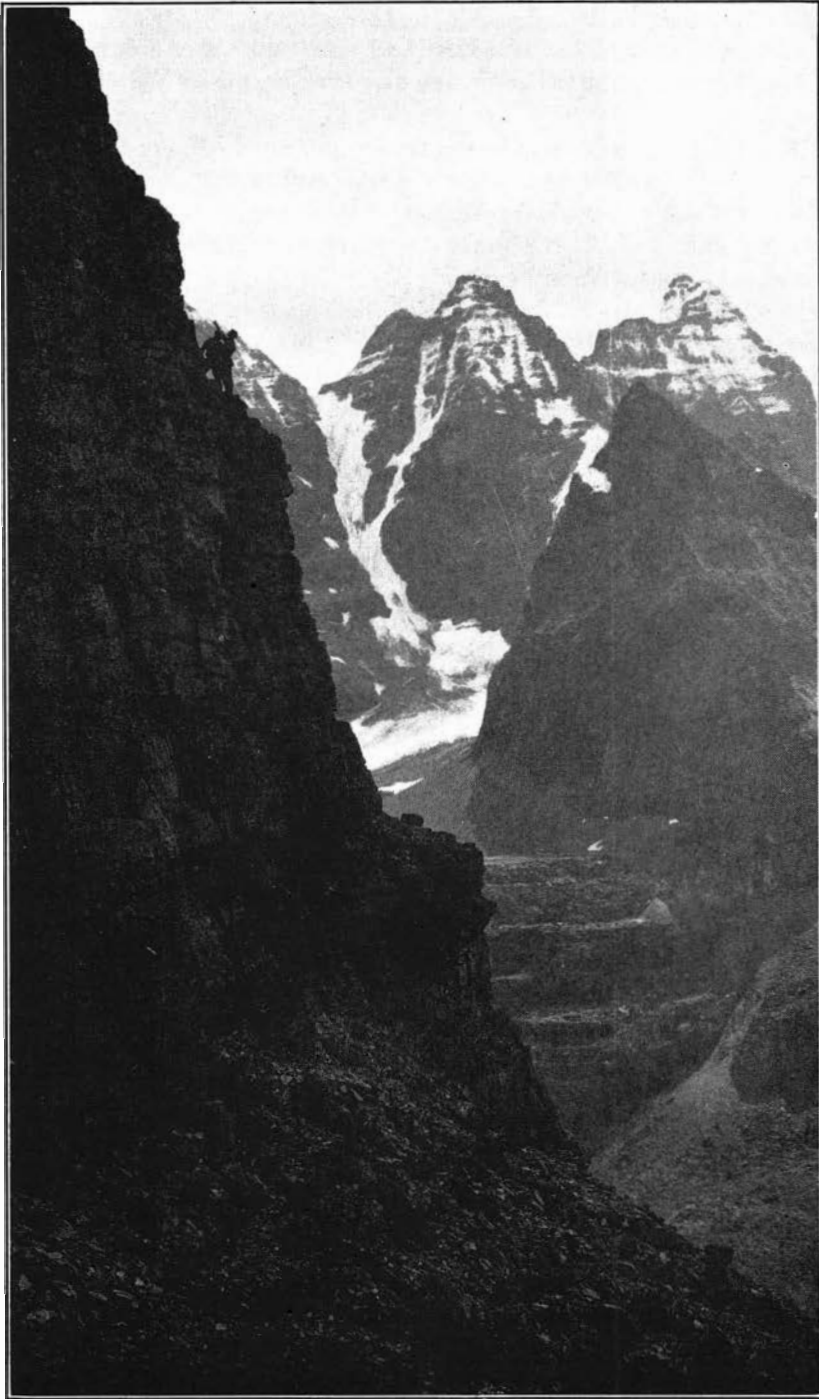
Following Columbia lake, then Windermere, we arrived in early afternoon at the entrance to Kootenay Park, beneath which glimmered the clear water of the Radium Hot Springs open-air swimming pool, a deservedly popular resort. The Mountaineers made full use of it, as they did of every other available pool, lake, or river along the entire route.

After camping for one night half a mile from the entrance, we set out early next morning for Johnston Canyon. The roads were excellent and well oiled. Such windings in and out, such madly roaring torrents below, with occasional spectacular cataracts and alluring glimpses of ever-nearing peaks, till jagged glaciers began to show and dizzy pinnacles hung above us. One fortunate turn gave a distant view of Mount Assiniboine itself, that icy aristocrat of northern mountains. Then, too, there was Marble Canyon, that miniature gem of canyons, its gorge so narrow that in places the sides seem to overlap and the creek below is actually lost to view.

During the morning we crossed the Continental Divide and passed from Kootenay Park into the Bow Valley in Rocky Mountains Park. Camp was made on a broad flat, beside Johnston Creek, a bold, dashing stream some half mile below Johnston Canyon itself. There were distant views of many peaks, with "close-ups" of the graceful snow-tipped Pilot and the impregnable bulwarks of Castle. Opportunity to visit Banff, twenty miles away, furnished diversion for the afternoon.

That day and the next we began to make the acquaintance of the fauna of the parks. Bears, though somewhat shy, did not disdain to visit our camps, while fortunate members of the party sighted deer, goats, moose and caribou.

One of the most scenic experiences of the entire trip was the drive to Lake Louise, the three-mile climb by trail to Lake Agnes, and in the afternoon a continuation of the drive to the Valley of the Ten



CLIMBING WIWAXY

Mabel Furry

On the upper cliffs of one of Wiwaxy's peaks. Mounts Ringrose and Hungabee in the distance.

Peaks. The view of Moraine Lake and the peaks above it is too beautiful for any but an artist to depict, and even he must wield an inspired brush.

Early Friday morning the entire caravan sped off for Hector, just west of the Great Divide. Here thirteen newcomers arrived by train. These, with three who had completed the Canadian Alpine Club outing and had gone to Lake O'Hara a day early, brought the number of the entire party up to seventy-one.

For the first time now alpenstocks, stacked like a cord of wood on the trail side, were sought out and claimed, while pack-boards were selected from another pile. Suddenly from around a bend in the road our pack train, tied nose to tail in approved fashion, swung briskly into view, spurred on by a youthful cowboy astride the leading pony and picturesque in a ten-gallon hat. A cheer went up at the sight, and with implicit faith in those ponies and that boy, we set out southward and upward on the eight-mile walk to Lake O'Hara. There was general rejoicing that the days of inactivity were over, and many an expression of satisfaction was heard. "This," everyone said, "begins to seem like a true Mountaineer outing."

And that spirit remained, even after camp was reached in late afternoon and thunder began to rumble. Later the storm broke, with huge, cruel, pelting hailstones. Less than half the dunnage was in. Those whose tents had arrived erected them in desperate haste, scooping hailstones off the ground as they worked. Thick, mossy beds that had been promptly constructed as each person had arrived and selected his particular camp-site, were speedily buried under an almost equally thick, white carpet. Only the fact that it was frozen made it removable and left the spot habitable for the night. The weather cleared at noon next day, and with the exception of one brief early morning shower the sun always warmed by day, even though the frost nipped by night.

And what a camp we had for eight whole days! Thanks to the friendly hospitality of the Canadian Alpine Club, we had the privilege of an ideal site with tables and benches all set up, foot logs laid, trails worn, and conveniently erected poles from which, against a background of mountains and lake, the Canadian flag and Old Glory waved over us throughout our stay.

The lake itself, at an altitude of 6,500 feet, was an ever-changing green or turquoise, according to one's angle of vision; looked at from a rowboat, the water was clear indigo. Along its southern shore our white or brown tents were scattered among the dark firs. All around were mountains. Toward the east were the glaciers of Victoria and Lefroy. In the same direction a broad waterfall, draining from a series of small glacial lakes, sprayed the face of a huge rock ledge just beyond our canvas village. Almost in front of us towered the oddly terraced Huber like a crown topping some giant head. Toward the north and

west were Wiwaxy and Odaray, with Cathedral between them lifting its sublime spire heavenward, the first to catch the golden glow of dawn, the last to lose the blush from the setting sun. It is hard to say just when the lake was loveliest. But to some of us, at least, it was most alluring between the purple dusk and darkness, when the intervening slopes were blotted out and the black mountain masses gave a queer impression of crowding up to the very edge of the still luminous lake.

As a base camp, it offered much variety in side trips. For a week the strenuous climbers scaled the high peaks. Some, equally sturdy,



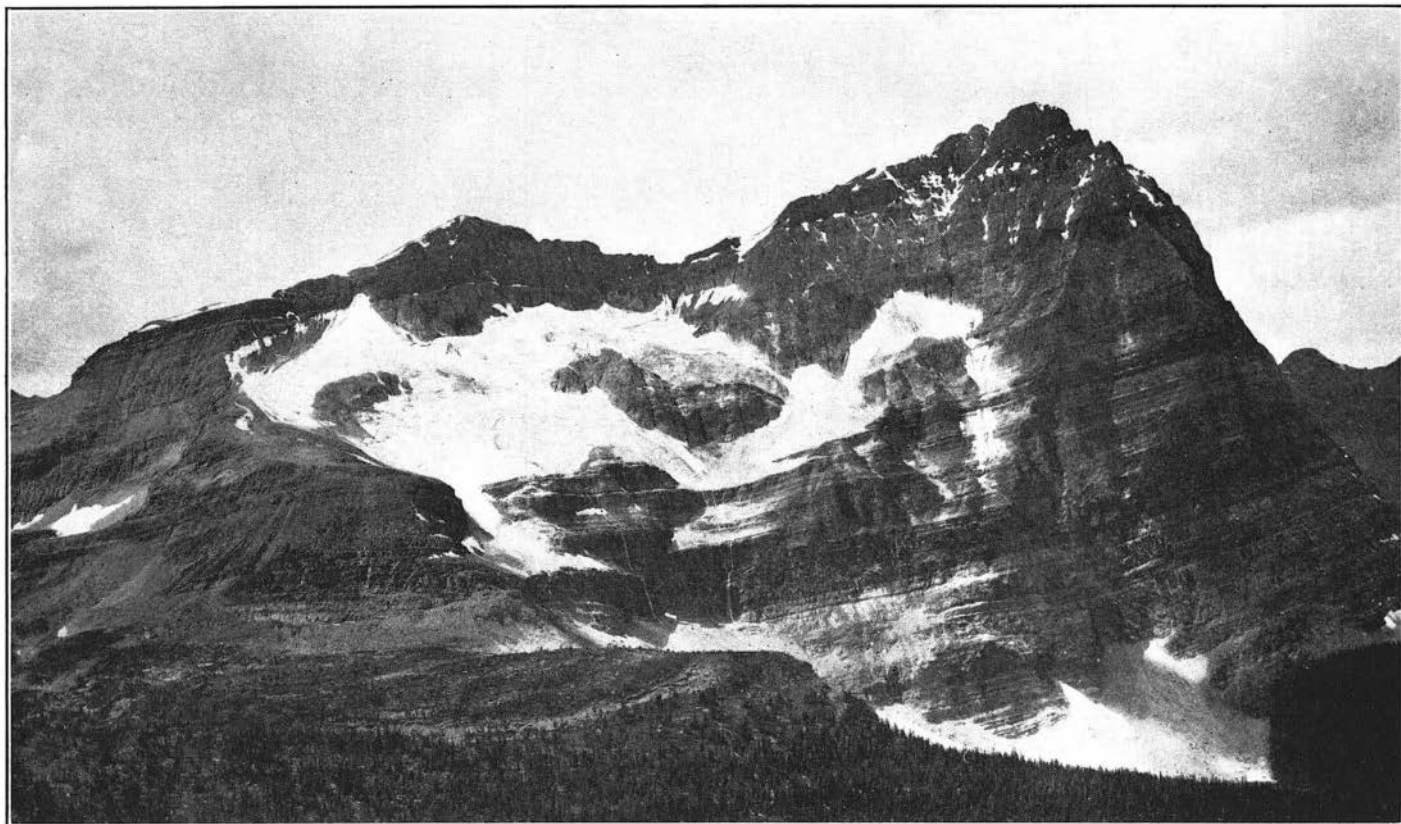
LAKE McARTHUR

A. H. Hudson

made the round of the passes, including Abbott, Wastach, Mitre, Wenkchemna and Opabin. Others, slightly less ambitious, crossed three of them; while a few took single-day trips to the nearest ones, Abbott and Opabin.

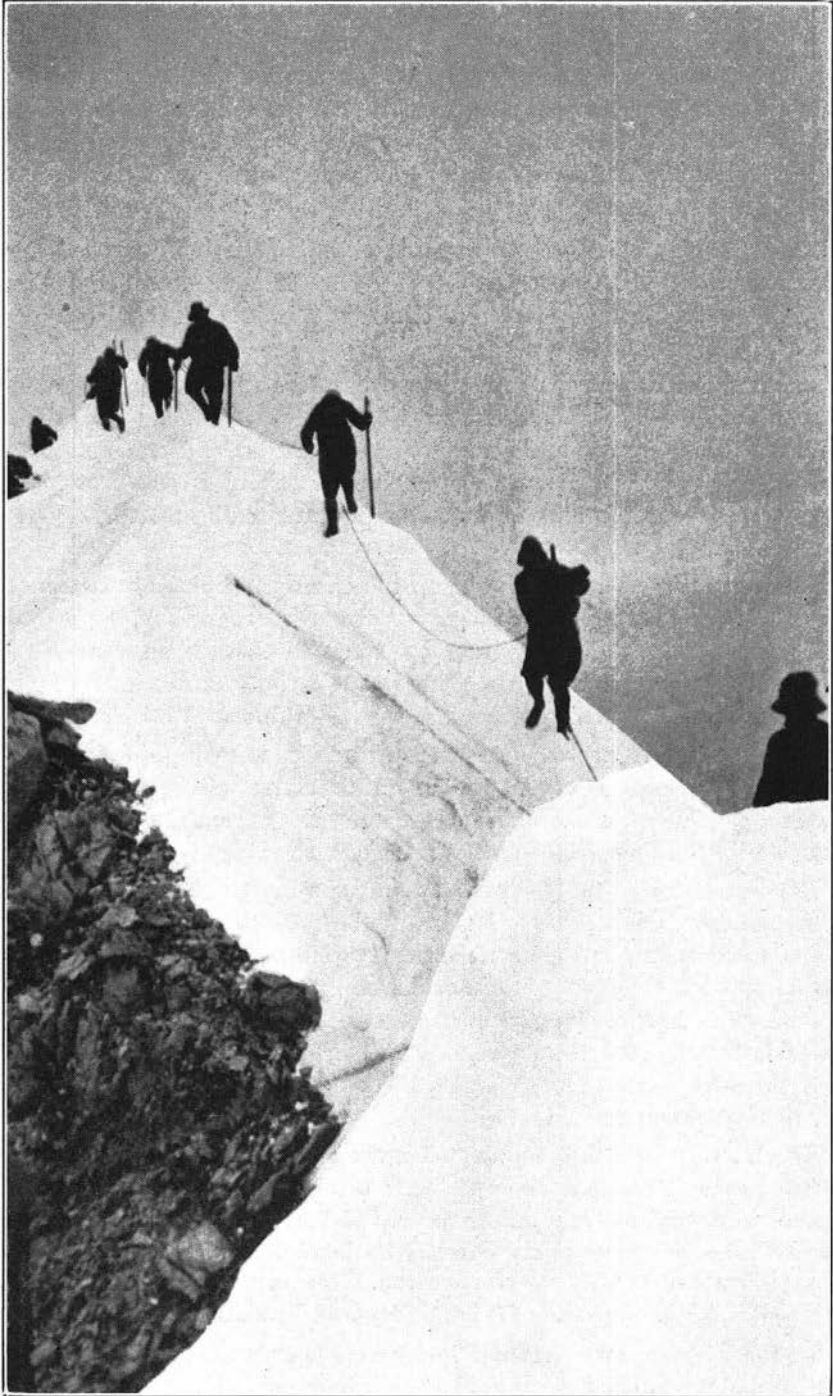
For those who preferred still less arduous climbing, there were numberless beauty spots to be reached with little effort. Such were Lake Oesa and the Alpine Meadows, where heather bloomed, gray ptarmigan pursued their untroubled way, fussy rock rabbits and gophers scurried in and out of holes, while huge brown and tawny marmots trailed leisurely among the rocks. Best of all were Lake McArthur, a veritable sapphire, mirroring many a mountain and glacier, and Mount Shaffer, a friendly peak which, owing to its central location, vied with some of its loftier neighbors in the view it commanded. Lake O'Hara itself is well stocked with fish, so the angler, too, had his reward.

The week's climbing program had one unique feature in that this year for the first time on a summer outing of the Mountaineers, pro-



MOUNT ODARAY

Mabel Furry



ON MOUNT VICTORIA

A. H. Hudson

Climbers have one foot in Alberta and one in British Columbia since this ridge forms part of the boundary between the two provinces.

fessional guides were employed. While many experienced amateur climbers have ascended various difficult peaks in the Canadian Rockies without guides, Alpine clubs have invariably availed themselves of the services of the very capable Swiss guides furnished by the Canadian Pacific Railway at Lake Louise.

From this group of five famous guides, Christian Haesler and Edouard Feuz, Jr., were delegated to The Mountaineers, and they guided the various parties that climbed Wiwaxy, Odaray (on one ascent), Victoria and Lefroy.

Each guide led one rope of not more than five climbers, and together they picked the leaders and end men for the other ropes. An end of each rope was tied around the waist of each leader and end man by a bowline, and bights tied with simple knots at about fifteen-foot intervals were fastened around the waists of the intervening members of the rope party.

While roping naturally slowed up the climbs, in chimney work, and especially when several ropes were needed to accommodate the crowd, the greater factor of safety thereby afforded more than repaid for the sometimes tiresome delays. This was especially appreciated on the knife-edged snow cornices along the summit ridge of Victoria.

During the stay at O'Hara several industrious mountaineers set to work to line the spring. They made an attractive setting for the clear water by using stones of various colors. Near Takkakaw Falls, the next week, a similar group gave a thorough cleaning to a spring there.

Nor were we without visitors. Among the most notable were President and Mrs. John Albert Cousins of Tufts College, members of the Appalachian Club and personal friends of Frank P. Graves, former president of the University of Washington. Another visitor was Hazel Hauck, who had been a member of the 1928 outing, and who had traveled by airplane from Grand Forks, North Dakota, to Winnipeg, there to catch a train early enough to enable her to reach Lake O'Hara for the last campfire.

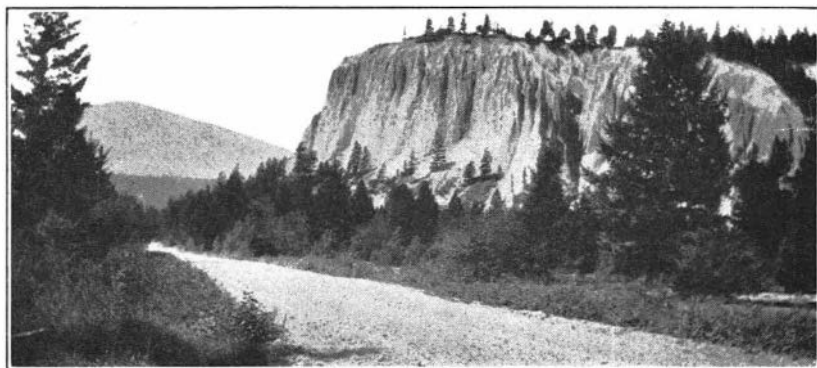
The last day in camp, Sunday, August 11, was marked by a sunrise service led by President Meany. That afternoon some walked back to Hector in order to have a day for a trip to the head of Paradise Valley. On Monday the main party came down from Lake O'Hara, and both groups reunited at Kicking Horse camp. Here an extra day was allowed for visits to Emerald Lake, Yoho Valley and Takkakaw Falls.

In the evening an invitation to see and hear an illustrated talk on the Canadian mountains and glaciers, given by Colonel Moore of the Canadian Pacific Railway at Bungalow camp, in Yoho Valley, was eagerly accepted. It was fascinating to drive at night along the raging milk-white Yoho (Indian for "Look there!" according to Colonel Moore).

Next morning the party began to scatter, some starting east by train, more west. Approximately the original group returned by automobile from Field to Golden, along the spectacular Kicking Horse Canyon, then south to Radium Hot Springs once more. From here the route of the journey north was retraced for the most part, though a more northerly highway was followed across Central Washington, including a side trip to the Grand Coulee and Dry Falls. The last camp was at Scotty Creek, just east of Blewett Pass. By this time the forest fire situation was serious and the forest rangers had been forced to close all camps. We were kindly allowed to remain at Scotty Creek, only on condition that no unnecessary fires were lighted. Consequently, candles only furnished the illumination for the graduating exercises (six major peaks) of Ellen Jenkin, Thomas Jeter, and Glen Bremerman, who had driven up from Everett for the occasion.

On Sunday, the 18th day of August, we crossed Blewett and Snoqualmie passes, and completed a round trip of over 1,600 miles, the first summer outing of *The Mountaineers* using private automobiles as a means of transportation. It was made successfully and without serious mishap. Minor discomforts served only to add spice to the enjoyment, a stretch of bumpy road, a bit of dust, a hot day, a hailstorm, a delay in the delivery of commissary or dunnage, a puncture, or, on one occasion, a broken axle. Such happenings merely provoked happy campfire chatter.

The west coast is the region of rains, and it is true that after an absence of three weeks Seattle gave us a dripping welcome, but not all the rains on the coast can ever wash from our minds the memories of those golden weeks in the rare atmosphere of the Canadian Alps.



THE DUTCH HOODOOS

Doris Sundling

MEMBERS OF SUMMER OUTING, 1929

Dorothy Adjutant, Winona Bailey, Mark Barr, Edith Page Bennett, Margaret Bernards, Hannah Bonell, Robert Brewer, Gertrude Breyen, Phoebe Chambers, Effie L. Chapman, Elsie Child, Norman Clyde, Opal Collins, Catherine Crayton, Louise Crowley, Amy Dahlgren, Helen Darsie, Violet Davies, Faye Derry, Florence Dodge, Jeanette DuBois, Mary Dunning, Helen Edwards, Peyton Farrer, Hollis Farwell, C. A. Fisher, Mabel Furry, Amos Hand, Helen Hanson, Charles Hazlehurst, Mrs. Charles Hazlehurst, A. H. Hudson, Ruth Hallin, C. A. Ingalls, Mildred Keene, Gertrude Lacock, Aletta Lehmann, Chris Lehmann, A. J. Madden, Mrs. Betty Madden, Mrs. Stella Marlatt, Mrs. Norma Martin, Mabel McBain, Emma McCullough, Dr. E. S. Meany, E. S. Meany, Jr., Ralph Miller, Ben C. Mooers, Lynda Mueller, Wm. Marzoff, Mrs. Wm. Marzoff, L. I. Neikirk, Valdemar Nelson, Helen Newcomb, Elizabeth Noble, F. A. Osborn, Agnes Quigley, Sylvia Parker, W. J. Reeve, Ernestine Riggs, Mary Shelton, Grace Skinner, Ilo Smith, H. F. Snyder, Doris Sundling, Eva Simonds, Nan Thompson, Lucile Tweed, Isabelle Whalley, Don Woods, Rebecca Wright. Cook, C. L. Doolittle; baker, J. Taylor; helper, Howard Hill.

OUTING COMMITTEE: Chris Lehmann, Mabel McBain, A. J. Madden, Aletta Lehmann.

CLIMB OF MOUNT SHAFER—8,834 FEET
(Four different parties)

Doris Sundling, Gertrude Breyen, Lucile Tweed, C. A. Ingalls, Chris Lehmann (twice), Howard Hill, Louise Crowley, Valdemar Nelson, Opal Collins, Catherine Crayton, Margaret Bernards, Ruth Hallin, Elizabeth Noble, Grace Skinner, Violet Davies, Effie L. Chapman, Rebecca Wright, Winona Bailey, Mabel McBain, Dr. E. S. Meany, E. S. Meany, Jr., F. A. Osborn, Mildred Keene, Helen Hanson, Isabelle Whalley, Stella Marlatt, Mark Barr, Edith Page Bennett, Elsie Child, Mabel Furry, L. I. Neikirk, Mary Dunning, Hannah Bonell, Helen Edwards, Amy Dahlgren.

CLIMB OF WIWAXY PEAK—8,870 FEET

Mary Dunning, Aletta Lehmann, Lucile Tweed, Gertrude Breyen, Faye Derry, Florence Dodge, Agnes Quigley, Opal Collins, Charles Hazlehurst, Ben Mooers, Margaret Bernards, Mary Shelton, Edith Page Bennett, Mabel McBain, F. A. Osborn, C. A. Ingalls, Peyton Farrer, C. A. Fisher, Helen Newcomb, Helen Darsie, Catherine Crayton, Amos Hand, Sylvia Parker, A. H. Hudson, Hannah Bonell, Mildred Keene, Hollis Farwell, A. J. Madden, Ralph Miller, L. I. Neikirk, Chris Lehmann, Howard Hill, Mark Barr.

CLIMB OF MOUNT YUKNESS—9,352 FEET

A. J. Madden, Harry Snyder, Opal Collins, Jeanette DuBois, Florence Dodge, Dorothy Adjutant, Howard Hill.

CLIMB OF MOUNT ODARAY—10,175 FEET
(Three different parties)

Mary Dunning, Aletta Lehmann, A. H. Hudson (twice), Ben Mooers, Hannah Bonell, Amos Hand (twice), Eva Simonds, C. A. Fisher (twice), Phoebe Chambers, Charles Hazlehurst, Hollis Farwell, Valdemar Nelson, Gertrude Breyen, Florence Dodge, Opal Collins, Ralph Miller, C. A. Ingalls, Howard Hill, Chris Lehmann, Grace Skinner, Lynda Mueller, Don Woods, Norman Clyde.

CLIMB OF MOUNT LEFROY—11,230 FEET

Lynda Mueller, Mary Dunning, Aletta Lehmann, Phoebe Chambers, C. A. Fisher, A. H. Hudson, Hollis Farwell, Charles Hazlehurst, Norman Clyde, Don Woods.

CLIMB OF MOUNT VICTORIA—11,365 FEET
(Two different parties)

Mary Shelton, Faye Derry, Mary Dunning, Aletta Lehmann, Hannah Bonell, Florence Dodge, Chris Lehmann, A. J. Madden, A. H. Hudson, Amos Hand, C. A. Fisher, C. A. Ingalls, Hollis Farwell, Ben C. Mooers, Valdemar Nelson, Ralph Miller, Phoebe Chambers, Mabel McBain, Opal Collins, Don Woods, Norman Clyde, Charles Hazlehurst, Lynda Mueller.

ROUND OF THE PASSES

(Abbott, Mitre, Wastach, Wenkchemna and Opabin)

A. J. Madden, Valdemar Nelson, Chris Lehmann.

THREE OF THE PASSES

Ben C. Mooers, Ilo Smith, Ernestine Riggs, Louise Crowley, Howard Hill.



ABBOTT PASS

Mabel Furry

Between Mounts Victoria and Lefroy, with Lake Oesa at the foot. The hut in the pass is barely discernible.

NORTHERN LIFE TOWER
BRINGING THE MOUNTAIN TO THE CITY

A. H. ALBERTSON



IN the Glacier Peak Outing during the summer of 1910, I was first struck by certain rock masses which suggested architectural form. Behind Flower Dome there is a vigorous up-jutting rock pylon that clearly suggested this similarity. From that trip I inherited the desire to make excursions about our home mountains to photograph outstanding rocks, peaks and pylons that in bulk



Depue, Morgan & Co.

NORTHERN LIFE TOWER
Darker at bottom, lighter at top—like our mountain peaks.

resembled idealistic architectural composition. There is a certain palisade rock face on the north side of the Cowlitz Glacier Canyon which in the right light and shadow, clearly suggests the vertical piers of some great building. As one lifts over a horizon or rounds a prow

in climbing the higher altitudes hereabouts such similarity is frequently startling as it breaks into view, and to the architect or the sculptor who works in mass, gives a double value to his explorations by the joy of sudden and particular discovery, just as the geologist, the botanist or the painter is exhilarated by a discovery in his province.

From time immemorial our architectural inspiration has been taken mostly from the forest and the vegetable kingdom. The inimitable stone colonnade of the Parthenon had its prototype in primitive temples using tree trunks for columns. Most of our traditional ornament is conventionalized from vines and flowers. The Greek Corinthian cap was taken from the acanthus leaf, the Rinceau scroll motif of the Renaissance was formalized from the vine, and legion is the number of flower ornaments. But in the Northern Life Tower, the owners' desires were interpreted first, by the material words, solidity, strength and power; and second, by the idealistic words, elevation, elation, aspiration. To express these characteristics what more natural and appropriate than to lift one's eyes to the everlasting hills? A much more sound and appealing building could be gotten if it could be made to well up out of our own environment in a way to unfold to us the strong and elevating attributes with which nature has surrounded us. In the course of many climbs among these mountains, rock masses, eroded cliffs, and broken spires were discovered strongly suggestive of powerful though crude architectural bulk of the receding type. If it were possible to secure and reveal in the building some of the massive, enduring, and inspiring character of these neighboring Cascades and Olympics, the effort would be well rewarded; and now that the capstone is laid and the flags unfurled, the degree to which the effort has availed rests with the mercies of the public and the savants to appraise.

It was the endeavor to express the meaning of solidity, durability and power by assuming the building to be hewn out of the solid block with nothing overhanging, ornament flat and incised. The window sills are flush with the wall, the flood-lighting balconies and other architectural forms instead of projecting are cut back from the surface planes like the rock-cut temples of Egypt. The lobby was first conceived as a tunnel carved out of the solid, the side walls polished, the floor worn smooth and the ceiling incised and decorated as a civilized caveman might do it.

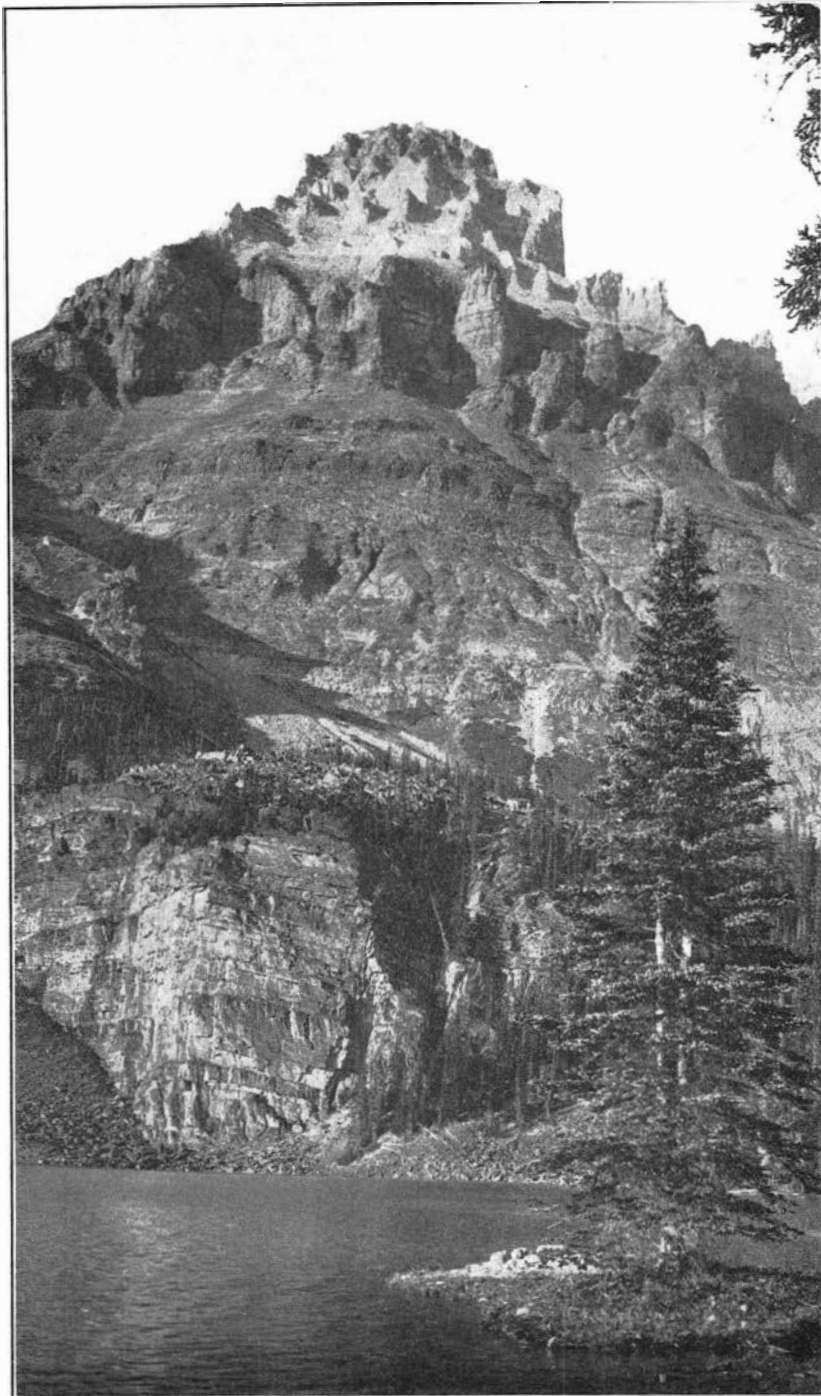
The building was conceived as rising out of the ground from the bedrock beneath, not as sitting traditionally upon the surface—as a part of the earth rather than a thing apart from it. The piers start below the ground and rising uninterrupted shoot slick and clean to their consummation, as a rock wall rises to its heights, except that parts of the lower stories of the building slope up to the shaft of the tower just



TOP OF TOWER,

Deque, Morgan & Co.

Showing rock-like character of mass and piers, and jagged profile.



MT. HUBER ACROSS LAKE O'HARA

Mabel Furry

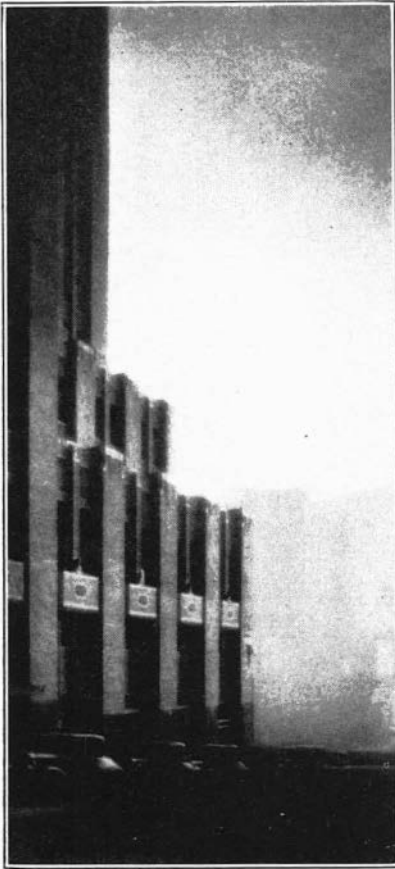
Its bulk, its eroded top, its buttresses and pinnacles crudely suggest the character of the tower.

as a rugged talus slope banks up against a cliff. The colors are earthy—natural earth and rock colors, and quite similar in tone in order to enhance the monolith and thereby solidity and permanency. No bright colors were used—only those that might be found in an old mountain wall. The base story of granite, the brickwork, the terra cotta, the window frames and even the cement sidewalk are similar in tone. The building was largely designed in the model with the drawings keeping pace. Doubtless, this is helpful in getting away from flat facades designed on flat paper and more readily permits an understanding of the meaning and massing of materials. By these and other means, was a sense of solidity, permanency and power sought.

To accomplish the qualities inherent in the second set of controlling words representing imagination was, as always, more difficult to achieve. It is to be taken as a matter of course that the monetary investment will first be made to produce a profit on the enterprise; but when, above and beyond this, it is the high purpose and ambition of a great business to be of broad social benefit to the community and to record and express this altruistic desire in a building which appeals to the higher appreciation of the community, then it is the function of the architect also, to express this high purpose by molding his materials into noble and inspiring form as far as he is able to do so.

This is altruism or aspiration and to accomplish this certain theories were put into effect. The sense of elevation or aspiration may be gotten by producing a design which gives an uplifting sense to the eye and to the mind, just as our snow-capped mountains do. The design is primarily a composition in vertical piers which soar without interruption from the sidewalk to the flag pole except, of course, the minor break-backs which, like broken crags, are introduced towards the top to announce that the completion of the soaring movement is approaching.

The piers are conceived as cycles of vertical pulsation or of mounting and surmounting surges, palisades and lesser palisades, decreasing upwards in motion and vigor, finally coming to rest against the block of the top story. The first great primary surge sends the corner piers twenty stories clear, where the motion hesitates, slows down and reforms in a two-story pier movement. From there the secondary surge carries them to the twenty-fifth floor. Again they hesitate and reform and then mount upward in a short and final urge echoed by two or three minor cessation movements. The movement of the inside piers is the same as the corner piers up to the twentieth floor after which the alternating sweeps and hesitations of the inside piers are of a slightly longer duration bringing them to their completion at a higher point against the block of the top story, thus seeking to produce an interest of harmony between the two varying sets of palisade



Depue, Morgan & Co.

Buttresses piled up against base of building like a talus-rock slope against a rampart.

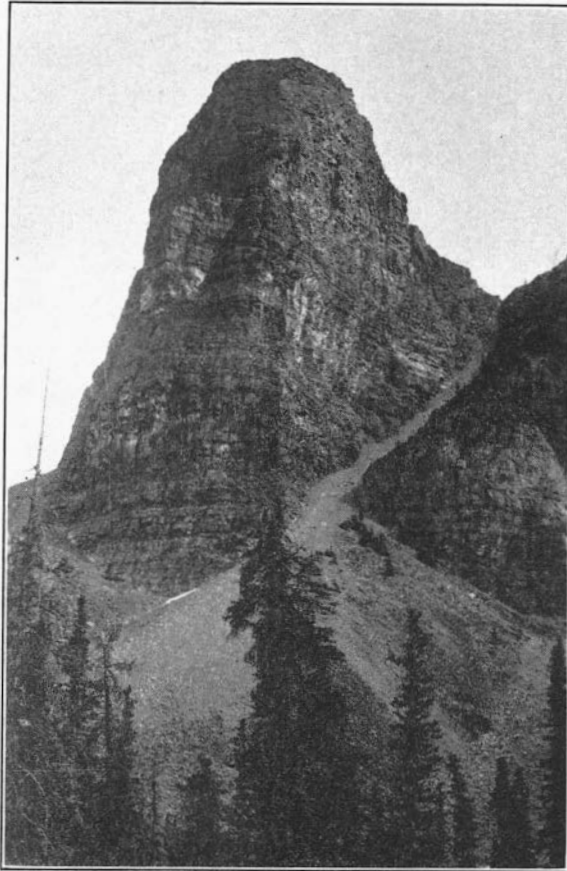


Charles Albertson

Rock buttress, Chocolate Glacier Canyon, Glacier Peak, suggesting drop-back building mass.

movements. The long sweeps and interruptions may be likened to the back-step in a dance or to the recurrent note in a musical theme. These same rhythms may occasionally be felt in nature's accidental mountain compositions, rock palisades or vertical cliff strata.

To accomplish the dominance and sweep of the piers they were made as deep as possible. Apparently there is no building wall, the composition is a succession of piers. The solid metal window frames are set between and directly against the piers and by the omission of the wall and by placing the metal frames as far back as possible the depth of the piers is thereby much increased beyond the usual window depth. The proportion between the small mullion piers and the large piers is such as to divert the attention from the small piers and by comparison to enhance the strength and motion of the large piers, and the division of the windows with a single narrow vertical division enhance the height motion of the small piers.



Courtesy of A. H. Albertson

TOWER OF BABEL, VALLEY OF THE TEN PEAKS
Showing powerful architectural form, with horizontal
strata simulating story upon story.

In order to give the piers full swing no horizontal lines were introduced at the ground floor, second floor, or any other floor; no base, no spandrel band, not even a moulding from bottom to top. There was great temptation during the period of design to introduce the usual horizontal bands at the base of the building, just as in most buildings the ground story is treated as a horizontal unit spreading the load of the building over the ground.

To overcome the horizontal line and box effect in the upper parts of the building where the set-backs occur, the piers run up beyond the set-back before they are drawn in. Without this solution the undesirable horizontal offset lines would inevitably predominate. While the faces of the building are perpendicular the brickwork at the corners of the building is so laid as to bevel in a slight amount, giving the building the appearance of a slight taper. Of course, these set-backs

and this entasis of the corners of the building add to strength and stability and produces a certain weathered mountain-like appearance as if wrought by the passing of time. Towards the top it will be noticed the corner piers are drawn in at a level lower than the tops of the piers between. In perspective, this rounds the sharp corners of the building at the set-backs much as the corners of crags are worn off by the elements.

The treatment of the skyline is unusual in that no ornament whatever is used near the top of the building—no cornice, balustrade, battlement, cheneau or frieze. It is believed that the absence of ornament at the top prevents the eye from arresting at that point, and therefore does not interrupt the sense of continuing elevation and uplift.

Possibly the greatest feeling of upward motion and aspiration comes from the grading of the brickwork from darker at the bottom to lighter at the top. It ranges from an iron ore color at the bottom to a light tan at the top. The terra cotta, sparingly used, was made of approximately the same graded colors as its neighboring brickwork, dark at the bottom and light at the top. The mortar joints also are darker than the brick at the bottom graded to lighter than the brick at the top. Due to the height of the building, the grading of the brickwork is necessarily very gradual and therefore not conspicuous and while the effect is considerable it may not always be consciously seen though always felt.

As far as known, this is the first important building attempting to secure benefits from gradation in color. Here again the influence



THE MAIN LOBBY.

Photo by Jourdan

Seemingly tunneled into solid marble and worn smooth by use.

of environment appears. During changing sky conditions the neighboring bodies of water frequently show sharp gradation in color values, shading from bright tints in the distance down to dark tones in the foreground. It was such a scene looking down on Lake Washington from Madrona Park that first suggested the gradation of color in the Northern Life Tower. Mount Rainier, the greatest neighboring landmark, is always white at the top with perpetual snow and grades in strength of color downward through the haze into the deep evergreen of the forests below. Before arriving at a decision to grade the building, these pronounced natural examples were actively discussed and appraised. In fact everything in nature shows some variations in color, nothing is flat. The colorist knows that.

The building was built under the Seattle set-back law, sponsored by the writer, which was the earliest one in the United States, antedating the well known New York Zoning and Set-back law. It is constructed of the same material on all four sides and no utilities, such as fire escapes, stacks, roof tank or elevator pent house were allowed to obtrude. The building is self contained and faces the four winds.

There is no doubt that the Northern Life Tower is a more natural and a more vigorous building because of the presence of our inspiring mountain environment.

SKIING IN SWITZERLAND

IRVING M. CLARK



SKIING was introduced in Switzerland as a sport and as an aid to winter mountaineering some thirty years ago. Apparently the natives of the Alps have never used either skis or snowshoes to aid them in getting about the mountains. This is strange, in view of the fact that the Scandinavian peoples have probably used them for a thousand years or more.

The sport had acquired a certain popularity among the Swiss even before the war, but it is only in the past ten years that it has become the passion of the multitudes.

The Swiss Alpine Club itself was slow to give it official recognition and was severely criticized by its own members for its lack of interest. Now, however, the club gives it strong financial support in subsidies for instructional courses, ski huts and annual competitions.

Various branches of the club have ski sections which arrange runs almost weekly throughout the winter. By leaving Montreux, Lausanne or any of the other cities along the shore of Lake Geneva, for example,

at seven or eight of a Sunday morning, the enthusiast can have a fine run with a descent of 2,000 or 3,000 feet or more, and be home again for supper. The first 2,000 feet he will usually climb by train, and he will probably choose a route where at the top he will find a club hut with a fire going, a caretaker in attendance, and plenty of food and drink available. These ski huts are multiplying with astonishing rapidity and draw a crowd every Sunday in winter.

The facilities found in all the important centers of the Alps, and more particularly the mountain railways are, of course, an enormous aid to the skier. The skiing country in the Gstaad district, in the Bernese Oberland, is served by railways in three different valleys, making possible a very great variety of runs.

The elevation of this region is roughly from 3,000 to 6,000 feet, and most of the slopes are of moderate inclination and not too heavily wooded. The snowfall is not more than one-half or one-third of that in the Cascades, but is still sufficient to afford good sport most of the time from December to April. There is very little wind, and more sunshine than we are used to. During my three winters in this section there have been very few days when weather conditions have been bad enough to spoil sport. Unfortunately the same cannot be said of snow conditions. There is an occasional thaw; perhaps a long period of fine weather when the snow becomes glassy; and there are fresh falls of heavy snow, all of which are discouraging to the skier. On rare occasions, too, the weather is too cold and dry; both snow and weather look perfect and the skier goes jubilantly forth. But the ski won't slide; the snow feels gritty; it lacks the moisture to make it slippery. General conditions of weather and snow are probably much better here than in the Cascades. The variety of exposure of the slopes is also a great advantage. When the south slopes are in poor condition, those with a northern exposure may offer good running.

The average day's run involves a climb of 2,000 to 3,000 feet with a run down of perhaps 500 to 1,000 feet more than the climb. Twelve hundred feet an hour is perhaps the average rate of ascent. Almost everyone here uses sealskins for the climb, and they are invaluable. It is folly for the skier to spend his energy getting up the hill; unless he is an expert he will need it all for the run down. And the really expert are few, indeed. According to my observation, it takes several years to acquire even moderate skill, and with the exception of the youngsters, I have seen no expert who have had less than seven or eight seasons of intensive skiing. The most graceful and finished skier I have seen, Barry Caulfeild, began at the age of about thirteen under the tutelage of his father, who is one of the best known authorities on the sport. Hans Frautschi, one of the best among the Swiss, has been at it twenty years. He it was who once did the Rinderberg run, a descent

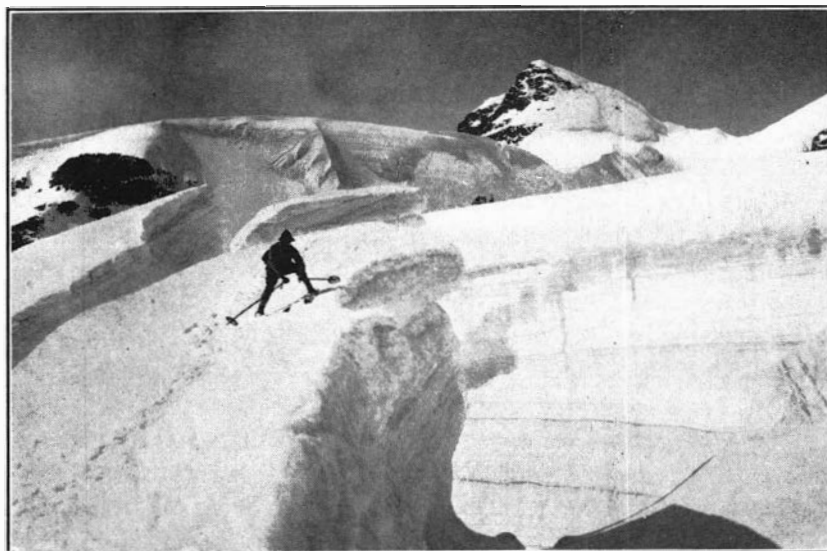
of 3,800 feet, in six minutes forty-five seconds. He took the whole thing straight, and had only one fall.

Good instruction is essential to progress. In some Alpine resorts courses are organized for beginners, and the excellent Bilgeri method is used. This includes exercises to develop skiing muscles, practicing the turns, and instructional tours or runs. The method is astonishingly successful. It is well outlined in the excellent little book, "The Rudiments of Ski-Running," probably the best manual for the beginner. But a competent teacher is a great help. It is amusing to see a class of beginners when the instructor orders them to turn for the run down the slope by jumping about. They know they can't do it and that they will die in the attempt, but many of them *are* doing it inside of their first hour on skis. Within a week they are going on tours involving a descent of 1,500 or 2,000 feet, and enjoying it. Needless to say, they have many falls and the kick turn is the favorite, but within a few weeks the more apt are using the stemming turn and even bringing off an occasional Telemark or Christiania. Informal tests are given from time to time in which the candidate must climb 1,800 feet in an hour and a half and make the descent in half an hour. He is then graduated into the so-called "experts" section, and is permitted to take the longer tours. (I am not now referring to the tests of the Ski Club of Great Britain.)

By this method any one having a few weeks to devote to it can get hold of the rudiments of the art, but it is difficult for me to see how one can do it who has only an occasional Sunday for the sport. However, an hour or two of instruction under a really competent teacher would save weeks of helpless floundering. And certainly there are few other sports, if any, in which the novice can begin at once to get such exhilarating fun. Under certain conditions, such as a fresh fall of powder snow, even a beginner can make a descent of 1,000 or 2,000 feet with keen enjoyment and very few falls. When he goes out the next day, however, he will probably wonder why the surface has suddenly become so treacherous.

Another advantage of the sport is that there is no age limit. I have been out with men well on towards seventy who are good skiers, men who didn't take it up until they were past fifty. And Swiss children seven or eight years old make us all envious of their skill. The well-known authority, Vivian Caulfeild, however, thinks it is better for children to wait until they are ten or twelve years old before taking up the sport.

In his book, "Modern Skiing," A. H. d'Egville says that it is not a dangerous sport. That statement is perhaps a bit overdrawn; I should think it was at least more dangerous than golf. The great menace is the avalanche. Even the beginner should at once acquire some knowl-



CREVASSE NEAR
JUNGFRAUJOCH

Courtesy of Jungfrau Railway

edge of the conditions favoring avalanches—weather, snow and terrain—and should resolve to take no chances. I have never heard of an avalanche accident in the Gstaad district, but other regions of the Alps are not so favored. In choosing a location for a ski hut this matter should have careful consideration. The Mountaineers will doubtless see to it that the sources of the danger, the means of avoiding it, and the measures to be taken in the event of an accident, are made known to its members.

In most of the Alpine resorts above 3,000 feet the winter season is now more popular than summer, and hotel prices are substantially higher. A few days before Christmas all the hotels suddenly fill up to the roof and remain crowded for some weeks. The season lasts from December to March, inclusive. Good sport is often to be had well into April, and May and June are said to be the best for glacier tours.

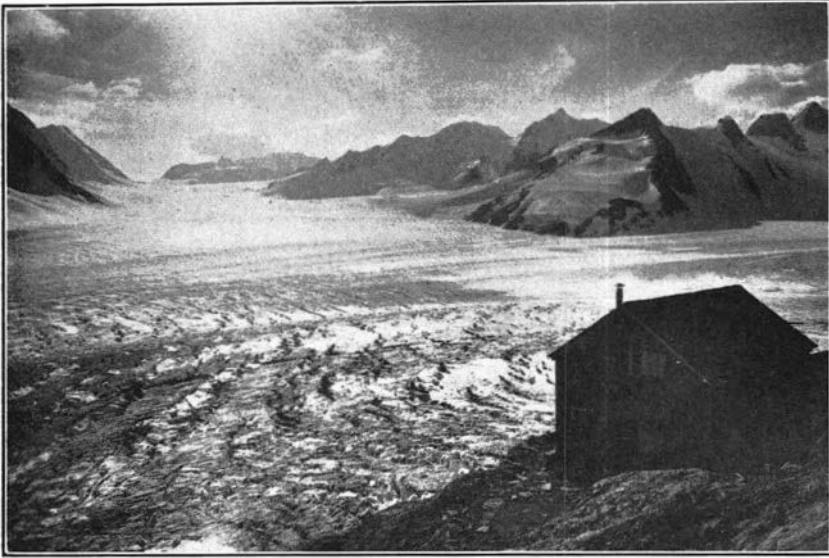
My only experience on a glacier was in the month of March. I took the Jungfrau Railway to its terminus at 11,300 feet. Here we stepped off the train into a station inside the mountain so spacious and fine in its appointments that my wife remarked that it reminded her of the Grand Central Concourse. We had our lunch on a balcony which hangs above the glacier and affords a magnificent view. The sun was so hot that we were driven into the shade. The railway station and good hotel built inside the mountain at this elevation are a monument to the engineering skill of the Swiss.

In mid-afternoon the guide and I went out through a tunnel out of the mountain, put on our skis and set off down the great Aletsch Glacier, the biggest in the Alps, fifteen and one-half miles long. The first half-hour was difficult going, down a steep slope on which the snow was frozen into ripples. From there on the gradient was gentle, but the unbreakable crust gave us such a fast surface that it was necessary to check speed from time to time. The weather was glorious, and it was delightful running the few miles down to the Concordia-Platz, the junction point of four glaciers. Here we found a bare rock where we sat for an hour basking in the sun and enjoying the quiet majesty of the scene. Near this spot, at an elevation of 9,300 feet, is the Concordia Hut of the Swiss Alpine Club, where we spent the night. Our first act on entering was to take off our nailed boots and put on the clogs provided in the hut—to save the floors, I suppose. Then we climbed to the left and got a few—a very few—bundles of wood. Each bundle contains four to six sticks of stove wood and costs 40 cents. The wood is brought down over the glacier from the Jungfrauoch in the spring. The money for the wood, as well as for the hut fees, 20 cents a night for members, is deposited in an iron box hanging on the wall. We didn't start our fire till dark, and used it only for cooking. There was a plentiful supply of clean blankets, and the straw spread on the floor in the kitchen was a comfortable substitute for a bed. Sunset on the Monte Leone group, at the foot of the glacier, was lovely. A soft, rosy light faded, leaving a beautifully tinted sky, deep purple shading through mauve and rose to pink and green.

At 7:30 in the morning we were off down the glacier. It was cold in the shade, but we were soon in warm sunshine. The going was better than the day before and occasionally we were able to enjoy free running. Part of the time we slipped along gently at only four to five miles an hour. What a boulevard for the skiers! And what a thrill to come suddenly into full view of the Matterhorn! Below the middle Aletsch Glacier we reached the region of open crevasses. Here the snow suddenly changed in character; it was frozen hard throughout our trip, but here it had a pock-marked appearance. The guide called it frozen powder. It was an excellent skiing surface, easy to turn on and safe for free running. From this point on the glacier was a net-work of crevasses. From a little distance off I suppose it would have seemed impassable, but the guide had little difficulty in finding a way through. The crevasses were all partially filled with snow; ice was visible in the side walls above the snow-filled portion, and there was a snow cap two or three feet high. We were not roped, but I think we ran little risk, except perhaps during the last quarter of an hour when at times we could have reached out with our sticks and touched the lip of a

crevasse on either side. We left the glacier near its end, at an elevation of about 6,650 feet.

From here we climbed up to the Rieder Furka and so down to the Rhone Valley and Brigue. It was a fitting way to spend the twenty-first day of March. We left the dead of winter on the glacier to walk down a dusty trail through the woods, with a brave show of spring flowers, to the warm valley of the Rhone.



CONCORDIA HUT AND PLATZ

E. Gyger, Phot., Adelboden

THE DEVELOPMENT OF SKIING IN THE MOUNTAINEERS

ROBERT H. HAYES

IT WAS at the beginning of the present decade that skis were first introduced at Snoqualmie Lodge. Their use was confined at the outset chiefly to those who had obtained their experience in other sections of the country and the rank and file were content to make the shorter trips that the safer and more dependable snowshoe afforded. By 1922, however, the sport had increased in favor to such a degree that a trophy was offered for competition among the women. In 1923 the Harper cup was added for novice skiers among the men and women, and the rivalry for these two cups was keen. As a result of these contests and because the sport manifestly offered so much more in the way of enjoyment and delightful thrills, the more venturesome became attracted and the ski gradually supplanted the more humble snowshoe. The latter became as rare at the lodge as had been the ski but a few years before. The contests for the Women's Trophy

and the Harper cup for novices became the climax of the season's winter sports activities.

The winter of 1927 saw the sport attain such popularity that the lodge for the first time in its history was filled to overflowing many week-ends through the height of the skiing season. Not only had the art acquired many followers, but experts had been among us, men who performed on the long sticks in such a way as to give us a whole new understanding of the possibilities of the sport. For the first time proper technique commenced to be appreciated and sought after, and with this came an understanding of what the art of ski mountaineering opened up. Regions hitherto inaccessible while the winter snows held sway now became not only easy of access but the most delightful of playgrounds. Old acquaintanceships of summer days, peaks, and mountain parks, could now be renewed in winter months on skis.

The board of trustees, taking official cognizance of the rapidly growing interest in the sport, formed a committee to assist in the development of skiing and this committee, under the leadership of Ernest N. Harris, began to function during the season of 1927-28. This committee supervised the cup races of this season and arranged for instruction to be given at the lodge. The major consideration of this committee, however, was the increasing of facilities for skiing to take care of the greater number of people now addicted to the pastime. After considerable investigation a site was chosen on the Northern Pacific Railway at the eastern end of Stampede Tunnel, at the station known as Martin. Our president, Professor Edmond S. Meany, graciously purchased the land and presented it to the club. On November 11, 1928, the hut now known as the Meany Ski Hut was completed and dedicated before a throng of enthusiastic members. Great credit is due to Mr. Harris and his colleagues for the untiring effort and the careful planning and forethought exercised in the construction of the hut.

The immediate popularity of the new structure at once justified the money and effort expended. Week after week, under the capable direction of Herman Wunderling and W. J. Maxwell, every available reservation was taken. The ease with which the hut could be reached, its physical comforts and the fine runs almost at its front door attracted many to whom the rigors of the winter sports had formerly seemed too arduous. The lodge, too, in this season of 1928, had many visitors, despite the fact that it labored under an adverse train schedule. It offers greater possibilities for early season skiing in the upper basins of Silver Peak, and similarly good runs may often be obtained in late spring when the snow has vanished from the lower elevations.

Both the expert and the novice will find runs to suit their taste in the vicinity of the lodge. To one who has acquired a degree of pro-



Courtesy of Gebr. Enoch Verlag, Hamburg

SLIDING ON THE LEVEL—A typical position of the rhythmic three-step. Notice the natural position of the legs, the bent-over body, and the way in which the weight is placed on the right pole while the left pole is brought forward by a wide swing to the side, executed almost exclusively by the wrist.

ficiency in the gentle art, an ascent of Silver Peak on skis is a trip of never-failing interest; the fine views of the whole lodge country on a clear winter's day, the intricate and devious route to be selected for one's line of ascent, and then the climax, the descent. One's feet have become shod with wings, wings which struggle to snatch their wearer from the gleaming white slopes that are flashing by. The steep slopes, the sudden rises and depressions, the twisting, bewildering runs through the timber, call for all the skill and technique acquired in the many hours spent on the practice slope. An occasional fall merely adds zest to the runner's delight. To one who has enjoyed such a day the fascination of the sport becomes thrice apparent. Forgotten are all his early struggles with the refractory sticks, the spills with their strains and bruises, the wild threshing in many a snowbank, the times when half the drift slipped down his neck. Today, in his flying course down the mountainside, stemming, swinging, checking, leaning into the winter wind as he takes this run straight, swerving now to the left, then to the right in well controlled turns to avoid obstacles half concealed by the snow, there is added to the skier's pleasure that keenest delight of all—the thrill of mastery, the satisfaction of achievement.

With the added impetus created by the opening of the Meany Ski-Hut a less apparent but significant development was also taking place. Within the larger group of skiers a smaller nucleus was forming to

whom the proper technique and correct equipment was of paramount importance. Books were read and criticized point by point. The finest skis both of Norwegian and American make were tried out. Almost every article of equipment and apparel listed in the foreign catalogues was tested and discussed as to its adaptability to our own conditions. Several of the progressive stores in the city have kept pace with this group and have been keenly interested in the results of their experiments. The consequences are that the beginner of today has a tremendous advantage over the novice of two or three years ago. Almost every article found at these stores has been tested under our own conditions and such purchases can be made with confidence that the articles are correct and of the type best suited to the kind of skiing afforded in the Pacific Northwest.

This group has been of value also in that through them the general standard of skiing has been raised. The beginner is no longer content merely to be able to negotiate a straight run and remain standing. The various turns, the art of braking, sudden stops, and all the other complex maneuvers have acquired a degree of importance not heretofore considered.

It is the aim of the ski committee this year to keep the Club in the present position of prominence it now occupies among skiing organization of the Northwest. Instruction will be offered this coming season. A series of tests has been worked out and will be submitted to the ski enthusiasts for their consideration. These tests which have served as the foundation of the advancement of the standard of ability in nearly all European ski organizations have been carefully adapted to suit our own particular conditions and problems. The classification of skiers by means of these tests will enable the ski committee more efficiently to work out the complex problem of systematic instruction. It will enable the members of the committees to advise the individual as to what trips are within the scope of his ability in the vicinity of our two skiing bases. It will assist in segregating members for the various competitions. Such classification should also stimulate each individual to improve the standard of his skiing so that he may move into the division next ahead.

Because of the excellent location of its two cabins, by reason of its large membership with its enthusiastic attitude toward the sport, and because of the foresight and the progressive attitude on the part of those in whom we have entrusted the destinies of our organization it is safe to predict that the Club will continue to maintain the lead it has already established in our Northwest in that finest of winter sports—skiing.

HISTORY OF SKIS AND SKI-RUNNING

A Chapter From Ski-Running by

K. VILHELM AMUNDSEN

Translated From the Norwegian by A. W. Anderson

HE question of the age of skis and their original birthplace is still unsolved. The answer, in the first place, is of interest to the lands where ski-running, through the centuries, has been a necessity for the people, and where the use of skis is traditional and deep-rooted. But it is also of interest in the many countries where, during the last twenty or thirty years, the "sport of sports" has become widespread among and cherished by large numbers of the population. Furthermore, the solution of the problem has, culturally, great historical importance. Skis have been an important and, in many places, indispensable aid in the fight for existence. With the help of them man has subdued large and otherwise scarcely habitable portions of the earth.

In 1890, Fridthjof Nansen in his book, "On Skis Across Greenland," submitted the question to a thorough inquiry. Through his own investigations, and on the basis of the opinions which the then Pro-



Courtesy of Gebr. Enoch Verlag, Hamburg

KICK-TURNING—The weight of the body rests on the left leg and is evenly secured by both poles put down symmetrically, while the right leg is kicked up and its ski turned quickly to be brought down as close as possible to the other ski.

Professor Gustav Storm and Secretary Andreas M. Hansen held, Nansen declares that the logical conclusion is that skis were distributed over the earth by various tribes and peoples who learned the use of them in a common region and who, thereupon, in their wanderings in different directions, carried them along and made their use widespread. This common region is supposed to be the territory around the Altai Mountains and Lake Baikal in Asia.

Skis are supposed, therefore, to have come to Norway from the North through Finland. Professor Storm thinks that the oldest historical information indicates that ski-running with the Norwegians and Swedes must have been borrowed from the Lapps.

The theory of the extension of the use of skis in the vanished ages through Siberia eastward, northward and westward, as the tribes wandered, is based on comparative linguistics. Andreas M. Hansen "has followed the skis through the Finno-Ugric and Siberian languages' unknown and uncertain paths." Built on philological and historical inquiries, there are considerable grounds to accept Nansen's result, but it is not out of the question that the use of skis can have sprung up independently in separate places within the immense area we have spoken of, instead of having a joint source, a single origin.

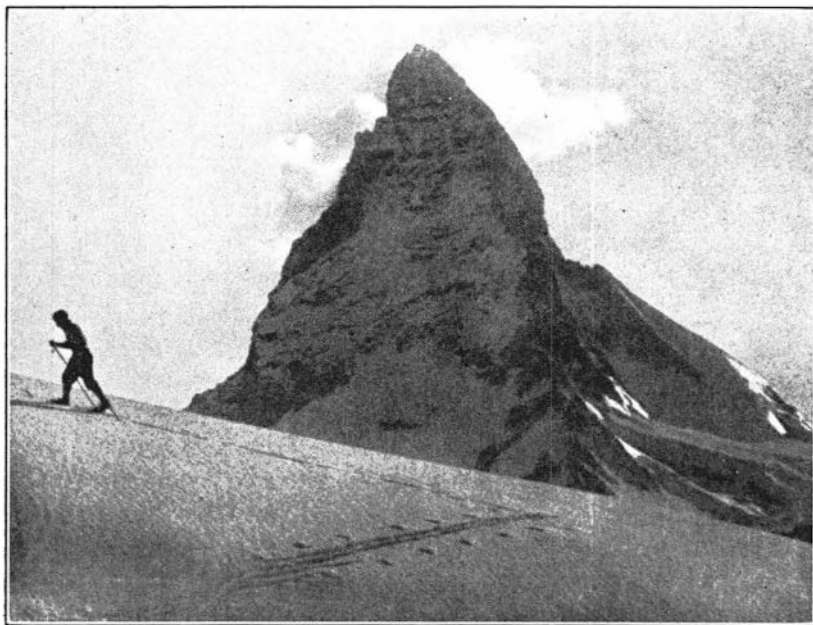
In remote times when the tribes had to live through a winter of heavy snow it was natural and inevitable that something was discovered which prevented one from sinking deep down and sticking in loose snow. Travel and intercourse, but first and foremost, hunting and trapping, and existence itself, brought forth a device with which one could hold one's self up, and this device was the primitive snowshoe. The snowshoe was an imperative necessity in order that one might live in snow countries; about skis this cannot be claimed absolutely. With snowshoes one can survive. The Indians in North America did not have skis, only snowshoes. Although, according to Nansen, a new version states that skis of a very narrow style were used by North American tribes. One or another sort of snowshoe is so necessary that they must have originated, independently of each other, in many places in the past ages.

Snowshoes, the devices man bound on the feet to hinder sinking in loose snow, were of different shapes and materials. Xenophon, in 400 B. C., learned from the natives in the Armenian mountains to tie sacks around the horses' hoofs. Strabo, about 20 B. C., tells that, in the Caucasus, the natives fasten on their feet leather plates or round disks with spikes. There is also mentioned by another author a device of willows, that is, something similar to the Norwegian "truge" or round snowshoe. A beautiful, independent type is the Indian or Canadian snowshoe.

As a more perfect means for travel over the snow, therefore, the ski developed. There is great likelihood that it was evolved through a

gradual development of the primitive snowshoe by stages from a round to an oval and oblong form. In order that the snowshoe should not stick so easily in the snow while under way, it was given an upward bend in front. From this the step is not far to the short, broad, skin-covered "truge-ski," such as the skis from Inner Siberia.

It must have been in a hilly region man first took to sliding on his snowshoes, on frozen, icy crust or hard snow. The snowshoes must have been without spikes, skin clad, smooth. Necessarily, man with these skin-covered, sliding snowshoes, was also able to glide over flat, hard snow. At this point the evolution had reached forward to skis. Nansen phrases it as follows: "but from the moment the movement goes over to sliding the primitive snowshoe has evolved itself into a ski." And he believes, as previously stated, that the place for this important change, for the youthful ski-running's first, tottering step, is the Altai Mountains. And when? In the morning of time, when the now widespread Finno-Ugrie people and the Siberian tribes still lived together and as neighbors in those regions.



Courtesy of Gebr. Enoch Verlag, Hamburg

SKIING UP-HILL NEAR THE MATTERHORN—Notice the bent-over position of the body with the poles held close and always in such a way as to prevent any slipping back. The movement is one of perfect rhythm, as can also be seen from the track with the even marks of the poles.



Phot. Berg & Sport-Film Ges., Freiburg
 Courtesy of H. O. Giese

A PERFECT SKI JUMP by Hans Schneeberger on the old Feldberg hill in the Black Forest, Germany. The jumper is flying away from the camera. In the background the open slopes and timber areas of one of the best skiing regions in Europe.

SKI-JUMPING

HANS-OTTO GIESE

SKI-JUMPING is the climax of all athletic accomplishments. It requires a maximum of skill, strength and courage, and it is the most sensational and spectacular individual performance in the whole wide field of modern athletics. This is not only realized by the large crowds that stand for hours in the snow on a steep hillside spellbound to the point of hysteria by the apparently hair-raising foolhardiness of the ski-jumpers, but it is also felt by the individual performer who is overcome with an experience of happy excitement that may even be called ecstasy.

Ski-jumping is not an easy matter. It not only takes years of practice, but also a certain amount of inborn nerve and ambition. It is a strange feeling of mixed courage and fear that one experiences in taking the first jump over a fast course with a high take-off and a steep landing-slope. But after mastering the crude essentials of speed and balance, of leaning forward fearlessly, and of stopping at high speed without the help of poles, there is no reason why the average able-

bodied boy should not be capable of jumping 50 to 100 feet and enjoy the feeling of self-confidence that naturally comes with this and which is so important everywhere in life.

For ski-jumping is not as dangerous as it seems to be. A ski-jumper meets no obstacles in the air where his initial speed becomes greatly reduced, and his landing on a steep slope is nothing but a continuation of his fall downwards, only not through the air as at first, but on almost frictionless ground that gradually becomes level.

After receiving the signal that the course is clear and thoroughly prepared for a jump, and after fastening his specially and carefully waxed skis securely to his feet, the jumper starts down the upper run that leads to the take-off in a straight line. He crouches down as low as possible, not only in order to reduce the air-resistance offered by his body to a minimum so as to attain the greatest speed possible, but also to keep his balance better and easier, as this is of the greatest importance



Courtesy of H. O. Giese
NELS NELSON JUMPING 235 FEET on the big hill in Revelstoke, B. C., on February 6, 1924. Notice the spectacular position of his body, the judges' stand, the 100-foot and 150-foot markers on the steep landing-slope.

for any successful take-off. His speed increases very fast and his whole attention is given to the balance of his body and his skis, while his eyes are fixed on the track and the quickly approaching edge of the take-off which is marked by flags on each side. His whole being is all set for the one thing at hand, his jump. At the right moment he leaps forward and upward and is now in the air, flying like an eagle. He knows the eyes of the gasping crowd are on him and he hears the click of many cameras. But his whole attention is centered on the difficult task of keeping his skis parallel in the same plane and also to the ground below him, and of bringing his body in as easy a manner as possible forward into a position of at least a right angle to the landing-slope. He knows exactly how far his take-off and speed will carry him, and his eyes, trained by experience, rest on that one spot. He lands there with a sharp report that indicates the perfect position of his skis, leaning forward still more and advancing one foot far out in front of the other so as to absorb more easily any shock that a long jump or imperfect form may bring and so as to keep his balance intact. He then finishes down the length of the course, at first increasing and then slowly decreasing speed, and comes to a sudden stop with a fine *Christiania*. The crowd still cheers and that gives him still more of that supreme happiness that he already felt while in the air and after making that good landing. With long, gliding steps and just a few little awkward movements that speak of the terrific strain just gone through, he comes across the flat, back to the bottom of the hill, where he takes off his skis to carry them up again for another jump. In climbing up the steep hillside he stops occasionally and jokes with friends in the crowd and also watches the other jumpers as they fly through the invigorating winter air, in that wonderful setting, with the excited crowd, and the snow-covered forest and mountain peaks in the sunshine.

He can thus criticize their form and study the peculiarities of all conditions. He examines once more the snow for wetness and solidity, and he studies the curve of the landing slope and notices where and how hard the other jumpers land. He watches them carefully and smiles when some jumper takes off by simply sliding over the edge of the high take-off because he lacks the nerve to leap forward into space and so fails to get his body into the necessary right-angle position. Therefore he is bound to take a spill clear down to the very bottom of the long and steep landing-slope. It looks terribly dangerous, but if one properly relaxes and knows how to fall, it is quite harmless in most cases. Some jumpers wildly swing their arms while in the air and one can pick out the more experienced jumpers by their quiet and self-assured form, with arms even, knees straightened and skis parallel to the ground, altogether a picture of perfect control over many elements, each of which is difficult and apparently dangerous enough in



Courtesy of Gebr. Enoch Verlag, Hamburg

SIDE-STEPPING on a fairly steep slope. Notice the correct position of the poles and the apparent force with which the right ski is being put down to secure the firm hold necessary for the next step.

itself, and the combination of which causes that superb thrill that takes such a dominating grip of ski-jumper and onlooker alike.

The object of ski-jumping is to jump in good form as far as possible. Only standing jumps count in any real competition, and those that fall at, or shortly after, the landing, even if they should jump further, have no chance of winning a tournament. Points are given for distance and for form. The distance is measured from the edge of the take-off to the first deep foot-print, not to the edge of the hindmost ski. Points for form are given under consideration of the jumper's approach to the take-off, his taking-off and demonstration of courage, his general form in the air, especially with regard to ski position, straight body and general self-assurance, his landing skill and his finish. Jumps over great distances are only possible in good form, that is, with perfect balance and efficient use of all elements such as air-resistance and the build of one's own body.

The number of Mountaineers interested in this manly art of ski-jumping is surprisingly large and is growing more and more. Their enthusiasm was noticeably increased by going to, and successfully participating in, the Cle Elum Ski Tournament on February 17, and the Mount Hood Tournament near Portland on March 17, 1929. In order to keep up with the rapid development of skiing everywhere in the West, we, The Mountaineers of Seattle, must take up ski-jumping as

a form of skiing with seriousness and acquire the necessary skill and experience that can be ours without great effort. Skiing is the king of all sports and will spread further and further in the next few years, but ski-jumping is its crown and the highest expression of its greatness. With the good general skiing conditions that we have here, and with the husky and courageous human material growing up in this wonderful Pacific Northwest, we can develop among The Mountaineers real ski-jumpers, as good as those anywhere in this or in any other country.

TROPHIES

T. DEXTER EVERTS

IN 1922, our first skiing trophy was presented, undoubtedly the first to be offered by any individual or group of persons in Seattle if not in the entire state. Today we find ourselves the owners of eight fine cups which henceforth will be awarded annually by the Ski Committee.

In the order of their presentation, these are:

WOMEN'S SKIING TROPHY. Donated by Edith Knudsen, Helen MacKinnon and Elisabeth Wright Conway for the purpose of encouraging skiing among women members, the contest to be open to women members and to be competed for at Snoqualmie Lodge on a February outing; fifty points to be given for best form, time and excellence in ascent and descent; twenty-five for cross-country run of 220 yards and twenty-five for straight ski slide to Lodge Lake and stop.

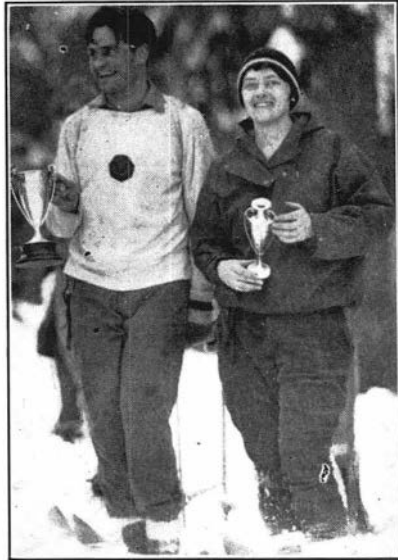
Winners—

1922 Stella A. Shahan	1926 Edna F. Walsh
1923 Ethel Costello	1927 Christine Hermans
1924 Edna Lass	1928 Ellen E. Willis
1925 Blanche L. Van Nuys	1929 Hermia Thomson

MOUNTAINEER CROSS-COUNTRY SKIING TROPHY. Presented by Paul C. Harper as an incentive to the inexperienced. The contest to be open to members who have not had more than two years and one month's experience on skis previous to the date of the contest. The course is to run from a point near Snoqualmie Lodge to a mark at or near the U. S. Geological Survey "hub" at the summit of Snoqualmie Pass, and return, with points given for speed, less one point for every fall experienced en route.

Winners—

1923 Charles B. Browne	1927 Paul Shorrock
1924 Alex Fox	1928 Otto Strizek
1925 John Gallagher	1929 Otto Strizek
1926 George Russel Rice	



A. H. Hudson

Courtesy of The Seattle Times

Hans-Otto Giese

Ellen Willis

Otto Strizek

Hermia Thomson

TROPHY WINNERS

Since the Ski Committee has been established, these two first trophies are now competed for under its rules for cross-country races.

THE MEANY SKI HUT TROPHY. Presented by the University Book Store. The women's annual race. The cup is open to all Mountaineer women contestants. The race is to cross-country over a course of moderate length and time alone is to determine the winner.

Winner—

1929 Ellen E. Willis

THE MEANY SKI HUT TROPHY. Presented by the University Book Store. The men's annual race. This cup is open to all Mountaineer men without restriction. The race is a cross-country event, in which time alone determines the winner. The course is to be determined by the Ski Committee.

Winner—

1929 Hans Otto-Giese

SKI PATROL TROPHY. Donated by Andrew W. Anderson and Norval W. Grigg and accepted by the Ski Committee May, 1929. The terms are printed in full.

Purpose. The Ski Patrol Trophy is presented to The Mountaineers in order to develop cross-country skiers; to promote cross-country skiing, and to make better known to club members the area along the summit of the Cascade Range lying between Snoqualmie Lodge and Meany Ski Hut.

Eligibility. All members of The Mountaineers who are amateur skiers and have reached their twentieth birthday by the January first preceding the race are eligible to compete.

Contestants. A patrol shall consist of three skiers, not more than one of whom shall be a Class A skier, as hereinafter designated.

Winners of the Harper or Meany Ski Hut cups, as well as prize-winners in outside competitions of a similar nature, shall be Class A skiers. If ski tests are adopted by The Mountaineers, those passing the highest test are to be considered Class A skiers. In the event of no classification, the Ski Committee shall rule, bearing in mind the purpose for which the Ski Patrol Trophy is presented.

Course. The course shall be along the high line route between Snoqualmie Lodge and Meany Ski Hut, via Silver Peak trail, Olalee Meadows, Mirror Lake trail, Mirror Lake, Yakima Pass, Meadow Creek, Dandy Creek and Dandy Pass, or vice versa.

Packs. Each contestant must start, carry and finish with a pack weighing not less than ten pounds, including pack-sack, emergency ration, compulsory equipment and optional equipment.

Any type of pack may be used.

Each contestant must carry an emergency ration weighing not less than one and a half pounds. This ration is for emergency use only and unless conditions require its use, it must be checked in at the finish. The composition of the ration is optional.

Each patrol must carry the following compulsory equipment, divided as the contestants see fit:

Light axe.

Two compasses.

First Aid equipment (equivalent to official Boy Scout First Aid kit).

Three new candles.

Contour map of district.

Fifty feet of $\frac{1}{4}$ -inch rope.

Each contestant must carry the following compulsory equipment in addition to his emergency ration:

Electric flashlight (equivalent to two large dry cells).

Matches—one small box.

Snow glasses.

Extra sweater or jacket.

Extra pair mitts.

Extra pair socks.

Bandana or large handkerchief.

Optional equipment should include repair articles, ski wax, trail lunch, safety pins, shoe laces, knife, extra clothing, cup, spoon, thermos flask, Meta fuel, watch, Primus stove, etc.

Contestant's ordinary clothing, such as shoes, socks, underwear, pants,

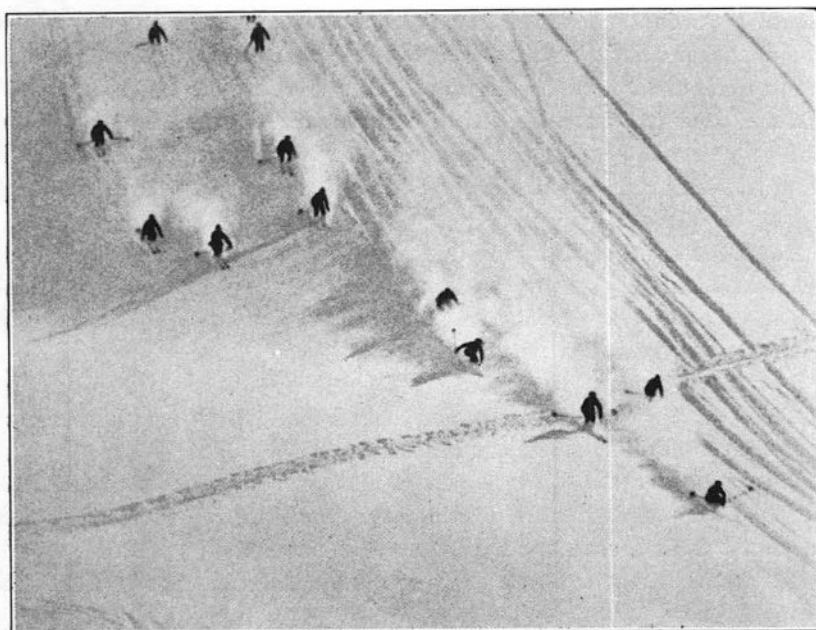
shirt or jersey, headgear and mitts cannot be included in weight of pack.

Packs will be inspected and weighed immediately before the start and immediately after the finish of the race.

Start. The three skiers in each patrol shall start together, leaving time to be taken when starting signal is given for first man of patrol to cross the line.

The starting order is to be determined by lot and the patrols are to leave at five-minute intervals.

Course. Each patrol is to be furnished with a map of the course with the route plainly shown. This map may be used as patrol compulsory equipment if so desired.



Courtesy of Gebr. Enoch Verlag, Hamburg

SHOOTING DOWN-HILL AT TERRIFIC SPEED—Notice the squatting and crouching positions of the bodies with poles held near the hips and slightly to the back on the sides.

Patrols are to be checked in the vicinity of Mirror Lake cabin.

Finish. The course must be covered wholly on skis and the three members of each patrol must finish with not more than two minutes elapsing between the arrival of the first and last member. Finishing time of patrol shall be that of last man crossing line.

Winner. The Ski Patrol Trophy is a challenge trophy to be competed for annually and won by the patrol having the shortest elapsed time for the course and complying with the above regulations. Names

of the winning members are to be engraved on the back of the trophy, and each member shall hold the trophy for one-third of the ensuing year.

Any year during which the race is not held, the trophy shall remain in possession of The Mountaineers. (Year to start May 1.)

Time of Race. It is suggested that the race shall be started early in the morning to allow for contingencies and as late in the season as snow conditions permit to allow for the maximum of daylight, more stable weather and better conditioned skiers.

Rules. Any dispute concerning the race shall be settled in accordance with the National Ski Federation's regulations governing the matter.

Ski Committee. The race is to be conducted under the auspices of the Ski Committee and any deviations from the above rules, which may be necessary because of unusual conditions, are to be made by the Ski Committee and to be construed as binding on that particular race only.

SKI-JUMPING TROPHY. Presented to the club by the Outdoor Store and accepted by the Ski Committee October 8, 1929, with the understanding that it is to remain a perpetual trophy for members of The Mountaineers and that it is to be the highest award given in ski-jumping by the club.

DOWN-HILL TROPHY. Presented to the club by W. J. Maxwell, October 14, 1929, and accepted by the Ski Committee. Open to club members.

The race is to be run at Meany Ski Hut. Purpose: to develop skill and speed in down-hill running.

SLALLAM TROPHY. Presented to the club by Robert Hayes, October 14, 1929, and accepted by the Ski Committee. Open to club members. Purpose: to develop proficiency in turns.

This imposing array of trophies (six new ones in two years) has merely kept pace with the development of skiing interest and skill in the club. Last season one-half the club's membership were on skis at least once as contrasted with the dozen or so enthusiasts when the first trophies were presented.

A TELEMARCK SWING-TURN — One foot is advanced and the ski edged on the inside, the weight of the body resting on both legs. The rear ski is flat and its point near the other foot. The weight is thrown to the inside of the turn to facilitate the swing. The arms should not be held as high as in the picture; the poles are swung out to the sides.



N. W. Grigg



Courtesy of Gebr. Enoch Verlag, Hamburg

SKATING—The entire weight rests on one leg at a time, the other ski being held up closely near the calf. The different stages of this mode of attaining greater speed on easy slopes can be studied. Notice also the correct position of the poles.

DRESS, EQUIPMENT AND WAXES

N. W. GRIGG

DRESS to keep us warm, dry and comfortable so that we may successfully combat the rigors of winter; equipment that is sturdy and strong, yet light in weight and still of proven practicability; waxes to make our skis glide with the swiftness of wind and yet enable us to ascend easily the slopes we have run down; the expert should be learned in these matters and it is to the beginner that we offer the following advice based on experience with the problems peculiar to skiers in this region.

CLOTHING. Protection for ourselves is of prime importance. Wool is the answer; it wears well and dries quickly. Underclothing should be of soft, lightweight wool. Full length suits are preferable. A two-piece suit affords the wearer greater freedom of movement. A sweater is almost a necessity to keep us warm when a stop for lunch or rest is made. Socks of wool, goat hair or camel hair are the best for wear and warmth. Two thin pairs are better than one thick pair. Remember to give the toes plenty of room to move about in. Cramped toes mean poor circulation and consequently cold or perhaps frozen feet.

Outer clothing should be of windproof nature. The cloth should have a smooth surface and be of a close weave; snow cannot cling to a smooth surface as easily as to a rough one. Cheviot, serge or

gaberdine are cloths which fill these requirements. The cut of the suit or garment is also important and should provide freedom of movement. That is why long Norwegian ski pants are best. They can be laced at the ankle or have elastic straps to go under the instep. A small puttee at the shoe tops adds a dash of color, besides helping to keep snow out of the boots. Knickers are preferable to breeches. The jacket or coat should have plenty of room in the shoulders. Pockets should button tightly. (Belted coats do not flap in the wind.)

A cap with a brim is the best headgear. Those with inside ear flaps serve a double purpose. Mitts are of vital importance. A wool mitt worn inside a wind-proof mitt is ideal. Carry a spare pair of wool mitts for a change and you will always have warm, dry hands. Outer mitts should have long gauntlets that can be drawn tight by a strap of some sort. Outer mitts should be of the thumb and palm type.

Boots. Ski boots are almost indispensable to good skiing because of several unique features which enable them to serve the purposes for which they are intended. Soles should be rather thick, sides should be straight (this does not mean parallel). The toes should be square, the heels shallow and concave. The soles should extend beyond the uppers in front of the instep. Shoes should be made of the best leather and should be treated with a good waterproof dressing. Metal sole guards prevent wear at points where the sole is in contact with the bindings.

BINDINGS. Gresvig, Haug or Huitfeldt are the bindings most popular with skiers of this club. These bindings are of proven quality and durability. However, there are many other bindings that would serve just as well. The Gresvig and Haug are of the screw-on type; they have no toe straps. Both are adjustable to the width of the shoes. The Haug can be adjusted for sole thickness also. Genuine Huitfeldt bindings with one-piece toe irons are the best of this type. If you intend to use a Huitfeldt, be sure to order your skis with a mortise. Leather fittings should be first-class. Metal heel straps have more leverage and are less liable to wear out. Bindings can give more trouble than anything else, so give them plenty of attention.

SKIS. Touring skis only will be discussed in this article. Hickory is the best material used for skis. It is strong and supple and does not split easily. Hickory does not absorb moisture as most other woods do. Ash is the best substitute for hickory. Maple and birch are also used. By all means do not bother with pine skis; you will waste your money. The skis should be rather broad and made after the Telemark model. They can be flat or have ridge tops. As to length, the following rule is about right. One should be able to grasp the tip of the ski with the whole hand when the skis and person are in a vertical position. For a person of average height seven-foot skis are about right. Touring skis have only one groove. A large, heavy skier must have a stronger ski

with greater bearing surface, longer and broader. Skis should satisfy the following: Have—

1. Good material, which has been dried slowly.
2. The grain not running to the front or to the sides so that it splinters with use; preferably knotless, in any case no knots in lower part of bend.
3. The bend long and easy, not abrupt.
4. The bend and front part of the ski go into each other in an even elastic line.
5. Side lines having the same curve.
6. A suitable arch in center.
7. The greatest thickness at the back edge of the harness mortise.

Skis should be impregnated by the maker with a tar or a mixture so as to harden and preserve the wood. The tops should be painted, lacquered, oiled or waxed.



Courtesy of Gebr. Enoch Verlag, Hamburg

STEMMING—This is a down-hill turn. It starts from the snow-plow position, most of the weight of the body being placed on the outer leg, the inner leg being left in the plow-position. The body is bent forward and the poles are held in the correct position near the hips and to the side, easily dragging on the snow to be ready for emergency use.

When buying skis the buyer should :

1. Choose hickory or ash.
2. Determine height and weight.

3. Examine the bend's shape, lines and elasticity.
4. Determine the center of gravity of each ski and see that they are alike.
5. Examine arch, its height, form and length.
6. Sight along ski to examine groove and side lines.
7. By sighting along the bottom surface determine that the ski has not been warped.
8. Determine that there are no more or less hidden weak spots especially in the bend and front of the ski, no grain running wrong.
9. See that the back cross edge is not too thin.
10. See that the ski is well impregnated.

Every skier should have two ski poles. They should be long, preferably up to the shoulders. Many materials are used: bamboo, duralumin, hazel or pepper cane. The poles should have broad leather hand-loops. The tops may have knobs of cork, leather or rubber. Snow rings should be large and fastened to the poles with leather loops, riveted in place.

GLASSES. Snow glasses are indispensable. If possible get celluloid goggles that completely cover the eyes, in amber or reddish yellow. Their purpose is to shield the eyes from the ultra violet rays and also from glare. Never start on a trip without your snow glasses.

OTHER EQUIPMENT. The following is a list of equipment with a word as to the uses of each:

Sole Plates—Prevent boots from scratching tops of skis. Keep snow from sticking under foot. Made of linoleum, metal, rubber or celluloid.

Mending Kit—With thongs, straps, wire, etc., and tools.

Spare Ski Tip—Enables one to return home in comfort if a broken ski tip is lost. One or two to a party is sufficient.

Sealskins—Make climbing a pleasure.

Flash or Candle Bug—In case you choose to travel at night.

Compass—One guess.

Rucksack—To carry lunch, sweater, spare mitts, etc. The sack should have a waist strap to help keep it in place. Bergans type is excellent.

Waxing Iron—Uses Meta fuel and enables one to wax skis while en tour.

Stoves and Meta—Small, folding kerosene stoves to heat food and drink while on a trip. Meta is a solidified fuel.

Shovel—For digging out a hole to spend the night or to dig a comrade out of an avalanche.

Crampons—As a climbing aid on ascents of mountains.

Besides this list there are many other items of use to a skier: first aid kit, bandana, thermos bottle, avalanche cords, rope, et al.



Courtesy of Gebr. Enoch Verlag, Hamburg

A CHRISTIANIA SWING-TURN at high speed near the Monte Rosa. Both skis are edged on the inside of the turn, the knees are slightly bent, the weight resting on the heels and the back-end of the skis. The upper part of the body is bent off in the hips as if intending to sit down on something to the right rear. A very easy and sudden turn can be executed by the correct placing of one's weight.

Wax. A blessing and a curse: a blessing if it works and a curse if it does not. Skis are waxed to make them run faster. A well-oiled ski will glide over the snow, but not fast enough for most skiers. Snow can be wet or dry, light or heavy, and it can be cloggy. To command a constant speed, skis must be waxed to counteract the effects of different kinds of snow. Heat is almost a necessity to properly wax skis. A cork for rubbing the wax is better than the palm of the hand. Except for some conditions the wax should be evenly spread and rubbed over the running surfaces of the skis. A scraper is a handy tool for removing old wax or hard snow.

Powder snow and new snow at temperatures below freezing—Mix (Ostbye), beeswax or paraffin are the best. Mix is a good climbing wax. Any of these is a good running wax on any, except wet, snow.

Sticky or cloggy snow. New snow at temperatures above freezing—Medium (Ostbye), beeswax, paraffin, Strand or Northland. This condition is very hard to wax for, since the temperature is very unstable as a rule.

Wet snow; when it is raining or the surface melts from the heat of the sun—Klister (Ostbye) is about the only answer. The tar should

be spread evenly on the skis. Jordells put on in a lumpy, uneven manner is sometimes good. Use kerosene or any similar solvent to remove the Klister.

Crusted or frozen snow—No wax is necessary to make the skis go fast. Crust scrapes and cuts a wax. Skare (Ostbye) is one answer for this condition.

There is no universal wax. Many such claims are made and while the wax may be useful we have yet to find proof of such claims. Very little is known about waxing while still less has been written about the subject. Experiment and maybe you can help others besides yourself.

Waxes can be used singly or in combination with other waxes. Mix thinly spread over a coating of Klister is an example. This is good for cloggy, semi-wet snow. You can have different waxes on different parts of our skis. Medium in front and rear, with Klister in the middle. Kerosene has been used. The ancients used dried fish, so we can do no less than try anything. If in doubt ask some one who has skied a great deal. Intimate knowledge of prevailing conditions is necessary before one can prescribe.

The Ski Committee is at all times only too glad to help any skier with advice and suggestions. For those who desire to delve farther into the subject, the following chapters in well-known ski books are recommended for study:

Modern Skiing, A. H. d'Egville, Chapters I, XXVI.

Ski-Running, Katherine Furse, pages 23 to 51.

Ski-ing for Beginners, Arnold Lunn, Chapter I.

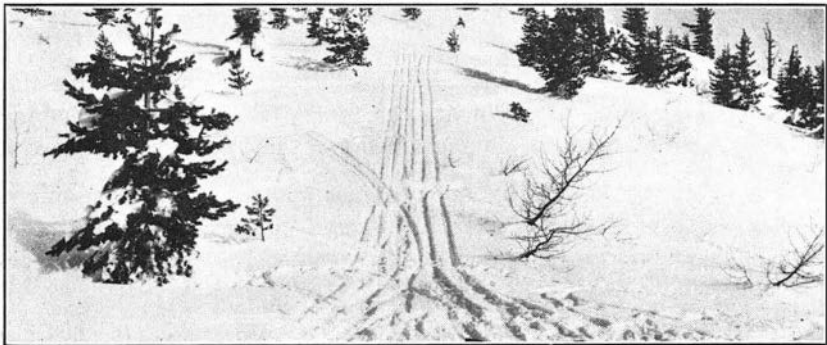
Alpine Ski-ing at All Heights and Seasons, Arnold Lunn, Chapter I.

Snow and Ice Sports, Elon Jessup, Chapter II.

Skiing, Ornulf Poulsen, Chapter IX.

The Book of Winter Sports, W. Dustin White, Chapter V.

All these are in the Club library.



NEAR MEANY SKI HUT

A. H. Hudson



MEANY SKI HUT

A. H. Hudson

EARLY IMPRESSIONS

HERMIA THOMSON

IT is Indian Summer, and a certain crispness in the atmosphere—a tang in the morning air or a tinge of frost in the moon—touches some responsive chord within that crystallizes vague anticipation of approaching glorious days in the snow. How easy, upon closing my eyes, to imagine myself with ski-poles in my hands and a pair of willing servants beneath my feet, on the white mantled slope of a moon-swept hill, trees in a dark line behind, before, the far-flung mystery of winter mountains.

The scene changes, I think of a glowing fireplace in a big friendly log room, snow piled against the windows, a line of mittens and caps steaming under the mantel, skis warming before the stove, the hearty companionship of many friends making an atmosphere unique in its genuine friendliness and common enthusiasm.

In this reflective mood I take down ski-poles to make sure that their shafts are intact and rawhide sound, and I pass a reminiscent hand down the smooth surface of each faithful ski. I catch a faint odor clinging to sundry accessories strongly suggestive of Hopskivoks and Klisters. The glimpse of a small label "made in Norway" sets my blood tingling with treasured memories of the past winter's joys and shadowy visions of what lies waiting after the passing of a few autumn weeks.

To one who has never become acquainted with the exhilarating pleasures that skiing affords, there is a decided mixture of feelings the first time he buckles a pair of the slippery boards on his feet, gives

(Editor's Note—Miss Thomson won the Women's Skiing Trophy in 1929 after less than one season's experience.)

his cap a final tug, and grasps a ski-pole in either hand. Drawing a long breath, he heads for the pitfalls which, though invisible as yet, he knows exist in the long, white slope before him. Perhaps foremost in his immediate emotions is the antipathy he feels for a fall. He cannot do himself a physical injury on a gentle slope in six feet of soft, yielding snow, but there is something that causes a disrelish for a complete upset of equilibrium. Every time one falls, he must collect poles and wits, and compose his apparel and his spirit before regaining the balance of body and mind indispensable to a vertical skiing posture. Before he has made many descents the novice learns that he is helpless, hopelessly inadequate, and entirely unequal to the situation at hand when he has fallen with his head abruptly downhill in spread-eagle attitude, his hands unable to find any solid foundation, and his feet despairingly treading powdery snow.

However, this aversion to tumbles is a transient emotion. When experience has taught that a body which is momentarily out of control, if relaxed and loose-jointed, can bring nothing further than a temporary respite from smooth glissades, and a great clacking of skis and poles, with its consequent audience of invariably interested onlookers, he ceases to have apprehensions of falling and becomes occupied with the business of surmounting the obstacles in his path.

There is variation in the ability of neophyte skiers. Some, to judge from the speed with which they adapt themselves to the intricacies of the art, would seem to have a little Scandinavian blood in their veins, and to these the dream of exhilarating descents and delicate maneuvers soon become a working reality; but others to whom adaption to a new sport is not so rapid, merely need a longer period of endeavor. And perhaps these last are to be envied, too, for theirs is the eager and whole-hearted fun of learning.

Once a person has gained the first slight mastery of the thrilling art, what is it that causes him to fall so deeply in love with skiing that he is its slave thenceforth? Is it that its perfection is some elusive will o' the wisp that calls and beckons one, leading him on, over rough places and hardships of which he is but dimly aware? Or is it that after one has a taste of the exhilarating sport with its accompaniments of glorious companionship and the mountains' mid-winter beauty he can find no substitute but what seems dull and prosaic? Whether it be one of these reasons or an intangible something that evades expression, it remains that the skier will follow the snow higher and farther into the hills as it recedes in the spring, and in the fall will welcome the first opportunity to dig out the square-toed boots and to put a coat of wax on beloved skis.

Skiing is appealing alike to man and woman, to the adept and the inexperienced. And not only to the expert are the tangible rewards

due. Trophies are awarded to winners in skill and endurance, and occasionally it is the person who in the early winter made his first long-remembered glissade who will in the spring glide down the trail with a silver cup stowed away in his pack. It has been done, and it will be done again. It needs no urging for the lover of snow to buckle on a pair of skis and to fare forth to the upper slopes where every angle is rounded and every rough contour softened by a covering of virginal beauty.

Skaal to the ski! May it stand as a symbol of man's love of Nature's handiwork and a whole-hearted enthusiasm for an inspiring and exalting activity.

Skaal!



SNOQUALMIE LODGE AT NIGHT

R. F. ELLIS

SKIS TRIUMPHANT

A Story That Could Be True

W. J. MAXWELL

THE dinner dishes had been washed at Snoqualmie Lodge and a contented group were lazily seated in front of the high fireplace, grateful for the warmth of its blazing logs. The time was late in January. Outside, the full moon and millions of sparkling stars looked down upon a scene of winter grandeur. The bushes and small trees, protruding through several feet of snow, were resplendent with the delicate tracery of countless shining frost particles, glowing and sparkling, as a breeze from the mountains gently moved them. A few hardy skiers practiced turns on the nearby slopes, but soon even these were attracted to the warmth inside.

From the phonograph in the corner came a cheery yodeling song. Good natured quips of friendly bandinage enlivened the conversation among these friends of the high mountain trails. Friends, indeed! Friends of storm and hardship, of calm and contentment; their friendship born amidst the grandeur and isolation of nature's rugged crags.

To Jim Connor had come a new experience. Hunting and fishing

were to him an open book. But the vastness of the great forest in its winter solitude, the immensity of it, appealed in a new way to his spirit of adventure. Tomorrow, for the first time, he was to don skis. His thoughts went forward in contemplation to the time when he should have mastered the art, when his skis should respond to his every wish. His flight of fancy took him to the top of the neighboring mountain; he visualized himself rushing with glad abandon down the steep slopes; here checking himself with one of the graceful turns he had observed while watching the experts; and then on a steeper slope, swooping boldly toward some obstacle, a group of trees, or a precipitous gully, his friends watching to see if he came to grief, boldly swinging his skis and turning to safer paths. Yes, he must master this art. He would gain the required knowledge and skill.

Some two years later, on an early Sunday morning, Jim, with a few members of the club, left the lodge. Soon, after skiing along the Silver Peak trail, and crossing the upper Olalee meadows, they were traversing under the cliffs of Tinkham peak. The snow was dry and powdery, the air crisp and cool. Suddenly, from high above Mount Catherine, the noise of an airplane motor drew their attention.

"I don't like the sound of that motor. That fellow is in trouble," declared Jim Connor.

"I say! He is making a forced landing," was the response. "Why, he is heading toward us. Why doesn't he make for Lake Keechelus? That would be his best landing place."

"The wind is the wrong way to reach Keechelus. Looks like his only chance is to reach Mirror lake. If not, he is sure to crack up. By Jove! he is coming down fast."

Only an occasional sputter came from the airplane as it coasted with the wind toward Tinkham peak. Suddenly, striking an air current, it fell abruptly for over a hundred feet, and then recovered with just enough clearance to skim over the trees on Tinkham divide.

"Let's go," called Jim, shoving his poles into the snow as he raced up the slope. "That pilot may need help, if we're not too late."

Each man put every ounce of energy to increasing his speed as he climbed upward and visioned the scene just beyond the ridge: either a white-winged miracle poised amid snowy peaks, safely landed on blanketed Mirror lake, or the broken fragments of human life and machinery whose limitations, tempting the elements, had found destructive contact with the hillside.

Upon reaching the top of the divide, Connor, in his anxiety to be of service to the aviator, gave an exhibition of his marvelous dexterity on skis. The slope was steep and covered with trees. To the average skier such a place would demand the utmost caution, but to Jim the element of haste but added to a supreme exhibition of his skill. Rush-

ing with tremendous speed until blocked by some obstacle, he would check his speed with an uphill Christiania, and then immediately do a downhill lifted stem and start downward in the opposite direction, as it would have been suicide to run straight down that hill. Then another turn cleverly executed and he was back, running in the other direction. Suddenly a small log loomed ahead, directly in his path. To strike it would probably break a ski. Thrusting his poles boldly in the snow, and rising from a bent knee position, he made a Gelaende-sprung over the log to safety. A small gulch cut across his path. It looked like disaster for him, but again his skill saved him. Pushing his left ski backward, with most of his weight on his right ski as it entered the gulch, he executed a very clever Telemark. Then, running down the gulch for a short distance and swinging across onto the farther slope, with a short run, he came in view of the lake. Before him he saw a flash of flame and a small cloud of smoke. There was the airplane, badly crushed and burning.

Working together the men put out the fire with snow, saving the mail sacks from what proved to be a government plane.

"But where can the pilot be?" queried one, voicing the thought of the bunch.

"He must have jumped after he crossed the ridge," said Jim. "Let each man search an area thoroughly. Look up in the trees. His parachute may have tangled in the branches. If you find him safe, blow your whistle three times; if he is injured, use the international signal of six blasts per minute."

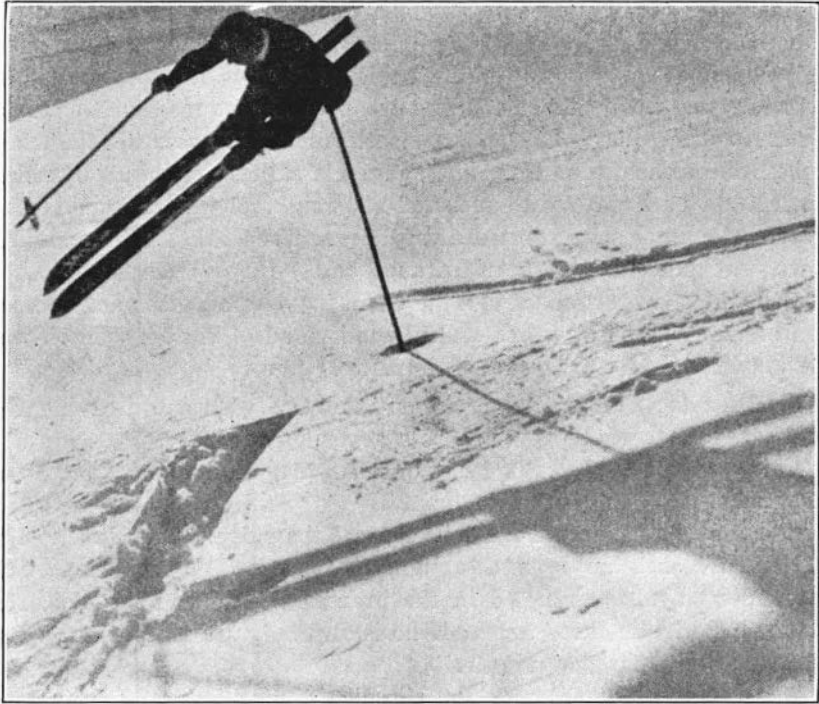
A few minutes later came the signal of six whistles. Jim Connor had located the aviator. The torn remnants of his parachute hung draped from the limb of a tree; a deep hole in the snow showed where he had fallen. The softness of the snow had broken the force of his fall, but undoubtedly he would have frozen but for Jim who was digging strenuously to reach him.

"He seems to have broken an arm where he struck the branch," he called. "I think he is just coming to. Cut some of those ropes from the parachute; we'll need them to haul him out."

After building a fire Jim assumed leadership, making the rescued man as comfortable as possible.

"Boys, we have two things to do quickly. One is to get this man to the Milwaukee railroad, and the other is to rush the mail on ahead. We will make a sled out of the remains of the plane to haul him. It is mostly down hill for eight miles, with a drop of fifteen hundred feet in that distance. Four of us can take the mail in our packs. With good luck, we can ski down in two hours to the shelter hut at Keechelus. From there we can phone to Hyak, and probably get a speeder or a helper engine to take the mail to Easton. As I know the way, I think I had better go ahead with the first party. We will return to Lost lake

with food and lights to help you. Use some of these ropes to make roughlocks for your skis so that you will be able to check the speed of the sled. The poor fellow's had it tough enough already."



Courtesy of Gebr. Enoch Verlag, Hamburg

A JUMP TURN—Coming from the right rear, the skier puts his left pole down near the point of his left ski, at the same instant jumping up and around it. His body rests on the left pole. His hips and knees are bent in preparation for the shock of the landing. His skis are parallel (also notice the shadow) to enable him to start gliding in the desired new direction immediately upon landing, which in this picture will be to the left rear as indicated by the tracks of previous similar jump-turns.

The first squad started away at fast speed. After a series of thrilling rides, they made the steep descent to Lost lake, crossed the snow-covered lake and took the short run of two hours to the shelter hut. From there the news was flashed along the line.

Before long, Connor's party was on its way back toward the upper end of Lost lake. Someone suggested, "I think two of us had better build a huge fire so that the others can see where we are. It is nearly dark and nothing will cheer them up more than a fire and something warm to eat. They should be within a couple of miles of us if they have had any luck at all."

"That is a good idea," responded Connor. "Tom and I will go on with lanterns. Make lots of tea and soup. Good-bye!"

Meanwhile, the sled party had watched those skiing down the steep

slopes with just a touch of envy. Such wonderful hills and they must plod along, step by step, now pulling on the sled occasionally, but more often using all their strength to hold back. They could not safely traverse the hill with the sled. It was better to head straight down hill,



Courtesy of Gebr. Enoch Verlag, Hamburg

A GELAENDE-SPRUNG, which means a sudden jump with the use of the poles over some obstacle, the legs being pulled up to give more clearance. The body is bent forward and the poles are held back.

and brake the speed as best they might. The work was tiresome. Sometimes only a quick pull on the ropes would prevent an upset. Even then it seemed that the first five hours were the easier, for when they reached flatter country the level snow made it more difficult to pull the sled. Rests became more frequent. They began to feel discouraged at the thought of the grind ahead of them. At first they were hungry, craving hot food, but gradually came that most dreaded feeling of intense desire for sleep. Each with lowered head, intent on the path, was startled as the drugged silence was broken by the cry, "I see a light. Hurrah! there is a light. It must be help. Hello! Hello!"

"Coo-coo! Coo-coo!" came the answer, and then came a long drawn-out yodeling call.

"That is Jim's yodel. No other human being can make a sound like that. And Tom is with him. I would recognize that 'coo-coo' call of his anywhere."

Extra strength and renewed energy came to the tired men.

"The boys will have some hot soup and tea for us by the time we get there. We have a blanket and we can rest by the fire for a few hours," Jim told them as he came up.

After another half hour of struggle, they reached the fire. The night was cold and the wind blew viciously from over the expanse of the lake. About two hours before dawn snow began to fall heavily.

Rested, they started again, making good progress as now they could alternate to relieve one another. After a few moments, a heavy fog set in. The visibility was so poor that they lost sight of the trees along the edge of the lake. Half an hour later they came upon the tracks they had recently made. In the fog they had described a circle. It was evident the injured man was suffering intensely. The shock of his fall and the night of exposure had told heavily on him. Sudden chills affected him. It was imperative to get him to shelter and medical aid before long.

"I'll try for an echo from the surrounding mountains. Maybe we can get our bearings that way," said Jim.

"Calling as loudly as possible, "Hello! Hello!" he heard a faint response echoing from the hill on their left. Proceeding more in that direction, they traveled on, occasionally getting an echo from the hill on their right. Suddenly, wafted by a gust of wind from the east, came faintly the sound of three whistles, repeated frequently.

"Luck is with us," shouted Jim, who had been breaking trail slightly in advance of the sled. "Help is coming!"

The sound of the whistles grew clearer, and soon emerging from the fog came a group of fellow Mountaineer skiers. Just as they had retired for the night at Meany Ski Hut, one of the operators from the depot had brought them the news which he had just received of the wreck of the mail plane, the news that had been carried by Jim's party to Keechelus Station. Hastily getting their equipment together, they had skied down to the Milwaukee tracks, thence to Keechelus Station, and up through the woods two miles to the east end of Lost lake. From there they had had to proceed very slowly and cautiously, for, in the fog and vast solitude, it would be very easy for one party to pass the other.

Now that the new crew of men relieved the weary ones of their labor, the party moved rapidly forward to the end of the lake, followed the general course of Roaring creek, and proceeded down hill to Keechelus.

With haggard faces and weary stride, showing the evidence of their hard struggle the small group of Mountaineers led by Jim Connor boarded the train with the pilot they had rescued. Skiing skill had triumphed!

DEPARTMENT OF THE INTERIOR
WASHINGTON, D. C.

Released for the Press, July 24, 1929



THE first citation for heroism ever issued by the Department of the Interior was made today by Secretary Wilbur in the case of Park Ranger Charles B. Browne of the Mount Rainier National Park, in connection with his rescue work and recovery of bodies early in July when a party of mountain climbers fell into a crevasse at high altitude.

“The party, consisting of six members,” says Secretary Wilbur in his citation, “while returning from the summit in adverse weather and fog conditions, fell into a crevasse with resulting injury to four and death to two. One member of the party succeeded in reaching Camp Muir, where Ranger Browne was on a fire-lookout duty. Ranger Browne at once sent for assistance and, though improperly shod and without equipment for ice work, proceeded to the scene of the accident.

“He was directly responsible for saving the life of one member of the party by assisting him to a point where he could proceed to Camp Muir alone. Two other members succeeded in making their way to Camp Muir. Ranger Browne, without assistance, and in the face of a raging blizzard, returned to search for the two missing members.

“After two hours of the most difficult and dangerous ice work, he found one of them, who was unconscious and apparently dying and from whom nearly all clothing had been torn. Ranger Browne made several attempts to carry this injured man up the steep ice slope but failed. Before leaving him to go for help he took precautions to keep him from further injury and to make him as comfortable as possible. A rescue party later found the dead body of this mountain climber.

“On the morning of July 7, Ranger Browne, as the head of a rescue party organized to search for the sixth member, and after arrival at the scene of the accident, refused to allow other members of the party to make the perilous descent into the crevasse. He was lowered to the ledge below by rope. He found the sixth member of the party dead and frozen, and after chopping the ice from the body attached a rope to it and it was raised to the top of the crevasse.

“In performing the extremely hazardous duty described above, which was done at the risk of his own life, and in leading the rescue party, Ranger Browne displayed great courage, endurance and resourcefulness.”

THE 1930 OUTING

Where and When?

THE 1930 Outing will be around Mount Rainier, three full weeks during the last of July and the first of August. Circumnavigating the mountain on foot by way of trails or over glaciers at high elevations is a journey which will linger long in memory.

The mountain meadows, the glaciers, the streams and waterfalls, the lesser peaks, but above all the Mountain, dominant, awesome, majestic; the days on the trail, the campfires at night, the colorful company; the friendships; these and more are what the outing will give to you who elect to join it.

The trip will start on the south side of the mountain. The first camp will be in Van Trump Park, then Indian Henry's Hunting Ground, Klapatche, Sunset, Spray, Moraine, Yakima, Summerland, Ohanape-cosh, with the last at Paradise Valley.

The route will be by trail, or trail and glacier, according to your choice. Camps will be located so as to make the trip between them enjoyable. Some of them will be for one day, others for several, depending upon the things to be seen and done from the camp.

The ascent of the mountain will be on the north side, with bivouac at Camp Curtis the night before the climb.

Full details of the outing will appear in the Prospectus to be issued in the spring.

L. A. NELSON, *Chairman.*

 BOOK REVIEW


IN this annual there are published a number of skiing pictures for the purpose of instruction and demonstration. They are reproduced with the special permission of the Gebrueder Enoch Verlag, publishers in Hamburg, Germany, from their splendid book "The Wonder of the Ski," a standard-work of the ski-sport written by Arnold Fanck and Hannes Schneider, two of the most outstanding figures in this field who are already well known to mountaineers from the ski-films repeatedly shown at our meetings.

This book, as a textbook, is unique from the standpoint of the skier as well as from that of photography. There are 242 excellent and well arranged single pictures and 126 moving pictures series with 1100 pictures. The text in the German language treats on the technique of Alpine skiing and the famous Arlberg system developed by Hannes Schneider. A number of Mountaineers already possess this valuable book and they claim that the photographs alone give such a clear and impressive idea of the correct way of cross-country skiing, that no text explanations are actually needed.

H. O. Giese.

REGULAR MONTHLY MEETINGS

December, 1928, to November, 1929

Chamber of Commerce unless otherwise stated

- December 7, 1928—Scenic Splendors of the Canadian Rockies. Moving pictures.
- January 4, 1929—Exhibition of Natural Color Photography; Flowers, Gardens, Parks. Mr. Louis F. Murdock.
- February 8, 1929—Annual Birthday Dinner, Gowman Hotel. President Edmond S. Meany, Toastmaster.
- March 8, 1929—Zuni Indians. History, Life, Tribal Melodies, Incantations. Miss Bessie Lathrop Edmunds assisted by Jack Mage, Sally Scicade, and Master Bate.
- April 12, 1929—Moving pictures of Canadian Mountain Scenery and Wild Life. Lecture by Mr. J. C. Campbell, of Ottawa, Director of Publicity, Canadian National Parks.
- May 10, 1929—The Conquest of the Yukon. Illustrated by slides made from pictures taken during the gold rush of 1897-1898. Lecture by Mr. A. J. Goddard.
- June, July, August—No meetings.
- September 6, 1929—The Climbing of Mount St. Elias. Lecture by Honorable Ralph D. Nichols, former State Senator and Seattle Councilman.
- October 4, 1929—Summer Outing with the Sierra Club, 1929. Address by Miss Lullie Nettleton.
- November 8, 1929—Transcontinental Air Mail Route from Oakland to Chicago. Illustrated lecture by Mr. Fred Laudan, factory superintendent of the Boeing Airplane Company.

GERTRUDE INEZ STREATOR, Historian.

SUMMARY OF SEATTLE LOCAL WALKS

October 31, 1928, to October 31, 1929

Walk	Date	Dis- tance	Route—	Leader—	Attend- ance	Cost
563	Nov. 17	7	Virginia-Brownsville	E. A. Harpur.....	55	\$.90
564	Dec. 2	8	Airel-Curtis	T. D. Everts.....	65	.65
565	Dec. 16	7	Vicinity of Kitsap Cabin..... (Xmas Greens Walk)	P. M. McGregor.....	48	.90
566	Dec. 23	7	Perwhing-Esperance	L. W. Committee.....	14	.70
567	Jan. 6	8	Egdon-Kingston	Ellen Willis and Matha Irick	37	.85
568	Jan. 20	9	Renton and Maple Valley.....	Frank Stannard	33	.60
569	Feb. 3	6	Esperance-Seattle Heights.....	Fred Ball	9	.85
570	Feb. 17	6	Suquamish-Liberty Bay	May Rosenberg	21	.80
571	Mar. 3	7	Keyport-Gilberton	Louis Nash	26	.90
572	Mar. 17	6	Hanville-Hoods Canal	Harold Mayer	107	.90
573	Mar. 31	26	Seattle-Everett	L. W. Committee and Paul Gaskill	13	.88
574	Mar. 31	5	Vicinity of Illahee.....	Louis Nash	20	.80
575	April 7	7	Enumclaw-Baldy Mountain (Joint with Tacoma)	Clarence Garner	62	1.70
576	Apr. 21	18	Harper-Gig Harbor	Elsie Claussen and Norval Grigg	27	1.05
	Apr. 21	5	Vicinity of Harper.....	23	.80
577	May 5	7	Tacoma Flower Walk near Lake Spanaway	Florence Dodge	70	1.70
578	May 26	7	Vicinity of Kitsap Cabin..... (Rhody Walk)	Patience Paschall	55	.90
579	June 2	7	Gibson-Hawley	Edna Wanamaker	23	.80
580	June 16	6	Vicinity of Lake Morton.....	R. A. Church.....	26	1.50
581	June 30	10	Scandia-Hoods Canal	G. Wendell Young.....	45	1.00
582	Sept. 8	12	Erland-Charleston	A. H. Hudson.....	25	1.02
583	Sept. 22	7	Newellhurst-Kingston	L. W. Committee.....	19	.80
584	Oct. 19	6	Vicinity of Lake Morton.....	R. A. Church.....	51	1.50

Total Attendance904 Average Distance8½ miles
Average Attendance 39 Average Cost98 cents

Twelve Wednesday Evening Beach Fires at West Point, on Fort Lawton Military Reservation. Total Attendance—710. Average Attendance—59.

RECORD OF TROPHIES

Acheson Cup.....	Charles B. Browne, Tacoma
Harper Cup.....	Otto P. Strizek, Seattle
Women's Skiing Trophy.....	Hermia Thomson, Ellensburg
Meany Ski Hut Trophy.....	Hans-Otto Giese, Seattle
Meany Ski Hut Trophy.....	Ellen Willis, Seattle

REPORT OF CLUB ROOM COMMITTEE

NOVEMBER, 1928—NOVEMBER, 1929

During this year thirty-four meetings were held, with an average attendance of thirty-four. Talks and entertainments were as follows: Dramatic Program, Margaret Akin; "Game Laws of Washington," Mr. Beach, Game Warden of King County; "Ants," Professor Trevor Kincaid, University of Washington; Christmas Play, West Seattle High School students; Aviation Talk; "From Cairo to the Cape," Winona Bailey; Bridge Party; Boy Scout Demonstration; "From Giant's Causeway of Ireland to the Black Forest of Germany," Harriet Geithmann; Talk on New Zealand; Illustrated Talk on Climbs of Mount Shasta and Mount Lassen, H. W. Playter; Programs in charge of Individuals and Various Committees; Summer Outing Pictures.

Total Receipts	\$61.91
Total Disbursements	39.65

Balance on hand (deposited in National Bank of Commerce).....	\$22.26
---	---------

DORIS M. SUNDLING, Chairman.

THE MOUNTAINEERS—TACOMA BRANCH

TREASURER'S ANNUAL REPORT

As of October 15, 1929

RECEIPTS:

Bank Balance, Nov. 1, 1928.....	\$ 436.51	
Special Outings, 1927-28, Surplus.....	79.75	
Annual Dinner 1928, Surplus.....	3.80	
Winter Outing 1928-29, Surplus.....	34.36	
Membership Refund	199.00	
Interest on Investments.....	126.00	
Revenue from Card Parties.....	41.70	
Rent of Equipment.....	5.50	
Sale of Mountaineer Song Books.....	4.00	
Sale of Club Room Keys.....	3.00	
		\$ 933.62

DISBURSEMENTS:

Rent of Club Room.....	\$ 264.00	
Furnishing for Club Room.....	22.62	
Irish Cabin—Advanced for Wood.....	\$76.50	
Less Surplus 1928-29.....	28.69	
		47.81
Meany Ski Hut.....		40.00
Local Walks—Special Outings Advance.....	15.00	
Less Surplus 1928-29.....	6.40	
		8.60
Entertainment Committee Advance.....	24.43	
Less Surplus 1928-29.....	9.45	
		15.38
Seattle Trustee Travelling Expense.....		19.20
Mimeographing		22.35
Postage		24.47
Secretary Sundries		7.30
Flower		19.40
Safe Deposit for Securities.....		5.25
		\$ 496.38

BALANCE IN BANK OF CALIFORNIA..... \$ 437.24

ASSETS: CHRISTINE HERMANS, Secretary-Treasurer.

Cash in Bank of California.....	\$ 437.24	
(1) Investment Bonds (Par):		
Mountain States Power Co.....	\$1,000.00	
United Public Service Co.....	1,000.00	
United Public Utilities Co.....	100.00	
		2,100.00
Receivable:		
Bond Interest Accrued.....	20.25	
Membership Refund (Est.).....	190.00	
Special Outings Committee.....	16.43	
		226.68
(2) Furniture, Fixtures and Supplies:		
Irish Cabin	\$5.00	
Club Room	160.00	
		245.00
Rent Paid in Advance.....		11.00
		\$3,019.92

LIABILITIES:

Payable to Amos Hand for Trustee Expenses.....	\$ 8.75
--	---------

NET WORTH\$3,011.17

NOTE:

- (1) Includes Permanent Cabin Fund of \$340.09.
- (2) Depreciated.

CHRISTINE HERMANS, Secretary-Treasurer.

THE MOUNTAINEERS—SEATTLE
TREASURER'S REPORT

For the year ending October 31, 1929

RECEIPTS:

Cash in Bank.....	\$ 446.56
Annual.....	251.40
Bulletin.....	70.70
Withdrawn from Puget Sound Savings & Loan Assn.....	1,045.00
Interest.....	325.00
Dues: Seattle.....	2,977.50
Tacoma.....	439.00
Everett.....	236.00
Initiations.....	267.50
Interest Seymour Bond.....	60.00
Accounts Receivable.....	43.50
Six Peak Pins.....	6.00
Snoqualmie Lodge return 1928.....	.13
Stationery Sales.....	9.16
Summer Outing.....	560.34
Local Walks return 1928.....	105.37
Kitsap Cabin return 1928.....	48.44
Special Outings return 1928.....	113.94
Membership Committee return 1928.....	2.45
N. S. F.....	32.50
Meany Ski Hut (petty cash) 1928.....	48.35
Donations (Tacoma) for Meany Ski Hut.....	40.00
Donations (Mrs. Costello) for Meany Ski Hut.....	5.00
Donations (Tacoma) Reserve Fund.....	49.46
Meany Ski Hut Operating.....	526.03
Summer Outing 1928.....	8.45
Special Outings return 1929.....	168.72
Tacoma Dues refund.....	199.00
Library Fund.....	2.00
Membership Committee return 1929.....	2.90

\$8,080.40

DISBURSEMENTS:

Annual.....	\$ 873.19
Bulletin.....	678.09
Rentals.....	686.00
Printing, Postage and Stationery.....	133.50
Financial Secretary's Salary.....	180.00
Bills Payable.....	301.41
Deposit, Puget Sound Savings and Loan.....	400.00
Expense, Miscellaneous.....	35.41
Summer Outing 1929.....	244.25
Associated Outdoor Clubs of America, Dues.....	15.00
Meany Ski Hut Operating.....	299.69
Interest Seymour Bond.....	60.00
Insurance.....	88.20
Premium, Protection Bonds.....	275.00
Auditor.....	50.00
Local Walks return 1929.....	30.00
Snoqualmie Lodge.....	845.52
Reserve Fund.....	374.46
Entertainment Expense.....	59.51
Kitsap Cabin.....	200.00
N. S. F.....	32.50
Club Room.....	41.35
Library Books.....	78.00
Refund Tacoma Dues.....	199.00
Meany Ski Hut Permanent Construction.....	477.60
Meany Ski Hut Loan 1930.....	100.00
Refund Tacoma Dues.....	175.00
Refund Everett Dues.....	59.00

\$6,991.68

1,088.72

\$8,080.40

H. WILFORD PLAYTER, Treasurer.

Profit and Loss Account for the Year Ending October 31, 1929

DR.*

Club Room.....	\$ 19.09
Entertainment.....	59.51
Expense General.....	150.26
Insurance.....	169.41
Kitsap Cabin Operations.....	85.16
Printing and Stationery.....	123.72
Rentals.....	686.00
Snoqualmie Lodge Oper.....	884.85
Salary.....	180.00
Profit for year.....	\$2,358.00
	1,048.77

\$3,406.77

* The Debit indicates the actual loss and the Credit the actual profit of any club activity.

CR.

Annual Magazine	\$ 294.11
Bulletin	3 81
Dues, Seattle	1,741.50
Dues, Tacoma	90.00
Dues, Everett	59.00
Donations	49.46
Initiation Fees	160.50
Interest Earned	321.99
Local Walks	31.21
Meany Ski Hut.....	239.15
Special Outings	158.72
Summer Outing	201.59
Old Account Collected.....	5.73

\$3,406.77

Balance Sheet as at October 31, 1929

ASSETS

Cash on Hand, Treasurer.....	\$ 52.26
Cash on Hand, Kitsap Cabin.....	159.70
Cash on Hand, Local Walks.....	31.21
National Bank of Commerce.....	\$ 243.17
P. S. Savings and Loan Assn.....	1,088.72
Dime and Dollar Savings and Loan.....	407.54
	376.53
	\$2,115.96
Bonds to secure Permanent Fund.....	5,721.32
Bonds to secure Permanent Summer Outing.....	1,000.00
Furniture and Fixtures.....	835.40
Inventory, Peak Pins.....	6.00
Library	51.00
Kitsap Cabin	2,631.41
Snoqualmie Lodge	3,440.37
Meany Ski Hut.....	2,194.23
Accrued Interest	125.85
Unexpired Insurance	212.28
Loan to Meany Ski Hut Committee.....	100.00

Total Assets.....\$18,433.82

LIABILITIES

Accounts Payable\$ 60.50

CAPITAL AND SURPLUS

Permanent Fund	\$5,800.12
Permanent Fund, Sum. Out.....	1,000.00
	6,800.12
Surplus Acct. Oct. 31. 1928.....	\$10,521.45
Minor Adj. from Prior Years.....	2.98
Balance from P. & L. Acct.....	1,048.77
	11,573.20

\$18,433.82

MOUNTAINEERS, INC.

Seattle, Wash.

Gentlemen:

At the request of your Treasurer I have examined his records of Receipts and Disbursements for the year ending October 31, 1929, and find that an accurate account of both has been kept, and that the balance of Cash on hand in the various depositories coincides with his records. The reports of the various Committees have been consolidated with the Treasurer's records. Bonds securing the Permanent Funds were examined and found to aggregate \$7,000. I am of the opinion that the Balance Sheet and Profit and Loss Account reflect an accurate picture of the organization's present condition and the results of the past year's operations.

CHARLES E. WICKS, Auditor.

LOCAL WALKS COMMITTEE

RECEIPTS:

Local Walks	\$ 335.75
Beach Fires	30.36
Refund of Fare.....	9.00
Kitsap Cabin Refund of Fares.....	2.80
Advance from Treasurer.....	30.00

TOTAL\$ 407.91

DISBURSEMENTS:

Commissary	\$ 21.70
Transportation	325.00
Return to Treasurer.....	30.00

TOTAL\$ 376.70

PROFIT31.21

\$ 407.91

ARTHUR WINDER, Chairman.

1929 SUMMER OUTING

RECEIPTS

From Members	\$5,524.00
Prospectus Ads	128.00
Warrants Cashd	3,255.29
Interest Received	34.75
Interest on Seymour Bonds.....	60.00
Commissary Sold	72.84
Canadian Customs, Refund.....	888.50
Miscellaneous	25.05
Loan from Treasurer.....	100.00

DISBURSEMENTS

Park Fees and Customs.....	\$ 52.60	\$10,088.43
Accident Insurance	175.80	
Commissary and Equipment.....	1,011.43	
Pack Train and Transportation.....	3,368.35	
Swiss Guides	84.00	
Cooks and Helpers.....	306.00	
Freight	93.75	
Prospectus	148.00	
192* Scouting	86.25	
Committee Expense	91.92	
Refunds	108.00	
Warrants Purchased	3,255.29	
Canadian Drafts and Currency.....	888.50	
Miscellaneous	102.45	
Return of Loan.....	100.00	

Check to Balance.....		\$ 9,872.34
		216.09
		\$10,088.43

CHRIS LEHMAN, Chairman.

SPECIAL OUTINGS COMMITTEE

Summer of 1929

RECEIPTS:

Total Remittances	\$ 492.45
Sale of Commissary	2.85

DISBURSEMENTS:

Transportation	\$ 124.10
Commissary	152.23
Scouting	5.50
Equipment and Supplies.....	1.70
Refund	3.50
Film	5.00
Cook's Wages, etc.....	44.55

Balance		\$ 336.58
		158.72

\$495.30

Attendance for Year—151.
Number of Outings—3.

ROBT. H. HAYES, Chairman,
AGNES FREM, Secretary.

MEANY SKI HUT COMMITTEE

To May 16, 1929

RECEIPTS—NOVEMBER 1, 1928 TO MAY 16, 1929.

Hut Fees	\$ 965.83
Commissary sold from supply.....	.35
Received from General Fund of Club.....	202.03
Donations	45.00

Total receipts		\$1,213.21
Auditor's correction to reconcile account.....		8.82

DISBURSEMENTS:

Commissary	\$ 376.05
Committee Expense	128.80
Transportation (Dedication party).....	38.79
Cook	71.60

Miscellaneous:	
Carting, freight and express.....	\$ 32.34
Equipment	36.76
Taxes	2.32
Refunds on deposits.....	10.00
Returned to General Fund.....	300.00
Small miscellaneous items.....	15.89
Check to balance account.....	142.35

Permanent Improvements		539.66
		67.13

Total disbursements		\$1,222.03
---------------------------	--	------------

Respectfully submitted,
EDITH SCOTT, Financial Secretary.

SNOQUALMIE LODGE
Year ending October 31, 1929

RECEIPTS:		
Meals	\$1,318.45	
Lodge Fees	623.55	
Canteen	95.30	
Movie Film	5.70	
Miscellaneous	17.74	
General Fund	593.15	
Total Receipts		\$2,653.89
DISBURSEMENTS:		
Commissary	\$1,114.41	
Lodge Maintenance	195.46	
Freight and Express	9.23	
Lodge Equipment	32.03	
Miscellaneous Expense	144.76	
Caretaker	1,100.00	
Transportation	53.70	
Movie Film	6.00	
Canteen	28.30	
Total Disbursements		\$2,653.89
BILLS RECEIVABLE:		
9 Ten Peak Pins @ \$1.00	\$ 9.00	
Back Dues	2.35	
		\$ 11.35
BILLS PAYABLE (estimated):		
Rental of Horse	\$ 22.00	
Builders Hardware Co. (supplies)	17.33	
		\$ 39.33
Commissary on Hand	\$ 20.00	
Feed	3.40	
		\$ 23.40

LAURENCE D. BYINGTON, Chairman.
EULALIE E. LASNIER, Secretary.

KITSAP CABIN

November 1, 1928, to October 31, 1929

Balance in bank—November 10, 1928..... 10

RECEIPTS:		
Commissary	\$ 342.35	
Fees	190.45	
Advance by Treasurer	200.00	
Miscellaneous:		
Local walk	\$ 2.80	
Special boat—Theatre party	109.20	
Theatre party receipts	240.55	
Wood sold	4.00	
Rent for cabins—\$7.50 each—C. M. Bixby and Wm. B. Remy	15.00	
	371.55	
Total Receipts		1,104.35
		\$1,104.45
DISBURSEMENTS:		
Commissary	\$ 346.75	
Repairs and Replacements	31.91	
Caretaker's salary	300.00	
Women's Quarters	6.80	
Taxes	44.35	
Miscellaneous:		
Local walk	\$ 2.80	
Lamp repairs and gas	5.00	
Special boat—Theatre party	75.00	
Theatre party—"Players"	120.25	
Party expenses—entertainment	11.89	
	214.94	
Total Disbursements		\$ 944.75
Balance in bank October 31, 1929		159.70
		\$1,104.45

KATHARINE ASHER.

THE MOUNTAINEERS

TRUSTEES AND COMMITTEES, SEATTLE

Edmond S. Meany, President	Harry M. Myers, Secretary	Edwin H. Gilbert, Treasurer
Edward W. Allen, Vice-President	P. O. Box 122, CA. 5020	Gertrude I. Streator, Historian
Winona Bailey	Mrs. Joseph T. Hazard	Harry R. Morgan
Rial Benjamin, Jr., Tacoma	Harold A. Mayer	L. A. Nelson
F. B. Farquharson	Mabel E. McBain, Everett	H. W. Playter
E. E. Fitzsimmons	P. M. McGregor	Ronald R. Ruddiman
	Ben C. Mooers	
	Eulalie E. Lasnier, Financial Secretary	
	Edith Copestick, Recording Secretary	

CHAIRMEN OF COMMITTEES

Outing, 1930 L. A. Nelson	Membership Mary Dunning
Kitsap Cabin E. E. Fitzsimmons	Club Room Doris Sundling
Local Walks Harold A. Mayer	Entertainment Redick H. McKee
Meany Ski Hut W. J. Maxwell	Finance and Budget Edwin H. Gilbert
Ski Robert H. Hayes	National Parks Edward W. Allen
Snoqualmie Lodge Harry R. Morgan	Custodian of Record Tubes Ben C. Mooers
Special Outings Wm. A. Degenhardt	Record of the Ascents of the Six Major Peaks Lulie Nettleton
Future Summer Outings C. A. Fisher	Librarian Mrs. Herman P. Wunderling
Geographic Names C. G. Morrison	Reporter Edmond S. Meany, Jr.
Acheson Cup A. H. Hudson	Publicity for Summer Outings S. J. Fosdick
Legislative Frank P. Helsell	Buying Supplies Harry R. Morgan
U. of W. Summer School Trips F. B. Farquharson	Editor of Annual Winona Bailey
Custodian of Club Room Clayton Crawford	Editor of Bulletin Mrs. Joseph T. Hazard
Custodian of Lantern Slides H. V. Abel	
Custodian Moving Picture Equipment Laurence D. Byington	

TACOMA BRANCH

EXECUTIVE COMMITTEE

Mont J. Downing.....President	Earle D. Smith.....Secretary-Treasurer
Alice Fraser.....Vice-President	Rial Benjamin, Jr.....Trustee
A. H. Denman	R. B. Kizer
	Margaret S. Young

CHAIRMEN OF STANDING COMMITTEES

Local Walks	Special Outings	Irish Cabin
Rial Benjamin, Jr.		Eva Simmonds

EVERETT BRANCH

OFFICERS

Christian H. Lehmann.....President	Ernestine Riggs.....Secretary
Nan Thompson.....Treasurer	Mabel E. McBain.....Trustee
Chairman of Local Walks, Paul Gaskill	

MEMBERSHIP OF THE MOUNTAINEERS

November 1, 1929

Seattle	660
Tacoma	89
Everett	64
Total.....	813

THE MOUNTAINEERS

List of Members, October 31, 1929

HONORARY MEMBERSHIP

Col. Wm. B. Greeley

S. E. Paschall

J. B. Flett

LIFE MEMBERSHIP

Mrs. Naomi Achenbach Benson
 Rodney L. Glisan
 A. S. Kerry
 Edmond S. Meany

Edmond S. Meany, Jr.
 Reginald H. Parsons
 Robert Moran

COMPLIMENTARY MEMBERS

E. C. Barnes
 C. B. Caldwell

H. R. Denzine
 Arthur E. Overman

Arthur Rooks
 Ted Rooks

SEATTLE

(Place is Seattle unless otherwise stated.)

(Names of members who have climbed the Six Major Peaks of Washington are printed in boldface.)

ABEL, H. V., 1462 3rd Ave., PR 1255.
 ADJUTANT, Dorothy, 4417 W. Charleston St., WE 4989.
 AHRENS, Annice R., 1619 E. Thomas.
ALBERTSON, Charles, First National Bank of Aberdeen, Aberdeen, Wash.
 ALEXANDER, Phyllis, 609 Broadway No.
 ALLAN, James, 725 Leary Bldg.
 ALLEN, E. May, 151 Home Ave., Rutherford, N. J.
 ALLEN, Edw. W., 1312 Northern Life Tower, EL 3429.
 AMSLER, R., 923 Cherry St., MA 0873.
 ANDERSON, Andrew W., 949 19th Ave. No., EA 4403.
ANDERSON, C. L., 327 15th Ave. W., Calgary, Alta.
 ANDERSON, Lucile, 4871 13th Ave. So., GL 1834.
 ANDERSON, Lloyd, 4738 19th Ave. N. E., KE 1339.
 ANDERSON, Myron W., 949 19th Ave., No., EA 4403.
 ANDERSON, Wm. H., 4464 Fremont Ave.
 ANDREWS, Clarence L., Deering, Alaska
 ANGUS, Dulcie, 5103 Adams St., RA 5101
 ANGUS, Helen B., 6071 Harper Ave., Chicago, Ill., Dorchester 9706
 ASHER, Katherine, 4706 17th Ave. N. E., KE 0702
 ATKINSON, Dorothy F., 4125 Brooklyn Ave.
 AUZIAS de Turenne, R., 1205 E. Prospect, CA 2191
 BABCOCK, Edna E., 20th E. 47th St., ME 5369
 BAILEY, James M., 1602 Northern Life Tower, SE 0377
BAILEY, Winona, 1426 Warren Ave., GA 2722
 BAKER, Mary N., 54 Morningside Drive, Apt. 51, New York, N. Y.
 BALL, Fred W., 905 Jefferson St., Apt. B-4, EL 8219 or EL 2600
 BALSER, Mary A., 2124 Eighth Ave. No., GA 2844
 BARKER, Mabelle, 1902 Fifth Ave. No., GA 3945
 BARR, Mark, 2905 E. Cherry St., EA 8985
 BARRETT, Gordon S., 1811 23rd Ave. No., EA 6844
 BARTON, Harry, 2512 18th Ave. So., BE 3648
 BAUER, Wolf, 5608 17th Ave. N. E., VE 0089

BEACH, Katharine B., 226 E. Twelfth St., New York, N. Y.
 BEARSE, Margaret, 900 Leary Bldg., MA 0091.
 BECKER, Lillian, 505 E. Denny Way, EA 4294
 BEDINGER, Margery, Public Library, or Piedmont Hotel, EL 0188
 BEEDE, J. Frank, 5206 20th Ave., N. E., KE 1497
 BEGINN, Matthieu J., 2528 Yale Ave. No., CA 4775
 BELT, H. C., 4733 19th Ave. N. E., KE 3440
 BENNETT, Edith Page, Women's University Club, EL 3748
 BENNETT, Prof. H. B., Maryhill, Wash.
 BENNETT, M. Pearl, 6556 Sycamore Ave., SU 1731
 BENTLEY, Dr. Frederick, 406 Cobb Bldg., MA 2587
 BERANEK, John G., 605 Spring St., MA 0624
 BERG, Anna M., 1102 Ninth Ave.
 BEST, Walter C., 1121 Post St., VE 4176 or EL 6552
 BIGELOW, Alida, 1866 No. Pennsylvania, Indianapolis, Ind.
 BISHOP, Lottie G., Yale Station, New Haven, Conn.
 BIXBY, C. M., R. F. D., Charleston, Wash.
 BIXBY, William, R. F. D., Charleston, Wash.
 BLAINE, Fannie, 505 Simpson Ave., Aberdeen, Wash.
 BLAIR, Dorothea, 4205 15th Ave. N. E., ME 3292 or RA 2470
 BLAKE, J. Fred, 2918 Magnolia Blvd., GA 6986
 BLAKEMORE, Maxine, 1835 Ravenna Blvd., KE 4883
 BLAKESLEE, Emily, M. D., 258 Wayne St., Sandusky, Ohio
 BLANK, E. Margaretha, 1525 Snoqualmie St., GL 0145
 BLUE, Eugenia, 4547 19th Ave., N. E., KE 4312
 BLUM, Alan, 2716 N. Broadway, CA 1532
 BLUM, John R., 2716 N. Broadway, CA 1532
 BOEING, E. Lois, 7329 Vashon Pl.
 BONELL, Aura M., Fall City, Wash.
 BONELL, Hannah, East Falls Church, Virginia
 BOONE, Daniel, Jr., 5809 1/2 Duwamish Ave., GL 0664
 BOOTH, Laurence S., 816 Second Ave., MA 1534

- BORDSON, Carl W., 720 Liggett Bldg., or 11217 2nd N. W., SU 5851 or EL 5794
- BORDSON, Dr. T. L., 702 Joshua Green Bldg., or 11217 2nd N. W., SU 5851 or EL 1426
- BOSTWICK, Irene Neilson, 4009 15th Ave. N. E., ME 1577
- BOWMAN, J. N., 1725 Francisco St., Berkeley, Calif.
- BOWMAN, Mrs. J. N., 1725 Francisco St., Berkeley, Calif.
- BREMERMAN, Glen F.**, 5834 Woodlawn Ave., ME 9114 or MA 7584
- BREYEN, Gertrude, 418 N. Main, Silverton, Ore.
- BRINCARD, J., 512 Washington Ave., Bremerton, Wash.
- BRINES, Ruth Gainer, 900 Leary Bldg., MA 0091
- BRITTON, Hazel M., 642 Central Bldg.
- BROWN, H. E. D., care U. S. Forest Service, Concrete, Wash.
- BRYANT, Mrs. Grace, 1914 No. 48th St., ME 4089
- BRYCE, Mrs. Dawn, 165 Dravus St., GA 8252
- BUELL, Jesse H., Appalachian Forest Experiment Station, Asheville, N. C.
- BUGGE, Elwyn, 639 University Ave., Palo Alto, Calif.
- BURCKETT, Douglas M., College Club, MA 0624
- BUREN, Maxine, 5818 17th Ave. N. E., KE 8971
- BURFORD, W. B., 414 Maritime Bldg., MA 3335
- BURNETT, Hazel, Seahurst, Wash., GL 2505 J 1
- BURNETT, Robert, Jr., 328 38th Ave. So., RA 5178
- BURNS, Lillian W., 1860 Washington St., San Francisco, Calif.
- BURR, Wallace H., 8202 14th Ave. N. E., VE 0817
- BURSELL, Frances I., 4548 Eighth Ave. N. E., ME 2790
- BUSSONG, Jean, 4861 Beach Drive, WE 0085
- BUTLER, William L., 9733 Arrowsmith Ave., RA 2682
- BYE, Lillian, 924 Allison St., CA 1416
- BYINGTON, Laurence D., 5034 15th Ave. N. E., KE 1545 or MA 7305
- CADMAN, W. E., 906 32nd So., BE 2645
- CANEDY, Helen, 7732 37th Ave. S. W., WE 3489
- CARKEEK, A. P., Kirkland, Wash., Main 74
- CARLSON, Albert, Camp 1, Neah Bay, Wash.
- CARNEGIE-PRIOR, Winifred, Box 111, Bryn Mawr, King Co., Wash.
- CARNEY, Elvin P., 855 Dexter Horton Bldg., MA 6300
- CARPE, Allen, 195 Broadway, New York, N. Y.
- CARR, Mrs. S. R., 3941 First Ave. N. E., ME 2958
- CASTOR, T. Davis, 4411 Phinney Ave., ME 4583
- CHAMBERS, Eva, 900 Leary Bldg., MA 0091
- CHAPMAN, Effie L., Public Library, EL 3748 or MA 3995
- CHILD, Elsie T., 311 Douglas Bldg., EL 5359
- CHURCH, Anna, 4125 Brooklyn Ave.
- CHURCH, Richard A., 516 Malden Ave., CA 2058
- CISSKI, Z. Irving, 3230 Belden, Irving Park Sta., Chicago, Ill.
- CLARK IRVING M., Gstaad, Bernese Oberland, Switzerland
- CLARK, Mrs. Irving M., Gstaad, Bernese Oberland, Switzerland
- CLARK, Leland J., R. F. D. No. 1, Bellevue, Wash., Lakeside 69J
- CLARK, Leland J., Jr., Rt. No. 1, Box 116, Bellevue, Wash., Lakeside 69J
- CLEVERLY, Maude, 1610 Broadway, PR 2600
- CLISE, J. W., Jr., 540 Hillside Drive, PR 2113
- COLEMAN, F. R., P. O., Box 478, Weed, Calif.
- COLEMAN, Linda M.**, Apt. 305, 1203 James St.
- COLLINS, Dan M., 4323 Thackeray Place, ME 0944
- COLLINS, Lee R., 7706 15th Ave. N. E.
- CONDON, Robert W., 4718 21st Ave. N. E., KE 0559
- CONWAY, Mrs. T. R., 608 Schuyler Place, Portland, Ore.
- COPELAND, May, 1407 E. 45th, ME 1295
- COPESTICK, Edith, 208 Walker Bldg., or 1705 Belmont Ave., MA 4755 or EA 3102
- COREY, C. R., 6203 15th Ave. N. E., VE 2175
- COREY, Eleanor, 6203 15th Ave. N. E., VE 2175
- CORNISH, Carol, 1902 5th No., GA 3945
- COSTELLO, W. J., 316 West 3rd St., Cle Elum, Wash., Main 911
- COURSEN, Edgar E.**, 658 Lovejoy St., Portland, Ore., Broadway 5608
- COX, A. H., 1757 First Ave. So., MA 1121
- CRAVEN, Inez H., 4719 15th Ave. N. E., KE 2423
- CRAWFORD, Clayton, 408 Marion St., MA 1463, or CA 1412
- CREEVEY, H. J., 4725 53rd Ave. So., RA 4404
- CROOK, C. G., Box 1866, or 1927 Calhoun St., EA 9831
- CROSON, Carl E., 900 Leary Bldg., MA 0091
- CROWELL, Eva L., 4009 15th Ave. N. E., Apt. 526, ME 9668
- CROWLEY, Louise D., 1509 Medical Dental Bldg., MA 8360
- CUNNINGHAM, H. E., 2314 E. Lynn St., EA 4666
- CUNNINGHAM Mrs. Jos. W., 2108 E. 54th St., KE 2075
- CURRIER, Mrs. Irene K., 1000 Cobb Bldg.
- CURTIS, Leslie F., 162 Springfield St., Springfield, Mass.
- DAHLGREN, Amy M., No. 3 Monticello Apts., Longview, Wash.
- D'ALGODT, Otto, 159-18, 84th Road, Jamaica, L. I., N. Y.
- DARLING, WM. C., 916 N. 61st St., SU 3388
- DARSIE, Helen, Technology Division, Seattle Public Library
- DART, Mrs. L. O. No. 12, 414 Boren
- DAVIDSON, ORA, 1102 Eighth Ave.
- DAVIS, Fidelia G., City Engineers Office, MA 6000, Loc. 15
- DEAN, Hillen Elizabeth, 2669 36th S. W., WE 7037
- DEAN, Mary Owen, 3rd, 2669 36th S. W., WE 7037
- DeFOREST, Elliott, 222 Hamlin St., CA 6258
- DEGENHARDT, Wm. A., 821 Northern Life Tower, EL 8258
- DENNIS, Ruth A., 345 W. Locust St., Dubuque, Iowa
- DENZEL, George, 708 W. Howe St., EL 5060
- DERRY, Faye G., 1226 Bigelow Ave., GA 8387

- DICKERSON, Elizabeth, Woodinville, Wash.
 DICKSON, Geo. M., Jr., 212 Hoge Bldg., MA 5896
 DIMOCK, Dorothy, 424 35th Ave., PR 2674
 DU BOIS, Jeanette, 514 W. Ninth St., Vancouver, Wash.
 DODGE, Mildred L., Court House, Yakima, Wash.
 DOLLING, Curt A., 121 11th Ave. No., EA 2255
 DUBUAR, Dorothy D., care Lomen Reindeer Corp., Colman Bldg., EL 160
 DUBUAR, Paul S., 903 31st Ave., PR 0728
 DUCKERT, William C., 535 Sixth St., Bremerton, Wash., 16 W.
 DUDLEY, Dorothy, Box 296, Cadwell, Idaho
 DUNNING, Mary, 1119 E. 43rd and 12th N. E., ME 9257
 DUPUIS, Frederick, 1760 E. 62nd St., KE 3454
 DUTTON, Marshall, 3355 E. Laurelhurst Drive, KE 3784
 DYER, Ralph L., 937 20th Ave. No., EA 9723
 EHRENCLOU, O. A., Northern Life Ins. Co., MA 2794
 ELLIS, R. E., 2730 30th Ave. So., RA 1066
 ENGLE, Norman W., 6266 19th Ave. N. E., KE 5335
 ENTZ, Ruby, 5631 15th Ave., N. E., KE 5761
 ERICKSON, Gilbert, 4621 51st Ave. So.
 EVERTS, A. B., 613 Hoge Bldg., MA 9406
 EVERTS, T. D., 613 Hoge Bldg., MA 9406
 EWER, Eunice E., 1037 Burwell St., Bremerton, Wash.
 EWING, Clarke, 301 Home Savings Bldg.
 FAHEY, Florence, 2916 Dearborn St., BE 0762
 FAIRBANKS, Walter E., P. O. Box 2186
 FALING, L. Ruth, 617 W. Walnut St., Kalamazoo, Mich.
 FARQUHARSON, F. B., 2126 E. 47th
 FARRER, C. M., 561 Empire Bldg., EL 7314 or RA 1624
 FARRER, Peyton M., Concord, Calif.
 FARWELL, Hollis, 271 Pine St., Portland, Ore., or 1917 3rd W., GA 5110, Seattle, Wash.
 FENTON, Fred A., 3611 59th Ave. S.W.
 FIELD, Norman L., 1904 47th Ave. S.W., WE 3078
 FINCH, Ramona, 1119 E. 43rd and 12th N.E., ME 9257
 FIRMIN, Kate M., 203 W. Comstock, GA 3456
 FISHER, Clarence A., 2309 Eldridge Ave., Bellingham, Wash., 3189 W.
 FITE, F. Barton, Jr., 900 Leary Bldg., MA 0091
 FITZ, Morgan H., 3033 27th Ave. W., GA 2944
 FITZGERALD, Roy G., 117 Forest Ave., Dayton, Ohio
FITZSIMMONS, Ernest E., 1514 16th Ave. No., EA 4653
 FITZSIMMONS, Ruth, 712 Thompson Bldg.
 FLETCHER, Blanche, 6009 Tenth Ave. N.E., KE 0821
 FLETCHER, Mira M., R.F.D. No. 7, Box 324, GL 2012-J-1
 FLETT, Prof. J. B., R.F.D. No. 1, Bremerton, Wash.
 FORAN, Lester, 644 Dexter Horton Bldg., MA 1740, or KE 0262
 FORSYTH, Lydia B., 2203 California Ave., WE 9623
 FORSYTH, O. M., Ballard High School
 FOSDICK, S. J., 1115 E. 43rd
 FOX, Alex, 1917 Bradley Place, Chicago, Illinois
 FRANK, Mildred Elizabeth, 7543 18th Ave. N.E., KE 5339
 FRANKLIN, Floyd E., 4667 Lake Washington Blvd. So., RA 3458
FRAZEUR, Laurie E., 5900 Glenwood Ave., Uptown Station, Chicago, Ill.
 FREM, Agnes, 5517 University Blvd., KE 3162
 FREM, H. H., 5517 University Blvd., KE 3162
 FRENCH, Boyd, 910 E. 62nd St., VE 3831
 FRIELE, Haakon B., 1355 Dexter Horton Bldg.
 FROELICH, John F., 204 County-City Bldg., MA 6000, Loc. 324
 FROISTAD, Wilmer, 4005 15th Ave. N.E., ME 2616
FULLER, Howard A., 920 Electric St., Scranton, Pa.
FURRY, Mabel, 1217 Second Ave. No., GA 1772
 GALATIAN, A. B., Beachwood, N. J.
 GALLAGHER, James O., 3401 E. Mercer St., EA 4798
 GARDNER, Albro, Jr., 1607 7th Ave. W., MA 4606
 GASTON, Louis, 5815 17th Ave. N.E., KE 5182
 GAVETT, Geo. Irving, 5613 12th Ave. N.E., KE 1883
 GEHRES, L. F., 1101 Telephone Bldg., EL 9000
 GEITHMANN, Harriet, 5039 15th Ave. N.E., KE 1246
 GERRY, Chas. A., Hotel Lewis, 5725 Woodward Ave., Detroit, Mich.
 GIESE, Hans-Otto, 4736 18th Ave. N.E., KE 0195 or SE 0335
 GILBERT, Edwin H., 503 E. 72nd St., MA 1505
 GILLIETTE, Cora M., 213 12th Ave. No.
 GLEASON, Fred E., 1304 E. 62nd St., KE 1628
 GLEASON, Robert J., 1304 E. 62nd St., KE 1628
GLISAN, R. L., 612 Spaulding Bldg., Portland, Ore., MA 1514
 GOEMMER, O. A., 2531 2nd Ave. W., GA 7039 or Arctic Bldg., SE 1360
 GOFF, Mattie, 2803 Mt. St. Helen's Pl.
 GORHAM, Elizabeth, 5717 16th Ave. N.E., KE 2424
 GORHAM, Wm. H., P. O. Box 263, KE 2424
GORTON, F. Q., 5012 California Ave., WE 3901
 GOURLAY, Kathryn, 3275 41st Ave. S.W.
 GRAGE, H. W., 5260 Brooklyn Ave., VE 2620
 GRAHN, William, 422 Maiden Ave., PR 5884
GRANGER, Mildred, Clark Hotel, 1014 Minor, EL 3922
 GRANT, L. R., 2323 No. Broadway, CA 3054
 GREENLEIGH, Col. W. B., West Coast Lumberman's Association, Stuart Bldg.
 GREENLAND, Nora E., 907 Boren Ave.
 GREGG, Marjorie V., 937 Henry Bldg., EL 0758
 GREINER, Dr. F. W., 5223 Ballard Ave., SU 0205
 GRELL, E. F., 540 30th Ave. So., BE 3699
 GRELLE, Elsa, Route 6, Portland, Ore., BE 2826
 GRIGG, N. W., 6223 Greenwood Ave., SU 1830
 GRIGGS, W. J., 313 E. 11th St., Olympia, Wash.
 GUENTHER, Stuart H., 904 Miller St., CA 4087

- GUTHRIE, Elton F., Dept. of Sociology, U. of W., ME 7053
 HARBERGER, Frank A., 431 Lyon Bldg., EL 1340
 HACK, E. M., 1431 Medical Dental Bldg., MA 1762
 HAGMAN, Reuben, 1120 Great No. Ry. Bldg., St. Paul, Minn., Nester 2406
 HALFEY, Lucia, 226 N. 30th St., Corvallis, Ore.
 HALL, Anne E., 2017 Ravenna Blvd., KE 1194
 HANSON, Corinne, 3118 22nd Ave. So., RA 0518
 HANSON, Helen, Apt. 2, 1126 East 56th St., Chicago, Ill.
 HARRY, Horace, 1508 E. 62nd St., KE 4215
 HARBY, Sam, 1508 E. 62nd St., KE 4215
 HARDEMAN, Joe T., 1106 W. Howe St., GA 2283
 HARDEMAN, Russella, 1106 W. Howe St., GA 2283
 HARDENBERGH, George E., 3150 E. Laurelhurst Dr., KE 0705
 HARLEY, Katrina, 4802 E. 39th St., KE 4682
HARNDEN, E. W., 1118 Barristers Hall, Pemberton Square, Boston, Mass.
 HARPER, Harold, P. O. Box 3003
 HARPER, Paul C., 678 W. Prospect St.
 HARPUR, E. A., 1123 Marion St., MA 3568
 HARRIS, Ernest N., Box 418, Westfield, Mass.
 HARRIS, Mrs. Ernest N., Box 418, Westfield, Mass.
 HARRIS, Mildred, 2619 Cedar, Everett, Wash.
 HARRISON, E. Wilfrid, 103 E. 125th St., New York, N. Y.
 HAUCK, Hazel M., 12 E. Gilman St., Madison, Wis.
 HAWTHORNE, Rebecca, 1215 E. Lynn St., CA 1182
 HAYES, Robert H., 1114 Valley St., RA 1066, or CA 0100
 HAYES, Rutherford B., 828 E. 69th St.
HAZARD, Joseph T., P. O. Box 234, ME 3236
HAZARD, Mrs. Joseph T., P. O. Box 234, ME 3236
 HAZLEHURST, Charles, 1600 Liberty Trust, Philadelphia, Pa.
 HEATH, L. C., 2822 Boylston Ave. No., CA 4094
 HELSELL, Frank P., R. F. D. Hunt's Point, Bellevue, Wash.
 HESTER, Myrtle, 124 15th Ave. No., EA 4869 or MA 6554
 HEUSTON, Alfred N., 14 Wall St., New York, N. Y.
 HIGMAN, Chester, 1320 E. 63rd St., KE 4815
 HIGMAN, H. W., 1320 E. 63rd St., KE 4815
 HILZINGER, Julia M., New Richmond Hotel, MA 3153
 HINCKLEY, Carol, 5030 19th Ave. N.E., KE 1330
 HODGKINS, Ethel, 720 Broadway, PR 0575
 HODGSON, Henry H., 2930 Harvard Ave. No., CA 4564
 HOFFMAN, Frances, Frye Hotel, MA 2680
 HOFFMAN, Dr. W. F., 817 Summit Ave., EL 2454
 HOLBROOK, Zelma, New Richmond Hotel, MA 3153
 HOLEN, Nellie, 711 Summit Ave. No.
 HOLEN, Sally, 711 Summit Ave. No.
 HOLMES, Kate M., 215 23rd Ave. No.
 HOLMES, W. K., Jr., 605 Spring St., MA 0624
 HOOVER, Amy B., Clark Hotel, 1014 Minor Ave., EL 3922
 HOPPOCK, Gertrude, 401 Northcliffe Apts., 1119 Boren Ave.
 HORNING, J. R., 7002 18th Ave. N.E., KE 3239
 HOUCK, M. M., Piedmont Hotel, 1109 Summit Ave., EL 0188
 HOUSTON, D. H., 520 Lumber Exchange Bldg., EL 2312
 HOWARD, Grace E., 23 Denton Road W., Wellesley, Mass.
 HOWARD-SMITH, L., College Club
 HUBER, Fred, 6239 33rd Ave. N.E., KE 7924
HUDSON, Augustus H., Box 393, Bremerton, Wash., 1039-J, or Bus. Navy Yard 397
 HULL, R. E., P. O. Box 714, Yakima, Wash.
 HULTIN, C. A., Virginus Hotel, 804 Virginia St., FL 4541
 HUTCHINS, Lewis, 7517 32nd Ave. N.W., SU 2290
 IMPICOVEN, Helen, Frye Hotel
 IRICK, Matha, Mission Inn Hotel, EA 9664
 ISAACS, Ruth Fulton, Hotel Clark, EL 3922
 ISRAEL, Bergina, 1633 Tenth Ave. W.
 JOHNSON, Margie G., 322 Tenth Ave. No., CA 3612
 JOHNSON, Jennie M., 1914 North 48th
 JONES, Nancy E., Medina, Wash.
 JOSEPHANS, Sarah C., 4522 Brooklyn Ave.
 KAHAN, Dr. O. E., 320 Cobb Bldg., EL 3423
 KASSEBAUM, Emma, 1712 Summit Ave., EA 0440
 KAYE, Abram L., 4411 W. Othello St., WE 5314
 KECK, H. W., College Club, MA 0624
 KEENE, Mildred Y., Women's University Club
 KEENEY, B. Dale, 124 W. 83rd, MA 6000, Loc. 30
 KELLETT, Gwendolyn, 1609 E. Columbia St.
 KELLOGG, Lucien, Elks Club
 KELLY, Clara J., 144 32nd Ave., BE 2058
 KERRY, A. S., 1139 Henry Bldg., EL 1862
 KIDD, Jessie A., 1005 White Bldg., MA 8178
 KIEKENAPP, Hortense, 5104 48th Ave. South
KING, Cora Smith, 1322 N. Vermont Ave., Hollywood, Calif.
 KIRBY, C. May, 118 17th Ave. No., EA 4816
 KIRK, Howard S., 2283 E. 60th St., KE 4051
 KIRKMAN, Elsie, 816 Second Ave.
 KIRKWOOD, Elizabeth I., 5030 17th Ave. N.E., KE 1667
 KMENT, Emma, 1305 E. Howell
 KOBELT, E. E., 630 W. 82nd St., SU 0738
 KOHLER, Ineson J., 7217 36th Ave. S.W., WE 1517
KRATSCHE, Ida Rose, 2107 Warren Ave., GA 7950
 KRAUS, Ethel M., 6041 Beach Drive, WE 4031
 KRETECK, Anna, 210 McDowell Bldg.
 LACOCK, Gertrude, 330 Wadsworth Ave., New York, N. Y.
 LA FOLLETTE, Frances, 6220 Ingleside Ave., Chicago, Ill., Midway 6546
 LAMB, Frank, Cleveland & Wheeler Sts. Hoquiam, Wash., 328
 LANT, J. Glen, 4227 12th Ave. N.E., ME 5643

- LARSON, Gladys Elida, 707 W. Pine St., Yakima, Wash.
- LASNIER, Eulalie E., 1817 Ravenna Blvd., KE 5999
- LAURIDSEN, M. J., 717 First Ave., EL 8165
- LA VELLE, E. Lester, P. O. Box 1133 LAW, Martha, Assembly Hotel, EL 4174
- LEAR, H. B., University National Bank, ME 1212
- LEBER, Ralph E., 1634 22nd N., EA 9815
- LEE, Fairman B., 4025 E. Garfield St., EA 0199, or EL 4818
- LEEDE, Carl S., 1627 Medical Dental Bldg., MA 1824
- LEIGHTY, Charles M., 3727 Grand Blvd., East Chicago, Indiana
- LEITCH, Harriet E., Seattle Public Library
- LEWIS, Llewellyn S., Suite 51, 135 Washington St., Brighton, Mass., Stadium 0828
- LEWIS, Mrs. Llewellyn S., Suite 51, 135 Washington St., Brighton, Mass., Stadium 0828
- LEWIS, Theodore C., 5114 Arcade Bldg., SE 1450, or EA 7963
- LIDDELL, Ada, Seattle Public Library
- LILLICO, Stuart, 515 Harvard Ave. No., CA 3700
- LINDSTEDT, O. H., 4326 University Way, ME 5921
- LITTELL, Norman L., 5018 15th Ave. N. E.
- LITTLE, Dorothy V., 3831 49th Ave. NE., KE 5655
- LOMBARDINE, Marguerite, 4308 Meridian Ave., ME 4652
- LORD, Albert B., 321 Leary Bldg., EL 8456
- LOVELESS, Arthur L., 711 Broadway No., CA 5627
- LOVESETH, Lars**, King St. Sta. Ticket Office
- LUNDIN, Mrs. Emelia, 8741 Dayton Ave.
- LUNGREEN, Clyde E., P. O. Box 1831
- LYLE, Roy C., 16 Valley St.
- MacDIARMID, Florence M., 725 Leary Bldg., EL 3835
- MacMULLAN, Rita, 4119 Wentworth Ave., Minneapolis, Minn.
- MARBLE, Clarke F., 8316 Dayton Ave., SU 4538
- MARSHALL, Arthur H., Clark Hotel, Vancouver, Wash.
- MARTIN, James C., 623 E. 72nd St., KE 9121
- MARZOLF, Wm. A., 810 American Bank Bldg., or 1309 Dexter Ave., GA 7659, or MA 6481
- MATHER, Greta E., Piedmont Hotel, Seneca and Summit, EL 0188
- MATTHEWS, Will H., 3111 E. Denny Way, PR 2689
- MAXWELL, Wm. J.**, 6018 24th N.W., SU 0368
- MAYER, Harold A., 1928 Second Ave. W., GA 7325
- McALPINE, Eveleen S., 2319 Hobart S.W., WE 2630
- McBAIN, Lois, 1616 N. 36th St., ME 1954
- McCRILLIS, John W., Box 454, Newport, N. H.
- McCULLOCH, Mrs. S. A., 2146 N. 64th St., VE 0187
- McCULLOUGH, Emma K., 3820 Wallingford Ave., ME 6917
- McDONALD, Robert T., 5712 E. Green Lake Way
- McDOWELL, Elizabeth, 1702 Belmont Ave.
- McDOWELL, Ella R., 5209 15th Ave. N.E., MA 3995
- McFEE, Sue, 524 W. Highland Drive, GA 5799
- McGREGOR, P. M.**, 302 Cobb Bldg., MA 5704
- McGUIRE, Claire M., 514 Granada Apts., 1736 Belmont, EA 2415
- McKEE, Redick H., Otis Hotel, 804 Summit Ave., EA 0400, or MA 8863
- McKENZIE, Hugh**, 4906 Rainier Ave., RA 0909
- MEANY, Dr. E. S.**, 4024 9th Ave. N.E., ME 1709
- MEANY, E. S., Jr., 4024 9th Ave. N.E., ME 1709
- MIDGAARDEN, Esther, 1702 California Ave.
- MIDLER, Esther, 265 Henry St., New York, N. Y.
- MILLER, A. C., 812 E. 82nd St.
- MILLER, Ralph B., 7536 Seward Park Ave., RA 1759
- MILLER, Robert C., Shelby, No. Carolina
- MILLS, Mrs. Blake D., 938 22nd Ave. No., EA 7707
- MILLS, Harry E., 406 C. R. 1
- MINES, Gwendolyn L., 1758 E. 62nd St., KE 5804
- MOEN, Norman, 1905 Terry Ave., EL 5845
- MONTAIGNER, Henry F., Chalet Beau Reviel, Champéry, Valais, Switzerland
- MOOERS, Ben C.**, 523 Bennett St., GL 0459, or EL 7600, Loc. 68
- MORAN, Alice, 727 16th Ave. No., EA 1012
- MORAN, Robert, Rosario, Wash.
- MORE, Charles C., 4545 5th Ave. N.E., ME 3837
- MORGAN, Harry R., 4525 19th Ave. N.E., KE 2203
- MORGAN, W. P., 709 E. Aloha St., CA 4474, or EL 3417
- MORGANROTH, Mrs. E. R., 6100 West Spokane, WE 4801, or MA 5080
- MORRIS, Mrs. Geo. E., 1952 11th Ave. W., GA 0444
- MORRISEY, H. A., 7508 Bothel Way, KE 6544
- MORRISON, C. G., 1430 Tenth W., or 810 American Bank Bldg., GA 0917, or MA 1719
- MORRISSEY, George F., 1515 Broadway, EA 5000
- MORTON, Mrs. Sabina, R. F. D. Box 113, Santa Ana, Calif.
- MUELLER, Lynda R., S. 648 Arthur St., Spokane, Wash., LK 0716W
- MULLANE, Winifred, 1705 Summit Ave., EA 4716
- MULLEN, Roy, P. O. Box 2035, MA 2581
- MURPHY, Mary S., Frye Hotel
- MYERS, Harry McL., 2009 Broadway No., CA 5020
- MYERS, Robert, 30 Fifth Ave., New York, N. Y.
- NASH, Louis, 320 Summit Ave. No., CA 5062
- NEIKIRK, L. T., 4723 21st Ave. N.E., KE 0928
- NELSON, Helen E., 5764 24th Ave. N.E., KE 3358
- NELSON, L. A.**, 1108 Yeon Bldg., Portland, Ore., BE 5175, or Taber 5815
- NELSON, Valdemar, 3740 W. Webster St., WE 4912
- NETTLETON, Lullie**, 2020 Federal Ave., CA 0465
- NEWCOMB, Helen M., 530 Elm St., Westfield, N. J.
- NEWMAN, Cornelia, Apt. 207, 1629 Harvard.
- NICHOLS, Dr. Herbert S., 802 Corbett Bldg., Portland, Ore.
- NICKELL, Anne, 1356 Pearl St., Denver, Colo.

- NICKERSON, Rheba D., 5240 University Way, KE 2733
 NORRIS, Earl R., Dept. of Chem., U. of W., ME 0630, Loc. 127
- OAKLEY, Mary, 5261 16th Ave. N.E., KE 4223
 OBERG, John E., Y.M.C.A.
 O'BRIEN, Dave, Box 862
 O'DONNELL, Hugh, 704 12th Ave., EA 5527
- OLIVER, J. A., P. O. Box 226, Kent, Wash., 221 W
OLSON, Karen M., Room 1007, 1411 4th Ave. Bldg.
 O'NEILL, T. J., 210 McDowall Bldg.
 ONSTINE, Merle Jean, 907 Summit, MA 8160
 OSBORN, F. A., 5215 15th Ave. N.E., KE 1724
 OTIS, B. J., A 472, 905 Third Ave.
 OTIS, Mrs. Ira C., 4320 First Ave. N.E., ME 4416
- PALMER, Edna C., 1629 Harvard Ave., EA 0940
 PALMER, L. C., 4514 W. Charleston St., WE 4457
 PARSONS, Laura B., 8439 Dallas Ave., EL 3423
 PARSONS, Reginald H., 2300-2305 Northern Life Tower, EL 2874
 PARSONS, Theodore Hart, 4300 53rd Ave. N.E., KE 3685
 PASCHALL, Patience, Route 1, Bremerton, Wash.
 PASCHALL, S. E., Hidden Ranch, Route 1, Bremerton, Wash.
 PEASLEE, G. M., 4005 15th Ave. N.E., ME 2616
 PELZ, Freda E., 1502 E. Garfield St., EA 1564
 PENROSE, Frances, Women's University Club, EL 3748
 PEPPER, Leah H., 602 Melrose Ave. No., CA 0141
 PERRY, David, 5121 E. 41st St., KE 4433
 PERRY, Leta, Apt. 401, 1630 Boylston, EA 6400
 PETERS, Don, 1261 Dexter Horton Bldg., EL 0372
 PETERSON, J. Kenneth, 2106 E. 47th St., VE 2200.
 PICKEL, H. E., 1220 E. Newton St., CA 2501
 PIERCE, Jack C., 1126 17th Ave. No., EA 7660
 PINEO, Eleanor W., 4005 15th Ave. N.E.
 PITZEN, John G., 9257 51st St. So.
PLAYTER, H. Wilford, Apt. 303, 605 Minor Ave., MA 6393
 PLUMMER, Ira, Salmon Bay Sand & Gravel Co.
 POLLOCK, David E., 2707 10th Ave. No., CA 2521
 POWERS, Corinne, 123 Bellevue Ave. No., CA 4168, EL 0110
 PRESLEY, Carl, Apt. 401, 1619 E. John
 PRESTON, Helen, The Wilsonian, KE 1773
 PRICE, W. M., 524 First Ave. S., MA 8909
 PRICHARD, Louise G., 4005 15th Ave. N.E., ME 9192
 PRITCHARD, Millie, 8612 Island Drive, RA 0207
 PROSSOR, Doreen, 209 W. McGraw St., GA 6399
 PUGSLEY, Frank, 839 E. 81st St.
 QUIGLEY, Agnes E., 3433 Claremont Ave., RA 4506
- RAND, Olive, U. S. Navy Purchasing Office, Shanghai, China
 RAVASSE, Mlle. Yvonne, 418 Boyer Ave., Walla Walla, Wash.
- READ, Harold S., Royal Development Co., Leavenworth, Wash.
 REDINGTON, Bernice, 5818 17th Ave. N.E.
 REMEY, Mrs. Mary Paschall, Route 1, Bremerton, Wash.
REMEY, Wm. B., Route 1, Bremerton, Wash.
 REMICK, Dorothy, 521 Belmont Ave. No.
 REMY, Thos. N., Jr., 5503 12th Ave. N.E., KE 7784
 RHODES, Mrs. Hertha, 5764 24th Ave. N.E., KE 3358
 RICHARDSON, J. B., Lakeside, Wash.
RICKARDS, Mrs. E. A., 25 W. Highland Drive, GA 1676
 RIGG, Prof. Geo. B., 4719 9th Ave. N.E., ME 0349
 RIGG, Raymond R., 4719 9th Ave. N.E., ME 0349
 RITCHIE, Claude, 124 23rd Ave. So., MA 2000
 ROBERTS, Elizabeth, 531 Malden Ave., Apt. 302
 ROBERTSON, Clyde V., 4139 12th Ave. N.E.
 ROBERTSON, James, 6006 Latona Ave., ME 8492
 ROBSON, Mrs. Clara A., 910 University St.
 ROGERS, Philip M., 4324 6th Ave. N.E., ME 7775
 ROLLER, Martha, Apt. 4, 911 Lakeview Blvd., CA 4382
 ROLLINS, Eleanor S., Women's University Club, EL 3748
 ROSE, Frances D., Clark Hotel, EL 3922
 ROSENBERG, May, Malden Apts., 1454 E. Harrison, PR 3550
 ROTH, Helen, 3438 Florence Court, PR 1268
 ROUDEBUSH, Elizabeth, Piedmont Hotel, EL 0188
 ROVELSTAD, Richard P., 1011 E. 63rd St., KE 7980
ROWNTREE, Harry, College of Commerce & Journalism, Ohio State University, Columbus, O.
 ROYER, Edgar, Box 87, 351 Stuart Bldg., EL 4477
 RUDDIMAN, Carl F., 1215 Seneca St., EL 0188
 RUDDIMAN, Ronald R., 905 20th Ave., EA 4727
 RUDDY, A. Cicely, 109 N. 46th, ME 7661, or 1416 Alaska Bldg., MA 4605
 RUSTON, W. R., 655 E. 73rd St., KE 0544
 RYDER, Madalene, Stetson Hotel, MA 1272
- SALISBURY, Albert P., 2100 5th Ave., MA 6302
 SANBORN, Lynne J., 444 Crescent Ave., Buffalo, N. Y.
 SCHELLIN, Robert, 410 20th Ave. No., EA 3977
 SCHEUMANN, Roger, 9765 62nd So., RA 0125
 SCHINDLER, F. O. G., R.F.D. 6, Box 46, KE 2720
 SCHNEIDER, Robert, Apt. 1, 318 Orange St., New Haven, Conn.
 SCHNEIDER, Sophie L., Miami Valley Hospital, Dayton, Ohio
 SCHOENFELD, Mary W., 7212 34th Ave. N.W., SU 0345
 SCHOENFELD, Minnie J., 7212 34th Ave. N.W., SU 0345
 SCHOFFMAN, H. A., M.D., 918 Cobb Bldg., EL 4028
 SCHROLL, William C., Box 223, R.F.D. 1, Kent, Wash.
 SCHUBERT, Elsa J., 1807 37th Ave.
 SCHUMAKER, Katherine, 1020 E. Denny Way, EA 9325

- SCOTT, Edith M., 1215 E. Lynn, CA 0166
 SHELTON, Celia D., 2904 Franklin Ave., CA 1475
 SHELTON, Mrs. Leonore D., Shelton, Wash.
 SHELTON, Mary E., 2904 Franklin Ave., CA 1475
 SHEPARDSON, Bertha, Northern Life Bldg., MA 2794
 SHERWOOD, Robert W., 646 Washington Ave., Bremerton, Wash., 586
 SHINN, Helen R., 5240 14th Ave. N.E., KE 0341
 SHORROCK, Harold, 654 W. Highland Drive, GA 0136
 SHORROCK, Paul, 654 W. Highland Drive, GA 0136
 SHRYOCK, Dorothy, 2210 N. 41st St., ME 3911
 SHULTZ, Celia B., 306 Morris St., Renton, Wash.
 SHUMM, Wiley, 1805 11th Ave. W., GA 3514
 SIMKINS, Leslie C., 614 Stimson Bldg., EL 4404
 SIMMONS, Anna, 724 Rose St., GL 0204
SIMMONS, Chas. L., 1404 24th No., EA 7011
 SIPPLE, Maude, 443 Stimson Bldg.
 SIVERTZ, V., Dept. of Chemistry, Univ. of Wash.
 SKINNER, Grace, Queen Anne High School
 SLAUSON, H. L., R. F. D. 11, Box 292, EL 7424; Home, Renton 286-J
 SMAL, Lloyd F., 715 4th Ave., Bethlehem, Pa.
 SMITH, A. E., Box 297, Montesano, Wn.
 SMITH, Ellen Garfield, Public Library, Walla Walla, Wash.
 SMITH, Frances H., Apt. K., 1414 E. Harrison St., CA 5344
 SMITH, Mrs. George A., 6100 W. Spokane St., WE 4801
 SMITH, Ilo M., 208 Northern Life Bldg., MA 9934, or Apt. 301, 1330 Boren, EL 0564
 SMITH, Iva W., 1237 Marguerite, Bremerton, Wash.
 SMITH, Lightner, Piedmont Hotel, EL 0188
SMITH, Oscar J., Arctic Club, MA 4310
 SMITH, Walter W., 4119 Interlake Ave.
 SNYDER, H. F., 1245 Sixth St., Bremerton, Wash., 202-L
 SOLOMON, S. J., Apt. 204, 1809 41st No.
 SONMOR, Josephine, Glencairn Hotel
 SORRELLS, Kenneth, 5147 Creston St.
 SPERLIN, O. B., 4530 16th Ave. N.E., VE 3766
 SPERLIN, Robert, 4530 16th Ave. N.E., VE 3766
 SPIESEKE, Winnie, 1819½ Broadway, EA 1199
 SPRINGER, Alice I., 1510 Westlake
 SQUIRES, Vava, 1020 Seneca
STACKPOLE, Mrs. Everett B., 7037 17th N.E., KE 1795
 STAFFORD, Dorothy, 514 Granada Apts., 1736 Belmont, EA 2415
 STANNARD, H. F., 3318 19th So., RA 2958
 STJEL, Edward T., 747 Burwell Ave., Bremerton, Wash., 1087
 STEMKE, Mary, 1008 6th Ave. No., GA 1289
 STENHOLM, Alice E., Wisconsin State Board of Control, Madison, Wis.
 STEPHENS, Hattie E., P. O. Box 815
 STONEMAN, A. V., The Associated Press, Times Bldg., MA 1605, Nights MA 8867
 STOREY, Ellsworth, 260 Dorffel Drive, EA 4193
 STOREY, Priscilla, 260 Dorffel Drive, EA 4193
 STRANDBERG, A. M., 6141 Arcade Bldg., EL 8579
 STREAMS, Mrs. Henry M., 6310 Ravena Ave.
STREATOR, Gertrude I., 1726 15th Ave., EA 9761.
 STRIZEK, Otto P., 320 Cobb Bldg., EL 3423, or WE 7474
 STRONG, Mrs. Ray Nottingham, 1615 13th Ave., EA 0150
 STUART, Beth, 7510 10th Ave. N.E., KE 7449
 SUNDLING, Doris M., 3807 11th Ave. N.E., ME 4235
 SWANSON, James, P. O. Box 225, Bremerton, Wash., 966-W
 SWANSON, Mrs. James, P. O. Box 225, Bremerton, Wash., 996-W
 SWENSON, H. C., 110 S. Ingalls St., Ann Arbor, Mich.
 TANGNEY, Frank P., 5401 Woodlawn Ave., ME 2480
 TARBILL, Aleda, Marine National Co., 2nd and Spring, EL 1505, Loc. 58
 TAYLOR, Harriet M., 120 N. Washington St., Centralia, Wash., 50-M
 TAYLOR, Jeannette M., 1816 9th Ave. W., GA 3846, or EL 7070
 TEPLLEY, George, 9160 7th Ave. So., GL 1956
 TERNENT, A. J., 1737 Belmont Ave.
 THOMAS, Edgar A., Y. M. C. A., MA 5204
 THOMPSON, Chloe, Duchess Apts., 4009 15th Ave. N.E., ME 7015
 THOMPSON, L. R., P. O. Box 542, MA 7779
 THOMPSON, Maud, 178 35th Ave. No., PR 3269
 THOMSON, Mrs. Elspeth, 906 Summit Ave.
 THOMSON, Hermia, Box 55, Fall City, Wash.
 TODD, C. F., 2605 10th Ave. W., GA 0928
 TODD, Luella, 1005 W. Sixth St., Los Angeles, Calif.
 TOLL, Roger W., Yellowstone Park, Wyo.
 TOMLINSON, O. A., Supt. Mt. Rainier Natl. Park, Ashford, Wash.
 TOVEY, Idylene M., 1630 Boylston Ave., EA 6649
 TREBES, Lieut. John, U. S. S. Chelan, c/o Postmaster, Seattle, Wash.
 TREMPER, Henry S., 816 2nd Ave., MA 1534
 TRIOL, Mrs. E. K., Richmond Beach, Wash.
 TUCKER, W. S., 2832 N. Broadway, CA 2522
 TWEED, Lucile, 2451 First Ave. W., GA 6838
 U'RAN, Lucille, 4547 19th Ave. N.E., KE 4312
 VANDEWALL, Ralph I., 1122 Medical Dental Bldg., MA 1431
 VAN NUYS, Elsie, 6502 Phinney Ave., SU 8104
 VAN NUYS, Thelma, 6502 Phinney Ave., SU 8104
 VENNEKOHL, Ernst A., 2521 Minor Ave. No., EL 1708
 VERNIER, S. K., Dexter Horton National Bank
 VETTER, Elna Allen, 4043 8th Ave. N.E., ME 2509
 VIETH, Zela, Clark Hotel, EL 3922
 VIK, K. J., 7514 27th Ave. N.W.
 VINING, Maurice N., 1419 8th Ave. W., GA 7140
 VOLL, Otto, Manette, Wash., 254-L

- WAGENHURST, Edna, 1629 Harvard Ave.
- WAGNER, A. Carl, 1101 Northern Life Tower, SE 1415
- WAGNER, Dr. J. Arnold, 318 Cobb Bldg., FL 0030
- WALKER, A. Martha, 2700 Highland Ave., P. O. Box 203, Route 1, Manhattan Beach, Calif.
- WALKER, Harriet K., 619 Belmont Ave. No., CA 5640
- WALKINSHAW, Robert B., 1408 Hoge Bldg.
- WALLER, Florence M., 1705 Belmont, MA 3995
- WALSH, Mrs. Stuart P., 826 37th Ave., PR 1305
- WALWORTH, Fred E., 2616 15th Ave. W., GA 8567
- WANAMAKER, E. L., 1717 Belmont Ave.
- WARE, Harold D., 5110 Arcade Bldg., EL 5707
- WASCHER, Kathryn, 4608 Meridian Ave., ME 2753
- WATKINS, Hattie, 1932 Queen Anne
- WATT, E. Marjorie, 620 Olympic Place, GA 0296
- WEER, John Henry, 206 Massachusetts Ave., Boston, Mass.
- WELLS, Ruth B., Piedmont Hotel, EL 0188
- WELSHONS, Olta, 810 Alaska Bldg., EL 6253
- WERBY, Mamie, 216 Third Ave. No., GA 2101
- WEST, Hubert**, 6532 Seward Park Ave., EL 7200
- WHALLEY, Isabel, 3323 Hunter Blvd., RA 5327
- WHITTED, Houghton H., 933 17th Ave. No., EA 3375
- WHITAKER, C. B., P. O. Box 691
- WHITWORTH, Isobel F., 3444 Beach Drive, WE 3555
- WILKE, Helen, 310 White Bldg., EL 2446
- WILLIAMS, Agnes Bell, 516 Ninth St., Bremerton, Wash.
- WILLIAMS, Dr. Geo. T., 1100 Cobb Bldg., MA 5787
- WILLIAMS, Theresa M., 4457 38th S.W., WE 3194
- WILLIS, Cecil, 1231 Eighth Ave. W., GA 2726
- WILLIS, Ellen, Assembly Hotel
- WILSON, Geo. S., 4114 10th Ave. N.E.
- WILSON, Gladys, The Biltmore
- WILSON, Horace A., 431 Lyon Bldg., EL 1340
- WILSON, Jane, 9006 Fauntleroy Ave., WE 3722
- WILSON, June, 1729 36th Ave. So., BE 4156
- WILSON, Ruth K., 1448 E. 67th Place, Chicago, Ill., Hyde Park 5377
- WINDER, Arthur R., 8914 Woodland Park Ave., KE 7005
- WINN, Ralph E., 2517 10th Ave. W., GA 3261
- WINSHIP, Florence S., Room 1025, I. W. A. C., 111 E. Pearson St., Chicago, Ill.
- WINSLOW, Catharine, 920 College, Beloit College, Beloit, Wis.
- WOLCOTT, Mary G., 4009 15th N.E., Duchess Apts.
- WOLFE, Harry K., 2115 E. 55th St., KE 0471
- WOLFE, Katharine A., 2115 E. 55th St., KE 0471
- WOOLERY, Velmaleta, Brown Apts., 181 14th, Portland, Ore., BE 4668
- WORTHAM, James, 1248 22nd Ave. No., EA 2429
- WRIGHT, Francis E., 904 21st Ave. No., EA 1280
- WRIGHT, Mrs. George E., 1227 38th Ave. No., EA 5420
- WRIGHT, Marie R., 904 21st Ave. No., EA 1280
- WRIGHT, Martin A., 904 21st Ave. No., EA 1280
- WRIGHT, Rebecca W., 19 Baldwin St., Montpelier, Vt.
- WUNDERLING, Herman P., Box 343, EL 0764
- WUNDERLING, Mrs. H. P.**, Box 343
- YOUNG, Arthur, Clark Hotel, EL 3922, or MA 4635
- YOUNG, G. Wendell, Clark Hotel, EL 3922
- YOUNGER, Margaret Meany, 1233 E. 88th St., KE 3810
- ZABELLE, Eugenie, Apt. 201, McKenna, Renton, Wash., phone 85-W
- ZIMMERMAN, Frances, 1901 Vallejo, Apt. No. 2, San Francisco, Calif.

TACOMA

(Place is Tacoma unless otherwise stated.)

- ANDERSON, Mrs. Claude J., 1121 S. Ninth St., Broadway 2813
- BABARE, George, Day Island, Proctor 230
- BACKUS, Evelyn, 1701 N. Steel St., Main 8103
- BARNES, Mary, Ingleside Apts., Main 8126
- BARRY, Mrs. Cornelius, 9th St. & 9th Ave. S.E., Puyallup, Wash., 1534
- BASSETT, A. H., 1902 No. Prospect, Proctor 1832
- BECK, Edith C., 1110 E. 62nd St., Madison 5160
- BENJAMIN, Rial, Jr., 2110 No. Alder, Proctor 3488-J
- BILLINGS, Mrs. M. E., 205 No. Tacoma Ave., Main 6832
- BILLINGS, Prudence, 2652 Larkin, San Francisco, Calif.
- BLAIR, Homer O., 524 No. Cushman Ave., Main 6355
- BRECKENRIDGE, Faye, Eagle Gorge, Wash.
- BREWER, Robert, R.F.D. No. 1, Box 191
- BROENKOW, Mrs. Wm. C., 1307 Puget Sound Bank Bldg., Main 1611
- BROWNE, Chas. B., 2917 South K St.
- BURROWS, Robert B., 711 Market St.
- CAMERON, Crissie**, 805 North J St.
- CLAUSSEN, Elsie, Gig Harbor, Wash.
- CRAIG, Lois D., 6906 S. Mason
- CRAIG, Mildred, 6906 S. Mason
- CRAPSER, Anna H.**, 711 North L St., Main 6080
- CRAWFORD, Emily A., 323 So. J St., Main 5224
- CRIM, Katherine, St. Helens Apts., Main 5947
- DAVIES, Violet, 2801 N. Proctor, Proctor 2526
- DENMAN, A. H.**, 1518 Puget Sound Bank Bldg., Main 7505

- DODGE, Florence F.**, 5201 S. I St., Madison 914-J
DOMRESE, Lillian, 617 No. Starr St., Main 5753
DOWNING, Mont J., 3625 South G St., Madison 439
EDWARDS, Helen, 4408 N. Stevens, Proctor 334
FELLOWS, Mabel E., Puyallup, Wash., 342
FRASER, Alice, 4015 N. 25th St., Proctor 3451-R
GALLAGHER, John F., Dash Point, Wash., Main 1015
GALLAGHER, Leo, Rainier, Ore.
GARNER, Clarence A., 1741 So. Oakes St., Main 8646-R
HALLIN, Ruth M., Day Island, Wash.
HAND, Amos W., 1942 So. E. St., Main 2646
HAND, Elsie M., 1942 Fawcett Ave., Main 2646
HAYDEN, E. M., 523 Tacoma Bldg., Main 7546
HAYWARD, Clare, 31 Mason Road, Bishopstrop, Bristol, England
HELLIG, Mrs. Mary Mudgett, 3001 N. 29th St., Proctor 2490
HERMANS, Christine, 1113 8th Ave. N.W., Puyallup, Wash., Red 192, or (Tacoma) Main 3192
HINCKLEY, Loretta, 2408 N. Washington, Proctor 2333
KELLENBERGER, A. G., 3502 So. 11th St., Main 293
KEMP, J. S., 6600 Alaska Ave., Main 1047
KILMER, Charles, 821 S. Sheridan
KILMER, W. W., 821 S. Sheridan
KIZER, R. B., 4522 N. 16th St.
KNUDSEN, Hans, 1531 S. 42nd St.
LILLY, Jessie I., 417 North L St.
LIND, T. A., 3717 N. 21st St., Proctor 3228-J
LINDENBERG, Ella, 416 W. Main St., Puyallup, Wash.
LITTLE, Walter S., 2121 No. Washington St., Proctor 2338-J
LITTLE, Willard G., 2219 N. Washington Ave., Prospect 589
MACEK, Mary, 1540 Market St., Main 293
MARTIN, E. B., 312½ So. K St., Main 8331-R
MARTIN, Mrs. Norma, 3319½ Pacific Ave.
McCULLOCH, Annie Laurie, 315 No. G St.
MELLIISH, Maxine V., Sumner, Wash.
- MILLS, Col. M. D.**, 408 Baldwin Ave., Birmingham, Mich.
MORRISON, Hazel E., 1501 S. Washington St., Proctor 2630
MURRAY, Etha, 4508 No. Huson
NORMAN, Percy A., 3131 E. K St., Main 7134
PETERSON, Franklin C., Box 214, Mills, New Mexico
PORTMANN, Frieda, 636 Whitman, Walla Walla, Wash.
PUDOR, O. M., Puyallup, Wash., 1279
REEVE, W. J., 3024 Pacific Ave., Main 7306
RICE, George A., Route 3, Box 360, Puyallup, Wash.
ROBERTS, Dana, 609 N. 9th
SCHENCK, Fred B., Route 6, Box 162 A, Main 6168
SCHOLLES, Josephine T., 411 No. M St., Main 5727
SCHOLLES, Stella, 411 No. M St., Main 5727
SCOTT, Clara A., 301 No. Tacoma Ave.
SEABURY, Catherine, 3810 No. Washington St., Proctor 2972
SEYMOUR, W. W., 423-24 Tacoma Bldg., Main 6350 (Deceased)
SHOUDY, Helen, 4555 15th Ave. N.E., Seattle, Wash.
SIMMONDS, Eva, 311 So. 9th St., Main 1067
SMITH, Earle D., 3633 So. M St., Madison 649
SPERRY, Clarence E., 251 W. Rittenhouse, Philadelphia, Pa.
STRYKER, Mabel B., 3419 North Ferdinand
SWARTZ, Verrol, Route 5, Box 528, Proctor 2704-L
SWIFT, Dorothy, 3717 N. 29th St., Proctor 3466-J
TUGBY, E. E., 1206 No. Alder St., Main 1055
TURNER, Winnifred, 1014 E. 34th St., Seattle, Wash.
WHITACRE, H. J., 1403 Washington Bldg.
WHITACRE, Mrs. Horace J., 3803 No. Monroe
WHITMORE, Julia, Culp Apts., 47th & 15th N.E., Seattle, Wash.
WHITMORE, Pearle R., Culp Apts., 47th & 15th N.E., Seattle, Wash.
WRIGHT, Stacy C., 824 No. K St., Main 3758
YOUNG, Clarence M., Rainier, Ore.
YOUNG, Ethel M., 1713 No. Prospect, Proctor 1090
YOUNG, Margaret S., 1713 No. Prospect St., Proctor 1090

EVERETT

(Place in Everett unless otherwise stated.)

- ALBERT, Bruce**, 3421 Tulalip Ave., Black 626
ANDERSON, Ruth, Monte Cristo Hotel
ARMANTROUT, C. E., 2100 East Speedway, Tucson, Ariz.
ASHTON, Dean, The Herald, Main 351
BAILEY, Arthur, Monroe, Wash.
BAILEY, Bernice E., Bell's Court, Blue 612
BENSON, Mrs. Naomi A., 2531 E. Grand Everett, Wash.
BERNARDS, Margaret M., 1014 66th St. No., Seattle, Wash.
CADY, Vernon E., Post Office, Black 582
CHURCH, Geo. A., 3009 Hoyt Ave., Main 1010
CLARK, Whit H., Monroe, Wash.
COCKBURN, C. G., Lake Stevens, East 600
COLLINS, Opal H., 2415 Rucker Ave.
COOK, Jeanette, 105 W. Fern Ave., Redlands, Calif.
CRAYTON, Catherine, 2414 Hoyt Ave., White 955
CROGSTAD, Alvina, 1707 Rucker Ave.
EDWARDS, Flora M., 1301 Wetmore Ave., White 1812
ELLIFF, Inez, 2332 Hoyt Ave., Red 1474

- ERIKSEN, Walter, 1611 24th St., White 1077
 FARRELL, Margaret, 3207 Maple St., White 1977
 FLOCK, Mabel, 4123 Eastern Ave., Seattle, Wash.
 FOLKINS, Margaret E., 2129 Rucker Ave.
 GASKILL, Paul, Y. M. C. A., Main 120
 GLEASON, Hildred, 2519 Grand Ave.
 GOLDBERG, B., 3315 Hoyt Ave, White 1083
 HERTZ, Stuart B., 2111 Rucker Ave., Black 439
HINMAN, H. B., 320 Stokes Bldg., Main 301
 HUDSON, Mabel C., 2032 Wetmore Ave., Black 639
 INGALLS, C. A., Y. M. C. A., Main 120
 JENKIN, Clara, 4126 Wetmore Ave., Blue 1081
JENKIN, ELLEN, 4126 Wetmore Ave., Blue 1081
JETER, Thos., Citizens Security Natl. Bank, Black 50
 LEHMANN, Christian H., 2916 State St., Main 187
 LEHMANN, J. F., 3527 Hoyt Ave., Red 982
 LINDH, Mrs. Nels G., Route 3, Port Townsend, Wash.
 LOVE, Harry D., 1306 Rockefeller Ave., Blue 1234
 LUCUS, Helen, 2232 Hoyt Ave., Red 1272
 MADDEN, A. J., 3301 Norton Ave., Red 1593
 MARLATT, Mrs. Stella, 2406 Hoyt Ave., Black 1429
McBAIN, Mabel E., Windsor Apts., Red 921
 McLEOD, Harry H., 2221 Rucker Ave., Blue 1272
 MELLEMA, Alice, 2332 Hoyt Ave., Red 1474
 MELVIN, Belle, 1221 Colby, Black 128
 MOORE, Hattie F., R.F.D. Box 33-A, Lowell, Wash.
 MORK, Claudia, Bell's Court, Blue 612
 NICHOLAS, Mrs. Winifred, Box 344, Monroe, Wash.
 OSBORN, H. Lee, R.F.D. No. 2, Box 154, Monroe, Wash
 RANDALL, Margaret, 2232 Hoyt Ave., Red 1272
 RHODE, Ellis G., 111 Loma Alta, Los Gatos, Calif.
 RIGGS, Earnestine, 2220 Cascade View, Blue 1115
 RUCKER, W. J., Lake Stevens, Wash.
 RUMBALGH, O. A., 1612 25th St., Red 1182
 SHELDEN, C G., 1431 Grand Ave., Black 1173
 SMITH, Marvin W., 419 Commerce Bldg.
 STARBIRD, Fay, 2519 Grand Ave., Blue 1251
 TAYLOR, Jane E., Windsor Apts., Blue 82
 THOMPSON, Evaline H., 2607 Everett Ave., Main 151-R
 THOMPSON, Geo. D., Granite Falls, Wash.
THOMPSON, Nan, No. 4, Madrona Apts., Red 562
TORGERSON. O. A., Citizens Security National Bank, Black 50
 VARLEY, J. A., 832 Hoyt Ave., Blue 1336
 WELLES, Kathryn, 2232 Hoyt Ave., Blue 708
 WYCOFF, Ethel, No. 20 Edison Apts.
 YEAKEL, Nirom J., R.F.D. No. 1, Snohomish, Wash.

for Christmas

why not give a

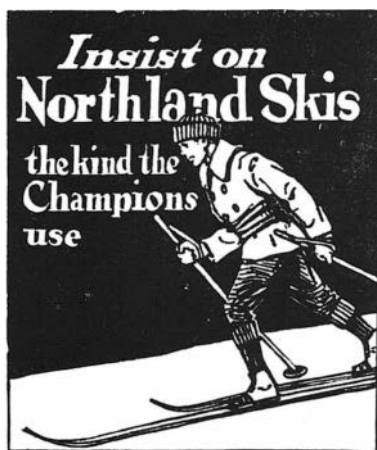
Membership

in

The Mountaineers?

Norwegian Skiing Equipment

skis, poles, wax, harness, wool sox, and ties



Ask any of our Mountaineer friends who have bought Norwegian equipment here. Reasonable prices on everything.

Besides our imported line, we stock the best American made equipment, the well-known
NORTHLAND SKIS

**UNIVERSITY
BOOK STORE**

4326-28 University Way

Almost as Important as St. Nicholas



Fisher's Blend Brand Flour plays an important role in making Merry Christmases merrier.

Because of its multi-purpose feature, it is used in hundreds upon hundreds of jolly plum puddings, fancy cakes, cookies, fruit cakes, layer cakes, tarts . . . for Christmas dinner rolls . . . for Christmas breakfast muffins, waffles or hot cakes.

By the way . . . how's your supply? Better put Fisher's Blend on your Christmas shopping list.

Fisher's
**BLEND
BRAND
FLOUR**

TUNE IN ON KOMO

Protection in Severest Weather

Filson Better Outdoor Clothes are wind-proof and shed a lot of water. They're designed especially for outdoor needs. Mountaineers will find these garments especially to their liking. Lots of convenient pockets to take care of food and all the other intimate little things that add so much to the pleasure of the outing. Come in and let us demonstrate how well we can supply your wants. You're welcome whether you purchase or not.



C. C. FILSON CO.

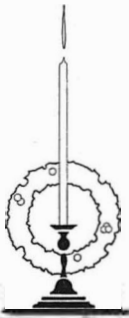
First at Madison Seattle, Washington

"Might as Well Have the Best"

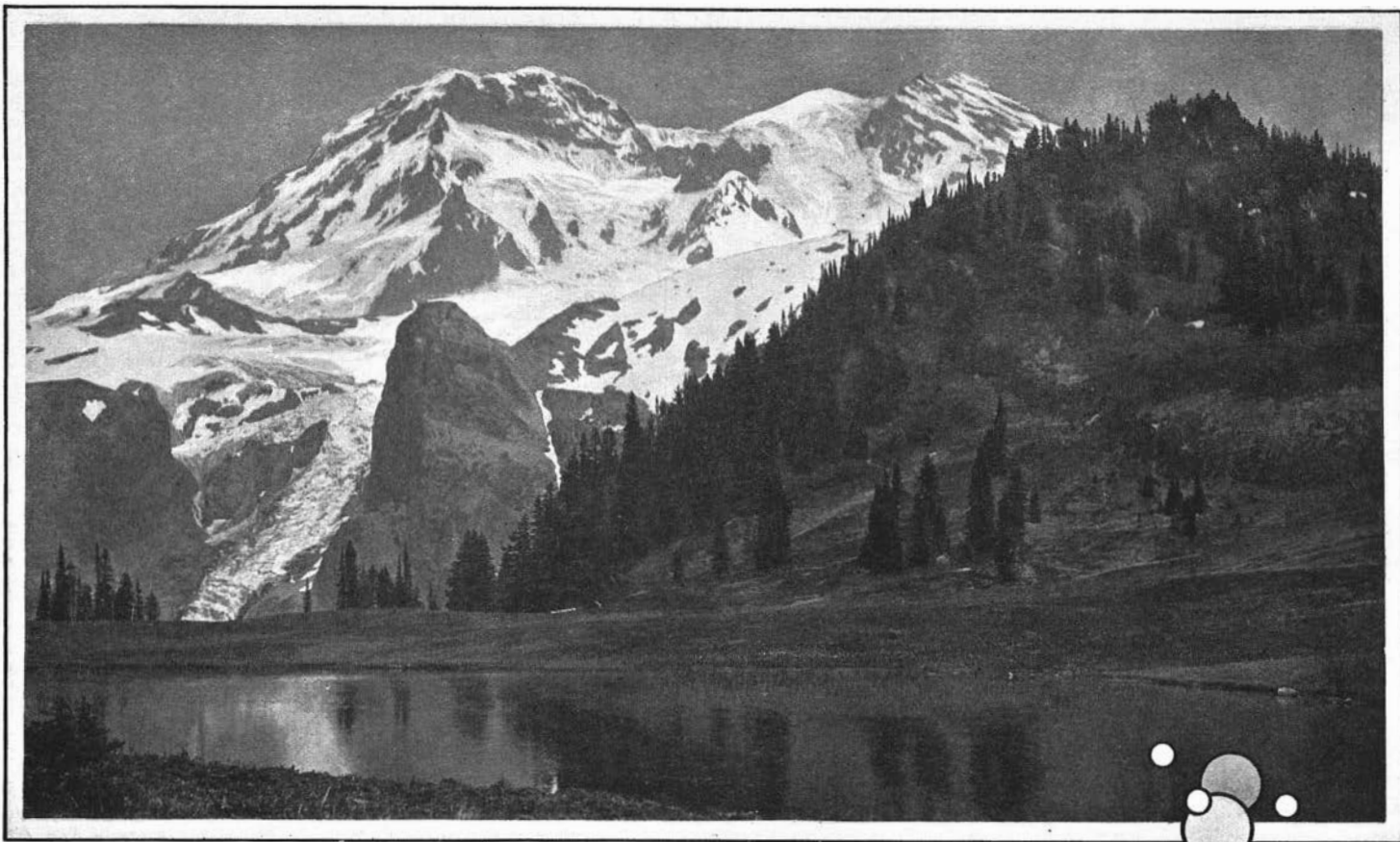
Filson Khaki Cruising Coat.

Also made in Forestry Cloth.
(Only one garment of an exclusive line for outdoor lovers.)

Compliments of the Season



Western Printing Company
2100 Fifth Avenue, Seattle



MOUNT RAINIER FROM KLAPATCHE PARK

Showing the west side of the Mountain, the Puyallup Glacier, and Aurora Peak. The favorite camp-site of the 1924 outing was declared to be in Klapatche Park. The Park will be visited on the 1930 Outing.

A. H. Denman



From Gresvig of Norway—Ski Cap, \$3.50;
Ski Blouse, \$15; Ski
Breeches \$13.50;
Hickory Skis, \$19.50

FREDERICK & NELSON

recognizes skiing as an important part of the year's sports calendar. Accordingly, we have assembled from preferred domestic and Norwegian sources wide selections of practical ski clothes for men and women—breeches, sweaters, caps, mittens, scarfs, shoes, blouses; and the right equipment—skis, ski poles, bindings, wax.

Women's Ski Clothes

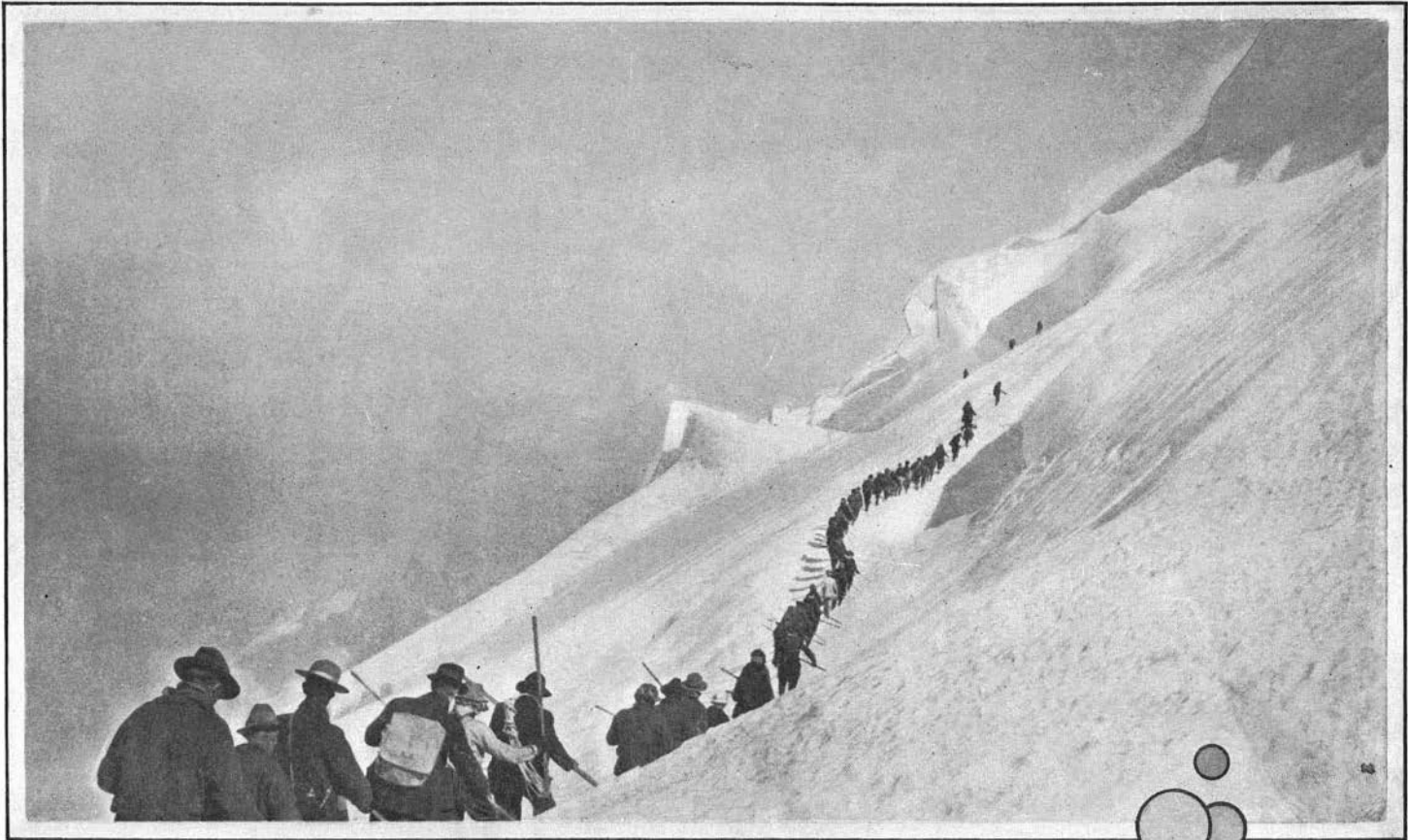
Sports Shop, Second Floor,
Frederick & Nelson

Men's Ski Clothes

Golf Shop, Third Floor,
Frederick & Nelson

Ski Equipment

Golf Shop, Third Floor,
Frederick & Nelson



MOUNTAINEERS CLIMBING MOUNT RAINIER IN 1915

The party is in close company formation with scouts ahead kicking steps. Fifty-seven reached the summit on the east side of the Mountain via the Upper Enmons Glacier. The 1930 Outing will follow this route.

J. M. Gould



When holiday feasts make the finest quality in all things indispensable—remember *Frye's* products. The name has been synonymous for years upon years in the Northwest . . . the Frye label a "written guarantee" of satisfaction.

You can depend upon it on the most important festive occasions.

FRYE'S

DELICIOUS BRAND HAM
 DELICIOUS BRAND BACON
 WILD ROSE LARD
 BABY BEEF

"Everything the Name Implies"

Gifts...

for Christmas

KODAKS
 CINE' KODAKS
 FRAMED VIEWS
 ZEISS BINOCULARS
 KODAK ACCESSORIES
 —and—
 GIFT DRESSINGS

*Shop Here and Avoid
 the Uptown Mobs*



T. J. O'Neil

TAILOR

To Men and Women



Room 210 McDowall Bldg.

Phone: MAin 4029

SEATTLE



OTTO ARLBBLAD, Cutter

Norwegian, Swiss and American Equipment for
WINTER SPORTS

**Skis, Snowshoes
 Toboggans**



**Northland
 Skis**

Cross Country
 Ridge Top
 Jumping
 —All Lengths in
 Hickory and Ash

Strand Skis

In Ash
 and Hickory.
 Both First and
 Second Quality

**Penobscot
 Snowshoes**

Beavertail
 Bear Paw
 Pear Shape
 Canadian Trapper
 —All First Quality

Ski Wax

Ostsbye medium, mix,
 Klister and Skares-
 mering.
 Nansen, Strand, and
 Northland



We Feature the Famous Haug Bindings

Look Over Our
 Snowshoe Moccasins
 Ski Boots
 Hiking Boots
 Hiking Paccs

Sta Dri Parkas
 Golf Slickers
 Water Repellent
 Clothing
 Knit Caps
 Rain Hats

**Mountain
 Climbing
 Equipment**

Ice Axes
 Alpine Rope
 Alpenstocks
 Tricouni Nails
 Edge Nails
 Etc.

Sleeping Bags
 Waterproof Cover
 Bergan Packs
 Nelson Packs
 Burr Packs

Wool Gloves
 Wool Mitts
 Wool Sox
 Wool Breeches
 Wool Shirts
 Wool Coats

**717
 First Avenue**



**Phone
 ELiot 8165**

