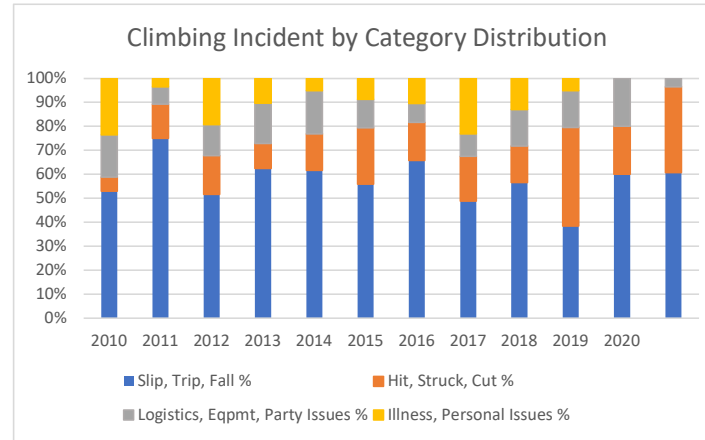
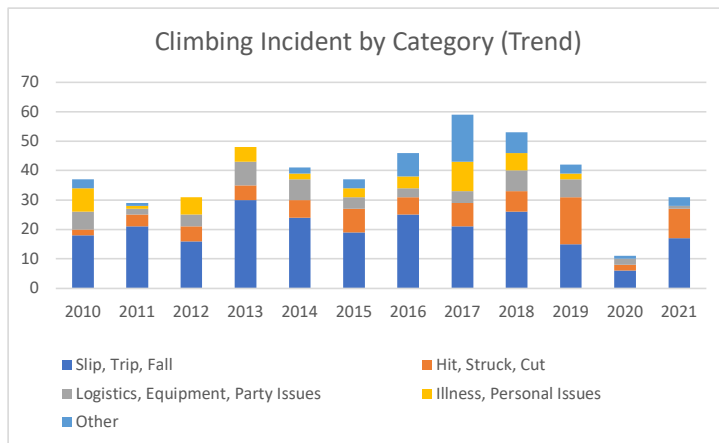


Climbing Incidents by Category

Through Dec 2021

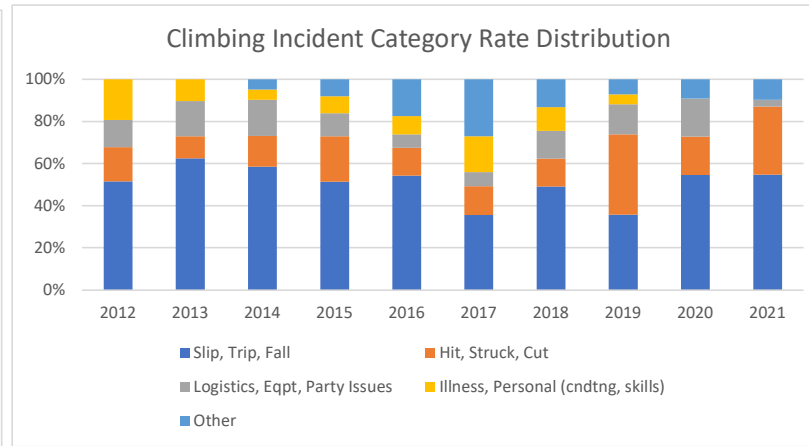
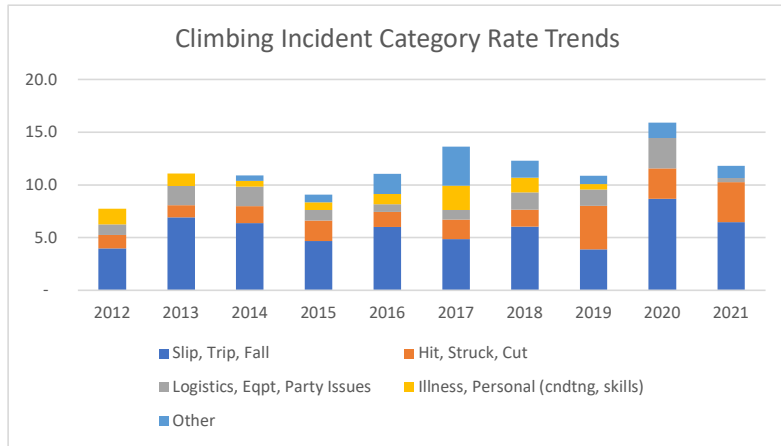
	2010	2011	2012	2013	2014	2015	2016	2017	2018	2019	2020	2021
Slip, Trip, Fall	18	21	16	30	24	19	25	21	26	15	6	17
Hit, Struck, Cut	2	4	5	5	6	8	6	8	7	16	2	10
Logistics, Equipment, Party Issues	6	2	4	8	7	4	3	4	7	6	2	1
Illness, Personal Issues	8	1	6	5	2	3	4	10	6	2	0	0
Other	3	1	0	0	2	3	8	16	7	3	1	3
Total	37	29	31	48	41	37	46	59	53	42	11	31
Slip, Trip, Fall %	49%	72%	52%	63%	59%	51%	54%	36%	49%	36%	55%	55%
Hit, Struck, Cut %	5%	14%	16%	10%	15%	22%	13%	14%	13%	38%	18%	32%
Logistics, Eqpmt, Party Issues %	16%	7%	13%	17%	17%	11%	7%	7%	13%	14%	18%	3%
Illness, Personal Issues %	22%	3%	19%	10%	5%	8%	9%	17%	11%	5%	0%	0%



Climbing Incident Rates by Category

Through Dec 2021

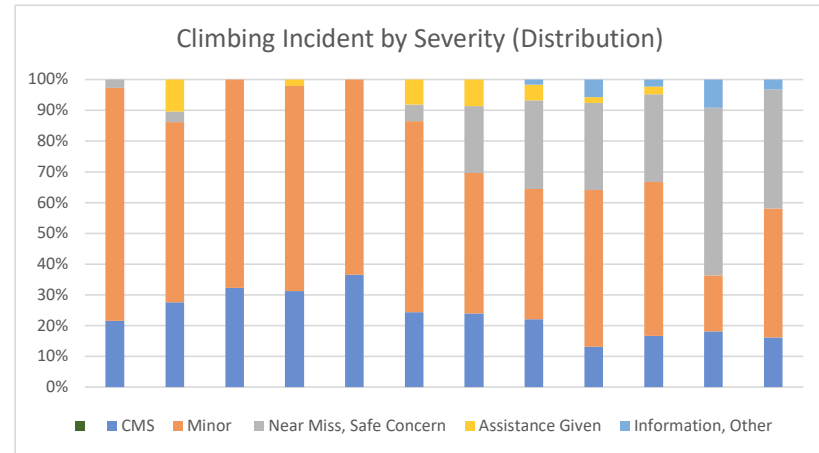
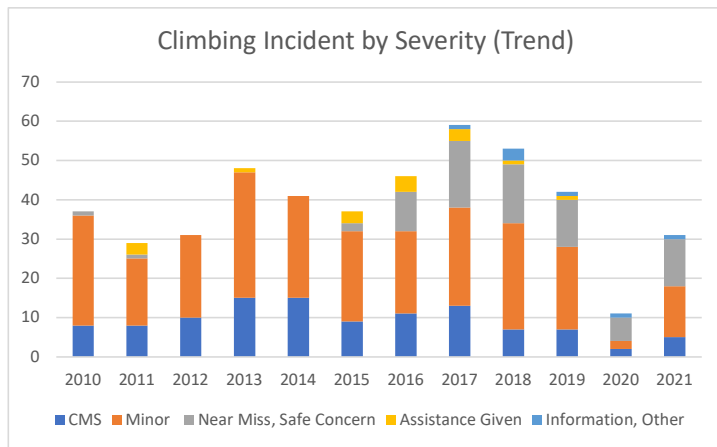
	2012	2013	2014	2015	2016	2017	2018	2019	2020	2021
Slip, Trip, Fall	4.0	6.9	6.4	4.7	6.0	4.8	6.0	3.9	8.7	6.5
Hit, Struck, Cut	1.2	1.2	1.6	2.0	1.4	1.8	1.6	4.1	2.9	3.8
Logistics, Eqpt, Party Issues	1.0	1.8	1.9	1.0	0.7	0.9	1.6	1.6	2.9	0.4
Illness, Personal (cndtng, skills)	1.5	1.2	0.5	0.7	1.0	2.3	1.4	0.5	-	-
Other	-	-	0.5	0.7	1.9	3.7	1.6	0.8	1.4	1.1
Total	7.7	11.1	10.9	9.1	11.1	13.6	12.3	10.9	15.9	11.8
Slip, Trip, Fall	52%	63%	59%	51%	54%	36%	49%	36%	55%	55%
Hit, Struck, Cut	16%	10%	15%	22%	13%	14%	13%	38%	18%	32%
Logistics, Eqpt, Party Issues	13%	17%	17%	11%	7%	7%	13%	14%	18%	3%
Illness, Personal (cndtng, skills)	19%	10%	5%	8%	9%	17%	11%	5%	0%	0%
Other	0%	0%	5%	8%	17%	27%	13%	7%	9%	10%



Climbing Incidents by Severity

Through Dec 2021

	2010	2011	2012	2013	2014	2015	2016	2017	2018	2019	2020	2021
CMS	8	8	10	15	15	9	11	13	7	7	2	5
Minor	28	17	21	32	26	23	21	25	27	21	2	13
Near Miss, Safe Concern	1	1	0	0	0	2	10	17	15	12	6	12
Assistance Given	0	3	0	1	0	3	4	3	1	1	0	0
Information, Other	0	0	0	0	0	0	0	1	3	1	1	1
Total	37	29	31	48	41	37	46	59	53	42	11	31
CMS %	22%	28%	32%	31%	37%	24%	24%	22%	13%	17%	18%	16%
Minor %	76%	59%	68%	67%	63%	62%	46%	42%	51%	50%	18%	42%
Near Miss, Safety Concern %	3%	3%	0%	0%	0%	5%	22%	29%	28%	29%	55%	39%
Assistance Given %	0%	10%	0%	2%	0%	8%	9%	5%	2%	2%	0%	0%
Information, Other %	0%	0%	0%	0%	0%	0%	0%	2%	6%	2%	9%	3%



Climbing Incident Rates by Severity

Through Dec 2021

	2012	2013	2014	2015	2016	2017	2018	2019	2020	2021
CMS	2.5	3.5	4.0	2.2	2.6	3.0	1.6	1.8	2.9	1.9
Minor	5.2	7.4	6.9	5.7	5.0	5.8	6.3	5.4	2.9	4.9
Near Miss, Safety Concern	-	-	-	0.5	2.4	3.9	3.5	3.1	8.7	4.6
Assistance Given	-	0.2	-	0.7	1.0	0.7	0.2	0.3	-	-
Information, Other	-	-	-	-	-	0.2	0.7	0.3	1.4	0.4
Total	7.7	11.1	10.9	9.1	11.1	13.6	12.3	10.9	15.9	11.8
CMS	32%	31%	37%	24%	24%	22%	13%	17%	18%	16%
Minor	68%	67%	63%	62%	46%	42%	51%	50%	18%	42%
Near Miss, Safety Concern	0%	0%	0%	5%	22%	29%	28%	29%	55%	39%
Assistance Given	0%	2%	0%	8%	9%	5%	2%	2%	0%	0%
Information, Other	0%	0%	0%	0%	0%	2%	6%	2%	9%	3%

