

National Park Service  
U.S. Department of the Interior  
Mount Rainier National Park



# Visitor Use Management Initiatives

The Mountaineers Leadership Conference 2019

EXPERIENCE YOUR AMERICA

# Visitor Use Management:

Strategies and actions to provide sustainable access to lands and waters.

- ❖ Identify desired conditions for resources, visitor experiences and opportunities
- ❖ Gain an understanding of how visitor use influences achievement of those goals
- ❖ Commit to active / adaptive management and monitoring of visitor use to meet those goals.

# Nisqually Corridor Plan:

- ❖ Preliminary Planning Process initiated fall 2019

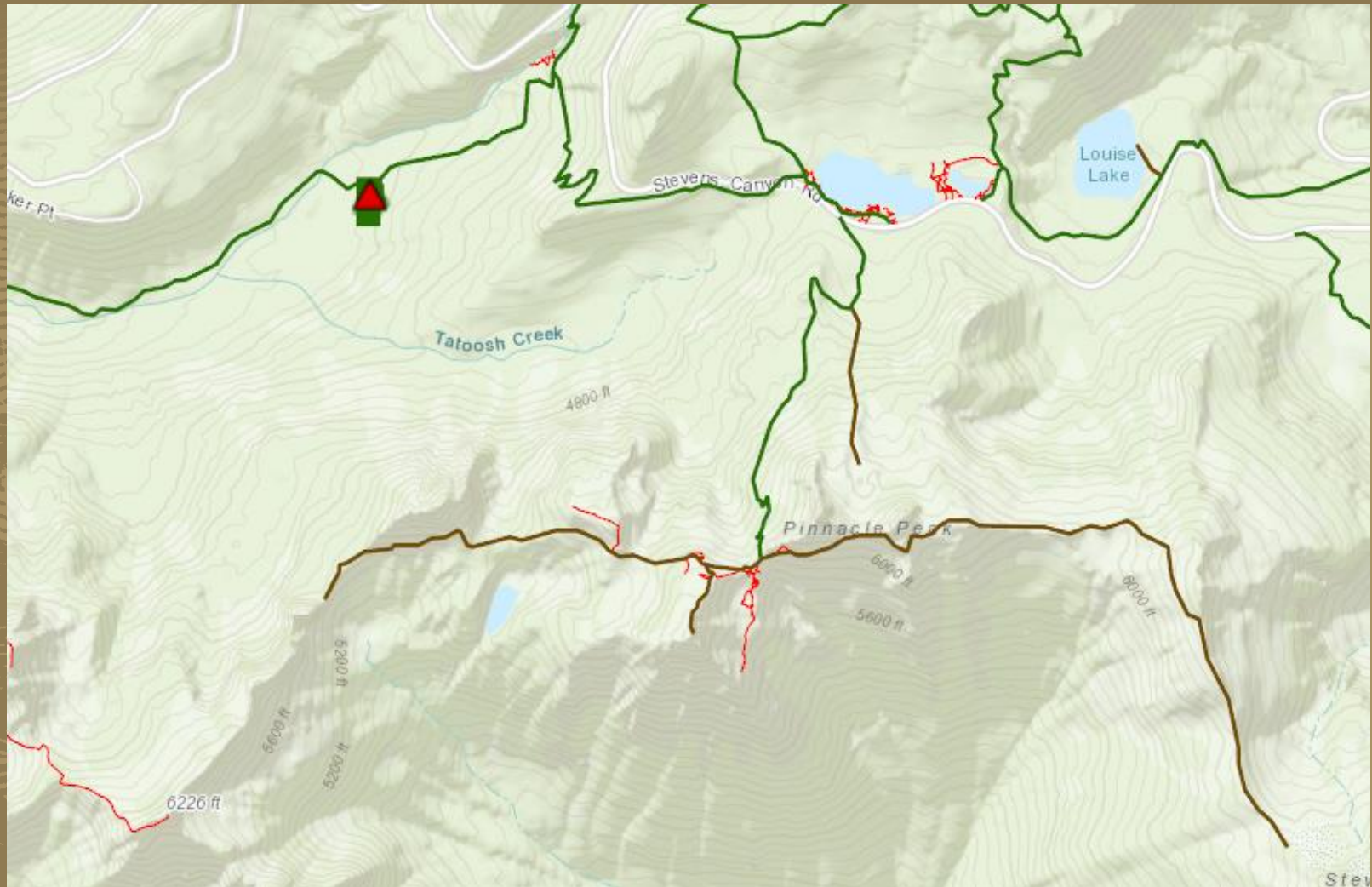
Focus on:

- ❖ Congestion, transportation, and visitor information
- ❖ Historic properties (roads, bridges, vistas, etc)
- ❖ Paradise Meadows
- ❖ Visitor experience on wilderness trails

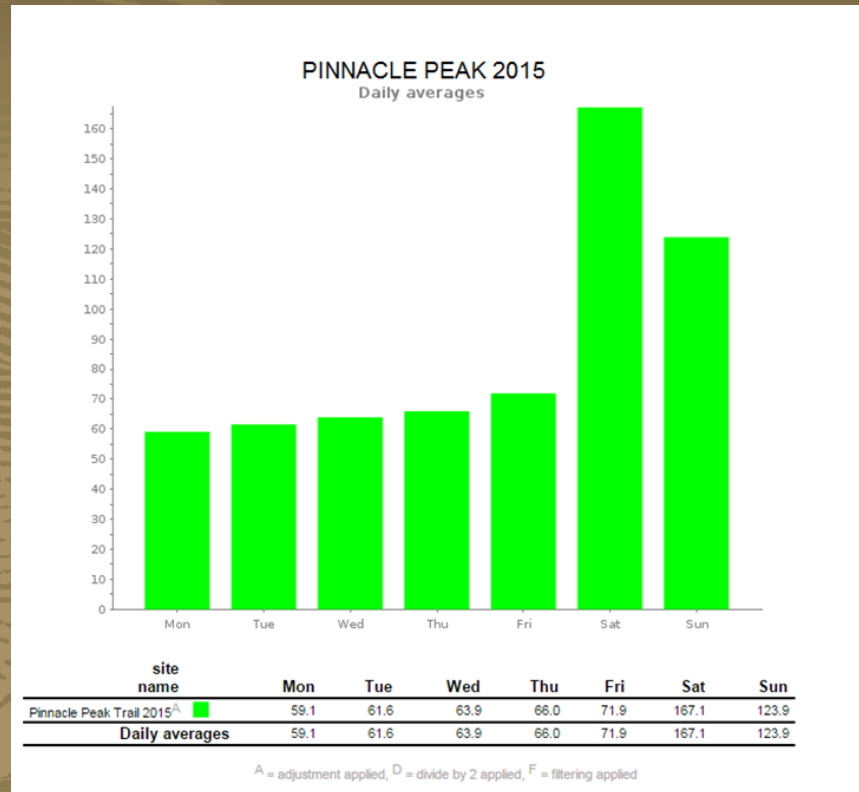
# Spotlight on: Tatoosh Range

- ❖ Wilderness
- ❖ Commercial Free Zone
- ❖ Research Natural Area
- ❖ “Primitive” zone designation

# Current Conditions



# Current Conditions – Pinnacle Peak Trail



Encounters/hr	Maximum	Minimum	Average
Weekday	42	2	16
Weekend	68	6	31

# Current Conditions

“I climbed the Castle in the Tatoosh this past Saturday with two friends. En route I saw at least three groups of Mountaineers practicing skills in the bowl below Pinnacle. One of them looked to be a group of 15. It was somewhat difficult to tell as another group (<12) was nearby and third group of around 8 was milling about, too.

“There was also at least one group of Mazamas climbing the Pinnacle, with another group of independents there, and a church group of 12 and independent group of 4 climbing the Castle.”

# Organized Recreation

- ❖ How does organized recreation affect visitor experience?
- ❖ How are commercial trips, organized recreation, and fee-based recreational courses similar?
- ❖ What strategies are appropriate for promoting and protecting different visitor experiences?



# Guiding principles:

- ❖ Recognize the valuable stewardship role of outdoor clubs and organizations
- ❖ Ensure a wide range of recreational experiences for the public
- ❖ Avoid unintended consequences

# How can the Mountaineers Help?

- ❖ Share information
- ❖ Avoid peak periods
- ❖ Manage party sizes
- ❖ Leave No Trace





# Anchor Management

- ❖ What is the Mountaineers' role in fixed anchor management?
- ❖ What anchor ethic is conveyed in Mountaineers courses?
- ❖ What is the cultural practice around removing old anchors?

# Leave No Trace

- ❖ How many anchors should we find on a third or fourth class peak in Mt Rainier's wilderness?
- ❖ If you wouldn't use it, remove it!

# Mount Rainier National Park



National Park Service  
U.S. Department of the Interior

EXPERIENCE YOUR AMERICA