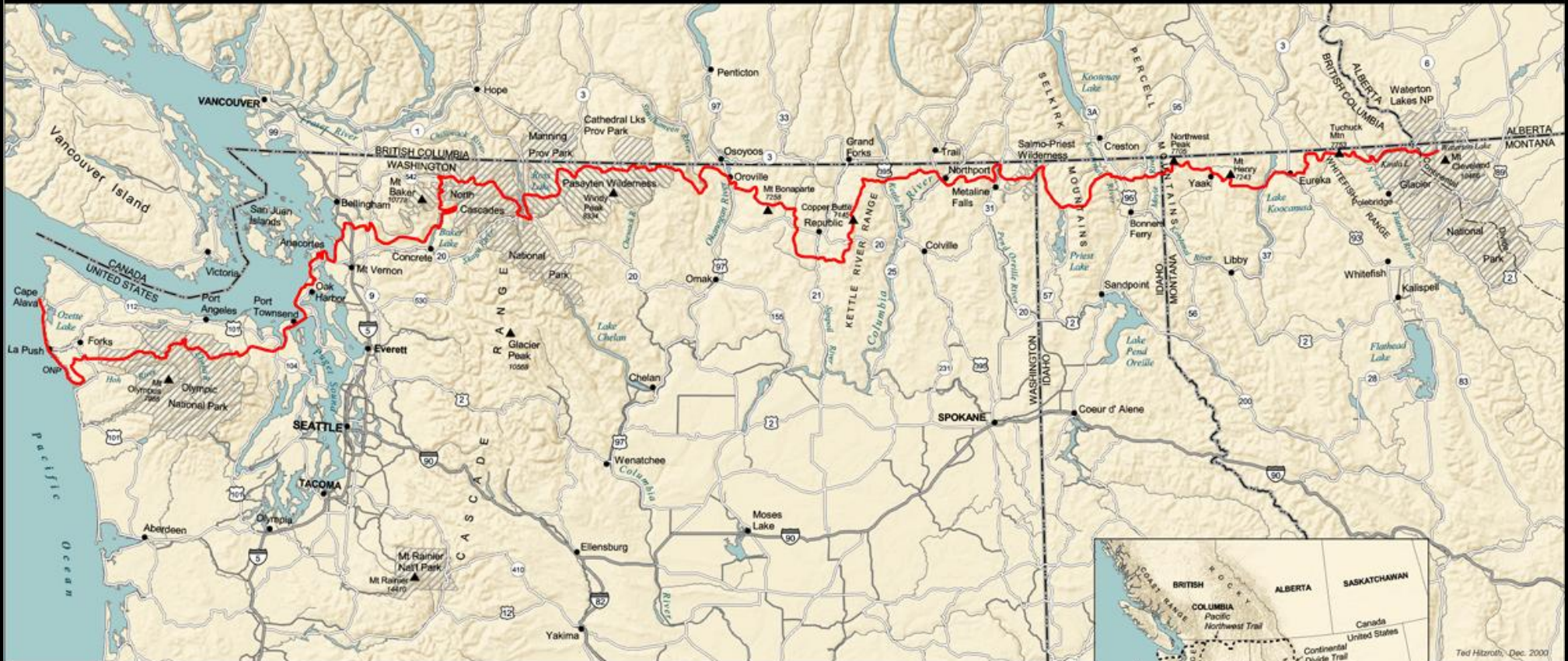


# Hiking the Pacific Northwest Trail

by Brian Lewis

# The Pacific Northwest Trail



- |   |   |
|---|---|
|  Pacific Northwest Trail  |  National or Provincial Park |
|  Interstate Highway       |  Wilderness Area             |
|  Other Highway            |  National Recreation Area    |
|  State or National Border |   |



1 inch equals approx. 41 miles  
 0 25 50 Miles



Long Distance Trails of the Pacific Northwest

Ted Hiltzroth, Dec. 2000





























-5300

twilight







Bogachiel Rain Forest

TRAILHEAD

OLYMPIC

National Forest



























APPLETON PASS  
ELEV. 5000'

➔ SOL DUC RIVER 2.6  
TRAIL

➔ BOULDER CREEK 5.2  
CAMPGROUND













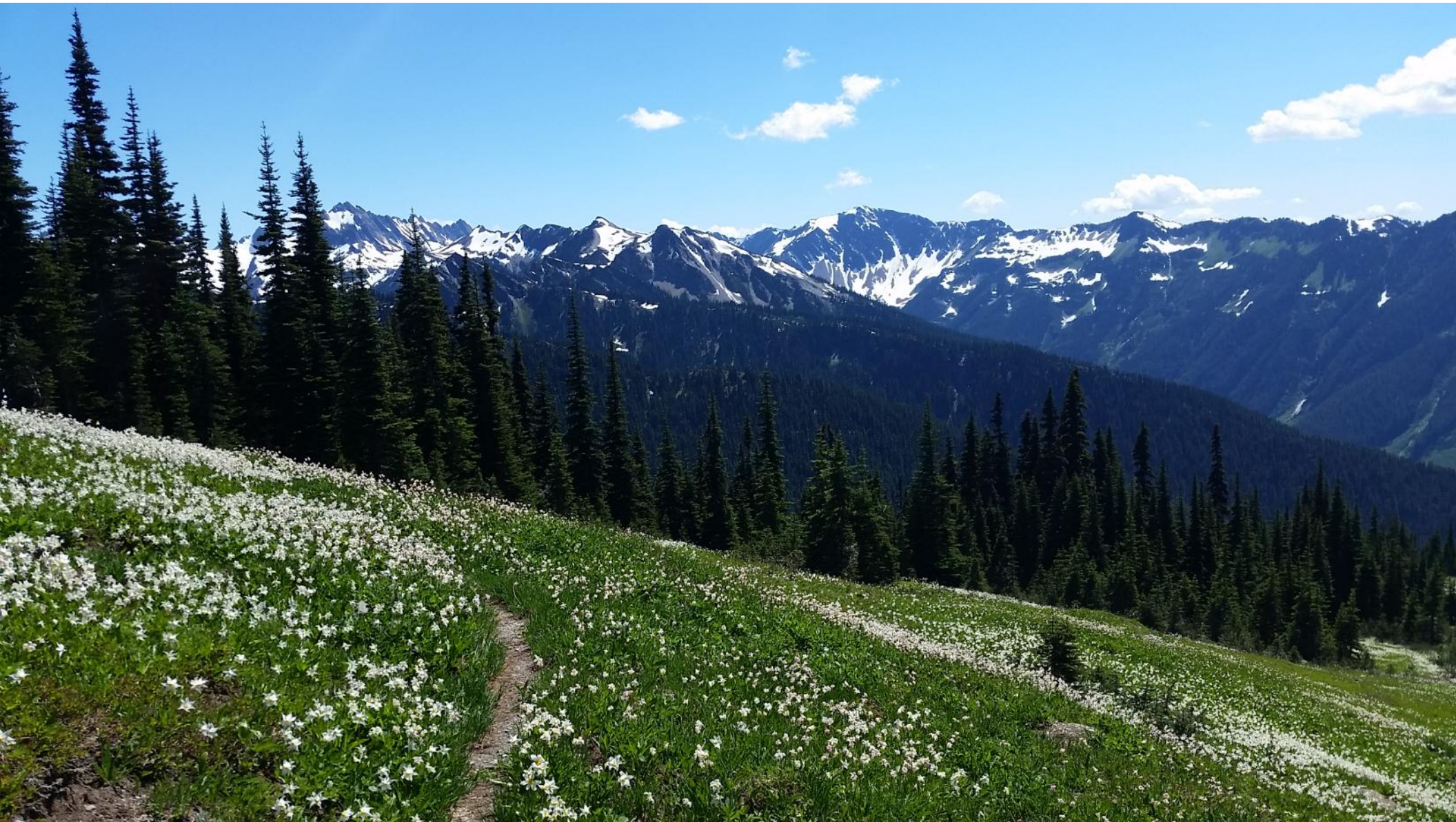
























































CONSTANCE  
PASS  
EL. 5000'













EBEY'S LANDING STATE PARK  
WELCOME  
EBEY'S LANDING  
NATIONAL HISTORICAL RESERVE

Document Fee Required

















THIS  
TRAIL  
IS OPEN















## DECEPTION PASS

TO THE NORTH OF THIS NARROW PASSAGE IS FIDALGO ISLAND, SO NAMED FOR THE SPANISH EXPLORER, LIEUTENANT SALVADOR FIDALGO. TO THE SOUTH IS WHIDBEY ISLAND, SECOND LARGEST ISLAND IN THE CONTIGUOUS 48 STATES, WHICH CAPTAIN GEORGE VANCOUVER, WHILE EXPLORING THIS REGION IN 1792, AT FIRST THOUGHT TO BE A PENINSULA. FURTHER EXPLORATION CONDUCTED BY HIM DISCLOSED THE EXISTENCE OF THIS INTRICATE CHANNEL UPON THE REALIZATION THAT HE HAD BEEN DECEIVED AS TO THE CHARACTER OF THE LARGE ISLAND. VANCOUVER GAVE TO THIS CHANNEL THE NAME OF DECEPTION PASSAGE AND IN NAMING THE ISLAND HE HONORED HIS TRUSTED OFFICER, JOSEPH WHIDBEY.









FREDONIA GRANGE 545





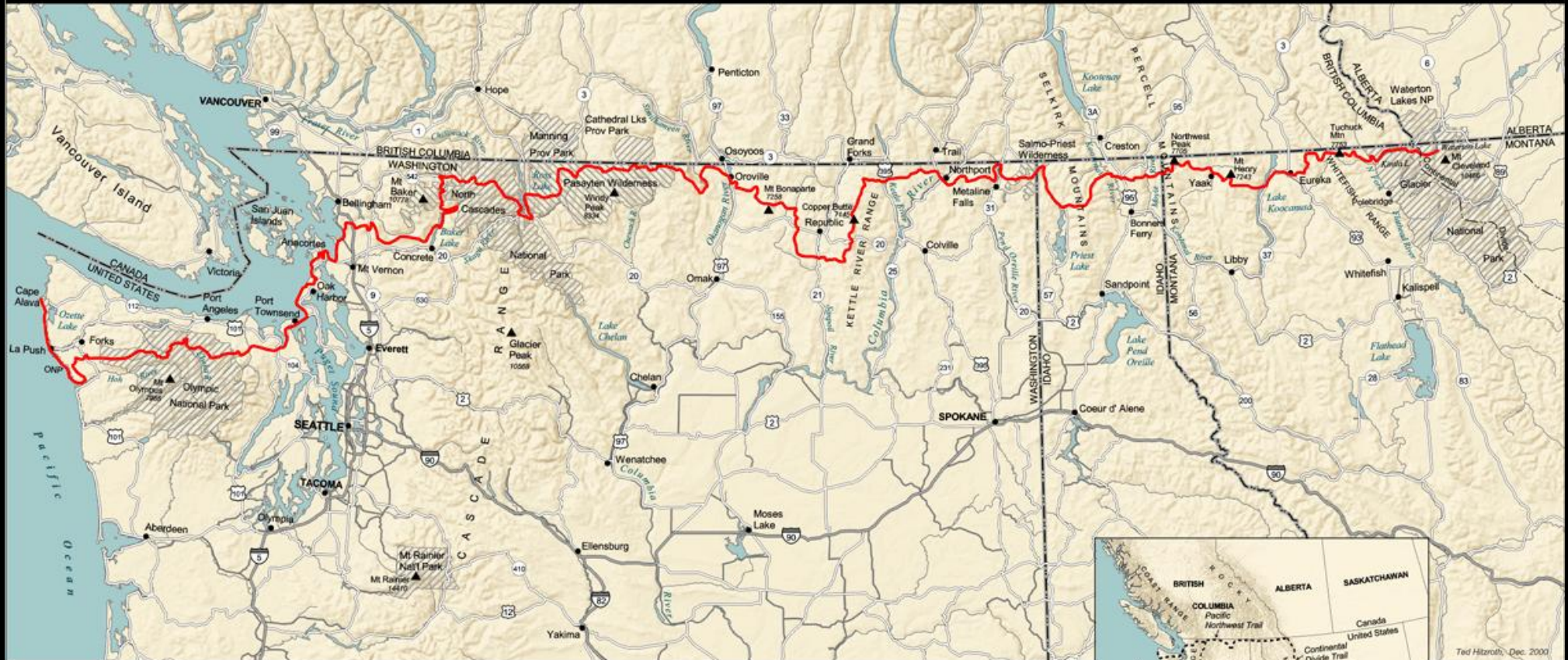
CONCRETE  
WELCOMES YOU

No Burn Area  
Outdoor Burning  
PROHIBITED in  
Open Grass Areas





# The Pacific Northwest Trail



- Pacific Northwest Trail
- Interstate Highway
- Other Highway
- State or National Border
- National or Provincial Park
- Wilderness Area
- National Recreation Area



1 inch equals approx. 41 miles  
 0 25 50 Miles



Long Distance Trails of the Pacific Northwest

Ted Hiltzroth, Dec. 2000









**Chief Mountain**  
Glacier Park, Inc. Shuttle

**Trail Description**

Trail Name	Distance	Difficulty	Season
Chief Mountain	10.5 miles	Strenuous	Summer
Chief Mountain	10.5 miles	Strenuous	Summer

**Trail Map**

**Trail Notes**

**Glacier Park, Inc. Shuttle**





Glacier National Park

## Belly River Trailhead

**Trail Description**  
The trail descends a series of glacial terraces through aspen and lodgepole pine forests, crossing the Belly River on the terrace, where several meadows and meadowettes dot the trail. The trail ends at Belly River Ranger Station, leading to glacially formed lakes and meadows in the north (Lakes Elizabeth and Phyllis) and near historic homes in the south (Lakes Elizabeth and Phyllis). The trail is a moderate to difficult hike, with a steep descent on the Belly River valley, resulting in much downhill on the trail.



**Trail Profile**



**Leave No Trace**

- Stay on designated paths.
- Travel and camp on durable surfaces.
- Dispose of waste properly.
- Leave what you find.
- Minimize campfire impacts.
- Respect wildlife.
- Be considerate of others.

**Water Risks and Responsibility**

- It is not recommended to drink wild surface water.
- Do not drink.
- The risk of untreated surface water is high.
- No drinking.
- A permit is required for backcountry camping.
- Glacier is wild country. Bears, moose, and other animals roam. Observe current trail advisories.
- Bears, moose, elk, goats, and other wildlife are potentially dangerous. Please remain on a well-defined trail. Make noise to alert bears to your presence and never hike alone. Feeding wildlife is prohibited.

























	MI.	KM.
BROWN PASS C.G.	0.3	0.5
HEAD BOWMAN LAKE	6.7	11
FOOT BOWMAN LAKE	13.8	23
◊ GOAT HAUNT R.S.	8.4	14

BOULDER PASS TRAIL		
	MI.	KM.
◊ HOLE-IN-THE-WALL CPG.	2.1	3.4
◊ BOULDER PASS CPG.	5.6	9.0
◊ UPPER KINTLA LAKE CPG.	11.2	18.0
◊ HEAD OF KINTLA LAKE CPG.	16.5	26.6





























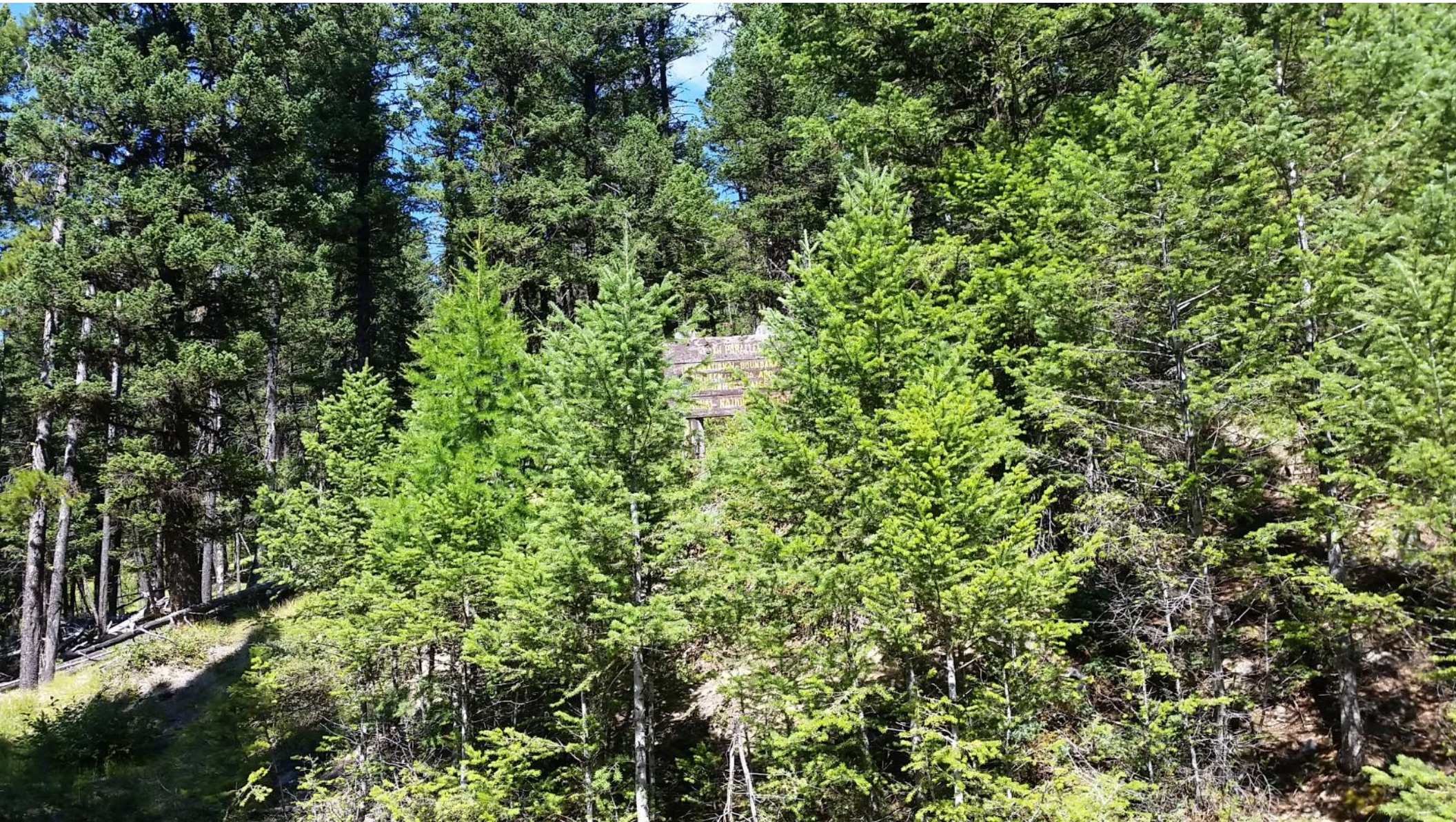


















**EUREKA HEALTH**  
A DEPARTMENT OF KALIFORNIA REGIONAL MEDICAL CENTER  
(406) 297-3146 • 304 Osloski Rd  
**Prompt Care** WALK-INS WELCOME  
OPEN: M-F 8am - 5pm Sat. 9am-1pm  
STRAIGHT AHEAD 1 MILE - RIGHT OSLOSKI ROAD

LAKE KOOCANUSA →

ENTERING EUREKA



A  
49









◀ BLACK BEAR

GRIZZLY BEAR ▶



# THIS IS GRIZZLY BEAR HABITAT

Both grizzly and black bear inhabit this area. Please keep this in mind as you enjoy the outdoors. We need your help for management of both species for future generations. Some roads have been closed in this area to provide security for elk, bear & other animals.

*Hunters: know your bears!*

*Campers: keep a clean camp! -- Hikers: be alert on trails!*













Intermission





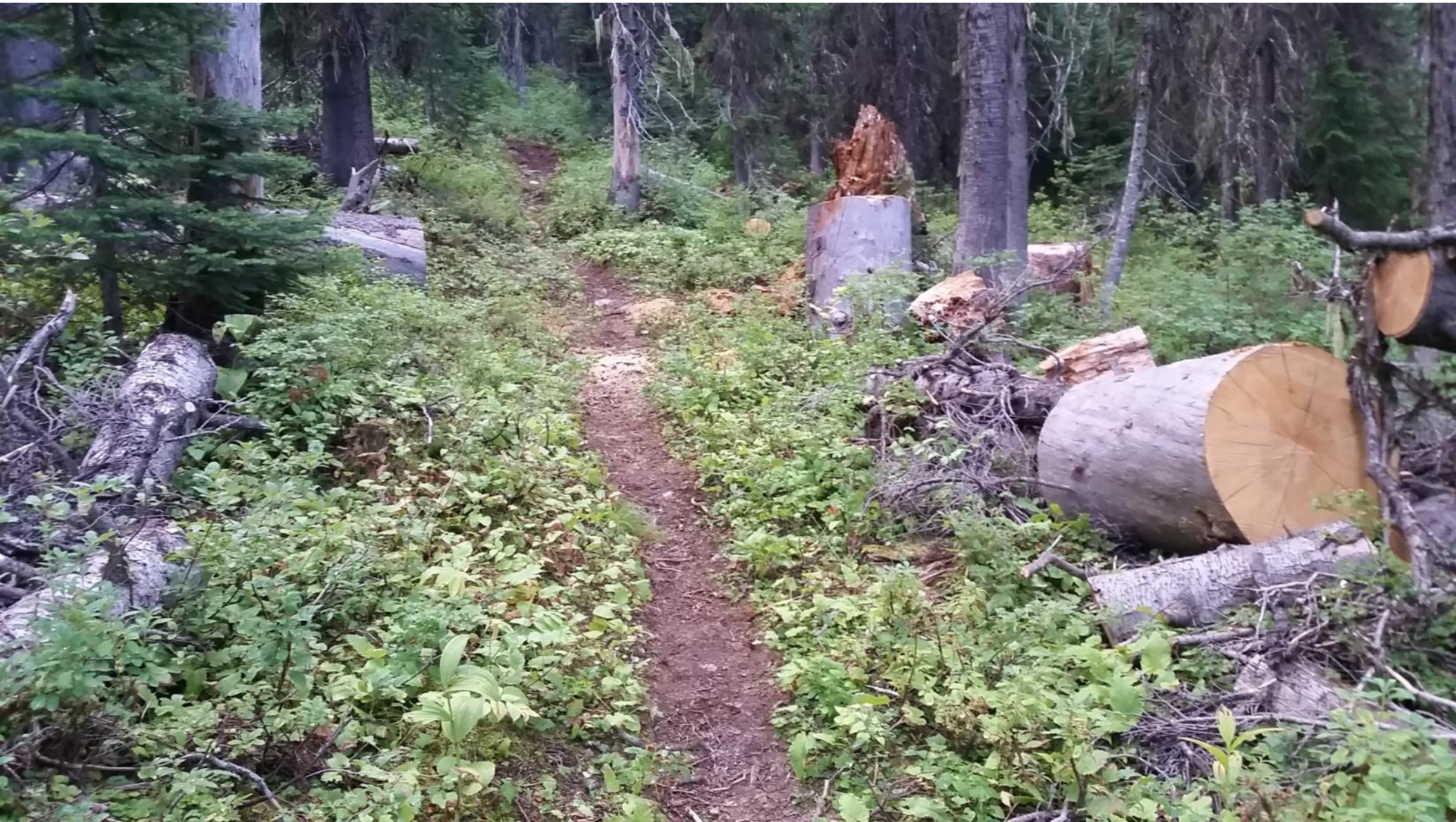










































































**ROAD CLOSED**  
**MILES AHEAD**  
**LOCAL TRAFFIC ONLY**

**662**

**NOTICE**  
Hughes Creek Bridge  
Construction  
**Road 662 Will Be Closed**  
Starting August 1, 2016  
Through early September  
For Information call the  
Priest Lake Ranger Station  
at 208-443-2512

















SALMO

PRIEST

WILDERNESS

IDAHO PANHANDLE

National Forest



← METALINE FALLS

← SULLIVAN LK.

Fire Restrictions  
Now in Effect

- No Campfires
- No Charcoal Grills
- Stoves OK

























**WARNING**  
Entering Burned  
Area.  
Potential Hazards  
Include:  
Loose Rocks, Falling  
Trees and Limbs,  
Flash Flooding,  
and Debris Flows.  
Portions of Trail are  
Damaged or  
Blocked w/ Debris.













WELCOME TO  
**REPUBLIC**  
Agriculture + Mining + Recreation + Timber

JW. SLAGLE PARK









Sweat Creek  
PICNIC AREA  
OKANOGAN  
*National Forest*  
U.S. DEPARTMENT OF AGRICULTURE









PIPSISSEWAZMI

PIPSISSEWA  
TRAIL 4.333  
1 MILE









BONAPARTE MOUNTAIN CABIN

NATIONAL REGISTER OF HISTORIC PLACES

BUILT IN 1914 OF SQUARED  
HAND-Hewn LOGS. THIS CABIN

LOOKOUT SUPPORTED A  
AND HELIOGRAPH



















Clear  
Transparente

Original  
**Shoe Goo**

NULTON  
IRRIGATIO  
026111029  
608000343  
CD  
\$6.49

REBUILD, PROTECT, REPAIR  
RECONSTRUYA, PROTEJA, REPARA

**SHOE  
REPAIR  
REPARACIÓN  
DE ZAPATO**

PERMANENT  
FAST REPAIR  
WATERPROOF

REPARACIÓN RÁPIDA  
Y PERMANENTE  
IMPERMEABLE

FOR USE ON:  
PARA UTILIZAR EN:

- Leather / Cuero
- Rubber / Goma
- Vinyl / Vinilo
- Canvas / Lona

MADE IN USA  
by Eclectic Products

CAUTION  
FLAMMABLE. VAPOR HARMFUL.  
See Other Cautions On Back Panel.

PRECAUCIÓN  
INFLAMABLE. VAPOR DAÑINO.  
Ver otras precauciones en el panel posterior.

Original  
**Shoe Goo**

SHOE REPAIR  
AND  
PROTECTIVE  
COATING

REPARACIÓN DE ZAPATOS  
Y REVESTIMIENTO PROTECTOR

CLEAR  
TRANSPARENTE

3.7 fl oz (109.4 mL)













CHOPAKA  
CANADIAN CUSTOMS  
9:00 AM - 5:00 PM DAILY

OSOYOOS  
CANADIAN CUSTOMS  
OPEN 24 HOURS









**NO  
TRESPASSING**

LEAVING STATE LAND  
ENTERING PRIVATE  
PROPERTY

-----  
NO TRESPASSING  
-----

RANCH ACCESS ONLY













































PASAYTEN

WILDERNESS

OKANOGAN

National Forest









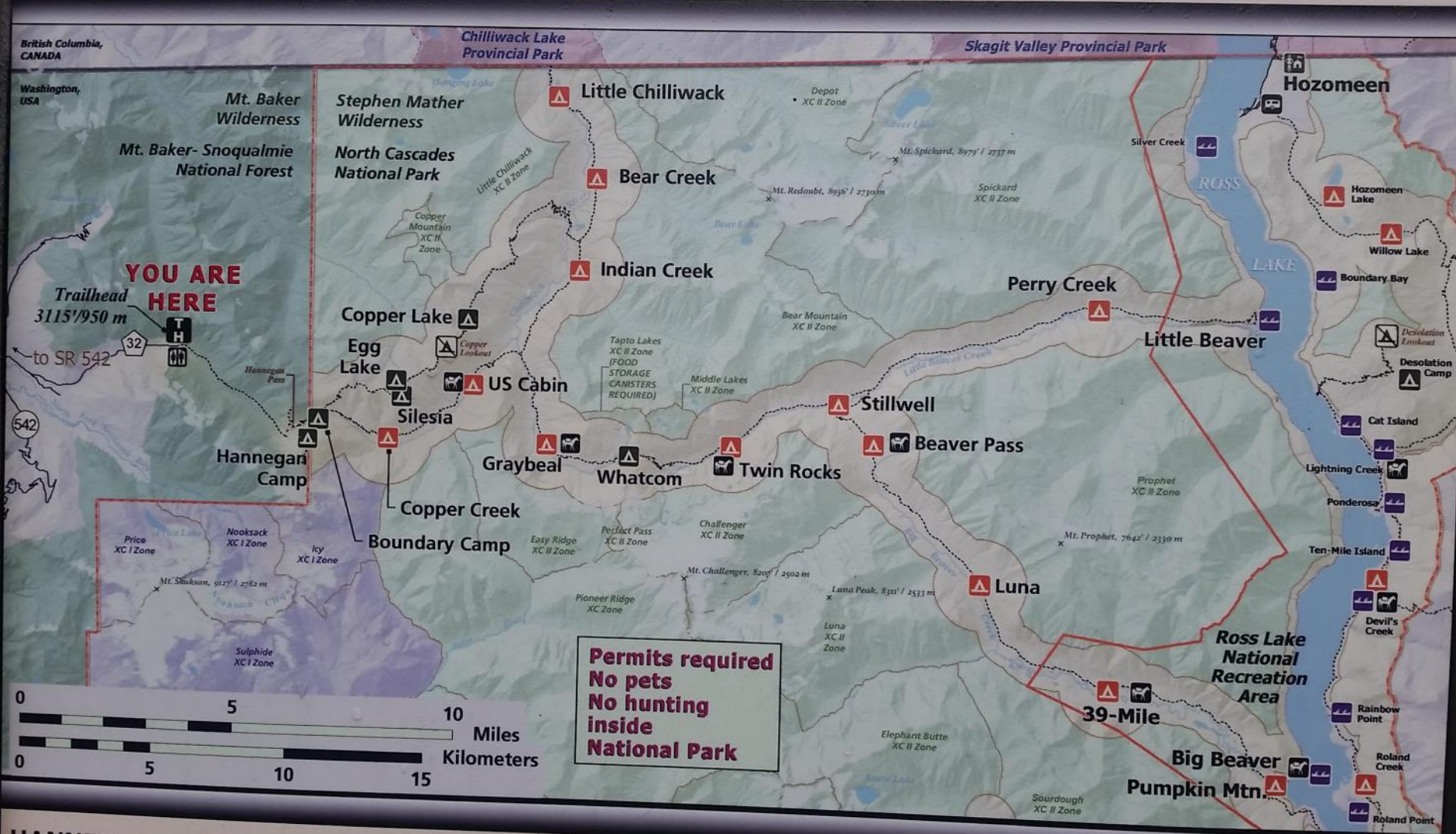












**Permits required**  
**No pets**  
**No hunting**  
**inside**  
**National Park**

**KEY**

- D
- D
- D
- D
- D
- N
- M
- C
- C
- Tr

Elev.  
 6562 FT  
 2000 M  
 4922 FT  
 1500 M  
 3281 FT  
 1000 M  
 500 FT  
 1640 M  
 0 Miles  
 0 KM

**HANNEGAN PASS, COPPER RIDGE AND CHILLIWACK VALLEY TRAILS**

**TIPS FOR CAMPING IN BEAR COUNTRY**

**PROTECT W**

HanneGAN Pass

Food and Odors Attract

























1ST & 3RD WEST

No Burn Area  
Outdoor Burning  
PROHIBITED in  
Urban Growth Areas

we|city  
Town of Concrete

CONCRETE  
WELCOMES  
YOU



# Logistics

- Primary source of info: [www.pnt.org](http://www.pnt.org)
  - Really quite complete
- Guidebook: Pacific Northwest Trail Digest by Tim Youngbluth
- Maps: print from [www.pnt.org](http://www.pnt.org), optionally also use Guthook app
- Bottom line: [www.pnt.org](http://www.pnt.org) has just gotten better over time, pretty much everything you need is there now, or referenced from there



## “Best” Shorter Trips (very subjective!)

- In ONP: Ozette Triangle, Seven Lakes Basin/High Divide Loop, Grand Pass Loop. Or just all of the park E-W or W-E as you choose!
- Deception Pass Park on Whidby Island
- Mount Baker area: Oyster Dome, Park Butte Lookout, Baker Lake
- North Cascades: Devil’s Dome loop (circumnavigate Jack Mt.)
- East Bank Trail to Desolation Peak (east bank of Ross Lake)
- Boundary Trail in the Pasayten Wilderness (80 miles one-way!)
- NE Way: 44 mile Kettle Crest Trail, 19 mile Salmo-Priest loop
- Idaho: Parker Ridge Traverse
- Montana: Whitefish Divide, and just *all* of the PNT in Glacier N.P.