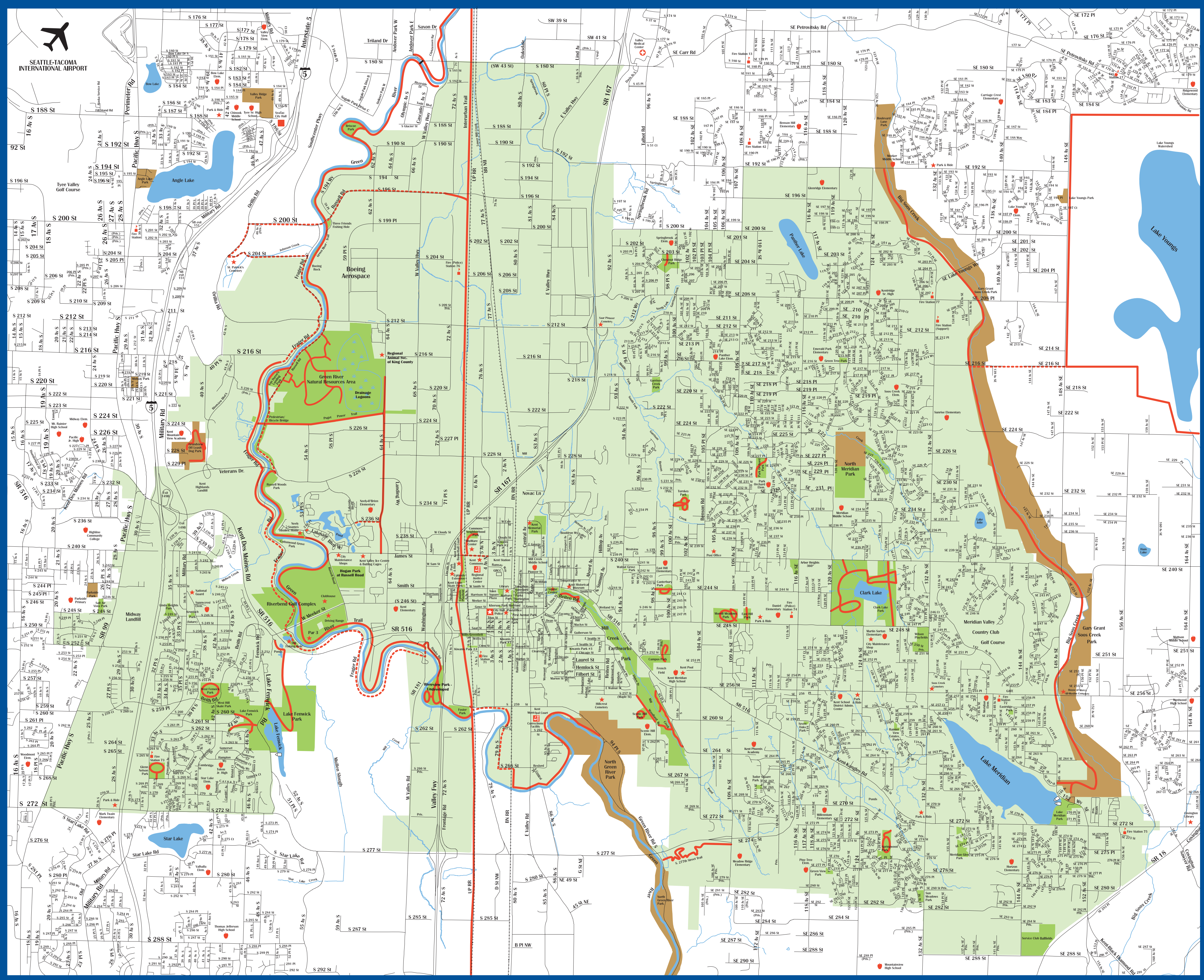


1 2 3 4 5 6 7 8 9 10 11 12 13 14 15 16

A  
B  
C  
D  
E  
F  
G  
H  
I  
J  
K  
L  
M  
N  
O



### Map Key

- Kent City Limits
  - Kent Parks & Open Space
  - Other Parks
  - Water
  - Fire Stations
  - Kent City Hall
  - Public Facilities
  - Regional Justice Center
  - Schools
  - Trails
  - Trails on Road shared with motorized vehicles
  - Boat Launch
- Scale:
- 
- 1 MILE  
1 MILE = 2,375 inches (approx.)

### Trails

Trails for walking, jogging, and cycling are abundant in Kent. The paved trails along the Green River and the Interurban Trail offer magnificent views of Mt. Rainier, and a peaceful environment away from major traffic arterials.

- M-10** South 277th Street Trail - 1.1 miles
- I-12** Clark Lake Park  
Several miles of trails in a 130 acre park
- H-7** Commons Neighborhood Trail - .39 miles
- L-3** Glenn Nelson Park (loop) - 21 miles
- F-5** Green River Natural Resource Area Trail - 1.3 miles  
BICYCLES PROHIBITED. Owned and managed by Kent Public Works Dept. For more information go to [www.KentWA.gov/GRNRA](http://www.KentWA.gov/GRNRA) or call 253-856-5551.
- H-5** Green River Trail - 10.46 miles  
Includes shared roadways. Multiple access points.
- A-7-07** Interurban Trail - 6.10 miles in Kent  
King County Regional Trail. Multiple access points.
- K-5** Lake Fenwick Trail - 1.09 miles
- C-15** Lake Youngs Trail (King Co.) - 10 mile loop
- K-10** Mill Creek Canyon Trail - 1.5 miles
- J-11** Morrill Meadows Park  
Wooded trail (loop) 25 miles  
Meadow trail (loop) 25 miles
- F-6** Puget Power Trail - 1.1 miles
- J-15** Soos Creek Trail - 6 miles  
King County Regional Trail
- M-13** Springwood Park (loop) - 41 miles
- H-10** Turnkey Park (loop) - 35 miles
- K-3** West Fenwick Park  
Lower trail (loop) .30 miles  
Upper trail (round trip from lower loop) .44 miles

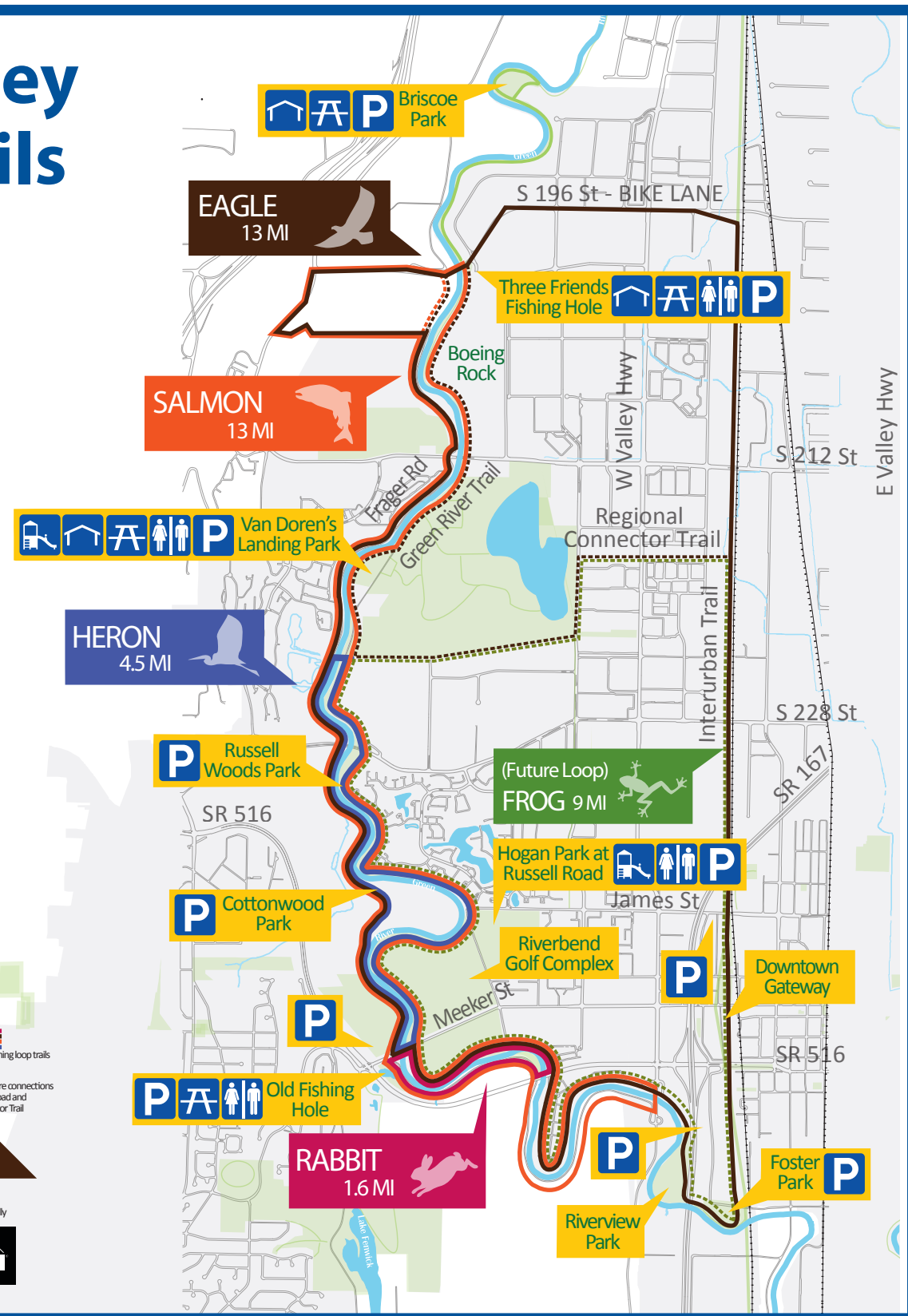


For more information about local and regional trails and closures, please visit and like the King County Rivers Facebook page at [Facebook.com/KingCountyRivers](https://www.facebook.com/KingCountyRivers) or you can also follow [@GreenRiverTrail](https://www.instagram.com/GreenRiverTrail) on Twitter. Also, check out [Gismaps.KingCounty.gov/IMap/](https://www.kingcounty.gov/depts/dnpr/) or [www.kingcounty.gov/depts/dnpr/](https://www.kingcounty.gov/depts/dnpr/)



# Parks and Open Space

## Kent Valley Loop Trails Map



## Contact Info

SERVICE	PHONE	LOCATION
<b>Emergency</b>	<b>9-1-1</b>	
<b>City Admin/Mayors Office</b>	253 856-5700	220 Fourth Ave. S.
Parks & Human Services	253 856-5100	220 Fourth Ave. S. Committee
<b>Parks, Recreation &amp; Community Services:</b>		
Adaptive Recreation	253 856-5030	525 Fourth Ave. N.
Administration	253 856-5100	220 Fourth Ave. S.
Cultural Services	253 856-5050	220 Fourth Ave. S.
Facilities	253 856-5080	400 W. Gowe St.
Home Repair	253 856-5065	220 Fourth Ave. S.
Human Services	253 856-5070	220 Fourth Ave. S.
Kent Commons	253 856-5000	525 Fourth Ave. N.
Kent Valley Ice Centre	253 850-2400	6015 W. James St.
Parks Maintenance (Main)	253 856-5120	5821 S. 240 <sup>th</sup>
Parks Maintenance (East Hill)	253 856-5130	12607 SE 248 <sup>th</sup>
Parks Planning/Dev.	253 856-5110	220 Fourth Ave. S.
Recreation/Athletics	253 856-5000	525 Fourth Ave. N.
Riverbend Golf T-Time	253 856-5199	2019 W. Meeker St.
Riverbend Golf Par 3	253 856-5195	2020 W. Meeker St.
Senior Activity Center	253 856-5150	600 E. Smith St.
Sports Rainout/Inclement Weather Line	253 856-5020	
Youth & Teen Recreation	253 856-5030	525 Fourth Ave. N.
TTY for Hearing Impaired	800-833-6388	
<b>Boards, Commissions and Community Organizations</b>		
Greater Kent Historical Society	253 854-4330	
Human Services Commission	253 856-5070	
Kent Arts Commission	253 856-5050	
Kent Parks Foundation	253 856-5099	
Parks and Recreation Commission	253 856-5100	
<b>SPECIAL EVENTS</b>		
Adopt-A-Park (Year Round)	253 856-5110	
Arbor Day (October)	253 856-5110	
Christmas Rush Fun Run (December)	253 856-5050	
City-Wide Student Art Exhibit (March)	253 856-5050	
Earth Day (April)	253 856-5110	
Fourth of July SPLASH (July)	253 856-5050	
Green Kent Partnership Events (Year round)	253 856-5110	
Kent Cornucopia Days (Lions Club)	253 852-LION	
Kent Farmers Market (Lions Club)	253 852-LION	
Kids' Arts Day (March)	253 856-5050	
National Trails Day (June)	253 856-5110	
Senior Center Holiday Craft Market (Nov.)	253 856-5150	
Spotlight Series (Sept.-April)	253 856-5050	
Summer Concert Series (July & August)	253 856-5050	

## Indoor Recreational Facilities

**Indoor facilities can be rented for receptions, parties, meetings, banquets and workshops. (253) 856-5000**

**Kent Commons** - 525 Fourth Ave. N.  
Community center with room/hall & kitchen rentals; recreational, educational & athletic programs, game room, basketball & volleyball courts, fitness equipment & weight room, handball/racquetball courts, locker rooms. Youth and Teen programs and activities. Adaptive Recreation programs and Activities. **(253) 856-5000**  
**(253) 856-5030 Youth & Teen and Adaptive Recreation**

**Kent Historical Museum** - 855 E. Smith St.  
Located in the historic 1908 Borelter house; permanent and rotating exhibits from Kent's earliest days, period artifacts, furniture and art. **(253) 854-4330**

**Kent Memorial Park Bldg.** - 850 Central Ave. N.  
Community room for rent. **(253) 856-5000**

**Kent Parks Community Center at Phoenix Academy** - 11000 SE 264th St.  
Basketball, break dancing, soccer, boxing, game room, music studio and more, for youths 7th grade through age 19. **(253) 856-5030**

**Kent Pool at Kent-Meridian High School** - 25316 101 St. S.E.  
Public indoor pool, lockers & showers on the campus of Kent Meridian High School; family & public swimming, lap swimming, swim lessons, water exercise classes. **(253) 854-9287**

**Kent Senior Activity Center** - 600 E. Smith St.  
Fitness room, billiards, shuffleboard, room/hall & kitchen rentals, lunch café, recreational & educational programs and activities for seniors age 50 and over. **(253) 856-5150**

**Kent Valley Ice Centre** - 6015 W. James St. (N.E. corner of Russell Rd. Park)  
Privately managed; ice skating, figure skating & hockey pro shop, batting cages, mini-golf, game room, group rentals, concessions. **(253) 850-2400**

**Neely-Soames Homestead** - 5311 S. 237th Pl.  
1885 historic homestead, kitchen garden, event rental space, gardening programs. Green River Trail access. **(253) 856-5000**  
**(206) 878-1573 Gardening Program information**

**Riverbend Golf Complex** - 2019 W. Meeker St.  
9 and 18 hole courses, club house with changing rooms, pro shop, lessons, covered driving range, miniature golf, restaurant. **(253) 856-5199** 18 Hole tee times  
**(253) 854-4653** 9 Hole/Par 3 tee times  
**(253) 859-4000** Driving Range/Mini-golf/Lessons

**Arbor Heights 360°** - 2.82 acres  
H-12 11525 S.E. 240th St.

**Briscoe Park** - 7 acres  
B-5 S. 190th St. on east side of Green River, near 64th Ave. S.

**Burlington Green** - .41 acres  
J-8 W. Meeker and Railroad Ave. N.

**Campus Park** - 16.5 acres  
J-10 9890 S. 252nd St. (at Canyon Dr.)

**Canterbury Park** - 2.08 acres  
I-10 24409 100th Ave. S.E.

**Castlereagh Sister City Park** - .41 acre  
J-8 W. Meeker and Railroad Ave. N.

**Chestnut Ridge Park** - 3.2 acres  
D-10 9901 S. 203rd St.

**Clark Lake Park** - 130 acres  
I-12 Between S.E. 240th and S.E. 248th at 127th Ave. S.E.

**Commons Neighborhood Park** - 2 acres  
H-7 James St. and 5th Ave. N.

**Cottonwood Grove** - .77 acres  
I-5 Between Frager Rd. and Green River, approx. S. 238th

**East Hill Park** - 4.62 acres  
J-11 10920 S.E. 248th

**Eastridge Park** - .8 acres  
K-15 143rd S.E. and S.E. 257th

**First Avenue Plaza** - .6 acres  
J-8 219 First Ave. S.

**Foster Park** - 4 acres  
K-7 S. 259th and 74th Ave. S.

**Garrison Creek Park** - 5 acres  
F-10 9615 S. 218th St.

**Glenn Nelson Park** - 10 acres  
L-3 3216 S. 268th St.

**Grandview Off-Leash Dog Area (SeaTac)** - 37.7 acres  
G-3 S. 228th St. and Military Rd. S.

**Green River Natural Resources Area (Public Works)** - 310 acres  
F-5 21250 Russell Rd. S.

**Green Tree Park** - 1.5 acres  
E-12 120th Ave. S.E. and S.E. 216th St.

**Green View Park** - 1.1 acres  
N-12 S.E. 277th Pl. and 120th Pl. S.E.

**Hogan Park at Russell Road** - 30.4 acres  
I-5 24400 Russell Rd.

**Kaibara Park** - .78 acre  
J-8 First Ave. between W. Smith and W. Meeker

**Kent Lions Skate Park** - .5 acres (leased)  
I-7 W. Smith and Interurban Trail (at Uplands Extension)

**Kent Memorial Park** - 11.2 acres  
H-8 850 Central Ave. N.

**Kent Rotary Downtown Basketball Court** - .25 acres (leased)  
I-7 James St. (S.E. 240th) and Interurban Trail (at Uplands Extension)

**Kherson Park** - .58 acres  
J-8 307 W. Gowe St.

**Kiwanis Tot Lot #1** - .6 acres  
J-8 532 1st Ave. S.

**Kiwanis Tot Lot #2** - .41 acres  
H-8 N. 2nd Ave. and W. Cloudy St.

**Kiwanis Tot Lot #3** - .75 acres  
J-9 Alexander St. between E. Chicago and E. Seattle

**Kiwanis Tot Lot #4** - .35 acres  
J-7 S. 5th Ave. and W. Crow St.

**Kronich Park** - .7 acres  
J-3 Military Rd. and S. 248th (open play area)

**Lake Fenwick Park** - 140.9 acres  
K-5 25828 Lake Fenwick Rd.

**Lake Meridian Park** - 16.02 acres  
M-14 14800 S.E. 272nd St.

**Linda Heights Park** - 4.2 acres  
J-3 S. 248th and 35th Ave. S.

**Meridian Glen Park** - 5.47 acres  
M-14 137th Ave. S.E. and S.E. 275th Place

**Mill Creek Earthworks Park** - 107.1 acres  
J-9 100 Reiten Rd.

**Morrill Meadows Park and Off-leash Dog Area** - 16.6 acres  
J-11 10600 S.E. 248th St.

**Neely-Soames Homestead** - 1 acre  
H-5 5311 S. 237th Place

**North Meridian Park** - 35 acres  
G-12 22828 120 Ave. S.E.

**Old Fishing Hole** - 5.7 acres  
J-5 Frager Rd., South of W. Meeker St.

**Park Orchard Park** - 6.3 acres  
G-11 11058 S.E. 230 St.

**Riverbend Golf Complex** - 167 acres  
I-5 2019 W. Meeker

**Rosebed Park** - 23 acres  
J-8 First Ave. between W. Gowe and W. Meeker

**Russell Woods Park** - 3.38 acres  
G-4 S.E. 228th St. and Russell Rd.

**Salt Air Vista Park** - 2 acres  
J-2 24615 26th Pl. S.

**Scenic Hill Park** - 4.1 acres  
K-10 25826 Woodland Way S.

**Service Club Ballfields** - 28.8 acres  
O-15 14608 S.E. 288th St.

**Seven Oaks Park** - .5 acres  
K-12 S.E. 259th St. and 118th Pl. S.E.

**Springwood Park** - 10 acres  
M-13 12700 S.E. 274th

**Sun Meadows Park** - 1.54 acres  
N-13 13120 S.E. 282 Way

**Sunnjord Sister City Park** - 21 acres  
N-13 W. Meeker and Railroad Ave. N. (at Burlington Green)

**Three Friends Fishing Hole** - 3 acres  
C-5 199970 Russell Rd.

**Titus Railroad Park** - 3 acres  
J-8 238th 1st Ave.

**Town Square Plaza** - .5 acres  
I-8 426 W. Smith

**Tudor Square Park** - 4.7 acres  
L-11 112th Ave. S.E. and S.E. 268th St.

**Turnkey Park** - 6.6 acres  
H-10 23312 100th Ave. S.E.

**Uplands Extension** - 3.35 acres (leased)  
I-7 East of Interurban Trail between W. Smith and James

**Uplands Playfield** - 2.3 acres  
I-7 836 W. Smith

**Van Doren's Landing Park** - 10 acres  
F-4 21901 Russell Rd.

**Walnut Grove** - 3 acres  
I-10 S. 242nd and 94th Ave. S.

**West Fenwick Park** - 37 acres  
K-4 3808 Reith Rd. (42nd Ave. S. and Reith Rd.)

**West Hill Skate Park** - 1.4 acres  
K-4 42nd Ave. S. and Reith Rd.

**Willis Street Greenbelt** - 4 acres (leased)  
J-8 W. Willis between Fourth Ave. S. and Sixth Ave. S.

**Wilson Playfields** - 11.49 acres  
J-13 13028 S.E. 251st St.

**Yangzhou Park** - .41 acres  
J-8 Railroad Ave. and W. Smith St.

## Parks and Open Space Icon Key:

	Parking
	Restrooms
	Seasonal restrooms
	Wheelchair access
	Picnic table
	Picnic shelter
	Play equipment
	Barbecue grill
	Drinking fountain
	Bike trail
	Walking trail
	Seasonal snack bar
	Skateboarding
	Baseball
	Basketball
	Tennis
	Swimming
	Showers
	Fishing
	Boat launch
	Hand launch
	Golfing
	Dog off-leash area
	Observation tower
	Wildlife/Bird viewing
	Climbing pinnacle
	BMX
	Spray fountain
	Public garden
	Public art
	Disc golf
	Mini golf
	Fitness equipment
	Restaurant
	Available for Rentals

## Visit Downtown Kent



Downtown Kent features the City's civic center including City Hall, Kent Chamber of Commerce, Kent Downtown Library, Kent Downtown Post Office, and the Norm Maleng Regional Justice Center. It also features Kent Station, one of Kent's thriving commercial areas with numerous shops, offices, and restaurants. More than two dozen public artworks are concentrated in Kent's Downtown core, easily enjoyed by a walking tour. Murals, sculpture, glass art, and artist-designed tree grates bring beauty and a unique identity to Downtown Kent. Include a stop on the first floor of the Centennial Building (400 W. Gowe St.) to view exhibits by local artists in the Kent Arts Commission Gallery, open weekday business hours. City parks, trails, and recreation facilities are conveniently located throughout the City's core, giving you and your family a perfect place to relax after an exciting day in Downtown Kent.

**LEGEND**  
 = PUBLIC PARKING  
 = PUBLIC ART  
 = PUBLIC BUILDINGS  
 = PUBLIC PARKS  
 = RAILROAD TRACKS



## PARKS & FACILITIES GUIDE

Find Kent parks, trails, schools...and more.

