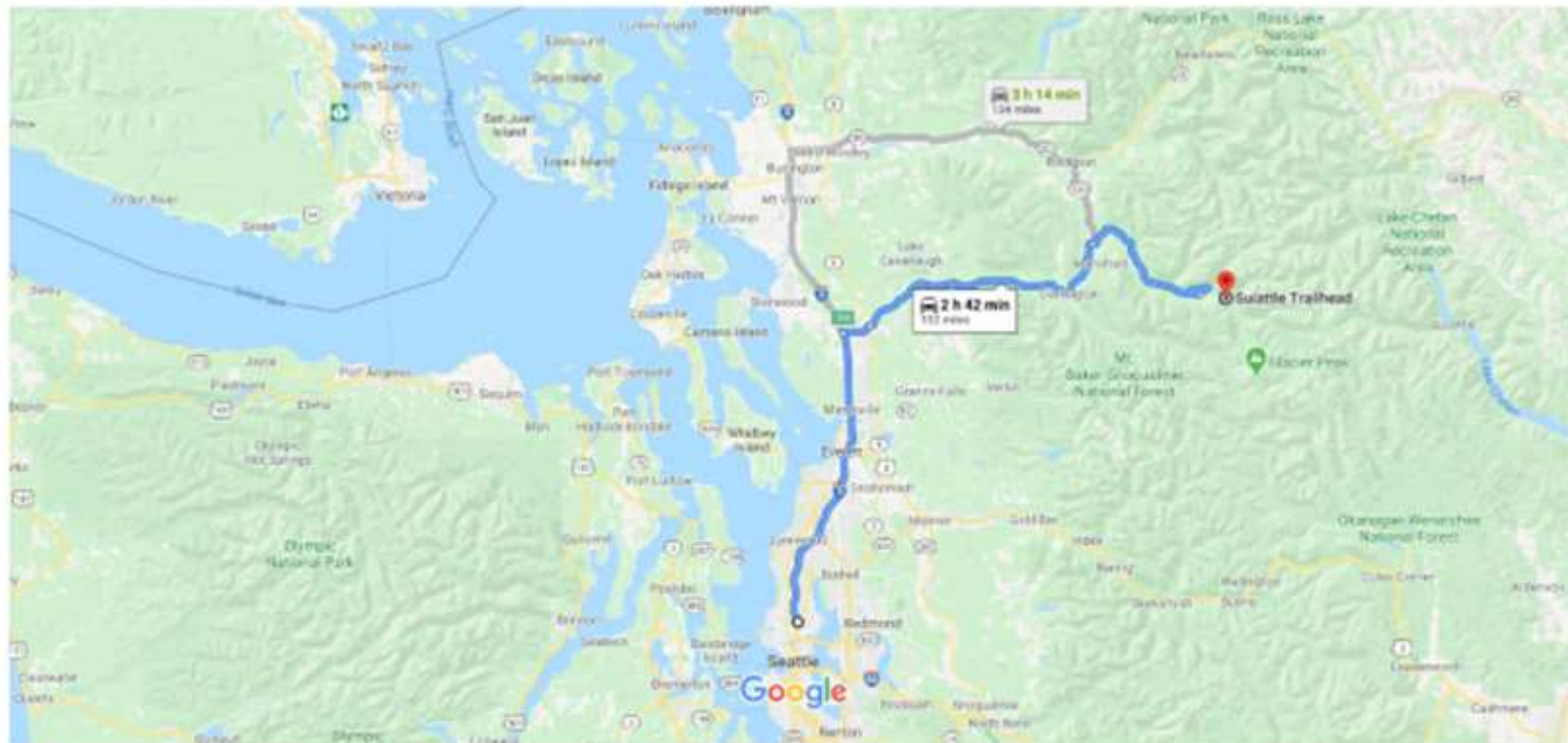




PCT SECTION K

SUIATTLE RIVER TO STEVENS PASS

9/12/15 TO 9/17/15



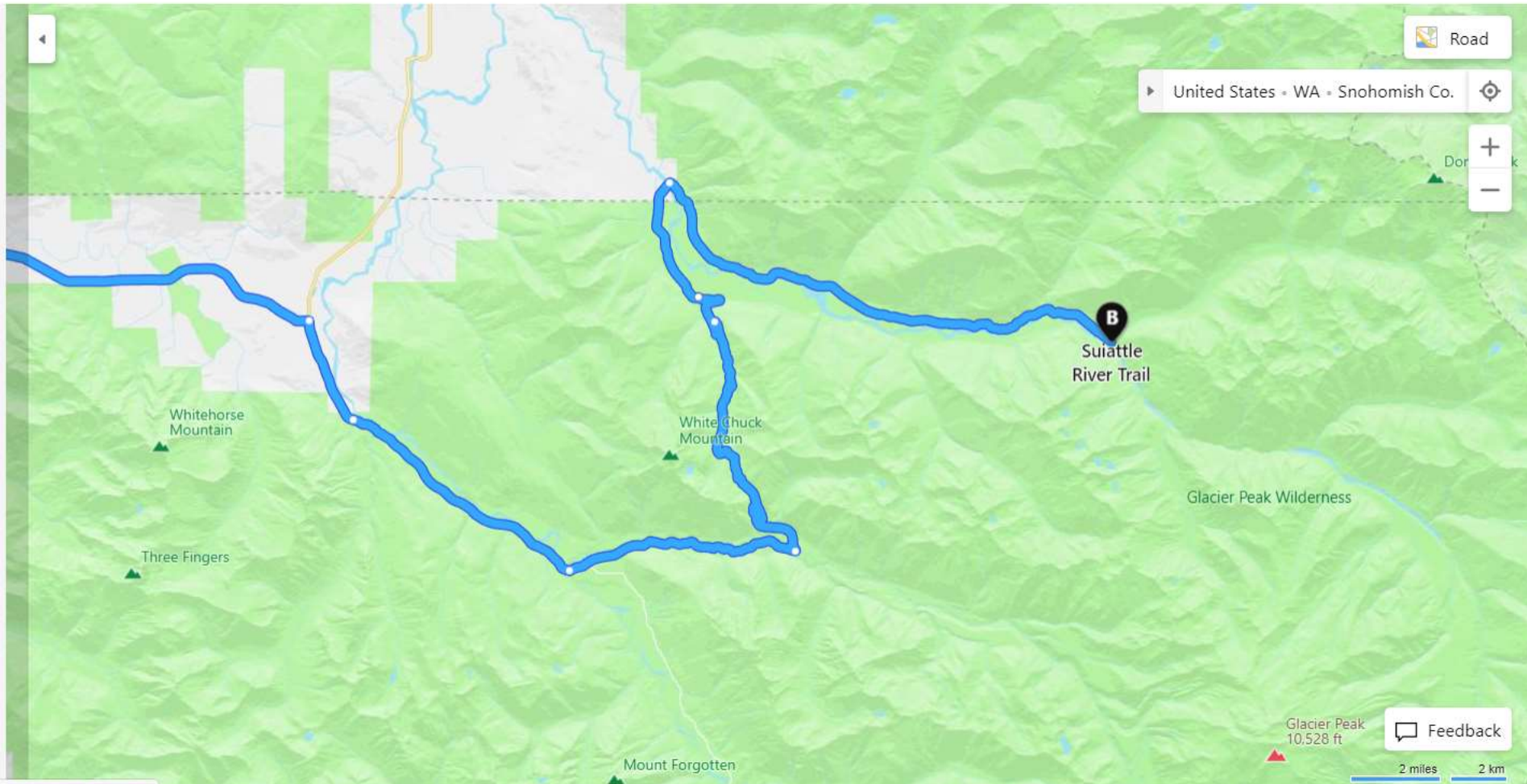
Map data ©2020 Google 10 mi

via I-5 N and WA-530 E/State Rte 530 NE
Fastest route 2 h 42 min
102 miles

via I-5 N 3 h 14 min

Along the route: Attractions, Hotels, Restaurants, Coffee, Gas stations, Grocery stores, More ...

- Turn right onto Mountain Loop Hwy
Shell on the corner
2.6 mi
- Keep straight onto Clear Creek Rd
0.2 mi
- Keep left onto NFD Road 20
6.2 mi
- Bear left onto NFD Road 23
Unpaved Road
5.7 mi
- Bear left onto NFD Road 27
Unpaved Road
7.9 mi
- Make a U-turn at NFD Road 2703
Unpaved Road
1.9 mi
- Bear left onto NFD Road 25
Unpaved Road
3.2 mi
- Road name changes to NFD Road 26
Unpaved Road
12.5 mi



Mt. Baker-Snoqualmie NF Road and Trail Conditions

- Welcome
- Road and Trail List
- Mt. Baker Highway
- Baker Lake Road
- North Cascades Highway
- Suiattle River Road
- Mountain Loop Scenic Byway
- US Highway 2
- Interstate 90

Road Conditions in the Suiattle River Road (Forest Road #26) vicinity.

Click on roads and trails on the map to get more information including notes on the status of a road or trail.

Zoom in by using the + and - buttons in the upper left corner or using the scroll wheel on a computer mouse.

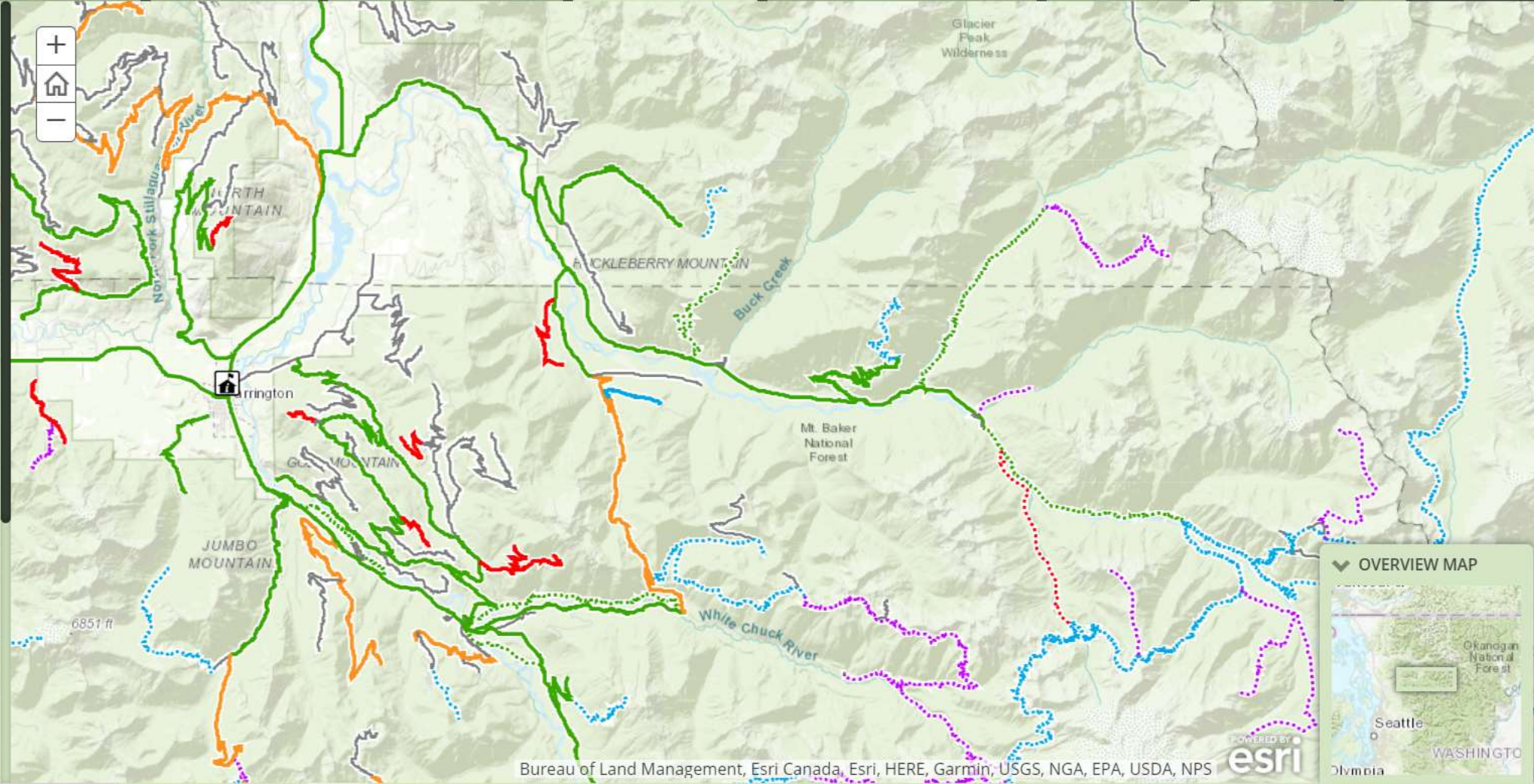
Please click other tabs for road conditions along other road corridors on the Mt. Baker-Snoqualmie National Forest.

Road and trail condition reports are updated regularly with help from forest visitors, trail crews and engineering reports. Please call [Darrington Ranger District](tel:360-436-1155) at 360-436-1155 to give a conditions report after your visit.

Visitor Information Center

Road Condition

- Open
- Closed
- Limited
- Snow



OVERVIEW MAP

Mt. Baker-Snoqualmie National Forest

- Home
- Special Places
- Recreation
 - Bicycling
 - Camping & Cabins
 - Climbing
 - Fishing
 - Hiking
 - Horse Riding & Camping
 - Hunting
 - Nature Viewing
 - OHV Riding & Camping
 - Outdoor Learning
 - Picnicking
 - Scenic Driving
 - Water Activities
 - Winter Sports

- Alerts & Notices
- Passes & Permits
- Maps & Publications
- Land & Resources Management
- Learning Center
- Working Together
- About the Forest
- News & Events

Contact Information

Mt. Baker-Snoqualmie National Forest

Suiattle River Trailhead

Area Status: Open

Provides access to: Milk Creek Trail 790 (area is unavailable), Sulphur Mountain Trail 794, Miners Ridge Trail 785. These trails are all within Glacier Peak Wilderness.

At a Glance

Fees	\$5/vehicle/day
Open Season:	undefined - undefined
Usage:	Light
Best Season:	Summer/Fall
Restrictions:	Wilderness regulations apply within Glacier Peak Wilderness.
Closest Towns:	Darrington, Washington
Passes:	A federal recreation pass may be used as a form of fee payment.
Information Center:	Check current conditions or call Darrington Ranger District office at 360-436-1155.

General Information

Directions:

From Darrington drive north eight miles on State Highway 530 toward Rockport to the Suiattle River Road 26, closed at mile 12.5. From the gate hike or bike approximately seven miles to Forest Service road 2680 on the left (north). Follow this road for six miles to the trailhead.

Directions: From Darrington drive north eight miles on State Highway 530 toward Rockport to the Suiattle River Road 26, closed at mile 12.5. From the gate hike or bike approximately seven miles to Forest Service road 2680 on the left (north). Follow this road for six miles to the trailhead.

Directions:

From Darrington, Washington drive north eight miles on State Highway 530 toward Rockport to the Suiattle River Road 26, drive 23.5 miles to the Suiattle River Trailhead.

Fire Danger TODAY

LOW

Related Information

Suiattle River Trailhead

- News & Events

Quick Links

- Road and Trail Conditions

Areas & Activities

- Find An Area

Find your favorite spot!

- Trails & Campgrounds

Travel Corridor

Select a corridor?

Looking for a trail?

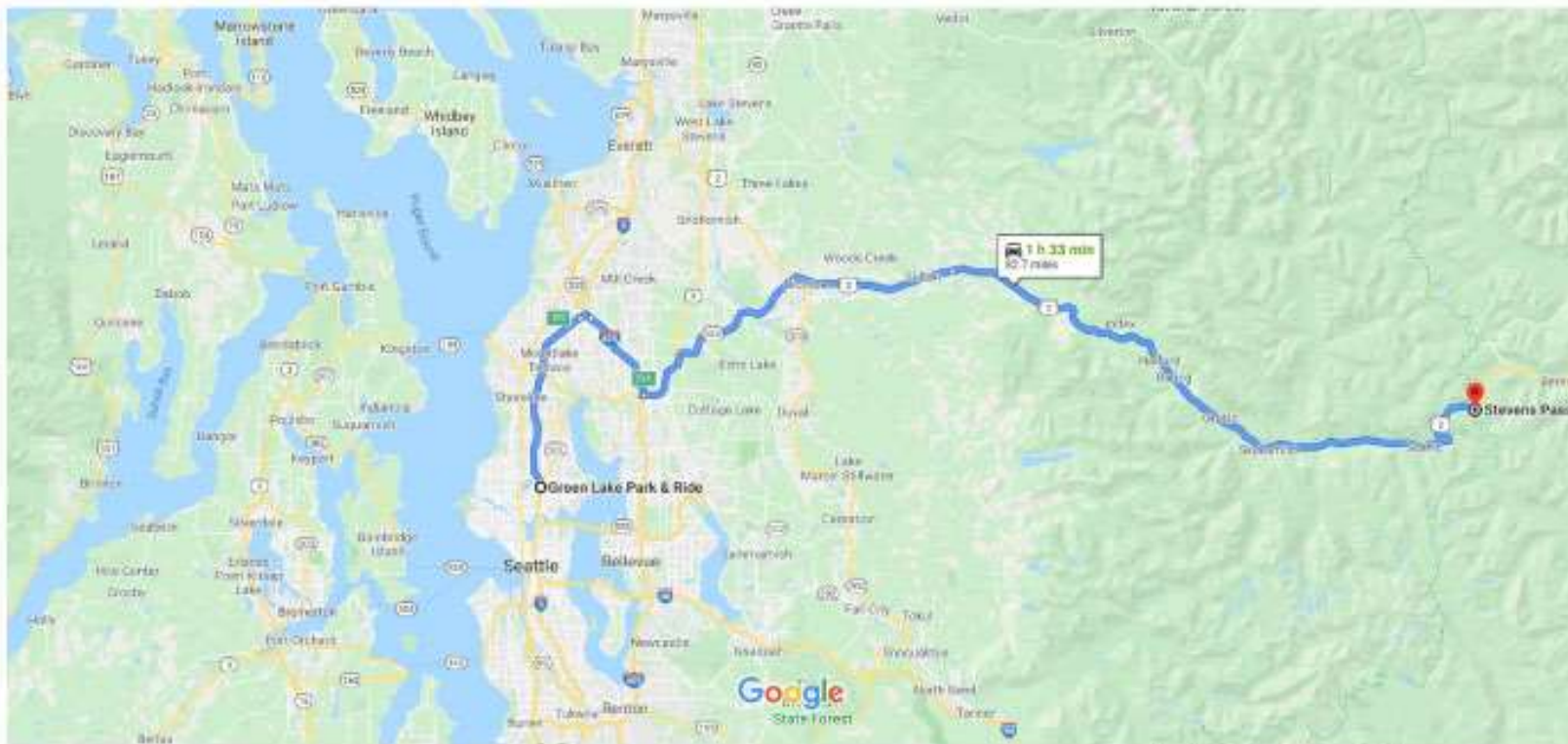
Looking for a campground?

Mt. Baker Highway (State Route 542)

Looking for a trail?

Location

Latitude : 48.2704045116
 Longitude : -121.23664619



Map data ©2020 Google 5 mi

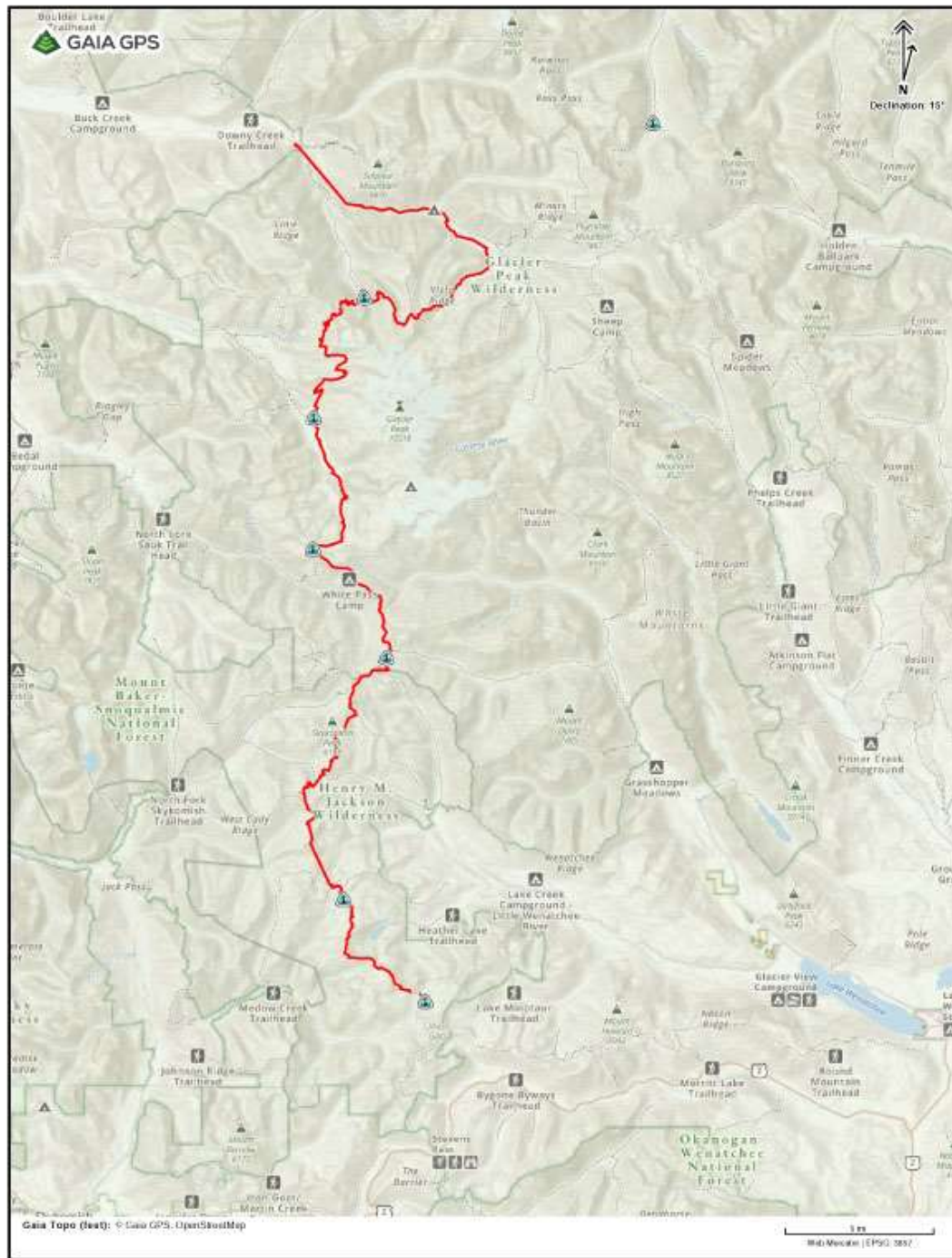
via US-2

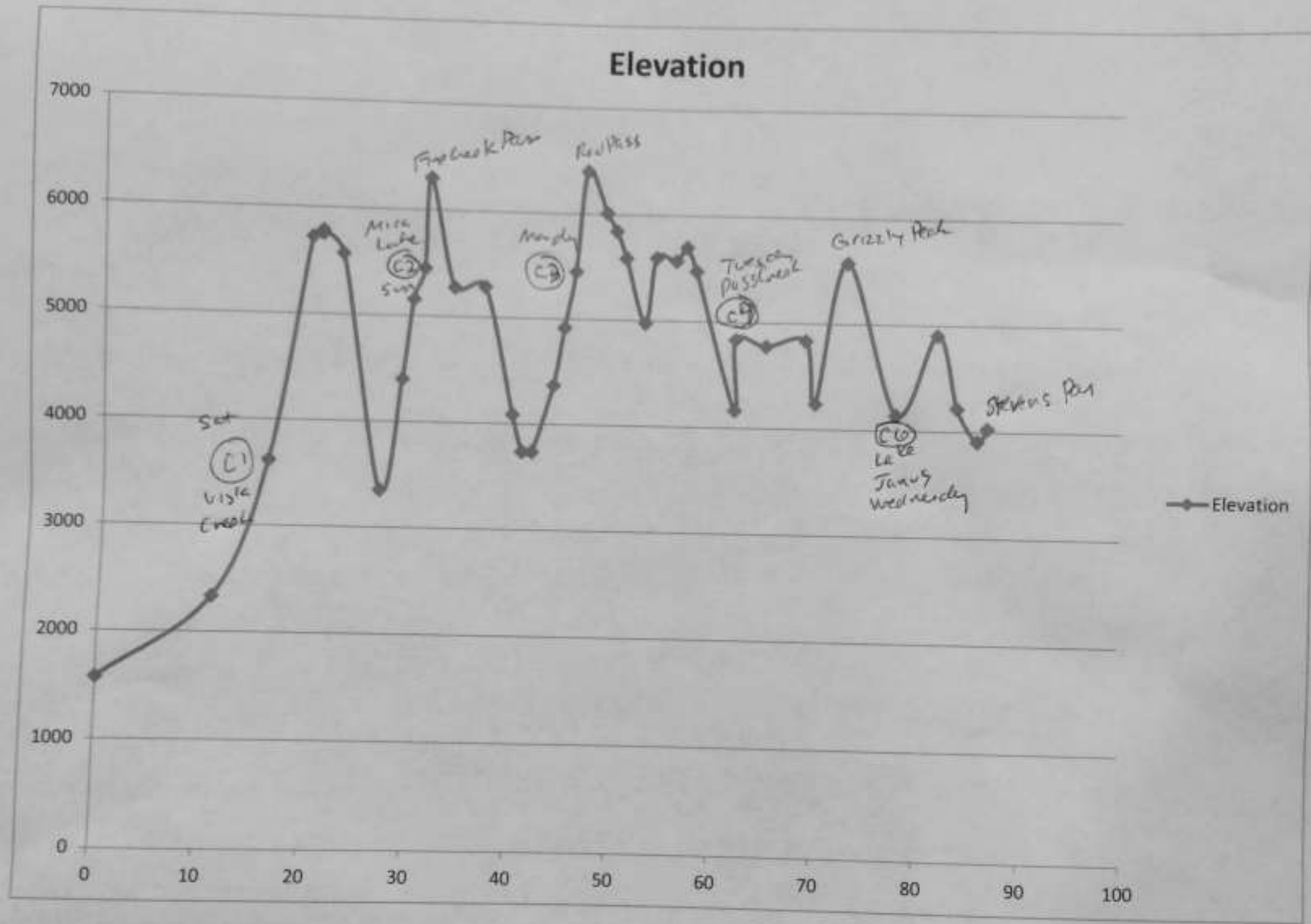
1 h 33 min

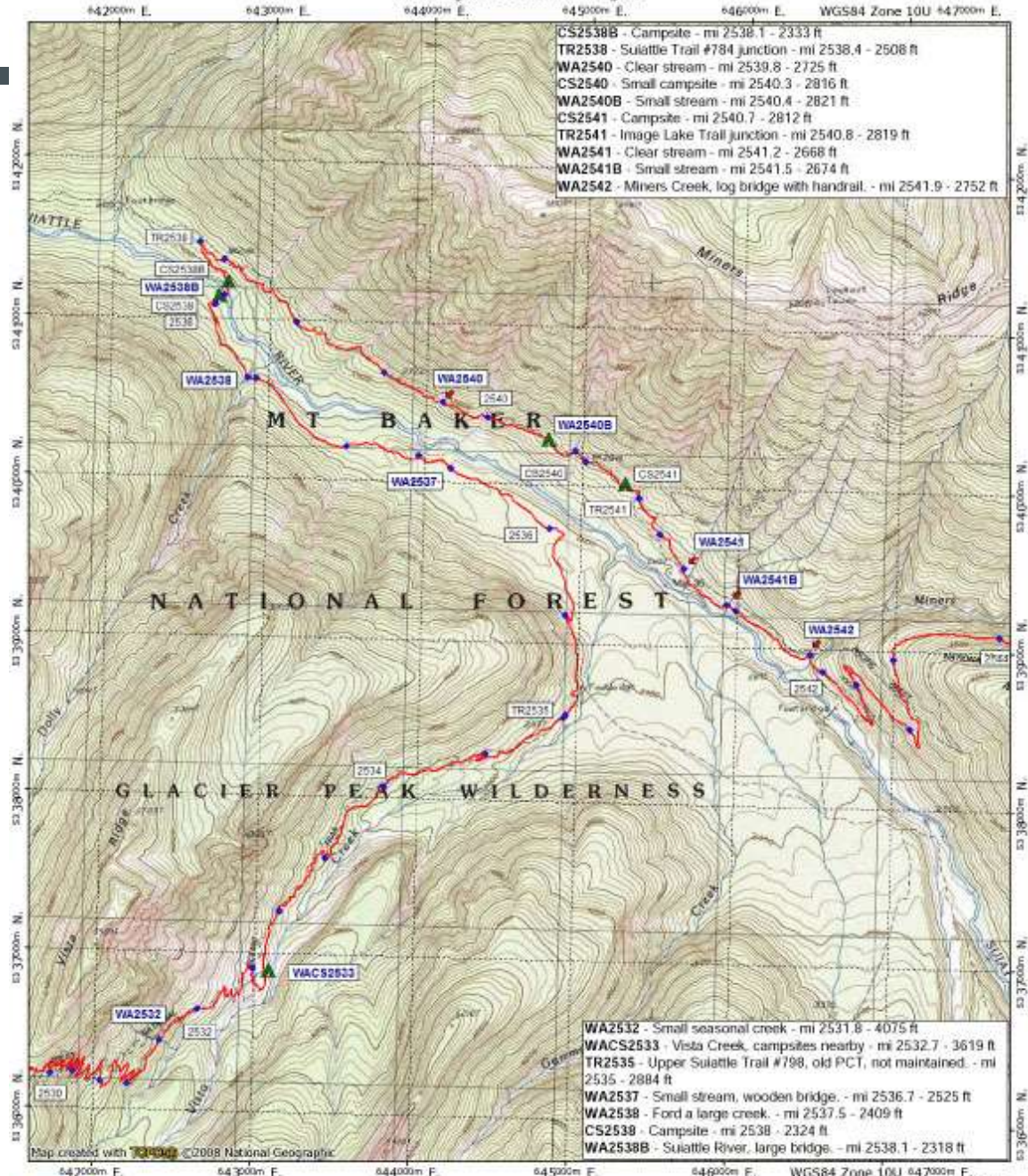
Fastest route, the usual traffic

82.7 miles

[Explore Stevens Pass](#)







Topo
North America

Data Zoom: 12-1

Map navigation icons: pan, zoom, home, etc.

Compass rose showing North (N), South (S), East (E), West (W)

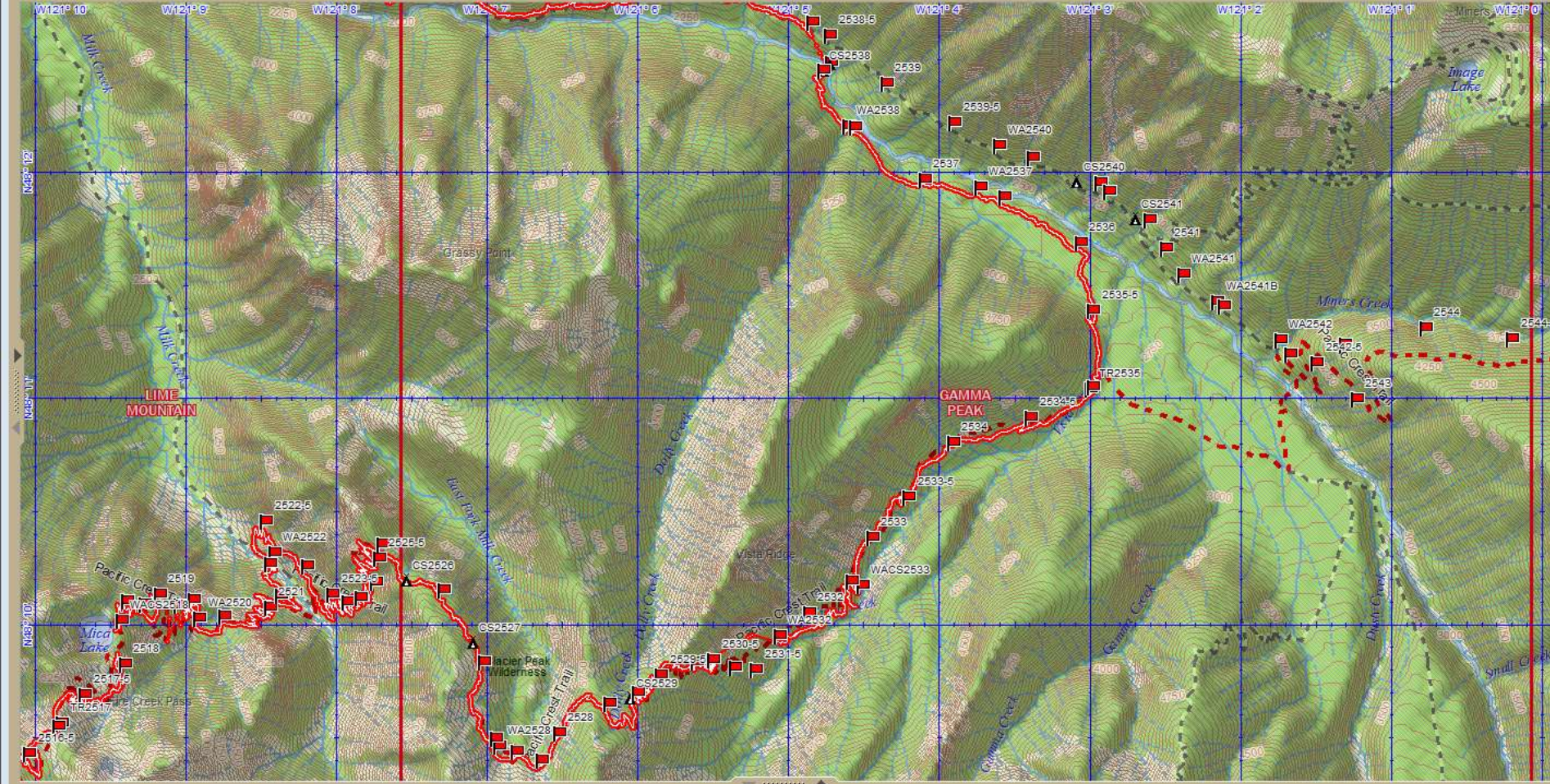
Scale: 0' (N)

Latitude: N48° 11.031'

Longitude: W121° 4.988'

Elevation: 5,364 feet

Interval: 50 feet



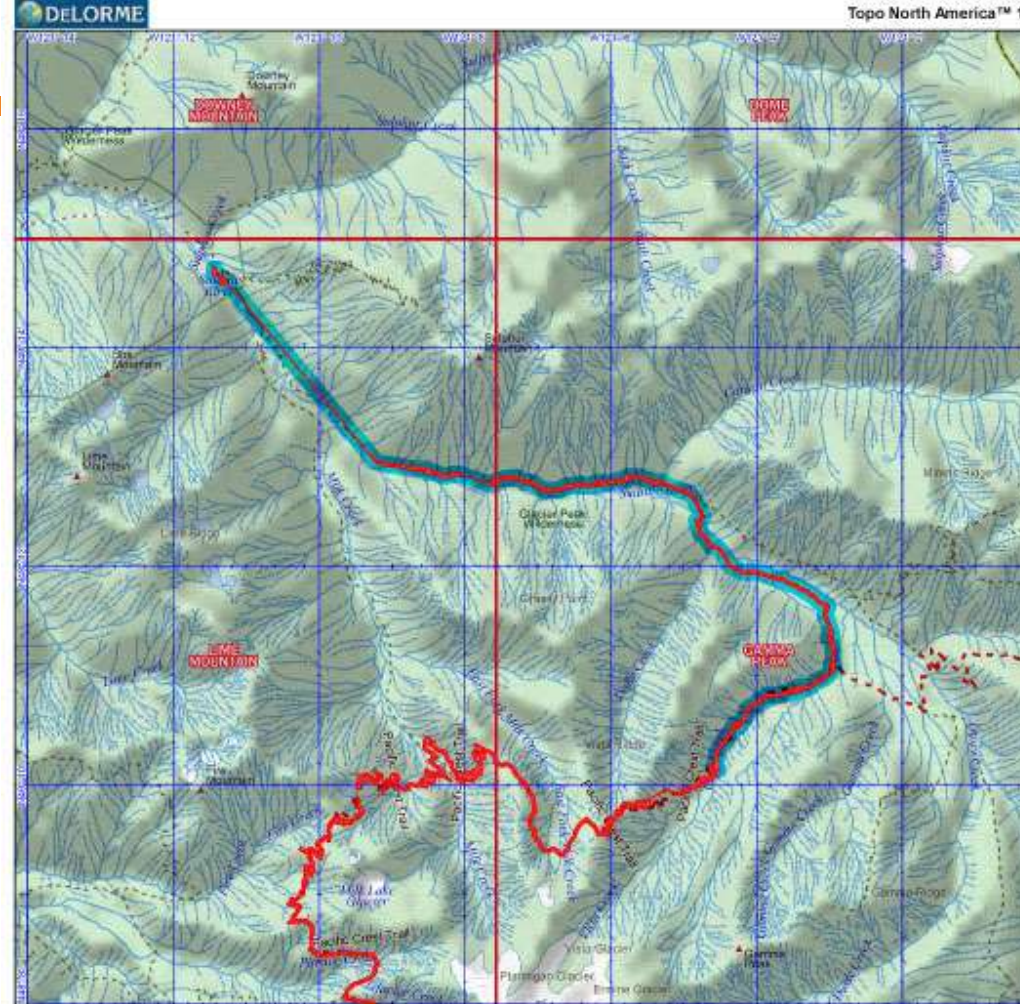


Search / Coordinates



DAY 1 SUIATTE RIVER TO VISTA CREEK

9/12/2015



Lin Dist: 12.4 mi	Terr Dist: 12.6 mi	Elev Gain: 2,039.5 ft	Avg Grade: 14
Climb Elev: 5,598.6 ft	Desc Elev: 3,559.1 ft	Max. Elev: 3,664.1 ft	Min. Elev: 1,552.1 ft
Climb Dist: 7.7 mi	Desc Dist: 4.9 mi		



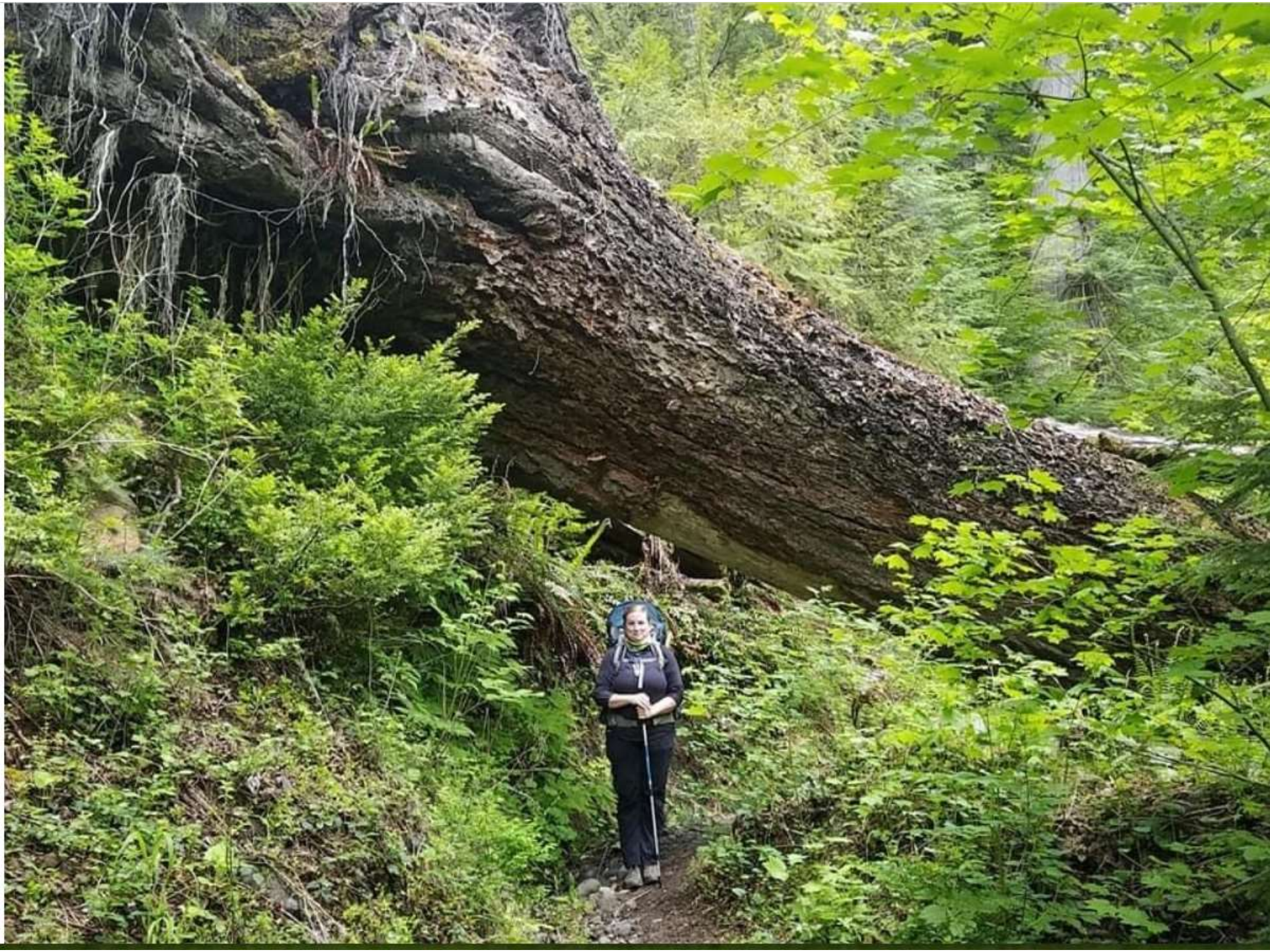
GLACIER PEAK
WILDERNESS
MT. BAKER-SNOQUALMIE
National Forest













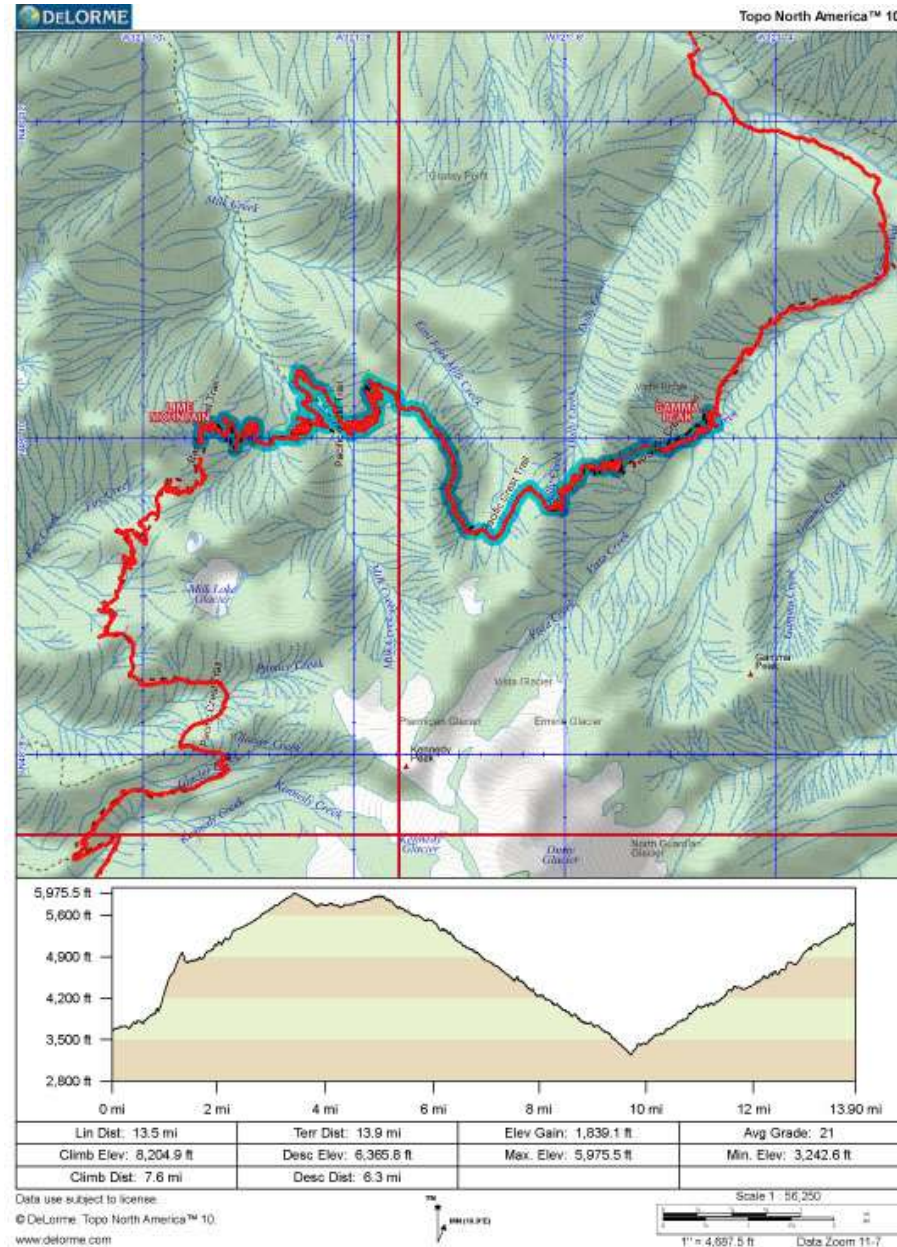


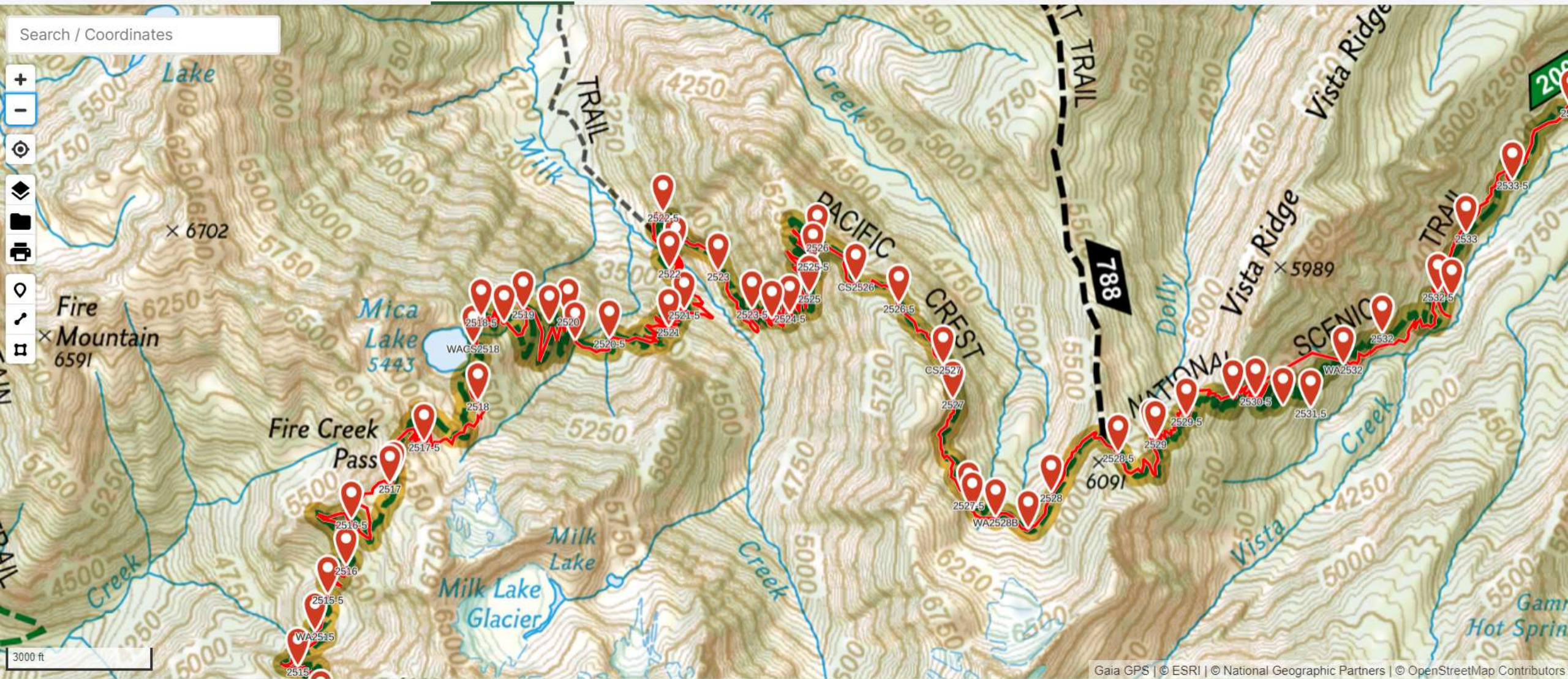




DAY 2 VISTA CREEK TO MICA LAKE

9/13/2015































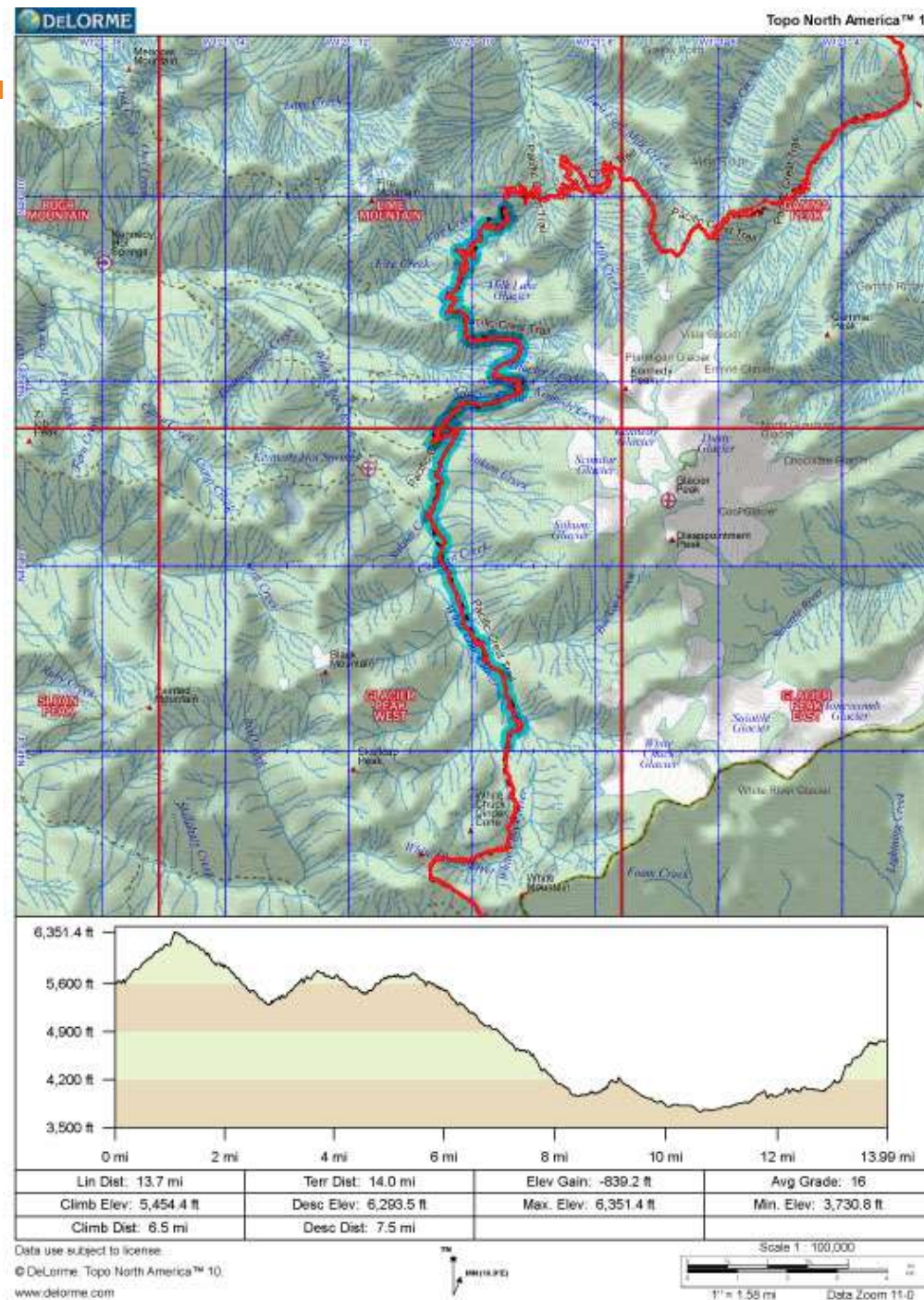




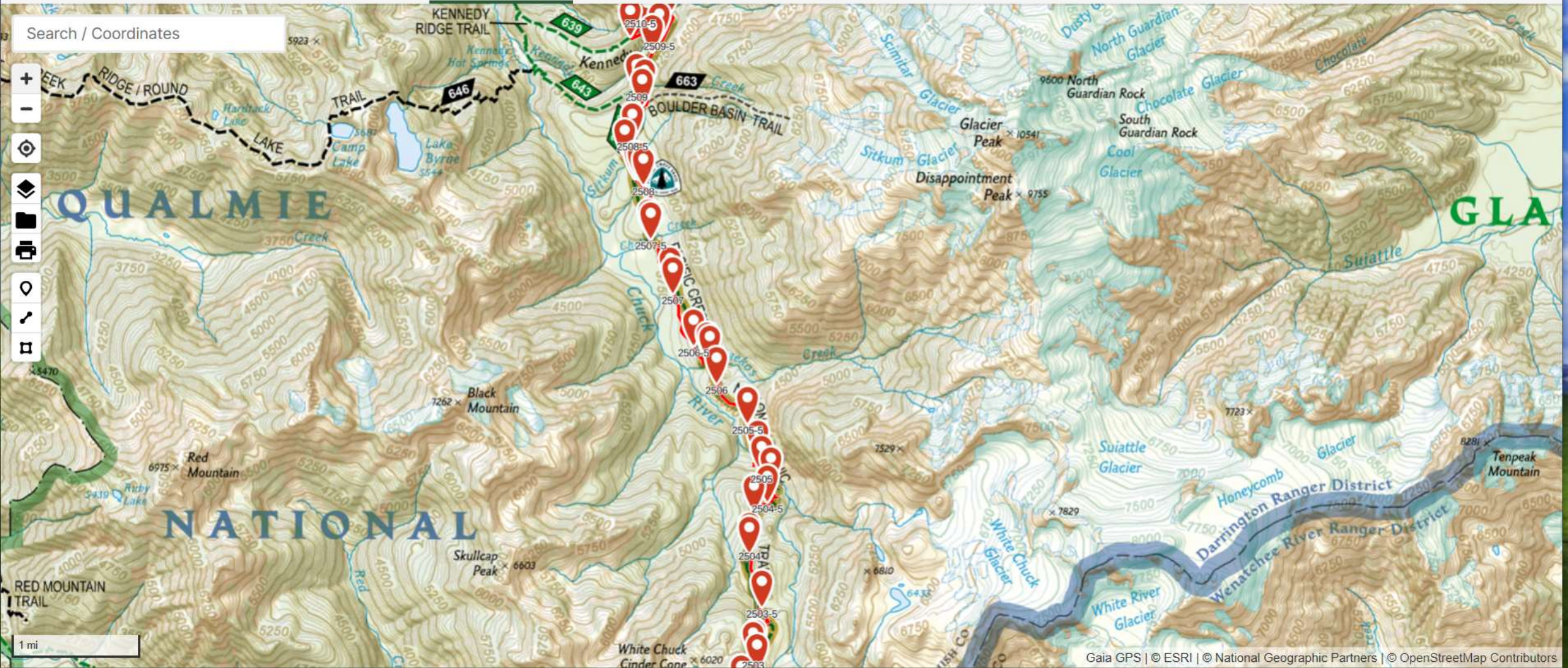


DAY 3 MICA LAKE TO TRAILSIDE CREEK

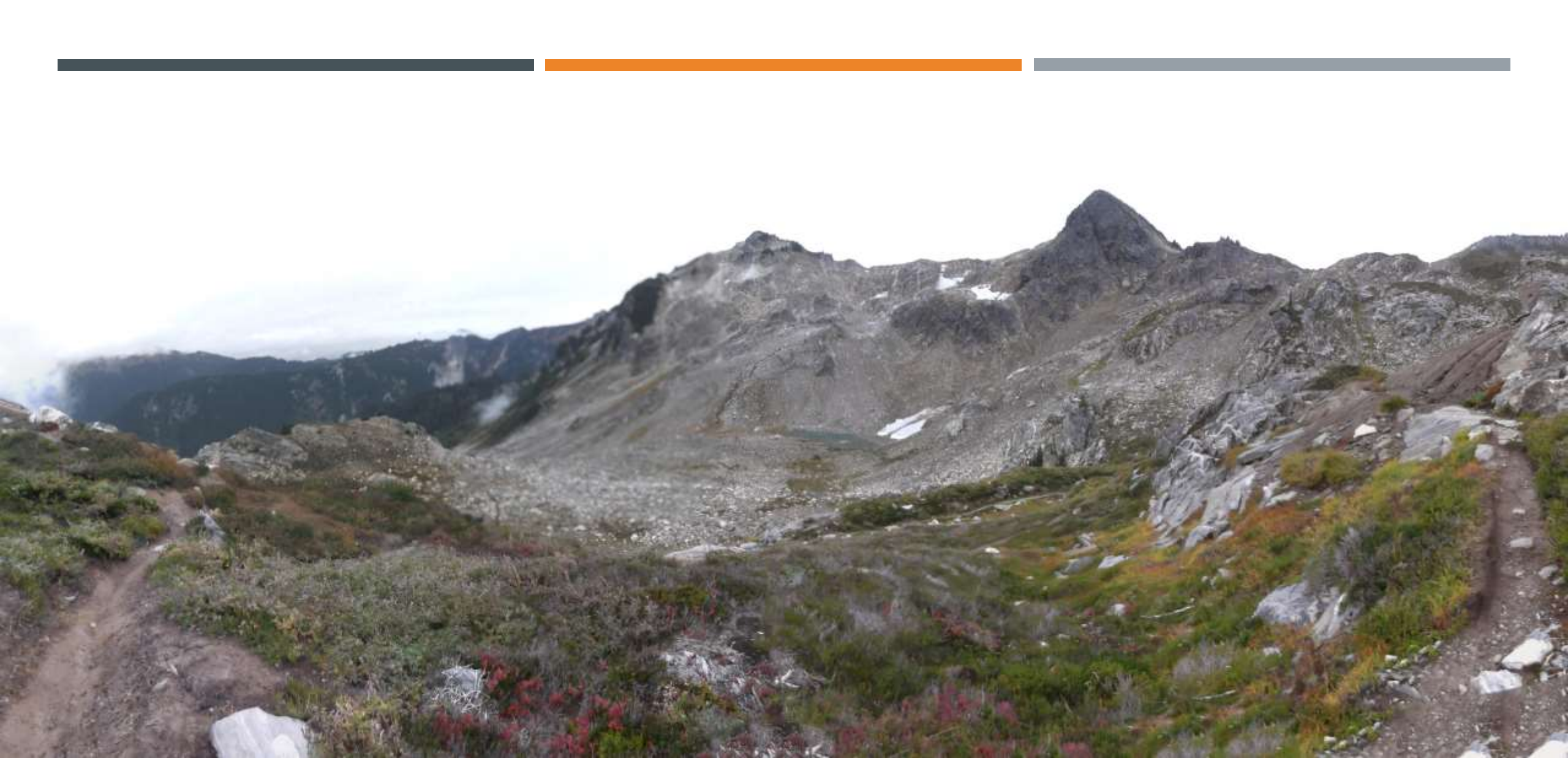
9/14/2015



Search / Coordinates























A weathered wooden sign is nailed to the trunk of a large tree in a forest. The sign is oriented horizontally and has two nails, one at the top and one at the bottom. The text on the sign is hand-painted in black, uppercase letters. The first line reads "← KENNEDY HOT SPRINGS" and the second line reads "← WHITE CHUCK ROAD". The background shows a dense forest of evergreen trees with green foliage.

← KENNEDY HOT SPRINGS
← WHITE CHUCK ROAD



PACIFIC CREST TRAIL



FIRE CREEK PASS

RED PASS









PACIFIC CREST TRAIL NO. 2000
• FIRE CREEK PASS
RED PASS

2000







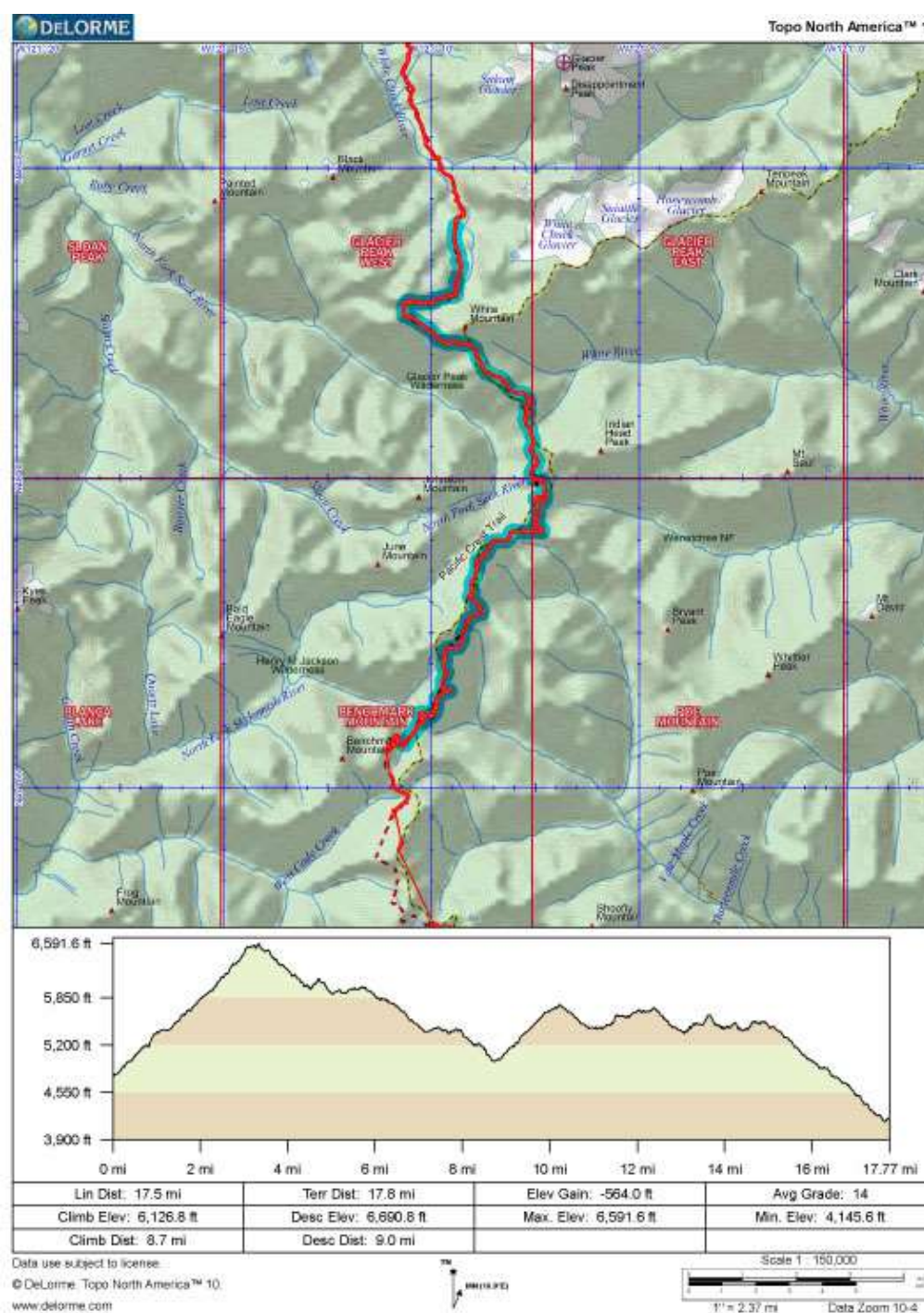






DAY 4 TRAILSIDE CREEK TO PASS CREEK

9/15/2015



Data use subject to license.

© DeLorme - Topo North America™ 10.
www.delorme.com



Search / Coordinates





















PCT - Suiattle to Stevens
9/12/2015 to 9/17/2015









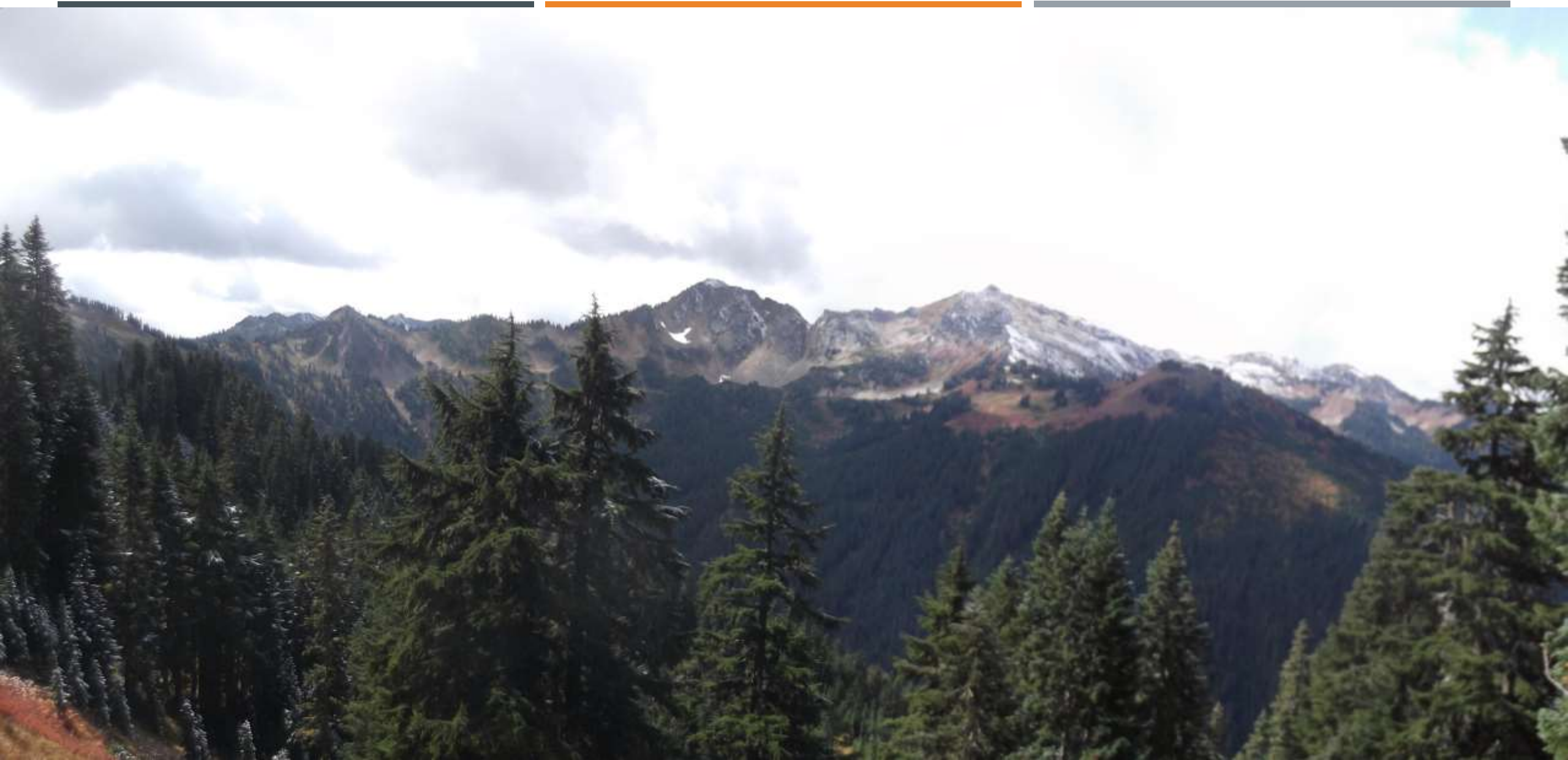




WHITE RIVER
TR. NO. 3507 →

↔ INDIAN PASS
WHITE PASS ↔

PACIFIC CREST TRAIL
NO. 2000 ↔













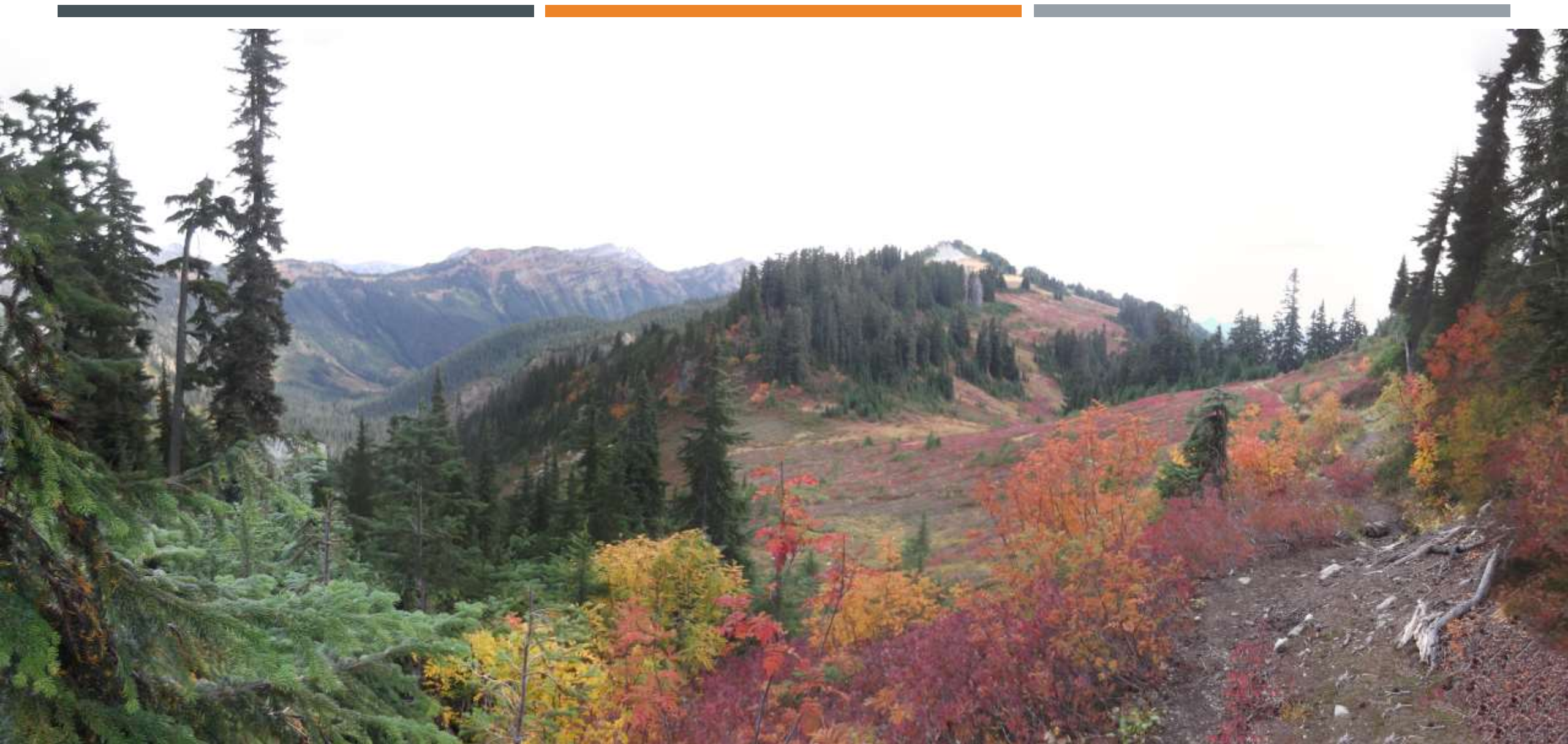




PACIFIC CREST TR.
NO. 2000

LITTLE WENATCHEE TR.
NO. 1525





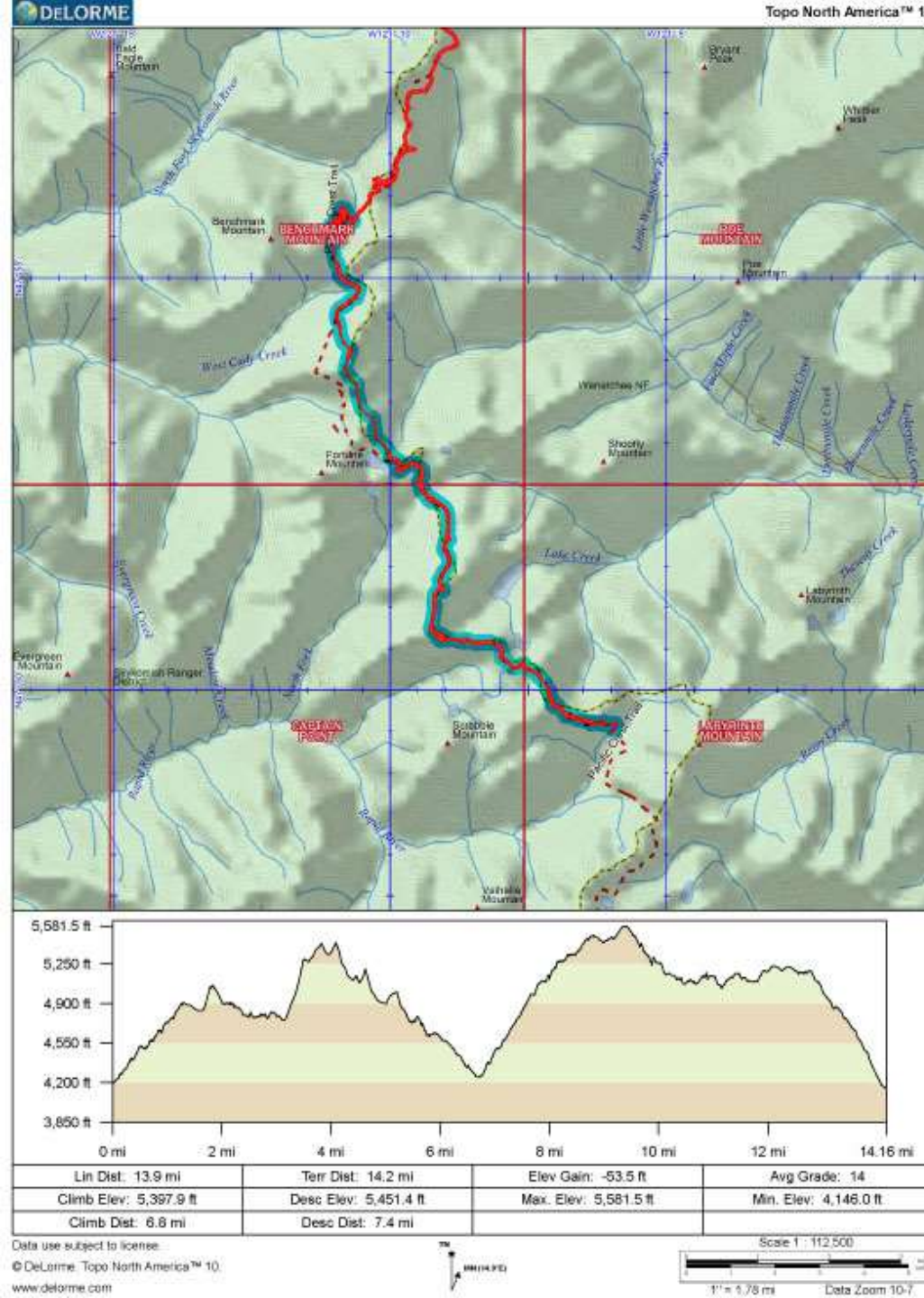






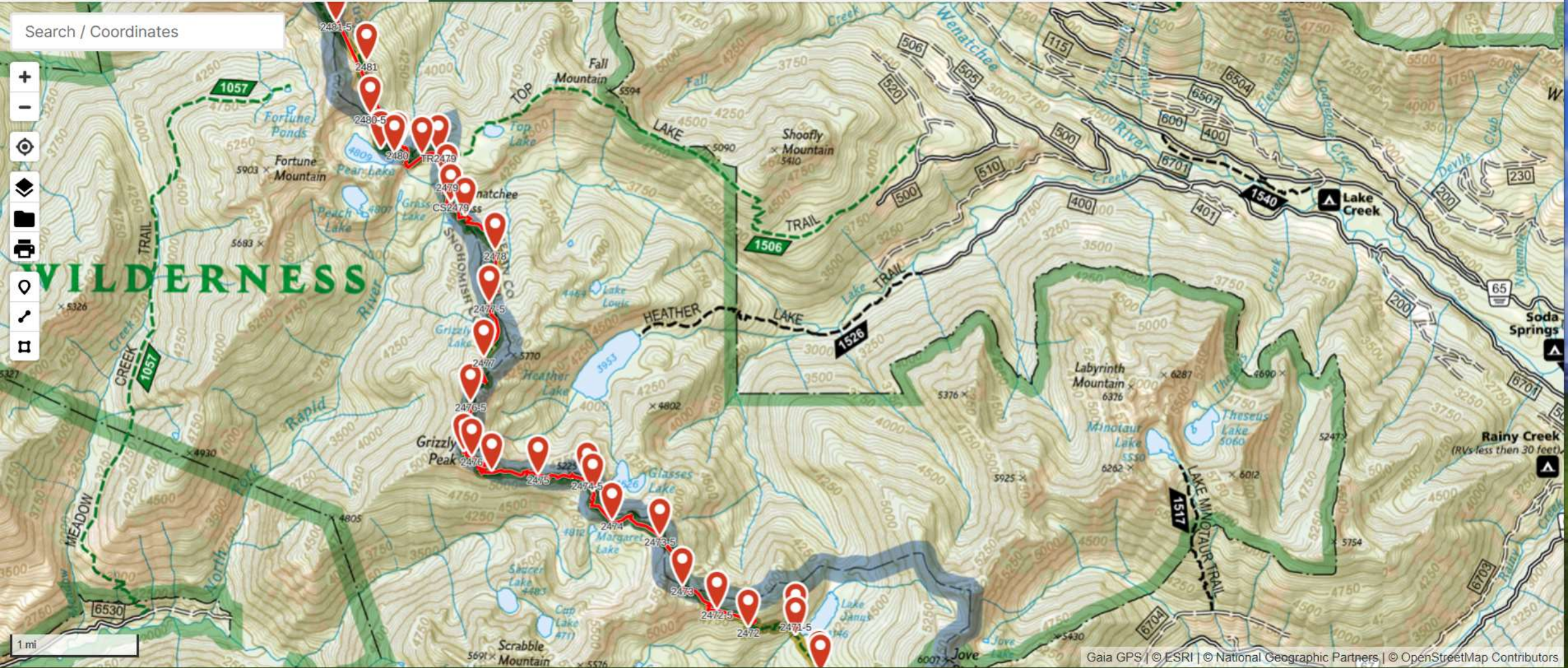
DAY 5 PASS CREEK TO LAKE JANUS

9/16/2015





Search / Coordinates



1 mi



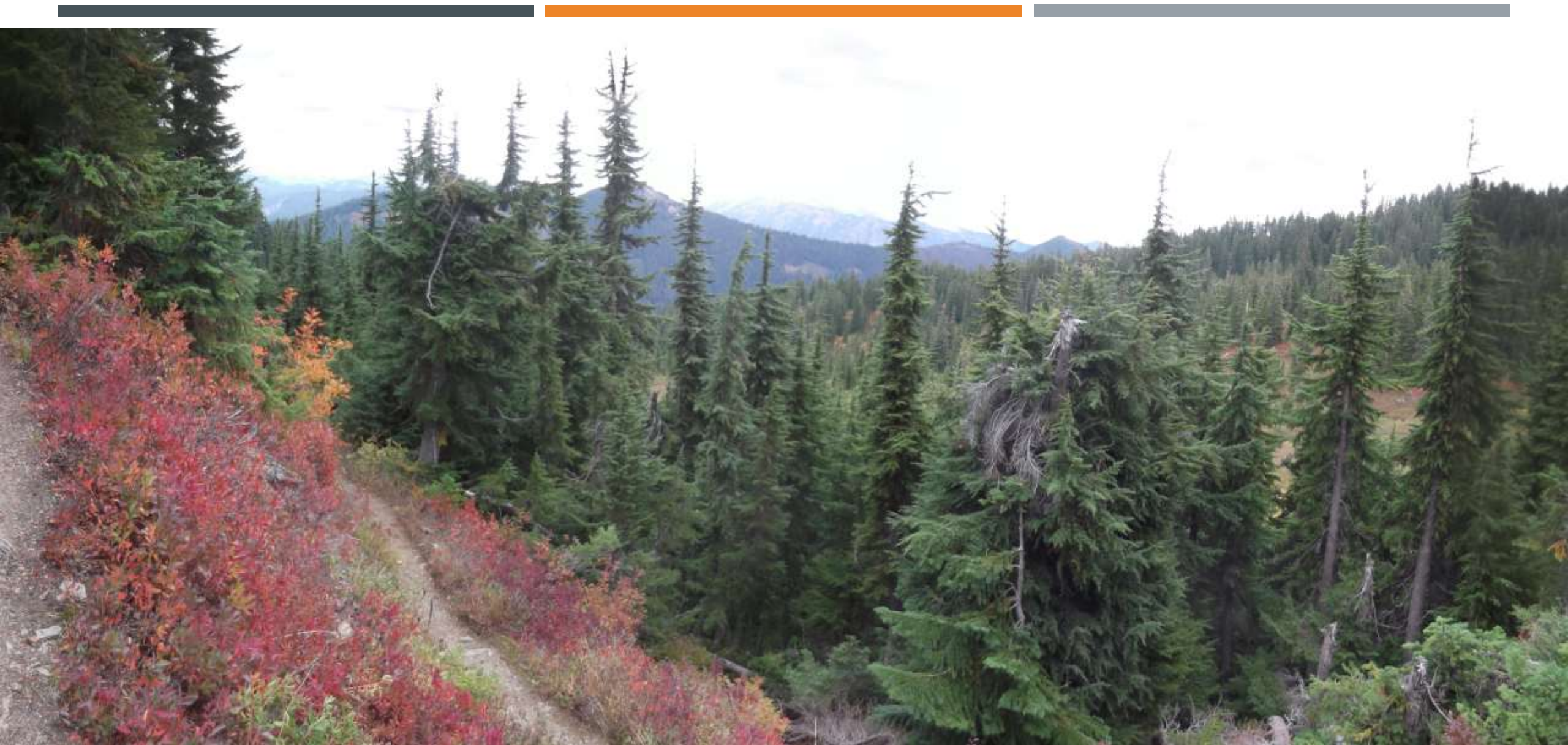










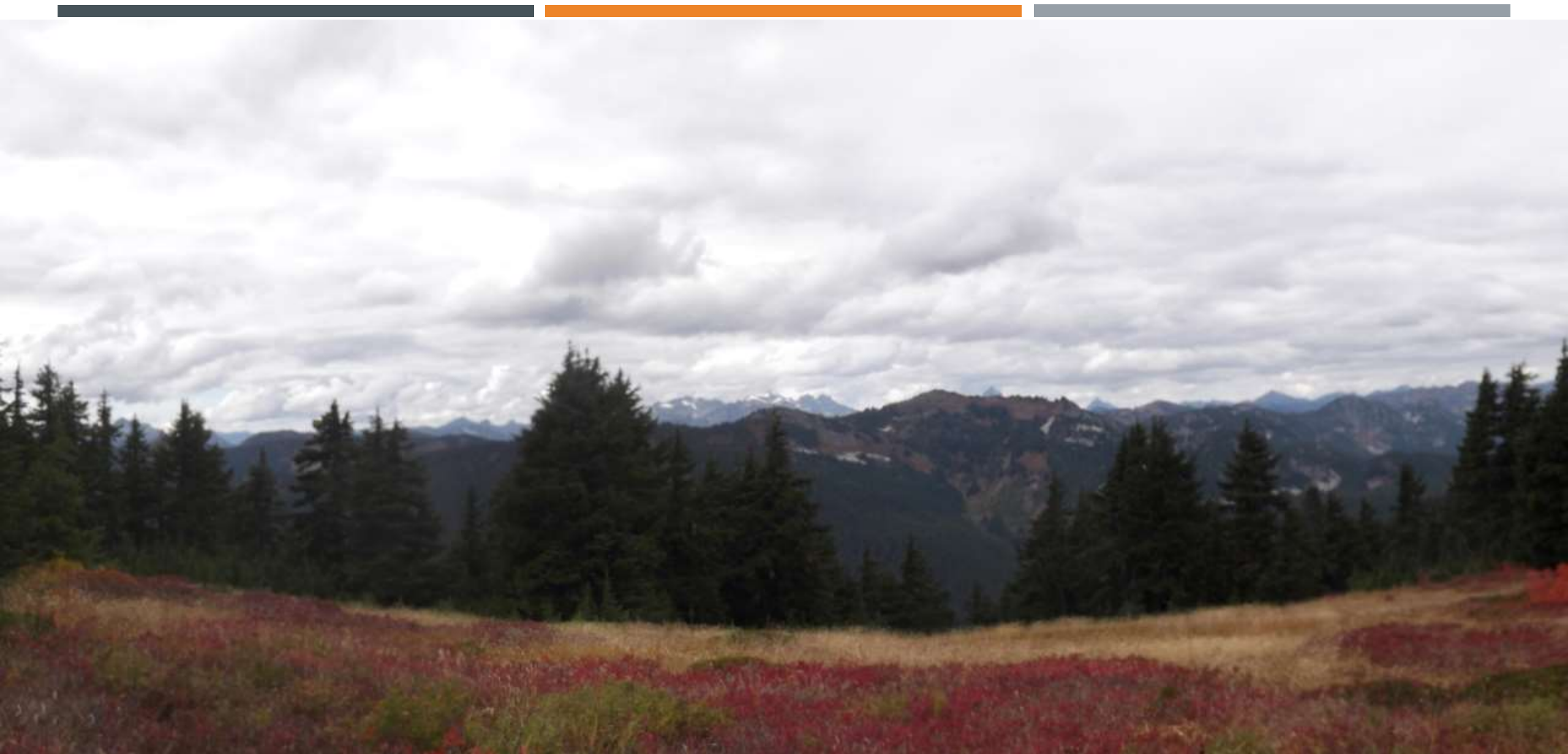
















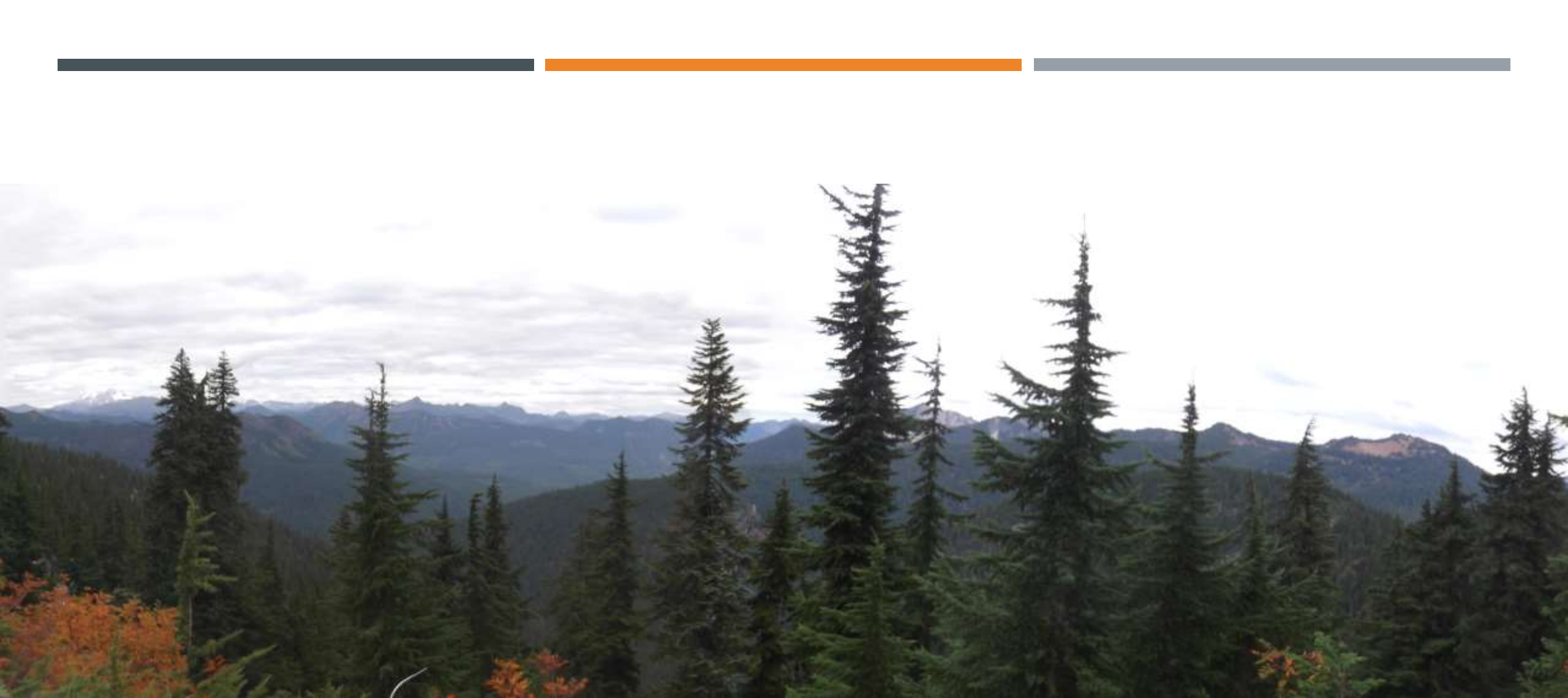








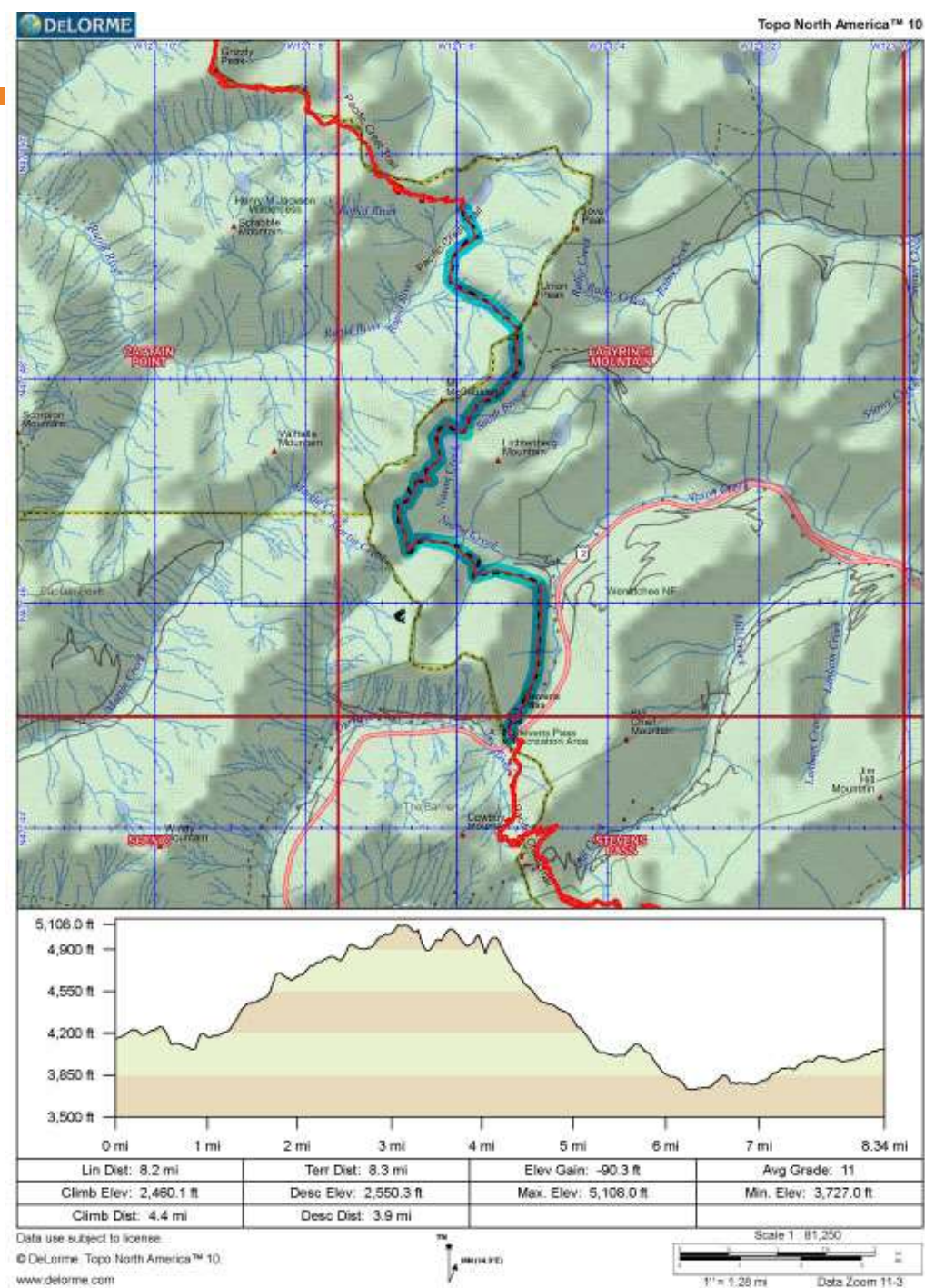




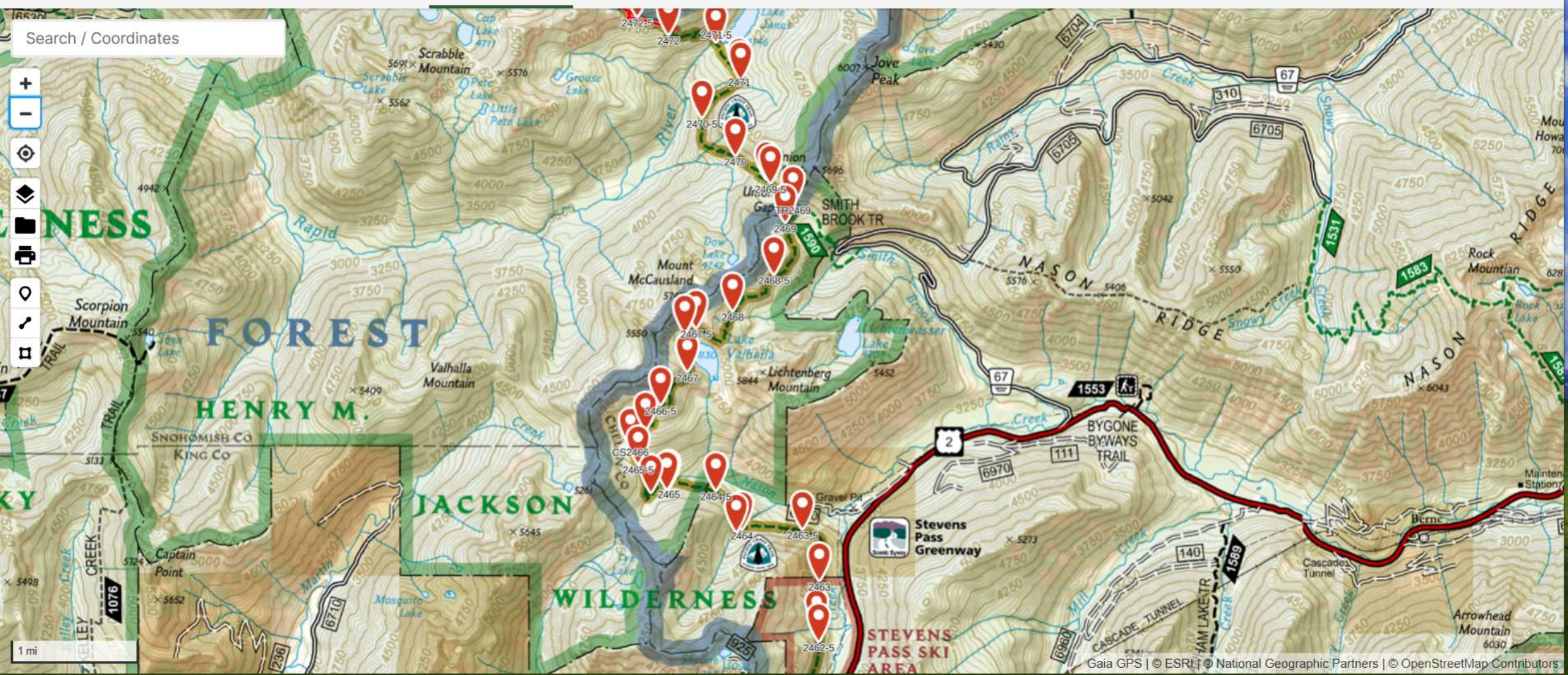


DAY 6 LAKE JANUS TO STEVENS PASS

9/17/2015



Search / Coordinates



















Mileage planner for PCT - Suiattle River Road to Stevens Pass

Prepared		9/11/2015					
Description	PCT Mileage per Half Mile	Elevation	Cumulative Miles	Mileage to next water	Campsite number - Option C	Day of the Week	Miles since last campsite - option C
Drive from Seattle to end of Suiattle River Road		1572					
Lots of water along Suiattle River Trail, per 9/2/2015 WTA report							
Campsite	2538	2333	11				
Water - Dolly Creek	2538	2333	11	5			
Vista Creek Camp - water	2533	3619	16	5	1 Saturday		16
Milk Creek camp - no water	2529	5724	20				
Vista Ridge top	2528	5800	21				
East Fork Milk Creek - Water	2528	5758	21	6			
Creek	2528	5785	21				
Campsite (dry camp; get water at 2528)	2526	5575	23				
Cross Milk Creek on bridge - water	2522	3355	27	2			
Large Creek - water	2520	4404	29	1			
Large stream, campsite nearby - water	2519	5161	30	1			
Mica Lake - campsites-water	2518	5455	31	3	2 Sunday		15
Fire Creek Pass	2517.5	6300	31.5				
Cross Fire Creek - water	2515	5279	34	3			
Campsites, shortly after cross Glacier Creek - water	2512	5294	37	3			
Several campsites, short distance after fording a large stream, near Sitkum Creek							
Stream, small wooden bridge - water	2508	3741	41	1			
Water	2507	3740	42	2			
Ford large stream	2505	4371	44	1			
Large creek, wooden bridge, campsites nearby - water	2504	4917	45	1			
Campsite and water	2503	5453	46	12	3 Monday		15
Red Pass	2502	6404	47				
Small seasonal stream	2500	6011	49				
White Pass	2499	5843	50				
Reflection Pond - campsite only sludgy water per 8/8/15 report	2498	5588	51				
Indian Pass, campsite (no water)	2496	4976	53				
Side trail to Kodak Peak	2495	5600	54				
Dishpan Gap	2493	5570	56				
Wards Pass, campsite (no water)	2492	5701	57				
Lake Sally Ann, campsite, toilet - water	2491	5476	58	4			
Cady Pass	2487	4165	62				
Pass Creek, campsite, toilet - water	2487	4836	62	7	4 Tuesday		16
Large campsite, seasonal stream	2484	4777	65				
Pear Lake campsite; water, next water Lake Janus	2480	4836	69	9			
Wenatchee Pass	2479	4245	70				



PROS AND CONS

■ PROS

- Relatively easy access
- Well maintained PCT trail
- Multiple campsite options
- Awesome scenery
- Opportunity to meet thru-hikers

■ CONS

- Rough road that is occasionally closed
- Trees across trail especially Suiattle Trail
- Campsites can be full
- Very remote



QUESTIONS