

Mt. Cruiser

Mt. Cruiser

6104 ft.

- South West Corner
- 18+ miles RT
- 5500 ft. elevation gain
- 1 pitch of 5.0 climbing on summit block
- Possible steep snow (conditions dependent)
- Exposed 3rd and some 4th class scrambling on approach





Mt. Olympus

Mt. Cruiser

Seattle



OLYMPIC NATIONAL

PARK

MOUNT OLYMPUS
West Peak 7580ft 2432m
Middle Peak
East Peak
Hoh Glacier
Hurra Glacier
Hubert Glacier
Jeffers Glacier

Mt Dana
6209ft 1895m

Mt Wilder
5528ft 1807m

Mt Queets
6480ft 1975m

Mt Seattle
6246ft 1924m

Mt Christie
6777ft 1835m

Muncaster Mtn
5910ft 1801m

Mt Claywood
5836ft 2084m

Sentinel Peak
6552ft 2009m

Mt Anderson
7330ft 2231m

Mt Deception
7788ft 2374m

Polton Peak
5301ft 1616m

Kimite Peak
5359ft 1646m

White Mtn
6400ft 1951m

Mt Lena
5955ft 1827m

Mt Bretherton
5900ft 1817m

Mt Skokomish
5434ft 1961m

Mt Crozier
6104ft 1860m

Mt Washington
6251ft 1907m

Mt Elinar

Capital Peak
5051ft 1540m

Lightning Peak
4654ft 1419m

COLONEL BOB WILDERNESS
Colonel Bob 4492ft 1369m

WONDER MOUNTAIN WILDERNESS

MOUNT SKOKOMISH WILDERNESS

OLYMPIC FOREST

Quinault Rain Forest

LAKE QUINAULT
(administered by Quinault Indian Nation)

Lake Quinault Lodge
Willaby

USFS/NPS Information Station

Staircase

Dosewallips

Lena Creek

Big Creek

North Shore Road:
Trailers and motor homes not recommended east of ranger station.

Road open summer only.

Camping vs. C2C

- Flapjack Lakes about 8 miles and 3000 ft. + from Staircase Ranger Station/trailhead
- Permit required to camp at Flapjack Lakes





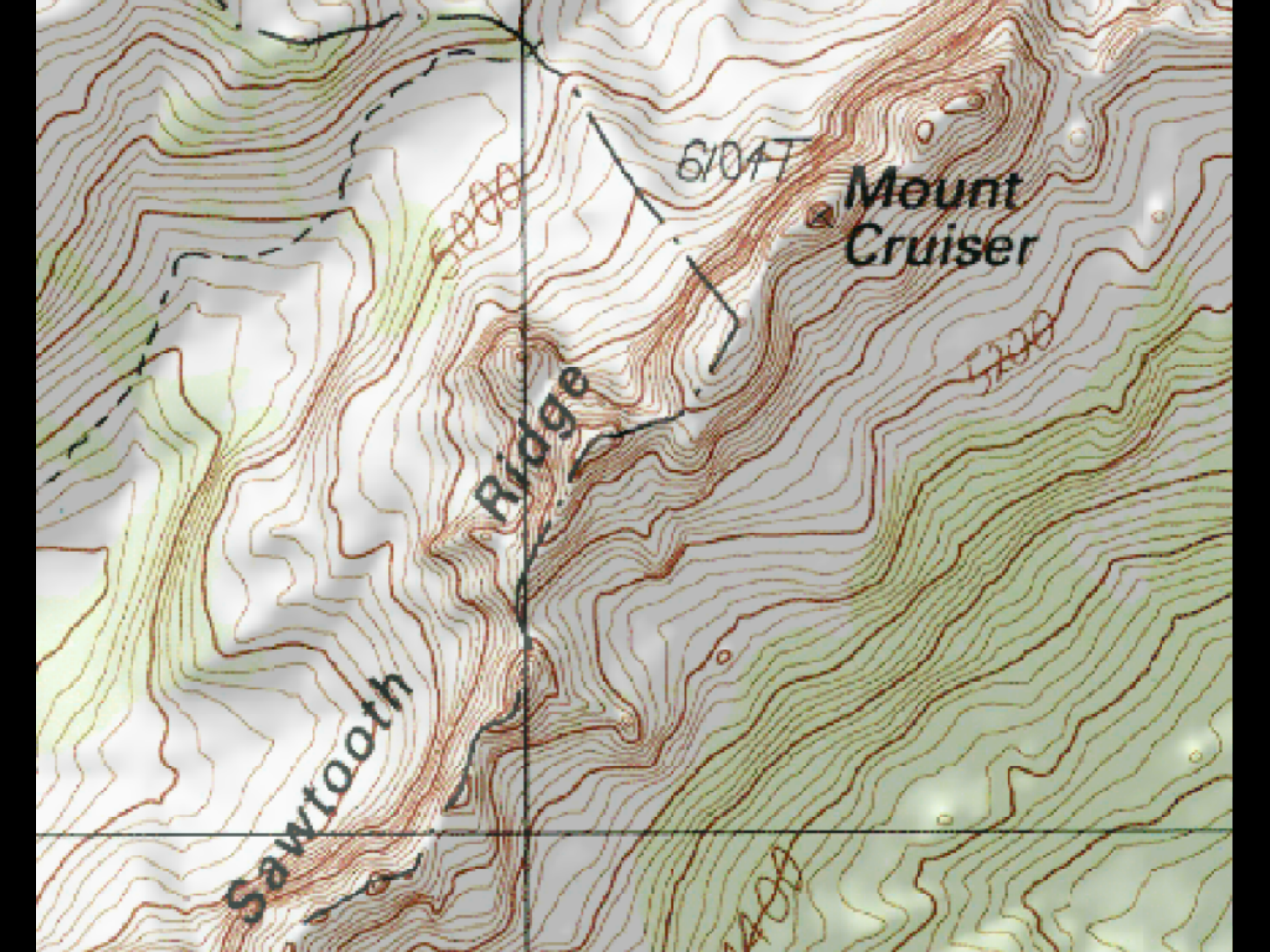
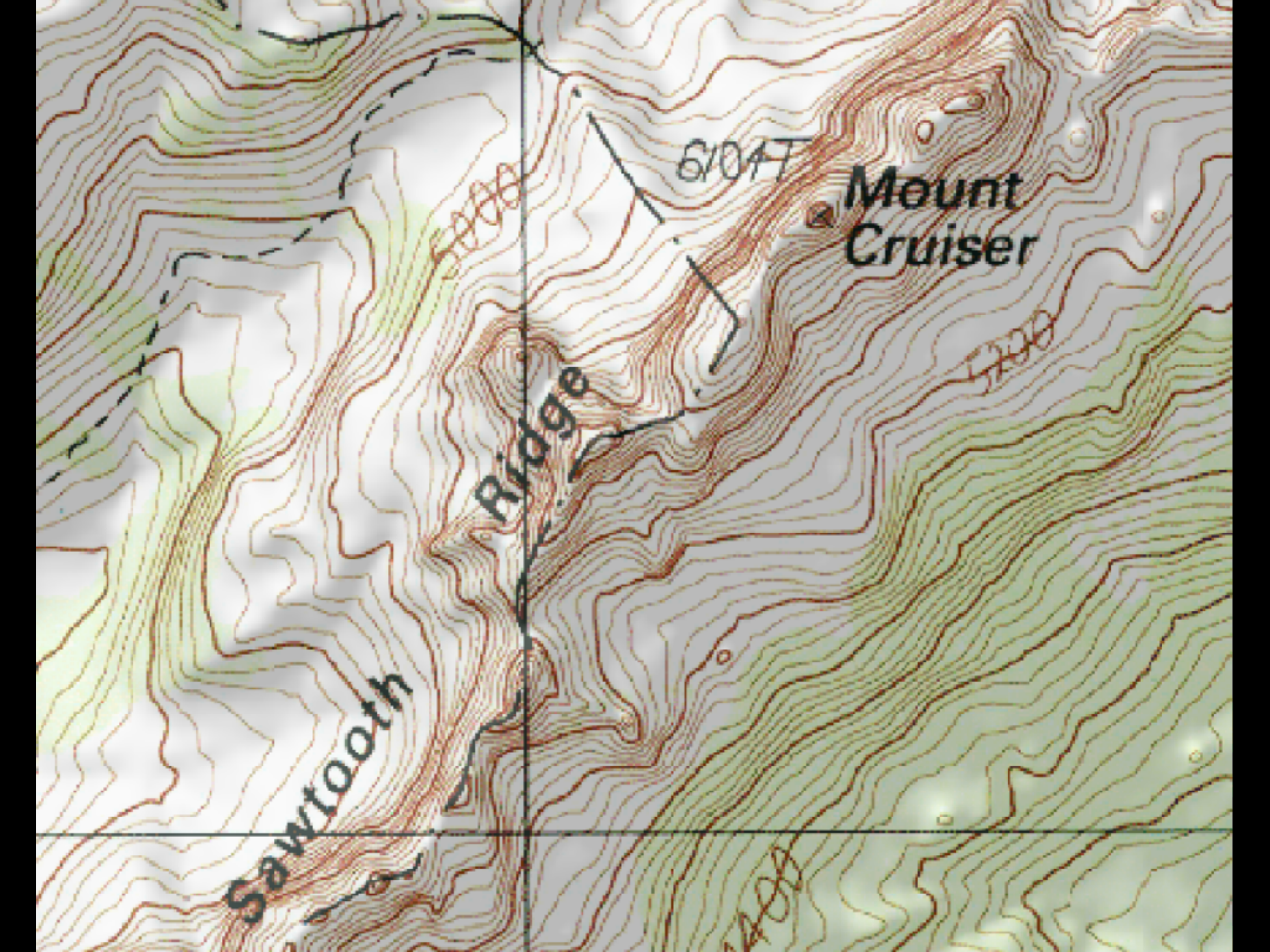






photo: Summit Post



61047

Mount
Cruiser

Ridge

Sawtooth







photo: Summit Post



Mount Cruiser

♀ = rappel stations,
30 meters apart

South Corner Route.
5.0 crux. Gear to 1.5"
Not much pro needed/possible.
Ice axe & crampons for
Needle Pass until late August.
Get separate beta on Beta
for approach. Previous
experience scrambling exposed
3rd class rock highly
recommended for approach.

Final bit: 30m, 3rd class
Easy but wildly exposed
scramble to summit.
A fixed line works well.

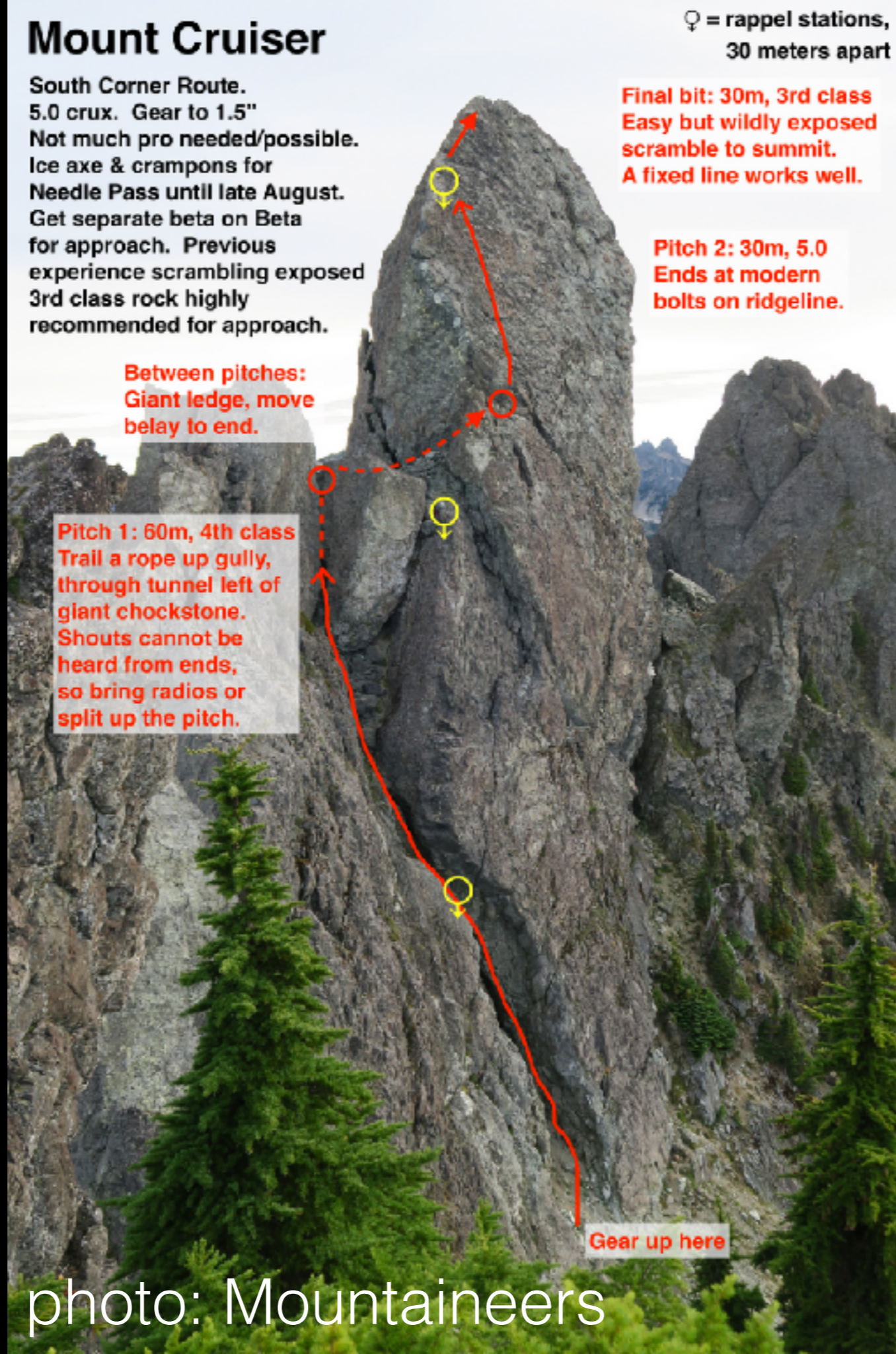
Pitch 2: 30m, 5.0
Ends at modern
bolts on ridgeline.

Between pitches:
Giant ledge, move
belay to end.

Pitch 1: 60m, 4th class
Trail a rope up gully,
through tunnel left of
giant chockstone.
Shouts cannot be
heard from ends,
so bring radios or
split up the pitch.

Gear up here

photo: Mountaineers











Mount Cruiser

♀ = rappel stations,
30 meters apart

South Corner Route.
5.0 crux. Gear to 1.5"
Not much pro needed/possible.
Ice axe & crampons for
Needle Pass until late August.
Get separate beta on Beta
for approach. Previous
experience scrambling exposed
3rd class rock highly
recommended for approach.

Final bit: 30m, 3rd class
Easy but wildly exposed
scramble to summit.
A fixed line works well.

Pitch 2: 30m, 5.0
Ends at modern
bolts on ridgeline.

Between pitches:
Giant ledge, move
belay to end.

Pitch 1: 60m, 4th class
Trail a rope up gully,
through tunnel left of
giant chockstone.
Shouts cannot be
heard from ends,
so bring radios or
split up the pitch.

Gear up here

