

Flowering parts in 3s (or multiples)
Leaves with parallel veins

Lily, Orchid, & Iris

Flowering parts in 4s

Leaves with veins in branching pattern

Evening Primrose
Mustard

Flowering parts in 5s (leaves with branching veins)

Flowers with **bilateral symmetry**

Mint
Figwort

Pea
Violet
Buttercup - some

Petals fused

Petals free

Flowers with radial symmetry

Buckwheat

Many **small flowers in tight bunches**

Parsley
Waterleaf

Valerian

Flowers not in tight bunches

Rose - some

Buttercup
Rose

Flowers with **central clusters** or seemingly so
(more than 10 stamens crowding the center)

Sunflower — technically
belongs with “Many small
flowers in tight bunches”

Pink
Purslane
Saxifrage

Normal flowers (10 or fewer stamens)
(or just use the “handless” to ld. these 7 Families)

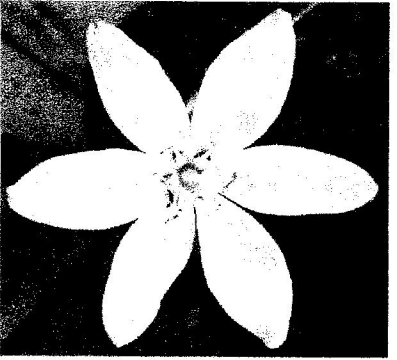
Heath
Phlox

Petals fused

Primrose

Petals free (or nearly so)

Borage



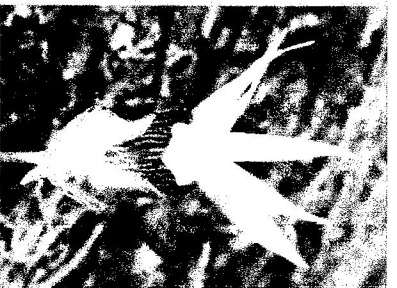
Lily Family

- Flowers: radial
- 6 tepals & 6 stamens



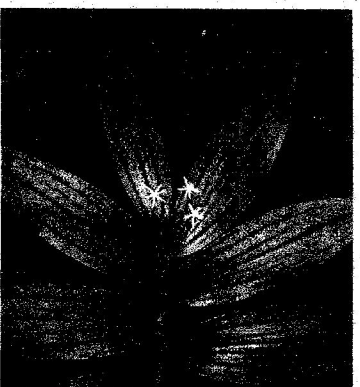
Iris Family

- Flowers: radial
- 6 tepals & 3 stamens
- Leaves: basal in flat plane



Orchid Family

- Flowers: bilateral
- Lower petal forming lip or bowl



Leaves

Parallel veins

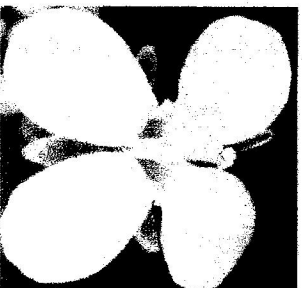
- Lily Family
- Iris Family
- Orchid Family



- Flowers: petals 4
- Ovary inferior & elongate
- Leaves: often opposite
- Long seed pods & 4 sections

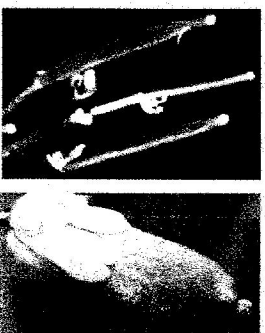


Evening-Primrose Family



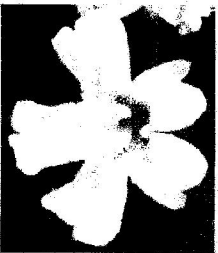
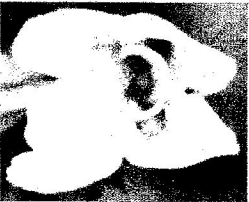
- Flowers: petals 4
- Ovary superior.
- 6 stamens – 4 long, 2 short usually
- Leaves: alternate
- Seed pods in many shapes. 2 sections

Mustard Family





Figwort Family



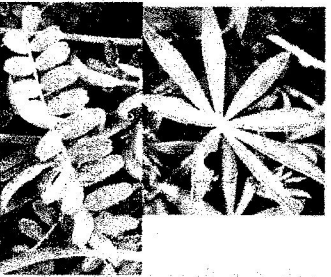
- Flowers: bilateral symmetry
- Petals fused
- Leaves: opposite or alternate



Mint Family

- Flowers: bilateral symmetry
- Petals fused
- Leaves: opposite
- Square stems
- Aromatic usually

Pea Family



- Flowers: bilateral symmetry
- Petals free or nearly so
- Upper petal the largest
- Leaves: compound

Violet Family

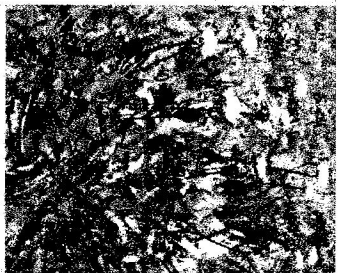


- Flowers: bilateral symmetry
- Petals free
- Lower petal the largest
- Leaves: simple



Buckwheat Family

- Flowers: small & in tight bunches
- 6 tepals form small flowers
- Leaves: basal or on stem
- Leaves entire & usually not toothed

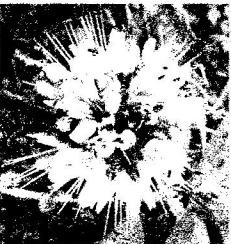


- Flowers: small - forming bottlebrush or oval clusters

Waterleaf Family

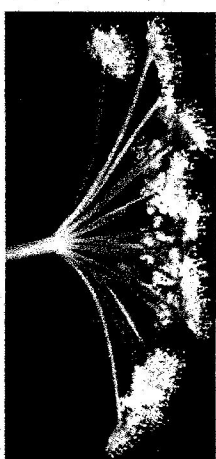
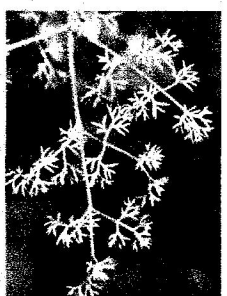
(In Borage Family now)

- Stamens long exerted
- Leaves: usually pinnately compound



Parsley Family

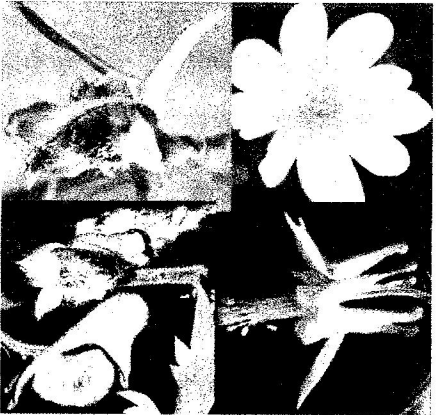
- Flowers: small & in true umbels
- Leaves: usually compound & often fern-like or carrot-like



- Flowers: small & in dense clusters
- Petals fused into narrow 5-lobed tube
- Small family

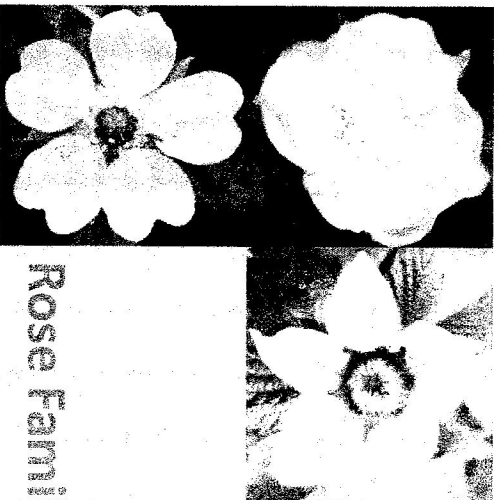
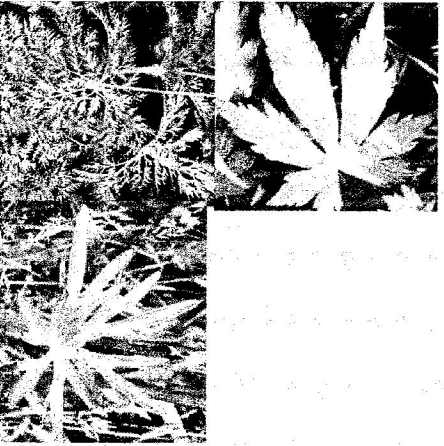
Valerian Family





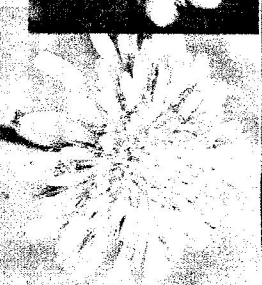
Buttercup Family

- Flowers: petals 5 to 12
- Flowers radial or bilateral
- Flowers simple to elaborate
- Leaves: compound or deeply divided



Rose Family

- Flowers: petals 5
- Flowers radial
- Leaves: often oval & serrated



Sunflower Family

- Flowers: appear many "petaled"
- Central cluster present or appears to be absent entirely.
- A compound flower: tiny flowers with 5 fused petals. All flowers packed into a single head.



Heath Family

- Flower: Petals fused into bells or urns



Phlox Family

- Flower: petals fused forming a tube with nearly perpendicular lobes
- Leaves: often narrow or like ladder

Primrose Family

- Flower: petals fused & sometimes reflexed
- Leaves: often basal



- Flower: petals fused
- Some flowers with central ring
- Fiddleheads often
- Plant often hairy

Borage Family

(Includes Waterleaf now)



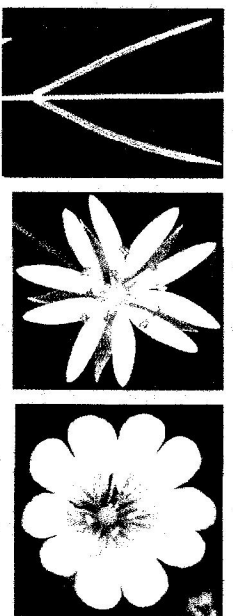


Purslane Family

- Flowers: petals free, pink strips often, 2 sepals
- Leaves: often succulent

Saxifrage Family

- Flower: petals free, stigmas 2 & often flaring apart
- Leaves: often basal



Pink Family

- Flowers: petals free, often notched or divided
- Leaves: opposite, often narrow & borne on enlarged nodes



Sedum Family

- Small very succulent plants with short fleshy leaves
- Flowers: petals free & yellow



Current Family

- Medium sized shrub to about 6'
- All have maple shaped leaves
- All have berries
- Flowers: petals fused

