

Navigation Northwest

A Quarterly Newsletter of the Seattle Navigation Committee

Volume 1, Number 1

October 2013

News

- Two additional Introduction to Map and Compass classes have been added to meet the growing demand, one in October and another in January, for a total of 8 year round. Greg Testa manages those classes. Fee
- USGS topographical maps, "Quads," are now printed on demand by a commercial shop in Beaverton, OR. The Mountaineers bookstore will continue to stock frequently requested maps at the legacy price, \$8.76 inc. tax (\$7.01 with member discount). REI no longer stocks USGS quads.
- A unique Smart Phone GPS navigation class is under development by the Navigation Committee. Look for this class in the new year.

Events

- Meet the Mountaineers night from 6 to 9 pm September 30 will include a Gear Grab where members sell their gently used gear and everyone buys new supplies [GearGrab](#)
- [Heybrook Ridge Stewardship](#). Join the Seattle Navigation Committee in clearing out the brush and weeds from the stump areas in advance of this year's navigation field trips on October 5th 2013 at 9AM at the Heybrook Ridge trailhead. For Basic Climbing students this activity qualifies as credit for your Stewardship graduation requirement.

Off Trail

- We mourn the loss of Hildegard Hendrickson, a founding member of the Puget Sound Mycological Society, who went missing while foraging June 8 and has not been found. The Navigation Chair has offered to provide a wilderness navigation training session to the members at their annual Meany Lodge outing. http://seattletimes.com/html/localnews/2021212282_mushroomfoloxml.html
- We continue to seek accounts of individuals or parties who have strayed off trail/route or have been benighted or lost for several days in the Northwest. We can each learn from the fortunes and misfortunes of wilderness navigators.

Photos and Videos

Courses

The Basic Navigation Course is offered at least Fall, Winter and Spring. The Fall session, both Workshop and Field Trip is listed below. The fee is \$55. Sign up as either STUDENT or INSTRUCTOR (see instructor details below). The Basic course does not include GPS-assisted navigation. A new A-GPS class for smart phones is under development.

9/1/13- 3/25/14	Basic Navigation Course - Seattle	Navigation	Peter Hendrickson	Main: 489 avail.	REGISTER
10/30/13	Basic Navigation Workshop - INSTRUCTORS	Navigation	Peter Hendrickson	Main: 34 avail.	REGISTER
10/30/13	Basic Navigation Workshop - STUDENTS	Navigation	Peter Hendrickson	Main: 92 avail.	REGISTER Prerequisites
11/7/13	Mentor Session for Basic Navigation Workshop	Navigation	Tim Lawson	Signup with Leader	INFO Prerequisites
11/9/13	Basic Navigation Field Trip - STUDENTS	Navigation	Peter Hendrickson	Main: 92 avail.	REGISTER Prerequisites
11/9/13	Basic Navigation Field Trip - INSTRUCTORS	Navigation	Peter Hendrickson	Main: 37 avail.	REGISTER

Classes and Seminars

10/15/13	Introduction To Map & Compass Getting Started	Navigation	Nina Crampton	Ldr: 3 avail. Main: 17 avail.	REGISTER
----------	---	------------	---------------	----------------------------------	--------------------------

Help Instruct

The Navigation Committee invites Basic Navigation Course graduates to volunteer as novice or experienced instructors. New instructors will be paired with an experienced instructor at both the Workshop and the Field Trip. Instructing at either event will renew your Navigation Card for a period of three years. New instructors are strongly encouraged to attend an evening training session.

10/10/13	Instructor Training	Navigation	Mike Sweeney	Ldr: 3 avail. Main: 17 avail.	REGISTER
----------	-------------------------------------	------------	--------------	----------------------------------	--------------------------

Navigation Projects

Our work advances with improvements to existing practice and additions to the suite of services. In every case, volunteers are the key. Email Committee Chair Peter Hendrickson if you are interested in any of the current projects below.

- Some key navigation documents are getting more difficult to edit in PDF form. Seeking a volunteer to rekey into Publisher so that content can be more easily managed year-to-year before converting to PDFs.
- Seeking producer for YouTube supplemental videos to accompany the Basic Navigation class.
- Seeking project lead for Map and Compass in-city practice course for navigators wishing to hone their skills.
- Seeking Navigation Northwest Newsletter section editors.

Featured Navigation Tool—Gmap4

Gmap4 - Online Topo Maps and A Lot More

By Joseph Elfelt

Navigators like maps, right? Gmap4 is a free, enhanced Google map viewer that can display high resolution topographic maps for the USA. How the map looks when it opens on your screen is determined by parameters that are part of the Gmap4 link. For example the following link shows the Stevens Pass area: <http://www.mappingsupport.com/p/gmap4.php?ll=47.744864,-121.091394&z=15&t=t4>

Since Gmap4 is a browser app, there is nothing to download, nothing to install. Gmap4 runs in most browsers on most devices from smartphones to desktops. Note that the browser does have to be online. When Gmap4 is running in the browser on a smartphone or other mobile device it automatically displays a touch-friendly interface.

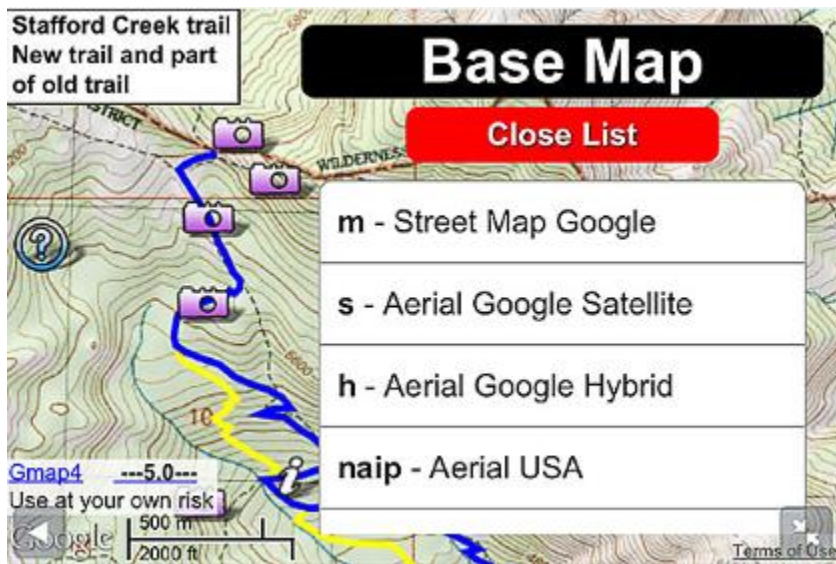


Figure 1. Gmap4 on an iPhone with 'map type' menu open

By using the Menu button you can access various features including current magnetic declination and a UTM grid. To obtain a link that will replicate the map you see on your screen, click (or touch) Menu ==> Link to this map. If you want to know the coordinates for a particular spot, just point to it and rightclick. You can do trip planning (Menu ==> Draw and Save) and save your work as a GPX file with both waypoints and route points or save your work right in a Gmap4 link - no data file needed.

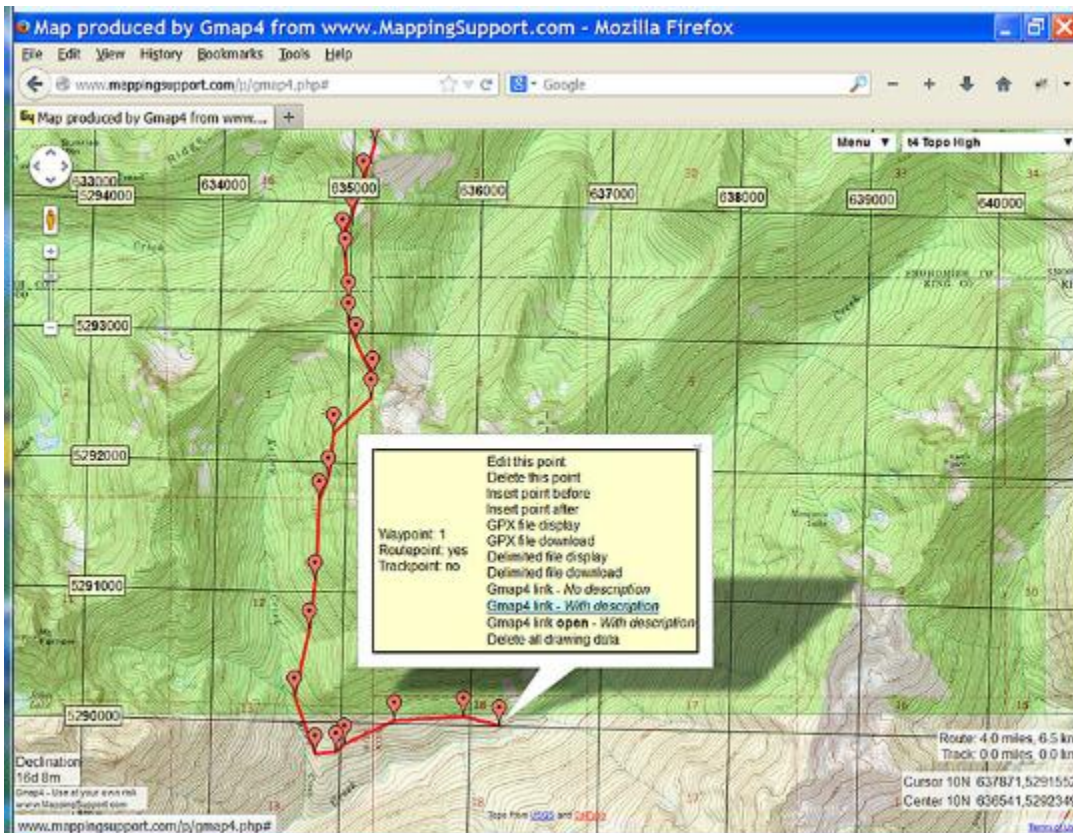


Figure2 - Gmap4 on a PC doing trip planning and with 'edit' window open

Gmap4 can display GPX, TPO, KML and KMZ files. It can also display Google MyPlaces files and a delimited text file format I designed. These files can be hosted almost anywhere online.

The text file format lets you do cool things with labels. For example, a text file is used to turn on labels for all the recreation symbols on the following map. The data for this map covers the Mt. Baker - Snoqualmie National Forest. Also, this is the first online map that shows trail mileages without making you click the trails one at a time.

http://www.mappingsupport.com/p/gmap4.php?q=http://www.mappingsupport.com/p/recreation/usfs/r6/gmap4_mt_baker_snoqualmie.txt&ll=47.411246,-121.517758&z=14&t=t4&label=on

To learn more, check out the homepage. The documentation is written in plain-speak, not computer-speak! The Gmap4 homepage has a FAQ, examples, quick start info (in the Help file) and more to quickly get you up to speed.

Homepage: <http://www.mappingsupport.com/p/gmap4.html>

About me: In 2009 I launched Gmap4 because I like maps, I enjoy helping people and I had the technical wherewithal. As a software developer, it has been greatly rewarding to add features that are both first-of-their-kind and also truly useful. And as a hiker, no matter what technology I am willing to lug up the trail, I always have a paper 1:24,000 topo, mechanical altimeter and compass. During the years that I was a member of the Mountaineers I enjoyed many scramble trips and also led ski tours.

Links of Interest

- The online Directions Magazine <http://www.directionsmag.com/> provides a window into everything geospatial. While content tilts towards GIS specialists and industry, some articles cross into Wilderness Navigation territory, e.g. Gmap4:

REST and WMS Map Viewer for Google Maps and GIS Data

<http://apb.directionsmag.com/entry/gmap4-rest-and-wms-map-viewer-for-google-maps-and-gis-data/344034>.

- Volunteers are sought for The National Map Corps to crowd source edit USGS structures data by updating existing features, adding new features, and removing obsolete features throughout the country. More information about The National Map and US Topo is at <https://my.usgs.gov/confluence/display/nationalmapcorps/Home> .
- Kindred navigation spirits are to be found in the Geo Caching community. Find them at <https://www.geocaching.com/> .
- Have you tried the free Google powered Map Pedometer for your city walks <http://www.mappedometer.com/> ? Elevation graphs are now included.

Navigation Gear

- Approved and recommended compasses for the Basic Navigation Course are noted below.
- A revised overview of GPS navigation techniques and tools will soon be posted to the Navigation website.

Inquiries, contributions, Letters to the Editor to Peter Hendrickson
p.hendrickson43@gmail.com

OK to Forward

Email Navigation Northwest to any friends/outdoors partners to distribute

(Rev. 26Oct2013/ph)